

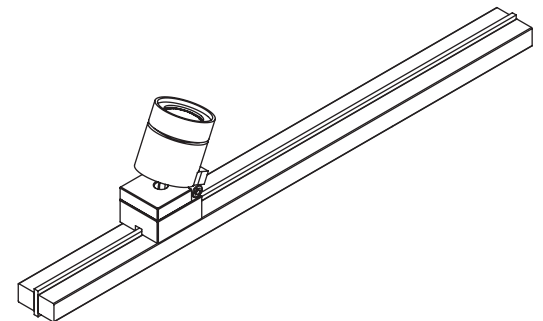
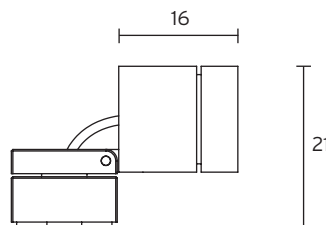
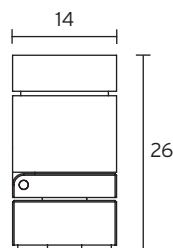
technical data sheet // LED spotlight C1-micro-LC

description:	LED spotlight for installation on magnetic track
housing colour:	aluminium anodised black, silver, brass (other surface finishing on request)
LED type:	high power LED, high CRI
lifetime:	50000 hours
basis of lifetime:	L70B10
compliant to EMC:	DIN EN 55015:2013
light colour (+/- 100K):	~2700 K, ~3000 K, ~4000 K, ~5700 K
max. luminous flux:	~50 lm
max. power consumption:	~1W
LED driver:	internal
power input:	9-12 V DC constant voltage
dimming:	external
protection class:	IP 20



- recommended accessory: - power supply of the series PWM by MeanWell with constant voltage 9-12 V DC, class 2
- magnetic track (11 x 7 mm), holders
- additional accessory: - lenses: 15°, 18°, 26°, 30°, 45°, 80° and 47°+25°, 40°+10°
- honeycomb grid, anti-glare tube, inclined tube, light diffusion foil, barn door

Dimension



specification in mm

Test result

for light colour ~3.000K // standard lens 30° // colour rendering index typ. 97, R9 > 90, R12 > 90 // colour variation ≤ 3 SDCM

