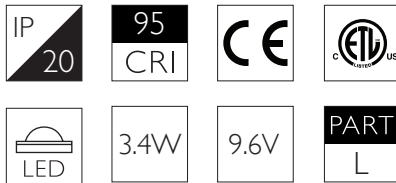


NARROW



## TECHNICAL DESCRIPTION

Stacko Multi-Aim 3 Mid is a 3.4W miniature display orientated LED lighting module that is a part of the modular Stacko Collection which allows users to 'stack' lighting modules together to create unique lighting set-ups that comes as standard in white, black and brushed aluminium finishes. It is a 'Mid' Stacko lighting module which means it cannot close a circuit and accepts another Stacko lighting module above it. Each 102lm light engines produce a Narrow beam with a peak intensity of 794 cd. It has a total of 3 light engines. Stacko Multi-Aim 3 Mid is fully adjustable with infinite 360 degree pan and has 90 degree adjustable tilt coverage per light engine. It has four site changeable optics for flexible distribution and can accept snoot accessories. The luminaire is compatible with our Minipoint system that enables a plug and play setup where luminaires can be simply swapped to suit changing lighting requirements. Please note that there can only be maximum 10 light engines per Stacko circuit or driver.

## MECHANICAL & ELECTRICAL

**CATEGORY** Interior use only IP20  
**MATERIAL** AL 6063-T6  
**WEIGHT** 101g  
**PAN** 360°  
**TILT** Adjustable ±45°(90°coverage)  
**ACCESSORIES** End cap, Snoots

**SYSTEMS** Minipoint  
**DRIVER TYPE** Constant Current  
**FORWARD VOLTAGE** 9.6V  
**CURRENT** 350mA  
**DIMMING COMPATIBILITY** DALI | 0-10V  
**CIRCUIT** Open  
**NO. OF LIGHT ENGINES** 3

## FINISHES

**FINISHES** Brushed Aluminium | Black | White | Rubbed Bronze\* | Polished Brass\* | Satin Brass\* | Polished Nickel\* | Custom RAL\*\*

\* All Premium or Custom finishes are built and finished to order. These are subject to an extended lead time and MOQ

## OPTICAL

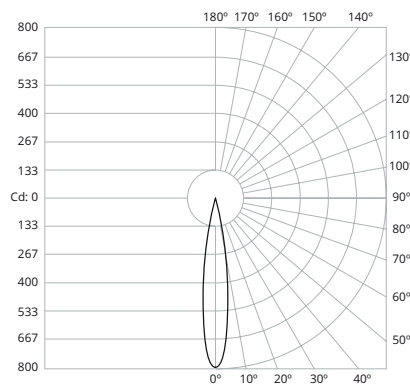
**PER LIGHT ENGINE OUTPUT**  
**MODULE OUTPUT** 102lm\*\*  
**ABSOLUTE OUTPUT** 94lm

**BEAM ANGLE** 16°  
**SYSTEM POWER** 3.4W  
**COLOUR TEMPERATURE** 2700K | 3000K\*  
**CRI** 95CRI  
**TM-30** Rf 93 | Rg 99  
**LOR** 92%

**TOTAL COMBINED OUTPUT**  
**MODULE OUTPUT** 306lm\*\*  
**ABSOLUTE OUTPUT** 282lm

\*\* Photometry shown is correct for 3000K module. Please enquire for 2700K module output.

## PHOTOMETRY PER LIGHT ENGINE



Distance (m)	Beam Diameter (m)	Beam Angle (°)	Illuminance (lx)
0.25	0.07	16°	12,701
0.50	0.14	16°	3,175
1.00	0.28	16°	794
2.00	0.56	16°	198
3.00	0.84	16°	88

Brushed Aluminium	White 9010	Matte Anodised Black	Rubbed Bronze *	Polished Brass *	Brushed Brass *	Polished Nickel *
I013-M-AL-XX9516	I013-M-WH-XX9516	I013-M-EBA-XX9516	I013-M-RB-XX9516	I013-M-PB-XX9516	I013-M-SB-XX9516	I013-M-PN-XX9516

For 3000K Substitute XX with 30

-

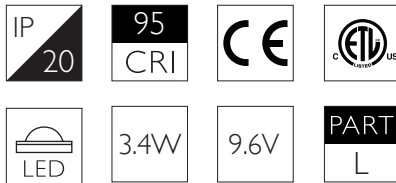
For 2700K Substitute XX with 27

All variants of Stacko require a Minipoint for mounting.

Please enquire for Custom RAL finishes.

\*Premium finishes subject to MOQ & extended lead times.

MEDIUM



## TECHNICAL DESCRIPTION

Stacko Multi-Aim 3 Mid is a 3.4W miniature display orientated LED lighting module that is a part of the modular Stacko Collection which allows users to 'stack' lighting modules together to create unique lighting set-ups that comes as standard in white, black and brushed aluminium finishes. It is a 'Mid' Stacko lighting module which means it cannot close a circuit and accepts another Stacko lighting module above it. Each 102lm light engines produce a Medium beam with a peak intensity of 359 cd. It has a total of 3 light engines. Stacko Multi-Aim 3 Mid is fully adjustable with infinite 360 degree pan and has 90 degree adjustable tilt coverage per light engine. It has four site changeable optics for flexible distribution and can accept snoot accessories. The luminaire is compatible with our Minipoint system that enables a plug and play setup where luminaires can be simply swapped to suit changing lighting requirements. Please note that there can only be maximum 10 light engines per Stacko circuit or driver.

## MECHANICAL & ELECTRICAL

**CATEGORY** Interior use only IP20  
**MATERIAL** AL 6063-T6  
**WEIGHT** 101g  
**PAN** 360°  
**TILT** Adjustable ±45°(90°coverage)  
**ACCESSORIES** End cap, Snoots

**SYSTEMS** Minipoint  
**DRIVER TYPE** Constant Current  
**FORWARD VOLTAGE** 9.6V  
**CURRENT** 350mA  
**DIMMING COMPATIBILITY** DALI | 0-10V  
**CIRCUIT** Open  
**NO. OF LIGHT ENGINES** 3

## FINISHES

**FINISHES** Brushed Aluminium | Black | White | Rubbed Bronze\* | Polished Brass\* | Satin Brass\* | Polished Nickel\* | Custom RAL\*\*

\* All Premium or Custom finishes are built and finished to order. These are subject to an extended lead time and MOQ

## OPTICAL

### PER LIGHT ENGINE OUTPUT

**MODULE OUTPUT** 102lm\*\*  
**ABSOLUTE OUTPUT** 94lm

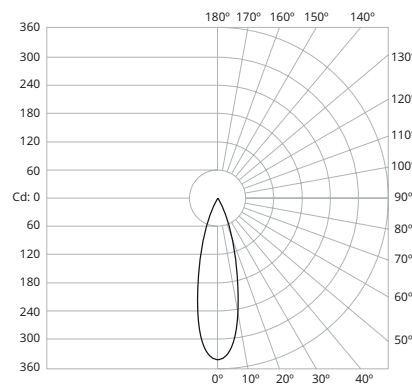
**BEAM ANGLE** 23°  
**SYSTEM POWER** 3.4W  
**COLOUR TEMPERATURE** 2700K | 3000K\*  
**CRI** 95CRI  
**TM-30** Rf 93 | Rg 99  
**LOR** 92%

### TOTAL COMBINED OUTPUT

**MODULE OUTPUT** 306lm\*\*  
**ABSOLUTE OUTPUT** 282lm

\*\* Photometry shown is correct for 3000K module. Please enquire for 2700K module output.

## PHOTOMETRY PER LIGHT ENGINE



Distance (m)	Beam Diameter (m)	Beam Area (m²)	Light Intensity (lx)
0.25	0.10	0.00785	5,745 lx
0.50	0.20	0.0314	1,436 lx
1.00	0.41	0.1327	359 lx
2.00	0.81	0.5298	90 lx
3.00	1.22	1.1623	40 lx

Finish	Part Number	Finish	Part Number	Finish	Part Number	Finish	Part Number
Brushed Aluminium	I013-M-AL-XX9523	White 9010	I013-M-WH-XX9523	Matte Anodised Black	I013-M-EBA-XX9523	Rubbed Bronze *	I013-M-RB-XX9523
						Polished Brass *	I013-M-PB-XX9523
						Brushed Brass *	I013-M-SB-XX9523
						Polished Nickel *	I013-M-PN-XX9523

For 3000K Substitute XX with 30

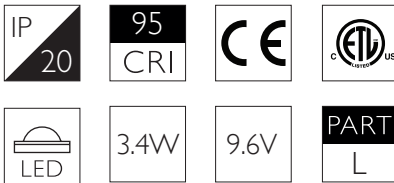
For 2700K Substitute XX with 27

All variants of Stacko require a Minipoint for mounting.

Please enquire for Custom RAL finishes.

\*Premium finishes subject to MOQ & extended lead times.

FLOOD



## TECHNICAL DESCRIPTION

Stacko Multi-Aim 3 Mid is a 3.4W miniature display orientated LED lighting module that is a part of the modular Stacko Collection which allows users to 'stack' lighting modules together to create unique lighting set-ups that comes as standard in white, black and brushed aluminium finishes. It is a 'Mid' Stacko lighting module which means it cannot close a circuit and accepts another Stacko lighting module above it. Each 102lm light engines produce a Flood beam with a peak intensity of 109 cd. It has a total of 3 light engines. Stacko Multi-Aim 3 Mid is fully adjustable with infinite 360 degree pan and has 90 degree adjustable tilt coverage per light engine. It has four site changeable optics for flexible distribution and can accept snoot accessories. The luminaire is compatible with our Minipoint system that enables a plug and play setup where luminaires can be simply swapped to suit changing lighting requirements. Please note that there can only be maximum 10 light engines per Stacko circuit or driver.

## MECHANICAL & ELECTRICAL

**CATEGORY** Interior use only IP20  
**MATERIAL** AL 6063-T6  
**WEIGHT** 101g  
**PAN** 360°  
**TILT** Adjustable ±45°(90°coverage)  
**ACCESSORIES** End cap, Snoots

**SYSTEMS** Minipoint  
**DRIVER TYPE** Constant Current  
**FORWARD VOLTAGE** 9.6V  
**CURRENT** 350mA  
**DIMMING COMPATIBILITY** DALI | 0-10V  
**CIRCUIT** Open  
**NO. OF LIGHT ENGINES** 3

## FINISHES

**FINISHES** Brushed Aluminium | Black | White | Rubbed Bronze\* | Polished Brass\* | Satin Brass\* | Polished Nickel\* | Custom RAL\*\*

\* All Premium or Custom finishes are built and finished to order. These are subject to an extended lead time and MOQ

## OPTICAL

### PER LIGHT ENGINE OUTPUT

**MODULE OUTPUT** 102lm\*\*  
**ABSOLUTE OUTPUT** 94lm

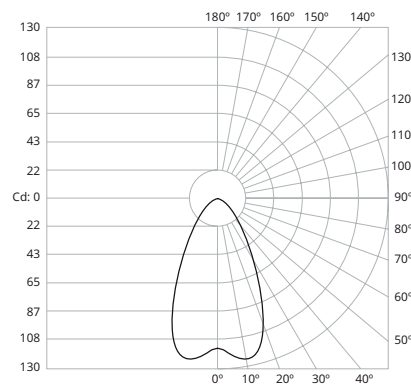
**BEAM ANGLE** 45°  
**SYSTEM POWER** 3.4W  
**COLOUR TEMPERATURE** 2700K | 3000K\*  
**CRI** 95CRI  
**TM-30** Rf 93 | Rg 99  
**LOR** 92%

### TOTAL COMBINED OUTPUT

**MODULE OUTPUT** 306lm\*\*  
**ABSOLUTE OUTPUT** 282lm

\*\* Photometry shown is correct for 3000K module. Please enquire for 2700K module output.

## PHOTOMETRY PER LIGHT ENGINE



Distance (m)	Beam Diameter (m)	Illuminance (lx)
0.25	0.21	1,744 lx
0.50	0.41	436 lx
1.00	0.83	109 lx
2.00	1.66	27 lx
3.00	2.49	12 lx

Brushed Aluminium	White 9010	Matte Anodised Black	Rubbed Bronze *	Polished Brass *	Brushed Brass *	Polished Nickel *
I013-M-AL-XX9545	I013-M-WH-XX9545	I013-M-EBA-XX9545	I013-M-RB-XX9545	I013-M-PB-XX9545	I013-M-SB-XX9545	I013-M-PN-XX9545

For 3000K Substitute XX with 30

-

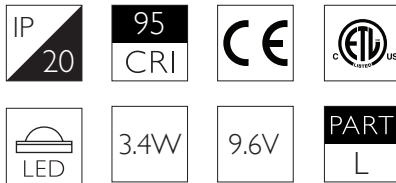
For 2700K Substitute XX with 27

All variants of Stacko require a Minipoint for mounting.

Please enquire for Custom RAL finishes.

\*Premium finishes subject to MOQ & extended lead times.

WIDE FLOOD



## TECHNICAL DESCRIPTION

Stacko Multi-Aim 3 Mid is a 3.4W miniature display orientated LED lighting module that is a part of the modular Stacko Collection which allows users to 'stack' lighting modules together to create unique lighting set-ups that comes as standard in white, black and brushed aluminium finishes. It is a 'Mid' Stacko lighting module which means it cannot close a circuit and accepts another Stacko lighting module above it. Each 102lm light engines produce a Wide flood beam with a peak intensity of 26 cd. It has a total of 3 light engines. Stacko Multi-Aim 3 Mid is fully adjustable with infinite 360 degree pan and has 90 degree adjustable tilt coverage per light engine. It has four site changeable optics for flexible distribution and can accept snoot accessories. The luminaire is compatible with our Minipoint system that enables a plug and play setup where luminaires can be simply swapped to suit changing lighting requirements. Please note that there can only be maximum 10 light engines per Stacko circuit or driver.

## MECHANICAL & ELECTRICAL

**CATEGORY** Interior use only IP20  
**MATERIAL** AL 6063-T6  
**WEIGHT** 101g  
**PAN** 360°  
**TILT** Adjustable ±45°(90°coverage)  
**ACCESSORIES** End cap, Snoots

**SYSTEMS** Minipoint  
**DRIVER TYPE** Constant Current  
**FORWARD VOLTAGE** 9.6V  
**CURRENT** 350mA  
**DIMMING COMPATIBILITY** DALI | 0-10V  
**CIRCUIT** Open  
**NO. OF LIGHT ENGINES** 3

## FINISHES

**FINISHES** Brushed Aluminium | Black | White | Rubbed Bronze\* | Polished Brass\* | Satin Brass\* | Polished Nickel\* | Custom RAL\*\*

\* All Premium or Custom finishes are built and finished to order. These are subject to an extended lead time and MOQ

## OPTICAL

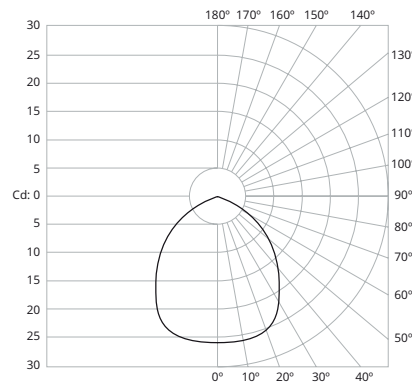
**PER LIGHT ENGINE OUTPUT**  
**MODULE OUTPUT** 102lm\*\*  
**ABSOLUTE OUTPUT** 94lm

**BEAM ANGLE** 90°  
**SYSTEM POWER** 3.4W  
**COLOUR TEMPERATURE** 2700K | 3000K\*  
**CRI** 95CRI  
**TM-30** Rf 93 | Rg 99  
**LOR** 92%

**TOTAL COMBINED OUTPUT**  
**MODULE OUTPUT** 306lm\*\*  
**ABSOLUTE OUTPUT** 282lm

\*\* Photometry shown is correct for 3000K module. Please enquire for 2700K module output.

## PHOTOMETRY PER LIGHT ENGINE



1.0W 90°		3000K LED	
0.25m	0.50m	416 lx	
0.50m	1.00m	104 lx	
1.00m	2.00m	26 lx	
2.00m	4.00m	7 lx	
3.00m	6.00m	3 lx	

Brushed Aluminium	White 9010	Matte Anodised Black	Rubbed Bronze *	Polished Brass *	Brushed Brass *	Polished Nickel *
I013-M-AL-XX9590	I013-M-WH-XX9590	I013-M-EBA-XX9590	I013-M-RB-XX9590	I013-M-PB-XX9590	I013-M-SB-XX9590	I013-M-PN-XX9590

For 3000K Substitute XX with 30

-

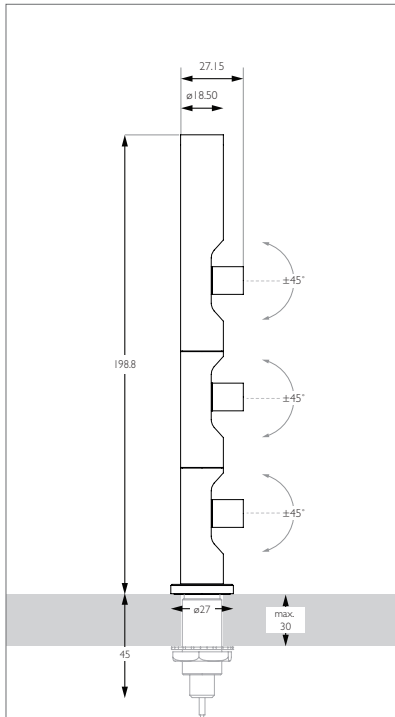
For 2700K Substitute XX with 27

All variants of Stacko require a Minipoint for mounting.

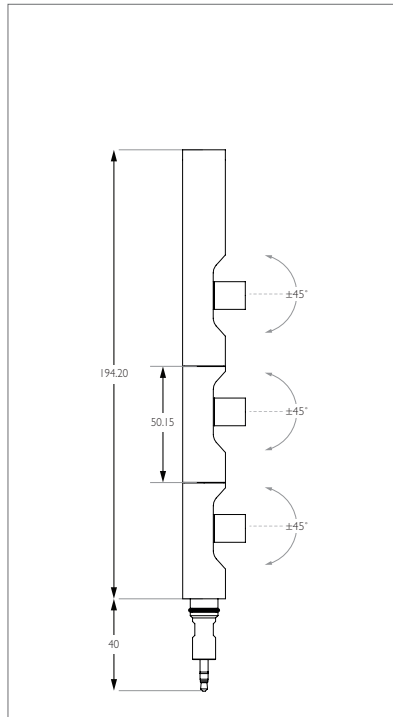
Please enquire for Custom RAL finishes.

\*Premium finishes subject to MOQ & extended lead times.

## DIMENSIONS



INSIDE MINIPOINT



LIGHTING MODULE ONLY

## SYSTEM INFO

**HORIZONTAL STACK** Do not exceed 3 luminaire modules / 1000mm / 10 light engines (whichever comes first) without installing a form of support.

**VERTICAL STACK** Do not exceed 5 luminaire modules / 1000mm / 10 light engines (whichever comes first) without installing a form of support.