

Linear low profile luminaire with side exit cable management

## LIGHT OUTPUT

CCT/LED Colour (K)	RGB
CRI	N/A
Luminaire Lumens	N/A
Optical Data/Beam Angle (°)	Diffused
LED Binning	RGB

## ELECTRICAL

Watts per metre (W/m)	24
Input Voltage	24 VDC (23V min, 25V max)
Connection Type	JST JWPS IP67
Maximum Chain Length (mm)	5000
Approx. Power Consumption (W)	4
Dimmable	Yes
Max Luminaire Length (mm)	1005

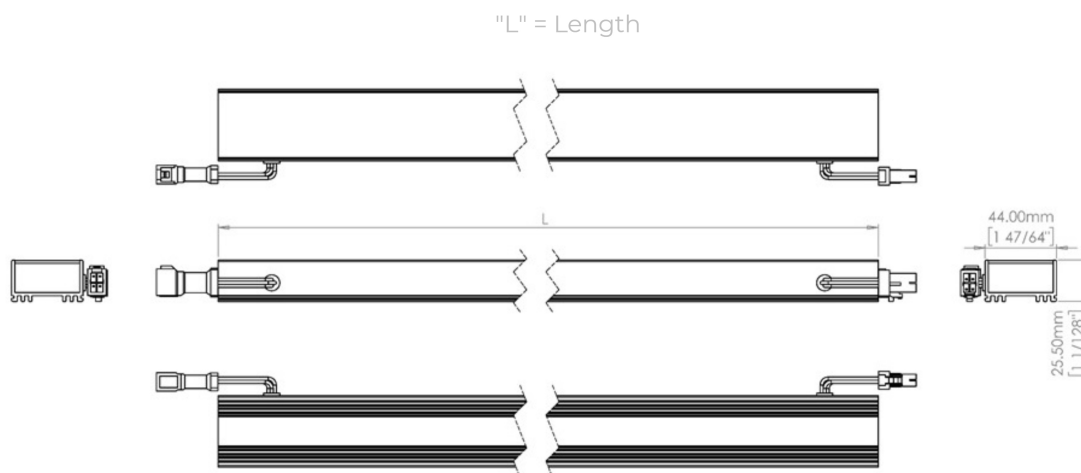
## PHYSICAL & ENVIRONMENTAL

Finish	Silver Anodised Housing
Length (mm)	105
Ambient Storage Temperature (°C)	-30 to +85
Ambient Operating Temperature (°C)	-10 to +50
IP Rating	IP67
IK Rating	N/A
LED Pitch (mm)	8.33
Cable Exit/Entry	Side Exit
Weight (g)	N/A

## PRODUCT FEATURES

- End to end LED smooth lit capabilities.
- Diffused potting technology provides a smooth homogeneous lit effect
- IP67 rated with cable management side exiting the LED luminaire.
- Dimmable via remote LED driver
- 44 x 25.5 mm / 1.73" x 1.00" cross-section

## DIMENSIONS

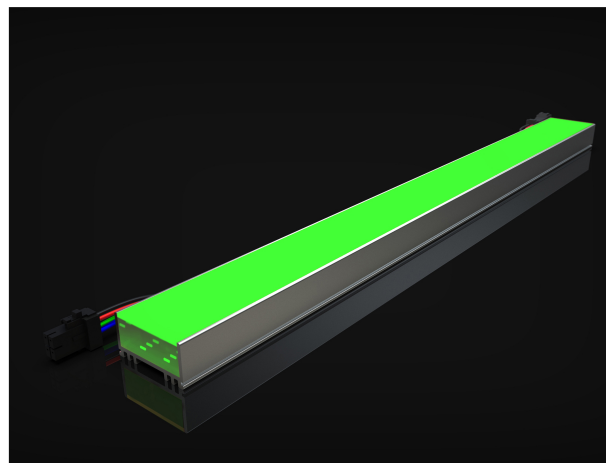


PART NUMBER: VEX-LUMAERA-44-RGB - RGB - 105 - 24W - IP67 - DIF

Provided data are typical values. Due to tolerances of the production process, figures for light output, electrical data etc can vary up to 10%. The Tc-point must be measured in thermal equilibrium in accordance with IEC EN 60598-1.

Copyright © Vexica. All rights reserved. For informational purposes only.

Not a warranty or specification. Data subject to change without prior notice.



## SPECIFICATION TEXT

A robust aluminium based LED luminaire. Manufactured in the UK using advanced and resistant polyurethane resin components for durability and wet location use. This unique product is designed to connect end to end to provide gap free illumination across the building facade, features or direct view applications. This product offers superb light output from a homogeneous light emitting surface.