

H shaped LED profile, high power LED luminaire with upto 50w per m of output

LIGHT OUTPUT

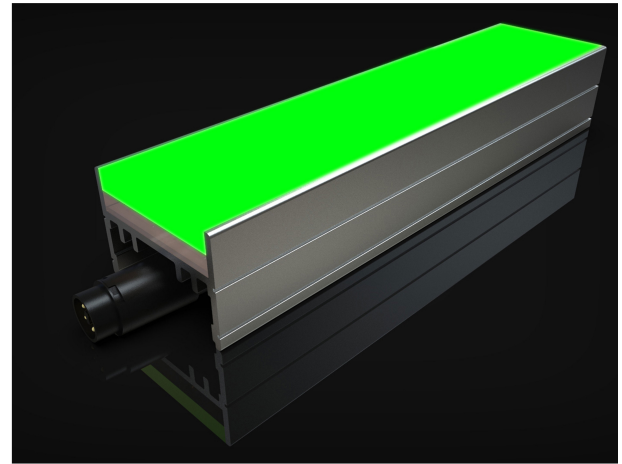
| | |
|-----------------------------|-------------|
| CCT/LED Colour (K) | RGB + 4000K |
| CRI | N/A |
| Luminaire Lumens | N/A |
| Optical Data/Beam Angle (°) | Diffused |
| LED Binning | RGB + 3SDCM |

ELECTRICAL

| | |
|-------------------------------|---------------------------|
| Watts per metre (W/m) | 50 |
| Input Voltage | 24 VDC (23V min, 25V max) |
| Connection Type | TBC |
| Maximum Chain Length (mm) | 3000 |
| Approx. Power Consumption (W) | 15 |
| Dimmable | Yes |
| Max Luminaire Length (mm) | 1005 |

PHYSICAL & ENVIRONMENTAL

| | |
|------------------------------------|-------------------------|
| Finish | Silver Anodised Housing |
| Length (mm) | 305 |
| Ambient Storage Temperature (°C) | -30 to +85 |
| Ambient Operating Temperature (°C) | -10 to +50 |
| IP Rating | IP67 |
| IK Rating | N/A |
| LED Pitch (mm) | 8.33 |
| Cable Exit/Entry | Bottom-Exit |
| Weight (g) | N/A |



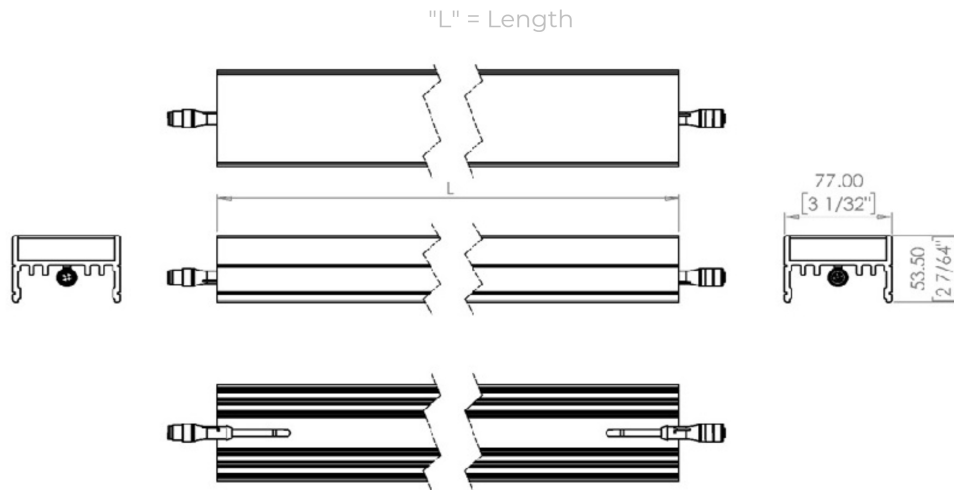
SPECIFICATION TEXT

A robust aluminium based LED luminaire incorporating two rows of LEDs. Manufactured in the UK using advanced and resistant polyurethane resin components for durability and wet location use providing an IP67 rating as standard. This unique product is designed to connect end to end to graze a building facade, features or wall lighting detail. This product offers superb light output from an homogeneous light emitting surface.

PRODUCT FEATURES

- End to end LED lighting capabilities
- Adjustable brackets or clips available
- IP 67 rated with cable management
- Rear exit cables
- Proprietary potting technology
- 77 x 53.5mm / 3.03" x 2.10" cross-section

DIMENSIONS



PART NUMBER: VEX-LUMAERA-77-H - RGB - 305 - 50W - IP67 - DIF

Provided data are typical values. Due to tolerances of the production process, figures for light output, electrical data etc can vary up to 10%. The Tc-point must be measured in thermal equilibrium in accordance with IEC EN 60598-1.