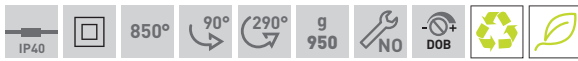
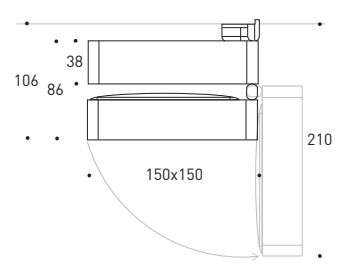
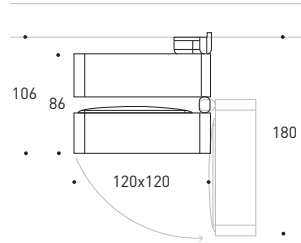
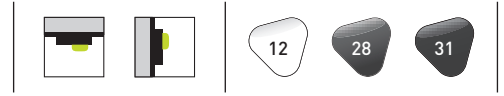




# SPLYT SYSTEM

design by: LAPD

Projector for 3-circuit track mounting



17 W		1500 lm					
LED	driver reference	product reference	beam width	lumen reference		finish reference	
				nom. lm	K	CRI	
∅		<b>BF3D0</b>	7°	<b>HQ</b>	1235	3000 >90	<b>12</b>
				<b>WW</b>	1545	3000 >80	<b>28</b>
				<b>NN</b>	1670	4000 >80	<b>31</b>
D							
T							

31 W		3000 lm					
LED	driver reference	product reference	beam width	lumen reference		finish reference	
				nom. lm	K	CRI	
∅		<b>BF3G0</b>	7°	<b>HQ</b>	2240	3000 >90	<b>12</b>
				<b>WW</b>	2800	3000 >80	<b>28</b>
				<b>NN</b>	3025	4000 >80	<b>31</b>
D							
T							

∅		<b>CF3D0</b>	22°	<b>HQ</b>	1235	3000 >90	<b>12</b>
				<b>WW</b>	1545	3000 >80	<b>28</b>
				<b>NN</b>	1670	4000 >80	<b>31</b>
D							
T							

∅		<b>CF3G0</b>	22°	<b>HQ</b>	2240	3000 >90	<b>12</b>
				<b>WW</b>	2800	3000 >80	<b>28</b>
				<b>NN</b>	3025	4000 >80	<b>31</b>
D							
T							

∅		<b>DF3D0</b>	42°	<b>HQ</b>	1235	3000 >90	<b>12</b>
				<b>WW</b>	1545	3000 >80	<b>28</b>
				<b>NN</b>	1670	4000 >80	<b>31</b>
D							
T							

∅		<b>DF3G0</b>	42°	<b>HQ</b>	2240	3000 >90	<b>12</b>
				<b>WW</b>	2800	3000 >80	<b>28</b>
				<b>NN</b>	3025	4000 >80	<b>31</b>
D							
T							

possible configuration **∅, BF3D0, HQ, 12**

possible configuration **∅, BF3G0, HQ, 12**

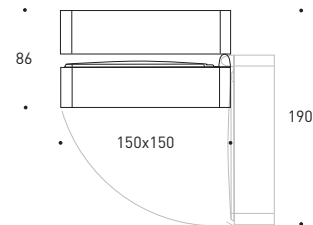
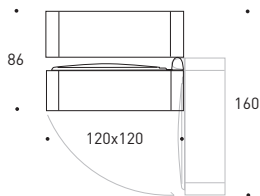


Accessories (pg. 133). Components for track (pg. 548-553).  
Photometric data (pg. 741).



Accessories (pg. 133). Components for track (pg. 548-553).  
Photometric data (pg. 741).

Surface-mounted projector



17 W		1500 lm					
LED	driver reference	product reference	beam width	lumen reference		finish reference	
				nom. lm	K	CRI	
[Ø]		UF3DØ	7°	[HQ]	1235	3000 >90	[12]
				[WW]	1545	3000 >80	[28]
				[NN]	1670	4000 >80	[31]
[D]							
[T]							

31 W		3000 lm					
LED	driver reference	product reference	beam width	lumen reference		finish reference	
				nom. lm	K	CRI	
[Ø]		UF3GØ	7°	[HQ]	2240	3000 >90	[12]
				[WW]	2800	3000 >80	[28]
				[NN]	3025	4000 >80	[31]
[D]							
[T]							

[Ø]	VF3DØ	22°	[HQ]	1235	3000 >90	[12]
			[WW]	1545	3000 >80	[28]
			[NN]	1670	4000 >80	[31]
[D]						
[T]						

[Ø]	VF3GØ	22°	[HQ]	2240	3000 >90	[12]
			[WW]	2800	3000 >80	[28]
			[NN]	3025	4000 >80	[31]
[D]						
[T]						

[Ø]	ZF3DØ	42°	[HQ]	1235	3000 >90	[12]
			[WW]	1545	3000 >80	[28]
			[NN]	1670	4000 >80	[31]
[D]						
[T]						

[Ø]	ZF3GØ	42°	[HQ]	2240	3000 >90	[12]
			[WW]	2800	3000 >80	[28]
			[NN]	3025	4000 >80	[31]
[D]						
[T]						

possible configuration [Ø], UF3DØ, [HQ], [12]

possible configuration [Ø], UF3GØ, [HQ], [12]

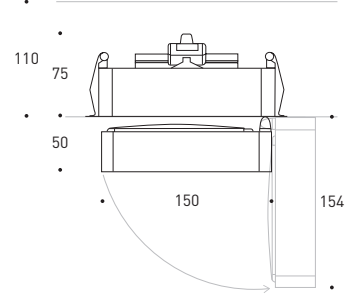
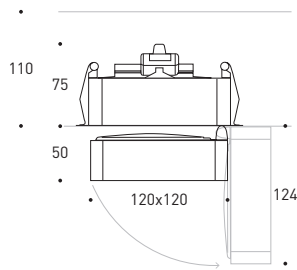
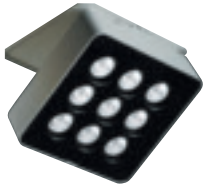


Accessories (pg. 133).  
Photometric data (pg. 741).



Accessories (pg. 133).  
Photometric data (pg. 741).

Semi-recessed projector with bezel and remote driver



17 W		1500 lm					
LED	driver reference	product reference	beam width	lumen reference		finish reference	
				nom. lm	K	CRI	
∅		<b>LF3D0</b>	7°	<b>HQ</b> 1235	3000	>90	<b>12</b>
				<b>WW</b> 1545	3000	>80	<b>28</b>
				<b>NN</b> 1670	4000	>80	<b>31</b>
D							
T							

31 W		3000 lm					
LED	driver reference	product reference	beam width	lumen reference		finish reference	
				nom. lm	K	CRI	
∅		<b>LF3G0</b>	7°	<b>HQ</b> 2240	3000	>90	<b>12</b>
				<b>WW</b> 2800	3000	>80	<b>28</b>
				<b>NN</b> 3025	4000	>80	<b>31</b>
D							
T							

∅		<b>MF3D0</b>	22°	<b>HQ</b> 1235	3000	>90	<b>12</b>
				<b>WW</b> 1545	3000	>80	<b>28</b>
				<b>NN</b> 1670	4000	>80	<b>31</b>
D							
T							

∅		<b>MF3G0</b>	22°	<b>HQ</b> 2240	3000	>90	<b>12</b>
				<b>WW</b> 2800	3000	>80	<b>28</b>
				<b>NN</b> 3025	4000	>80	<b>31</b>
D							
T							

∅		<b>NF3D0</b>	42°	<b>HQ</b> 1235	3000	>90	<b>12</b>
				<b>WW</b> 1545	3000	>80	<b>28</b>
				<b>NN</b> 1670	4000	>80	<b>31</b>
D							
T							

∅		<b>NF3G0</b>	42°	<b>HQ</b> 2240	3000	>90	<b>12</b>
				<b>WW</b> 2800	3000	>80	<b>28</b>
				<b>NN</b> 3025	4000	>80	<b>31</b>
D							
T							

possible configuration **∅-LF3D0-HQ-12**

possible configuration **∅-LF3G0-HQ-12**

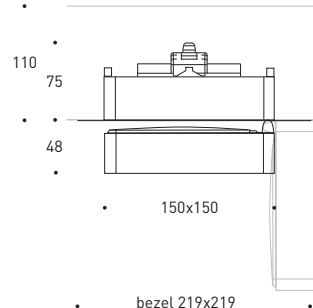
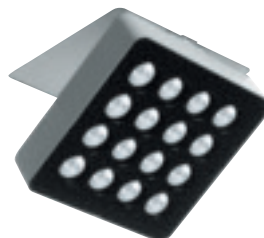
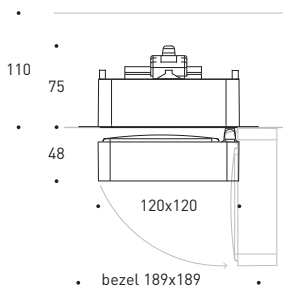


Accessories (pg. 133).  
Photometric data (pg. 741).



Accessories (pg. 133).  
Photometric data (pg. 741).

Semi-recessed trimless projector with remote driver



17 W		1500 lm					
LED	driver reference	product reference	beam width	lumen reference			finish reference
				nom. lm	K	CRI	
∅		<b>PF3D∅</b>	7°	<b>HQ</b>	1235	3000 >90	<b>12</b>
				<b>WW</b>	1545	3000 >80	<b>28</b>
				<b>NN</b>	1670	4000 >80	<b>31</b>
D							
T							

31 W		3000 lm					
LED	driver reference	product reference	beam width	lumen reference			finish reference
				nom. lm	K	CRI	
∅		<b>PF3G∅</b>	7°	<b>HQ</b>	2240	3000 >90	<b>12</b>
				<b>WW</b>	2800	3000 >80	<b>28</b>
				<b>NN</b>	3025	4000 >80	<b>31</b>
D							
T							

∅	<b>RF3D∅</b>	22°	<b>HQ</b>	1235	3000 >90	<b>12</b>
			<b>WW</b>	1545	3000 >80	<b>28</b>
			<b>NN</b>	1670	4000 >80	<b>31</b>
D						
T						

∅	<b>RF3G∅</b>	22°	<b>HQ</b>	2240	3000 >90	<b>12</b>
			<b>WW</b>	2800	3000 >80	<b>28</b>
			<b>NN</b>	3025	4000 >80	<b>31</b>
D						
T						

∅	<b>TF3D∅</b>	42°	<b>HQ</b>	1235	3000 >90	<b>12</b>
			<b>WW</b>	1545	3000 >80	<b>28</b>
			<b>NN</b>	1670	4000 >80	<b>31</b>
D						
T						

∅	<b>TF3G∅</b>	42°	<b>HQ</b>	2240	3000 >90	<b>12</b>
			<b>WW</b>	2800	3000 >80	<b>28</b>
			<b>NN</b>	3025	4000 >80	<b>31</b>
D						
T						

possible configuration ∅, PF3D∅, HQ, 12

possible configuration ∅, PF3G∅, HQ, 12

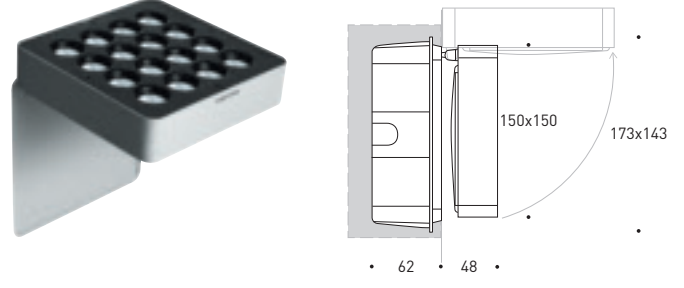
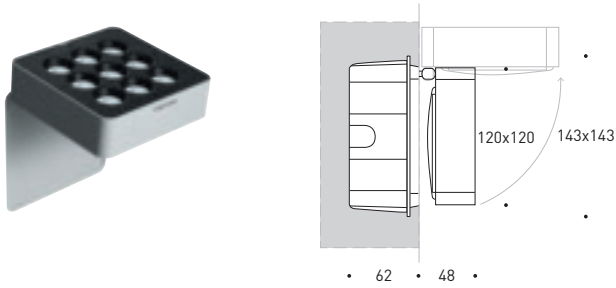


Accessories (pg. 133).  
Photometric data (pg. 741).



Accessories (pg. 133).  
Photometric data (pg. 741).

Wall-mounted projector



17 W		1500 lm					
LED	driver reference	product reference	beam width	lumen reference		finish reference	
				nom. lm	K	CRI	
∅		<b>FF3D0</b>	7°	<b>HQ</b>	1235	3000 >90	<b>12</b>
				<b>WW</b>	1545	3000 >80	<b>28</b>
				<b>NN</b>	1670	4000 >80	<b>31</b>
D							
T							

31 W		3000 lm					
LED	driver reference	product reference	beam width	lumen reference		finish reference	
				nom. lm	K	CRI	
∅		<b>FF3G0</b>	7°	<b>HQ</b>	2240	3000 >90	<b>12</b>
				<b>WW</b>	2800	3000 >80	<b>28</b>
				<b>NN</b>	3025	4000 >80	<b>31</b>
D							
T							

∅	<b>GF3D0</b>	22°	<b>HQ</b>	1235	3000 >90	<b>12</b>
			<b>WW</b>	1545	3000 >80	<b>28</b>
			<b>NN</b>	1670	4000 >80	<b>31</b>
D						
T						

∅	<b>GF3G0</b>	22°	<b>HQ</b>	2240	3000 >90	<b>12</b>
			<b>WW</b>	2800	3000 >80	<b>28</b>
			<b>NN</b>	3025	4000 >80	<b>31</b>
D						
T						

∅	<b>HF3D0</b>	42°	<b>HQ</b>	1235	3000 >90	<b>12</b>
			<b>WW</b>	1545	3000 >80	<b>28</b>
			<b>NN</b>	1670	4000 >80	<b>31</b>
D						
T						

∅	<b>HF3G0</b>	42°	<b>HQ</b>	2240	3000 >90	<b>12</b>
			<b>WW</b>	2800	3000 >80	<b>28</b>
			<b>NN</b>	3025	4000 >80	<b>31</b>
D						
T						

possible configuration **∅**, **FF3D0**, **HQ**, **12**

possible configuration **∅**, **FF3G0**, **HQ**, **12**



Accessories (pg. 133).  
Photometric data (pg. 741).



Accessories (pg. 133).  
Photometric data (pg. 741).

Accessories  
LED



SPLYT	details	reference	finish reference			
	honeycomb louvre	0.22120.00	<table border="1"> <tr><td>12</td></tr> <tr><td>28</td></tr> <tr><td>31</td></tr> </table>	12	28	31
12						
28						
31						
	anti-glare shield	0.22100.00	<table border="1"> <tr><td>12</td></tr> <tr><td>28</td></tr> <tr><td>31</td></tr> </table>	12	28	31
12						
28						
31						
	optics Wall Washer	0.22140.00	<table border="1"> <tr><td>12</td></tr> <tr><td>28</td></tr> <tr><td>31</td></tr> </table>	12	28	31
12						
28						
31						
possible configuration		0.22120.00	12			

SPLYT	details	reference	finish reference			
	honeycomb louvre	0.22130.00	<table border="1"> <tr><td>12</td></tr> <tr><td>28</td></tr> <tr><td>31</td></tr> </table>	12	28	31
12						
28						
31						
	anti-glare shield	0.22110.00	<table border="1"> <tr><td>12</td></tr> <tr><td>28</td></tr> <tr><td>31</td></tr> </table>	12	28	31
12						
28						
31						
	optics Wall Washer	0.22150.00	<table border="1"> <tr><td>12</td></tr> <tr><td>28</td></tr> <tr><td>31</td></tr> </table>	12	28	31
12						
28						
31						
possible configuration		0.22130.00	12			

ACCESSORY INSTALLATION

1  
honeycomb louvre

2  
anti-glare shield

3  
Wall Washer optics



1



2



3