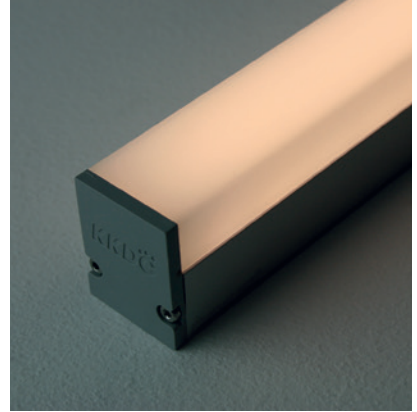


Linear

LiNi Glow XL 207 Fixture Guide

KKDÖ

Indoor | Surface | Low dynamic output up to 530lm/m (158lm/ft)

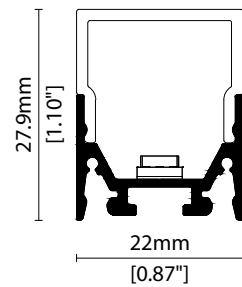


Key applications

- ✓ Architectural detail
- ✓ Ceiling
- ✓ Cove lighting
- ✓ Downlighting
- ✓ Indirect lighting
- ✓ Interior
- ✓ Mirror back lighting
- ✓ Shelving display
- ✓ Special effect
- ✓ Under bench
- ✓ Under cabinet

Key features

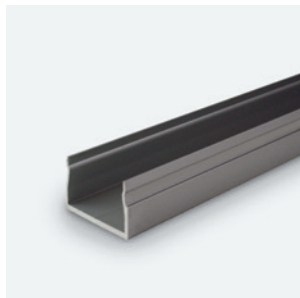
- ✓ Custom lengths
- ✓ Diffusion: Homogenous
- ✓ Direct view
- ✓ Dynamic white
- ✓ Extensive CCT range
- ✓ Form factor: Medium
- ✓ IP40
- ✓ Output low



MOUNTING METHODS



KKCP-11 Concealed clip



KKCR-01-1000 Cable raceway (1000mm)
KKCR-02-2000 Cable raceway (2000mm)
KKCR-03-3000 Cable raceway (3000mm)



KKJT-02 Joining bar

LEDMIX CCT COMBINATION TABLE

Selection 1 (CCT)		Selection 2 (CCT)	Combination Range (CCT)	
WARM	1900K	2100K	1900K - 2000K	1900K - 2100K
		2300K	1900K - 2100K	1900K - 2300K
		2500K	1900K - 2200K	1900K - 2500K
		2700K	1900K - 2300K	1900K - 2700K
		3000K	1900K - 2450K	1900K - 3000K
		3200K	1900K - 2550K	1900K - 3200K
		3500K	1900K - 2700K	1900K - 3500K
		4000K	1900K - 2950K	1900K - 4000K
		5000K	1900K - 3450K	1900K - 5000K
	2100K	2300K	2100K - 2200K	2100K - 2300K
		2500K	2100K - 2280K	2100K - 2500K
		2700K	2100K - 2410K	2100K - 2700K
		3000K	2100K - 2570K	2100K - 3000K
		3200K	2100K - 2650K	2100K - 3200K
		3500K	2100K - 2780K	2100K - 3500K
		4000K	2100K - 3040K	2100K - 4000K
		5000K	2100K - 3560K	2100K - 5000K
	2300K	2500K	2300K - 2380K	2300K - 2500K
		2700K	2300K - 2510K	2300K - 2700K
		3000K	2300K - 2670K	2300K - 3000K
		3200K	2300K - 2750K	2300K - 3200K
		3500K	2300K - 2880K	2300K - 3500K
		4000K	2300K - 3140K	2300K - 4000K
		5000K	2300K - 3660K	2300K - 5000K
	2500K	2700K	2500K - 2590K	2500K - 2700K
		3000K	2500K - 2750K	2500K - 3000K
		3200K	2500K - 2830K	2500K - 3200K
		3500K	2500K - 2960K	2500K - 3500K
		4000K	2500K - 3220K	2500K - 4000K
		5000K	2500K - 3750K	2500K - 5000K
WARM WHITE	2700K	3000K	2700K - 2890K	2700K - 3000K
		3200K	2700K - 2960K	2700K - 3200K
		3500K	2700K - 3100K	2700K - 3500K
		4000K	2700K - 3360K	2700K - 4000K
		5000K	2700K - 3880K	2700K - 5000K
	3000K	3200K	3000K - 3120K	3000K - 3200K
		3500K	3000K - 3260K	3000K - 3500K
		4000K	3000K - 3520K	3000K - 4000K
		5000K	3000K - 4040K	3000K - 5000K
			3200K	3500K
4000K	3200K - 3600K			3000K - 4000K
5000K	3200K - 4120K			3000K - 5000K
	3500K	4000K	3500K - 3730K	3500K - 4000K
		5000K	3500K - 4250K	3500K - 5000K
COOL WHITE	4000K	5000K	4000K - 4510K	4000K - 5000K

Linear

LiNi Glow XL 207

Specification sheet



Dimension	H28/W22/L94.3-2011mm (H1.1/W0.87/L3.71-79.17in)	
PCB increment	83.3mm increment/2000mm max (3.28in increment/78.74in max)	
LED pitch	13.9mm - 72 LED/m (0.55in - 22LED/ft) between same colored LEDs	
Chip	s-line	Toyoda Gosei
	k-line	Samsung
Beam angle	156° (Diffused Cover)	
Colours	s-line	2100K/2500K/2700K/3000K/3500K/4000K/5000K
	k-line	1900K/2100K/2500K/2700K/3000K/3500K/4000K/5000K
Bin/Step	s-line	2.5-step MacAdam ellipse
	k-line	3-step MacAdam ellipse
CRI	≥ 90	
Lifetime	50,000 hours @ 25°C (50,000 hours @ 77°F)	
Operating temp	T _a = -25 to 60°C (T _C max = 70.9°C) T _a = -13 to 140°F (T _C max = 159.6°F)	
IP rating	IP40	
Finish	Silver anodised	
Cover/lens	Diffused	
Mounting	Surface mounting via concealed clips or cable raceway	
Power feed	Hardwire tails or male/female connectors	
Control	0-10V/1-10V/DMX/DALI	



LED Grading Key

Exclusive Grade

s s-line*	*KKDC tuned CCT range
2.5-step CCT range	CCT range

Base Grade

k k-line	3-step commercial range Energy Star CCTs
------------------------	---

PERFORMANCE DATA @2100K + 5000K

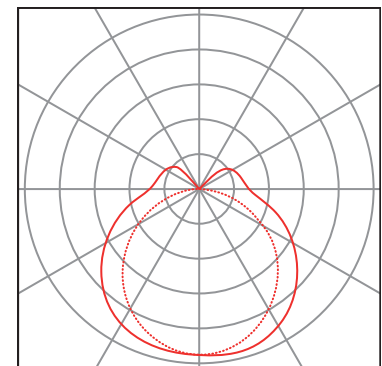
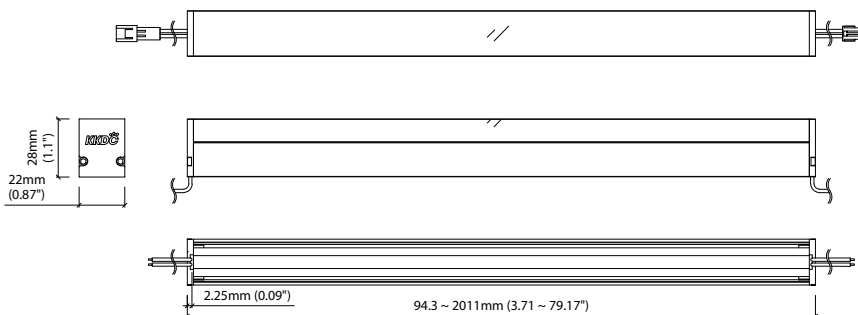
Power consumption	Supply voltage	Supply current
11W/m (3.35W/ft)	24V DC	0.46A/m (0.14A/ft)

Colour Rendering Index (CRI)

	R1	R2	R3	R4	R5	R6	R7	R8	R9	R10	R11	R12	R13	R14
k-line	94	97	98	93	93	96	92	83	60	93	94	82	95	99

Diffused Cover

						CRI	R9	Rf	Rg
s-line	530lm/m (161lm/ft)	48.3lm/W				95	85	-	-
k-line	520lm/m (158lm/ft)	47.4lm/W				92	60	-	-



Diffused Cover
— C0 / C180 cd / 1000 lm - - - C90 / C270

Data derived from independent UKAS/IESNA LM-79-08 accredited testing of production samples.

See KKDC website for product document updates.

www.kkdc.lighting

LiNiGlowXL207S-02.03EN-20200116

LiNi Glow XL 207

Code Table



FIXTURE

Model	Finish	Cover	Grade*	LED	Colour (CCT)	Length Availability**	IP	Cable Length	Power Feed***	Input			
LiNi Glow XL	GX	Silver Anodised	SA	Diffused U cover	0	s k	207	1900K ² 19 2100K 21 2500K 25 2700K 27 3000K 30 3500K 35 4000K 40 5000K 50	m 94.3-2011mm 83.3mm increments i 3.71-79.17in 3.28in increments (Specify length code OR total run length)	IP40 40	300mm/11.81" 0300 1000mm/39.37" 1000	Single no sheath tail S00X Double no sheath tail D00X Single no sheath IP20 connector S20X Double no sheath IP20 connector D20X	DC 24V g

¹ LEDmix requires two colour temperature choices

² 1900K is only available in k-line

* Refer to **LED Grading Key** on **Specification sheet** page

** Refer to **Length Availability List** or enter total run length instead of length code

*** Refer to **Power Feed Options** on **Options** pages

Code Example:

GX	-	SA	-	0	-	s	-	207	-	2150	-	m	511	-	40	-	0300	-	D20X	-	g
LiNi Glow XL		Silver Anodised		Diffused U cover		s		207		2100K+5000K		510.8mm		IP40		300mm/11.81"		Double no sheath tail		DC 24V	

ACCESSORIES

Mounting Accessories

KKCP-11	Concealed Clip
KKCR-01-1000	1000mm/39.37" Cable Raceway
KKCR-01-2000	2000mm/78.74" Cable Raceway
KKCR-01-3000	3000mm/118.11" Cable Raceway
KKJT-02	Joining Bar

Connection Accessories

KKCN-18	4 PIN LEDmix male & female 50mm/1.97" pair
KKCN-19	4 PIN LEDmix male & female 300mm/11.81" pair
KKCN-24	4 PIN LEDmix 300mm/11.81" extension lead

* Refer to **Power feed** on **Accessories** pages

PSU/Driver

0-10V/1-10V/Dali/DMX

* Refer to **Driver/PSU Options** page for details or provide requirement and KKDC to offer the suitable option

* Refer to **Mounting options** on **Accessories** pages

LED ENGINE VARIANTS (LED STRIP TYPE)

Colour	Output	LED	Lumen/m	Lumen/ft	W/m	W/ft	Spec Doc	Length	Increment
Single CCT	Low	352	300	91	5.5	1.67	LiNi Glow XL 352	94.3-2011mm/3.71-79.17in	83.3mm/3.28in
	Mid	504	750	229	12.5	3.81	LiNi Glow XL 504	111-2011mm/4.37-79.17in	100mm/3.94in
	Mid	508	1040	317	17.5	5.33	LiNi Glow XL 508	82.4-2011mm/3.24-79.17in	71.4mm/2.81in
Warm Dim/Dynamic White	Low	207	530	161	11	3.35	LiNi Glow XL 207	94.3-2011mm/3.71-79.17in	83.3mm/3.28in
RGB	Mid	208	920	311	15.6	4.75	LiNi Glow XL 208	177.7-2011mm/7.00-79.17in	166.7mm/6.56in
		501	Red 90 Green 193 Blue 32 RGB 280	Red 27 Green 59 Blue 10 RGB 85	15.6	4.75	LiNi Glow XL RGB	94.3-2011mm/3.71-79.17in	83.3mm/3.28in

* Performance data: s-line, diffused Cover, 2100K + 5000K

LiNi Glow XL 207

Length Availability List

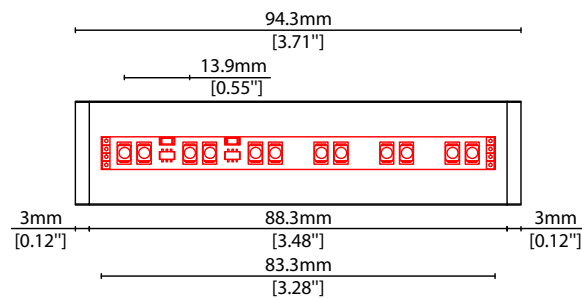


Length Code		Fixture Length ¹		LED Strip ²		End Cap Dimension ³		Wattage (W)	Output (lm)
Metric	Imperial(US)	Metric	Imperial(US)	Metric	Imperial(US)	Metric	Imperial(US)		MIX (Test Data)
m0094	i0004	94mm	3.71in	83mm	3.28in	6mm	0.24in	0.92	43
m0178	i0007	178mm	7.00in	167mm	6.56in	6mm	0.24in	1.83	87
m0261	i0010	261mm	10.28in	250mm	9.84in	6mm	0.24in	2.75	130
m0344	i0014	344mm	13.56in	333mm	13.12in	6mm	0.24in	3.67	174
m0428	i0017	428mm	16.84in	417mm	16.41in	6mm	0.24in	4.58	217
m0511	i0020	511mm	20.12in	500mm	19.69in	6mm	0.24in	5.50	261
m0594	i0023	594mm	23.40in	583mm	22.97in	6mm	0.24in	6.42	304
m0678	i0027	678mm	26.68in	667mm	26.25in	6mm	0.24in	7.33	348
m0761	i0030	761mm	29.96in	750mm	29.53in	6mm	0.24in	8.25	391
m0844	i0033	844mm	33.24in	833mm	32.81in	6mm	0.24in	9.17	435
m0928	i0037	928mm	36.53in	917mm	36.09in	6mm	0.24in	10.08	478
m1011	i0040	1011mm	39.81in	1000mm	39.37in	6mm	0.24in	11.00	521
m1094	i0043	1094mm	43.09in	1083mm	42.65in	6mm	0.24in	11.92	565
m1178	i0046	1178mm	46.37in	1167mm	45.94in	6mm	0.24in	12.83	608
m1261	i0050	1261mm	49.65in	1250mm	49.22in	6mm	0.24in	13.75	652
m1344	i0053	1344mm	52.93in	1333mm	52.50in	6mm	0.24in	14.67	695
m1428	i0056	1428mm	56.21in	1417mm	55.78in	6mm	0.24in	15.58	739
m1511	i0059	1511mm	59.49in	1500mm	59.06in	6mm	0.24in	16.50	782
m1594	i0063	1594mm	62.77in	1583mm	62.34in	6mm	0.24in	17.42	826
m1678	i0066	1678mm	66.06in	1667mm	65.62in	6mm	0.24in	18.33	869
m1761	i0069	1761mm	69.34in	1750mm	68.90in	6mm	0.24in	19.25	912
m1844	i0073	1844mm	72.62in	1833mm	72.18in	6mm	0.24in	20.17	956
m1928	i0076	1928mm	75.90in	1917mm	75.47in	6mm	0.24in	21.08	999
m2011	i0079	2011mm	79.18in	2000mm	78.75in	6mm	0.24in	22.00	1043

¹ Actual total overall length of light fixture (LED strip + end caps + void/wire hole)

² Actual length of PCB strip

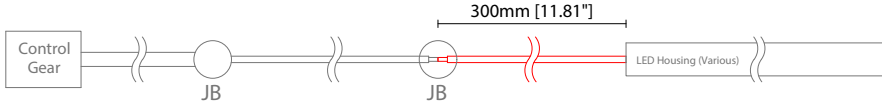
³ Actual length of 2x end caps



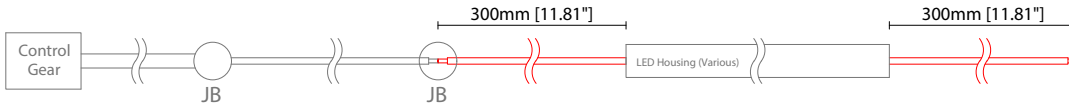
POWER FEED OPTIONS

* Options are an integral part of the fixture ordering codes. Please refer to **Code Table** pages.

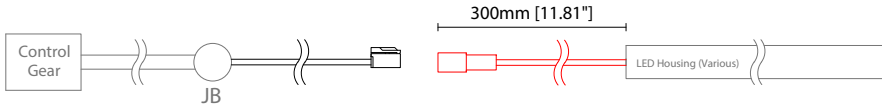
0300 S00X 300mm (11.81") Single no sheath tail



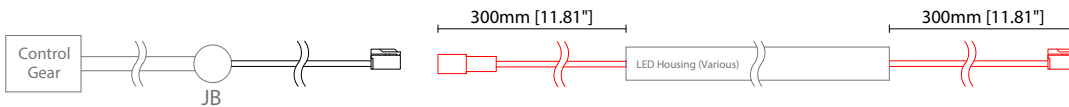
0300 D00X 300mm (11.81") Double no sheath tail



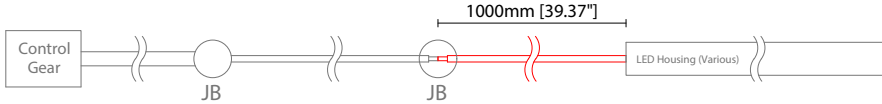
0300 S20X 300mm (11.81") Single no sheath IP20 connector



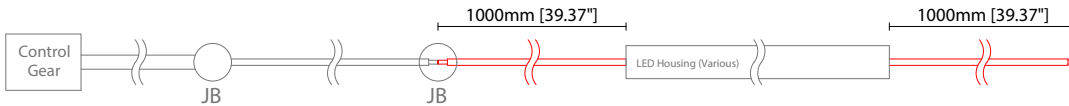
0300 D20X 300mm (11.81") Double no sheath IP20 connector



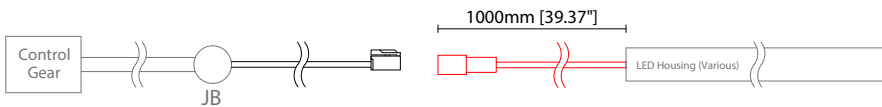
1000 S00X 1000mm (39.37") Single no sheath tail



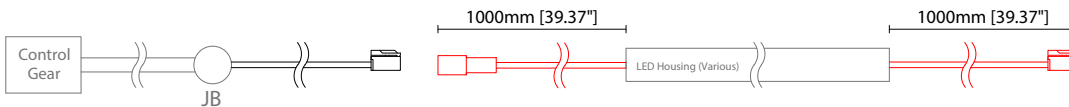
1000 D00X 1000mm (39.37") Double no sheath tail



1000 S20X 1000mm (39.37") Single no sheath IP20 connector



1000 D20X 1000mm (39.37") Double no sheath IP20 connector



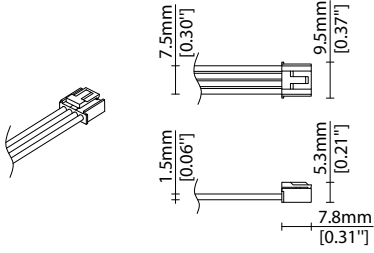
Key

Control Gear Power supply, sub-controllers & control systems

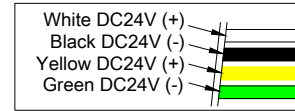
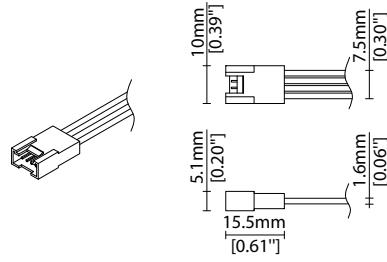
JB Junction box / cable connection

POWER FEED OPTIONS (CONTINUED)

4 Pin LEDmix Female Connector



4 Pin LEDmix Male Connector

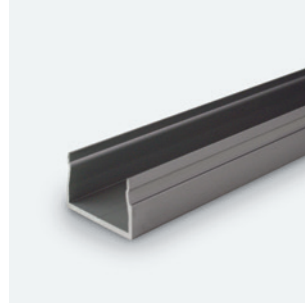
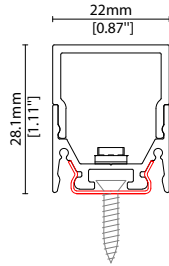


MOUNTING OPTIONS

Note: Accessories are to be ordered separately with corresponding code shown below.

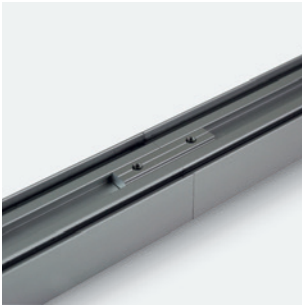
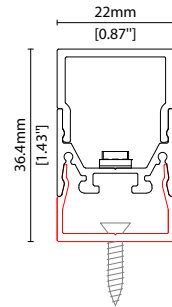


KKCP-11
 Concealed clip
 (allow 3 per metre/40in)
 S/Steel finish

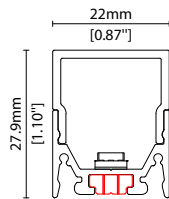


KKCR-01-1000 1000mm (39.37in)
KKCR-01-2000 2000mm (78.74in)
KKCR-01-3000 3000mm (118.11in)

Cable raceway*
 Anodised aluminium finish
 * Cut & drilled to fit on site



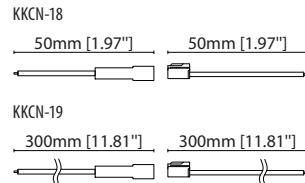
KKJT-02
 Joining bar* (allow 1 per join)
 Anodised aluminium finish
 * Mounting option required with
 Joining bar



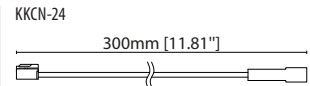
POWER FEED



KKCN-18 50mm (1.97in) pair
KKCN-19 300mm (11.81in) pair
 4 PIN LEDmix male + female
 connector set



KKCN-24
 4 PIN LEDmix 300mm (11.81in)
 extension lead



KKDC CONTROL



IP20
Black plastic housing
L164/W64/H34mm
(L6.46/W2.52/H1.34in)

KKDM-05 1-10V
visDIM dimmable sub-controller



IP20
Black plastic housing
L164/W64/H34mm
(L6.46/W2.52/H1.34in)

KKSC-03A DMX (screw terminal)
visDIM dimmable sub-controller



IP20
Black plastic housing
L164/W64/H34mm
(L6.46/W2.52/H1.34in)

KKSC-03B DMX (RJ45)
visDIM dimmable sub-controller



IP20
Plastic housing
L170/W59/H29mm
(L6.69/W2.32/H1.14in)

KKDL-02 DALI
visDIM dimmable sub-controller
(4 x 8A max @ 12-36V)



IP20
Plastic housing
L166/W53.4/H23mm
(L6.54/W2.10/H0.91in)

KKDL-03 DALI
visDIM dimmable sub-controller
(4 x 5A max @ 12-36V)

AVAILABLE PSU OPTIONS

Control Mode	PSU (Order Code)	Input Voltage AC	Output Voltage DC	Rated Output Current	Rated Power	Dim %	IP Rating
Switched	CEN-60-24	90-295V	24V	2.5A	60W	-	IP67
	HLG-60H-24	90-305V	24V	2.5A	60W	-	IP67
	HLG-100H-24	90-305V	24V	4.0A	100W	-	IP67
	HLG-150H-24	90-305V	24V	6.3A	150W	-	IP67
	HLG-240H-24	90-305V	24V	10A	240W	-	IP67
0-10V (1-10V)	PWM-40-24	90-305V	24V	1.67A	40W	100-0.15 (100-10)	IP67
	PWM-60-24	90-305V	24V	2.5A	60W	100-0.15 (100-10)	IP67
	PWM-90-24	90-305V	24V	3.67A	90W	100-0.15 (100-10)	IP67
	PWM-120-24	90-305V	24V	5.0A	120W	100-0.15 (100-10)	IP67
DALI	LIN100A1	120-277V	24V	1A per channel	100W	100-0.1	IP66/IP40
DMX RGB	LIN100A1	120-277V	24V	1.33A per channel	100W	100-0.1	IP66/IP40
DMX RGBW	LIN100A1	120-277A	24V	1A per channel	100W	100-0.1	IP66/IP40

Flicker Free Options - Combination of PSU+ sub-controller

Control Mode	PSU (Order Code)	Sub-controller (Order Code)	Input Voltage AC	Output Voltage DC	Rated Output Current	Rated Power	Dim %	IP Rating PSU/ Sub-controller
0-10V or 1-10V	CEN-60-24	KKDM-05	90-295V	24V	2.5A	60W	100-0.9	IP67/IP20
	HLG-60H-24	KKDM-05	90-295V	24V	2.5A	60W	100-0.9	IP67/IP20
	HLG-100H-24	KKDM-05	90-295V	24V	4.0A	100W	100-0.9	IP67/IP20
	HLG-150H-24	KKDM-05	90-295V	24V	6.3A	150W	100-0.9	IP67/IP20
	HLG-240H-24	KKDM-05	90-295V	24V	10.0A	240W	100-0.9	IP67/IP20
DALI	CEN-60-24	KKDL-02/03	90-295V	24V	2.5A	60W	100-0.1	IP67/IP20
	HLG-60H-24	KKDL-02/03	90-305V	24V	2.5A	60W	100-0.1	IP67/IP20
	HLG-100H-24	KKDL-02/03	90-305V	24V	4.0A	100W	100-0.1	IP67/IP20
	HLG-150H-24	KKDL-02/03	90-305V	24V	6.3A	150W	100-0.1	IP67/IP20
	HLG-240H-24	KKDL-02/03	90-305V	24V	10.0A	240W	100-0.1	IP67/IP20
DMX RGB	CEN-60-24	KKSC-03	90-295V	24V	2.5A	60W	100-0.9	IP67/IP20
	HLG-60H-24	KKSC-03	90-305V	24V	2.5A	60W	100-0.9	IP67/IP20
	HLG-100H-24	KKSC-03	90-305V	24V	4A	100W	100-0.9	IP67/IP20
	HLG-150H-24	KKSC-03	90-305V	24V	6.3A	150W	100-0.9	IP67/IP20
	HLG-240H-24	KKSC-03	90-305V	24V	10.0A	240W	100-0.9	IP67/IP20

¹ The items shown above cover the most frequently used specification but does not exhaust the possible options

² PSU and/or driver can be chosen from the table, or KKDC may recommend the best option upon receipt of the controls requirement and installation environment

³ Electrical shop drawing will include detailed information of PSU and relevant control drivers

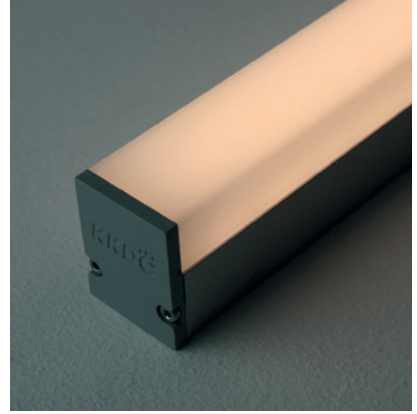
⁴ Cut sheets are available on the controls section of www.kkdc.lighting or upon request

Linear

LiNi Glow XL 208 Fixture Guide

KKDÖ

Indoor | Surface | Mid dynamic output up to 920lm/m (311lm/ft)

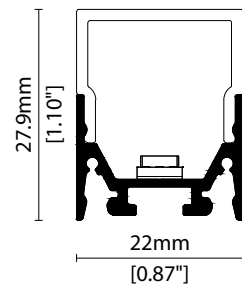


Key applications

- ✓ Architectural detail
- ✓ Ceiling
- ✓ Cove lighting
- ✓ Downlighting
- ✓ Interior
- ✓ Indirect lighting
- ✓ Mirror back lighting
- ✓ Shelving display
- ✓ Special effect
- ✓ Under bench
- ✓ Under cabinet

Key features

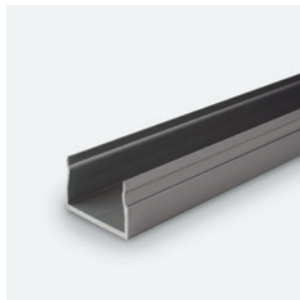
- ✓ Custom lengths
- ✓ Diffusion: Homogenous
- ✓ Direct view
- ✓ Dynamic white
- ✓ Extensive CCT range
- ✓ Form factor: Medium
- ✓ IP40
- ✓ Output mid



MOUNTING METHODS



KKCP-11 Concealed clip

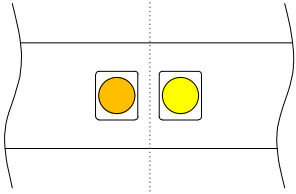
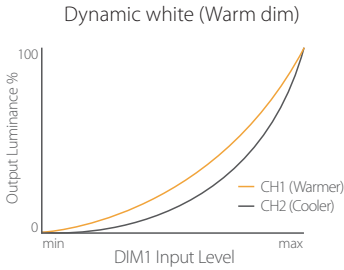
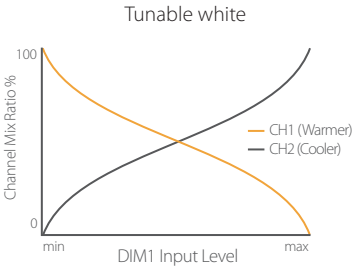


KKCR-01-1000 Cable raceway (1000mm)
KKCR-02-2000 Cable raceway (2000mm)
KKCR-03-3000 Cable raceway (3000mm)



KKJT-02 Joining bar

LEDMIX CCT COMBINATION TABLE

Selection 1 (CCT)		Selection 2 (CCT)	Combination Range (CCT)	
				
WARM	1900K	2100K	1900K - 2000K	1900K - 2100K
		2300K	1900K - 2100K	1900K - 2300K
		2500K	1900K - 2200K	1900K - 2500K
		2700K	1900K - 2300K	1900K - 2700K
		3000K	1900K - 2450K	1900K - 3000K
		3200K	1900K - 2550K	1900K - 3200K
		3500K	1900K - 2700K	1900K - 3500K
		4000K	1900K - 2950K	1900K - 4000K
		5000K	1900K - 3450K	1900K - 5000K
	2100K	2300K	2100K - 2200K	2100K - 2300K
		2500K	2100K - 2280K	2100K - 2500K
		2700K	2100K - 2410K	2100K - 2700K
		3000K	2100K - 2570K	2100K - 3000K
		3200K	2100K - 2650K	2100K - 3200K
		3500K	2100K - 2780K	2100K - 3500K
		4000K	2100K - 3040K	2100K - 4000K
		5000K	2100K - 3560K	2100K - 5000K
	2300K	2500K	2300K - 2380K	2300K - 2500K
		2700K	2300K - 2510K	2300K - 2700K
		3000K	2300K - 2670K	2300K - 3000K
		3200K	2300K - 2750K	2300K - 3200K
		3500K	2300K - 2880K	2300K - 3500K
		4000K	2300K - 3140K	2300K - 4000K
		5000K	2300K - 3660K	2300K - 5000K
	2500K	2700K	2500K - 2590K	2500K - 2700K
		3000K	2500K - 2750K	2500K - 3000K
		3200K	2500K - 2830K	2500K - 3200K
		3500K	2500K - 2960K	2500K - 3500K
		4000K	2500K - 3220K	2500K - 4000K
		5000K	2500K - 3750K	2500K - 5000K
WARM WHITE	2700K	3000K	2700K - 2890K	2700K - 3000K
		3200K	2700K - 2960K	2700K - 3200K
		3500K	2700K - 3100K	2700K - 3500K
		4000K	2700K - 3360K	2700K - 4000K
		5000K	2700K - 3880K	2700K - 5000K
	3000K	3200K	3000K - 3120K	3000K - 3200K
		3500K	3000K - 3260K	3000K - 3500K
		4000K	3000K - 3520K	3000K - 4000K
		5000K	3000K - 4040K	3000K - 5000K
	3200K	3500K	3200K - 3330K	3000K - 3500K
		4000K	3200K - 3600K	3000K - 4000K
		5000K	3200K - 4120K	3000K - 5000K
	3500K	4000K	3500K - 3730K	3500K - 4000K
		5000K	3500K - 4250K	3500K - 5000K
COOL WHITE	4000K	5000K	4000K - 4510K	4000K - 5000K

Linear

LiNi Glow XL 208

Specification sheet



Dimension	H28/W22/L177.7-2011mm (H1.1/W0.87/L7-79.17in)	
PCB increment	166.7mm increment/2000mm max (6.56in increment/78.74in max)	
LED pitch	23.8mm - 42LED/m (0.94in - 13LED/ft) between same coloured LEDs	
Chip	s-line	Toyoda Gosei
	k-line	Samsung
Beam angle	156° (Diffused Cover)	
Colours	s-line	2100K/2300K/2500K/2700K/3000K/3200K/3500K/4000K/5000K
	k-line	1900K/2100K/2500K/2700K/3000K/3500K/4000K/5000K
Bin/Step	s-line	2.5-step MacAdam ellipse
	k-line	3-step MacAdam ellipse
CRI	≥ 90	
Lifetime	50,000 hours @ 25°C (50,000 hours @ 77°F)	
Operating temp	T _a = -25 to 60°C (T _C max = 73.4°C) T _a = -13 to 140°F (T _C max = 164.1°F)	
IP rating	IP40	
Finish	Silver anodised	
Cover/lens	Diffused	
Mounting	Surface mounting via concealed clips or cable raceway	
Power feed	Hardwire tails or male/female connectors	
Control	0-10V/1-10V/DMX/DALI	



LED Grading Key

Exclusive Grade

s s-line*	*KKDC tuned CCT range
2.5-step CCT range	CCT range

Base Grade

k k-line	3-step commercial range Energy Star CCTs
------------------------	---

PERFORMANCE DATA @ 2100K + 5000K

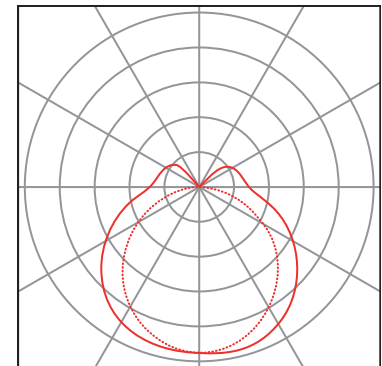
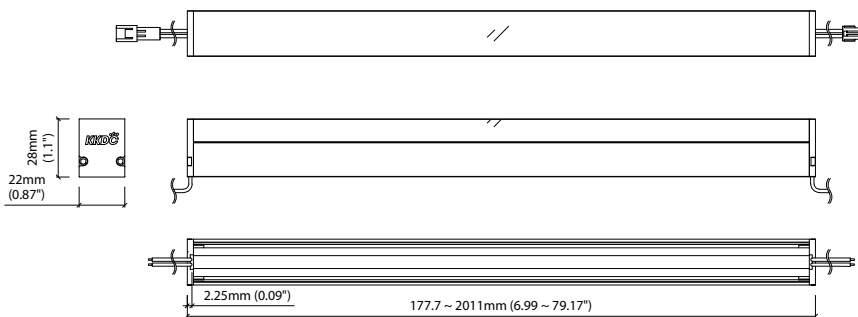
Power consumption	Supply voltage	Supply current
15.6W/m (4.75W/ft)	24V DC	0.65A/m (0.20A/ft)

Colour Rendering Index (CRI)

	R1	R2	R3	R4	R5	R6	R7	R8	R9	R10	R11	R12	R13	R14
k-line	94	97	98	93	93	96	92	83	60	93	94	82	95	99

Diffused Cover

	lm/m	lm/ft	CRI	R9	Rf	Rg
s-line	920lm/m	311lm/ft	94	75	-	-
k-line	820lm/m	253lm/ft	95	81	-	-



Diffused Cover
— C0 / C180 cd / 1000 lm - - - C90 / C270

Data derived from independent UKAS/IESNA LM-79-08 accredited testing of production samples.

FIXTURE

Model	Finish	Cover	Grade*	LED	Colour (CCT)	Length Availability**	IP	Cable Length	Power Feed***	Input										
LiNi Glow XL	GX	Silver Anodised SA	Diffused U cover	0	s	1900K ²	m	177.7-2011mm 166.7mm increments	IP40	40	300mm/11.81" 0300	Single no sheath tail S00X	DC 24V g							
						2100K								1000mm/39.37" 1000	Double no sheath tail D00X					
						2300K ²										i	7.00-79.17in 6.56in increments	Single no sheath IP20 connector S20X		
						2500K													(Specify length code OR total run length)	Double no sheath IP20 connector D20X
						2700K														
						3000K														
						3200K ²														
						3500K														
						4000K														
						5000K														

¹ LEDmix requires two colour temperature choices

² 1900K is only available in k-line, 2300K & 3200K are only available in s-line

* Refer to **LED Grading Key** on **Specification sheet** page

** Refer to **Length Availability List** or enter total run length instead of length code

*** Refer to **Power Feed Options** on **Options** pages

Code Example:

GX	-	SA	-	0	-	s	-	208	-	2150	-	m	-	511	-	40	-	0300	-	D00X	-	g
LiNi Glow XL		Silver Anodised		Diffused U cover				208		2100K+5000k		511.1mm		IP40		300mm/11.81"		Double no sheath tail		DC 24V		

ACCESSORIES

Mounting Accessories

KKCP-11	Concealed Clip
KKCR-01-1000	1000mm/39.37" Cable Raceway
KKCR-01-2000	2000mm/78.74" Cable Raceway
KKCR-01-3000	3000mm/118.11" Cable Raceway
KKJT-02	Joining Bar

* Refer to **Mounting options** on **Accessories** pages

Connection Accessories

KKCN-18	4 PIN LEDmix male & female 50mm/1.97" pair
KKCN-19	4 PIN LEDmix male & female 300mm/11.81" pair
KKCN-24	4 PIN LEDmix 300mm/11.81" extension lead

* Refer to **Power feed** on **Accessories** pages

PSU/Driver

0-10V/1-10V/Dali/DMX

* Refer to **Driver/PSU Options** page for details or provide requirement and KKDC to offer the suitable option

LED ENGINE VARIANTS (LED STRIP TYPE)

Colour	Output	LED	Lumen/m	Lumen/ft	W/m	W/ft	Spec Doc	Length	Increment
Single CCT	Low	352	300	91	5.5	1.67	LiNi Glow XL 352	94.3-2011mm/3.71-79.17in	83.3mm/3.28in
	Mid	504	750	229	12.5	3.81	LiNi Glow XL 504	111-2011mm/4.37-79.17in	100mm/3.94in
	Mid	508	1040	317	17.5	5.33	LiNi Glow XL 508	82.4-2011mm/3.24-79.17in	71.4mm/2.81in
Warm Dim/Dynamic White	Low	207	530	161	11	3.35	LiNi Glow XL 207	94.3-2011mm/3.71-79.17in	83.3mm/3.28in
	Mid	208	920	311	15.6	4.75	LiNi Glow XL 208	177.7-2011mm/7.00-79.17in	166.7mm/6.56in
RGB		501	Red 90 Green 193 Blue 32 RGB 280	Red 27 Green 59 Blue 10 RGB 85	15.6	4.75	LiNi Glow XL RGB	94.3-2011mm/3.71-79.17in	83.3mm/3.28in

* Performance data: s-line, diffused Cover, 2100K + 5000K

LiNi Glow XL 208

Length Availability List

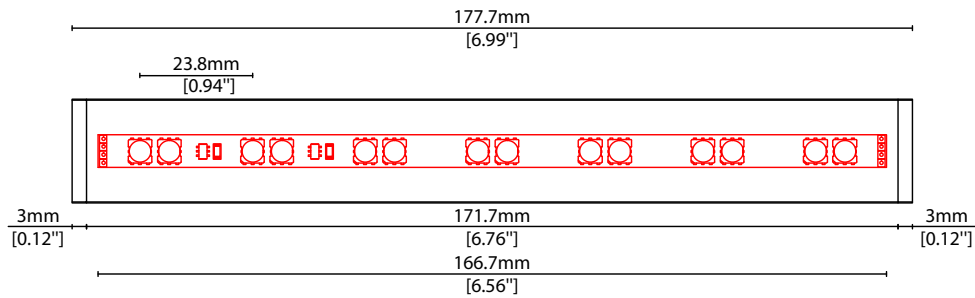


Length Code		Fixture Length ¹		LED Strip ²		End Cap Dimension ³		Wattage (W)	Output (lm)
Metric	Imperial(US)	Metric	Imperial(US)	Metric	Imperial(US)	Metric	Imperial(US)		MIX (Test Data)
m0178	i0007	178mm	6.99in	167mm	6.56in	6mm	0.24in	2.60	153
m0344	i0014	344mm	13.56in	333mm	13.12in	6mm	0.24in	5.20	305
m0511	i0020	511mm	20.12in	500mm	19.69in	6mm	0.24in	7.80	458
m0678	i0027	678mm	26.68in	667mm	26.25in	6mm	0.24in	10.40	610
m0844	i0033	844mm	33.24in	833mm	32.81in	6mm	0.24in	13.00	763
m1011	i0040	1011mm	39.80in	1000mm	39.37in	6mm	0.24in	15.60	916
m1178	i0046	1178mm	46.37in	1167mm	45.93in	6mm	0.24in	18.20	1068
m1344	i0053	1344mm	52.93in	1333mm	52.49in	6mm	0.24in	20.80	1221
m1511	i0059	1511mm	59.49in	1500mm	59.06in	6mm	0.24in	23.40	1374
m1678	i0066	1678mm	66.05in	1667mm	65.62in	6mm	0.24in	26.00	1526
m1844	i0073	1844mm	72.61in	1833mm	72.18in	6mm	0.24in	28.60	1679
m2011	i0079	2011mm	79.17in	2000mm	78.74in	6mm	0.24in	31.20	1831

¹ Actual total overall length of light fixture (LED strip + end caps + void/wire hole)

² Actual length of PCB strip

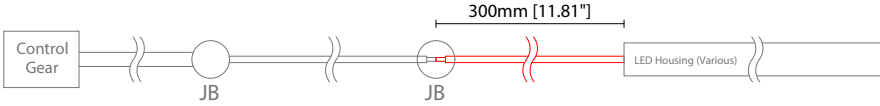
³ Actual length of 2x end caps



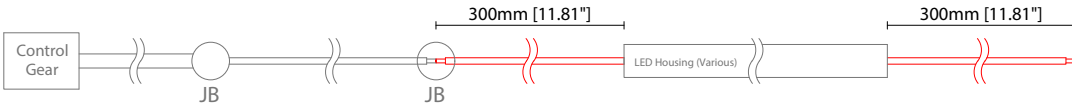
POWER FEED OPTIONS

* Options are an integral part of the fixture ordering codes. Please refer to **Code Table** pages.

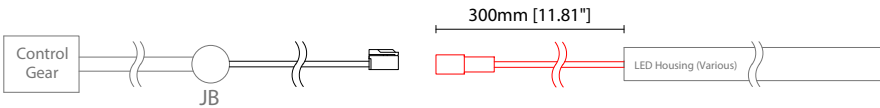
0300 S00X 300mm (11.81") Single no sheath tail



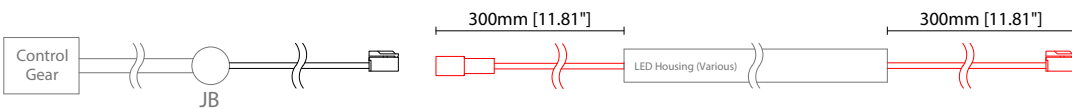
0300 D00X 300mm (11.81") Double no sheath tail



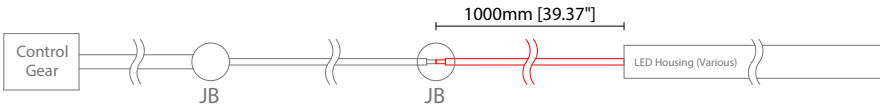
0300 S20X 300mm (11.81") Single no sheath IP20 connector



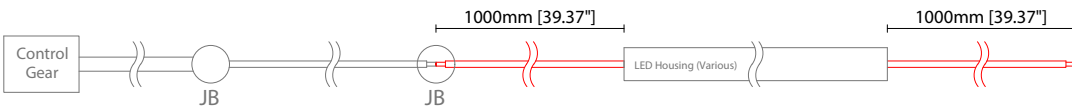
0300 D20X 300mm (11.81") Double no sheath IP20 connector



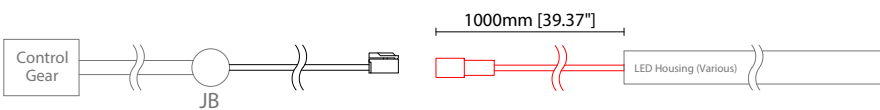
1000 S00X 1000mm (39.37") Single no sheath tail



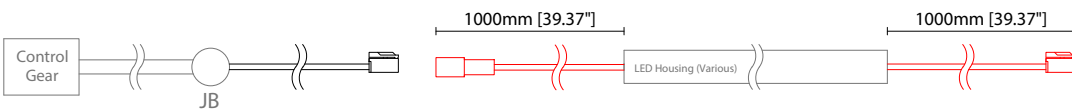
1000 D00X 1000mm (39.37") Double no sheath tail



1000 S20X 1000mm (39.37") Single no sheath IP20 connector



1000 D20X 1000mm (39.37") Double no sheath IP20 connector



Key

- Control Gear Power supply, sub-controllers & control systems
- JB Junction box / cable connection

Linear

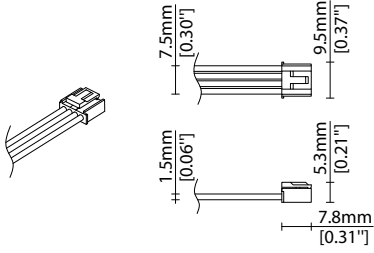
LiNi Glow XL 208

Options

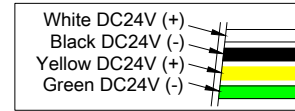
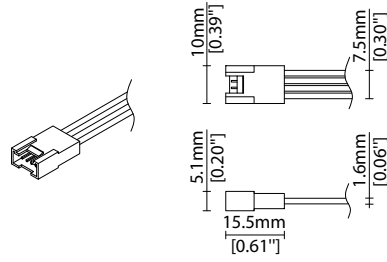


POWER FEED OPTIONS (CONTINUED)

4 Pin LEDmix Female Connector



4 Pin LEDmix Male Connector

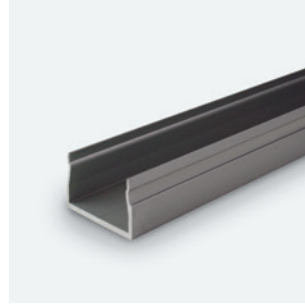
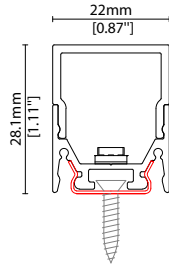


MOUNTING OPTIONS

Note: Accessories are to be ordered separately with corresponding code shown below.

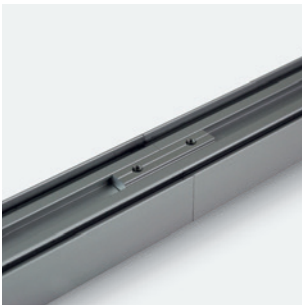
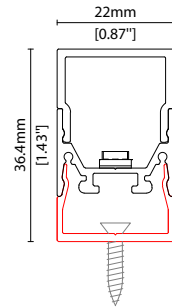


KKCP-11
 Concealed clip
 (allow 3 per metre/40in)
 S/Steel finish

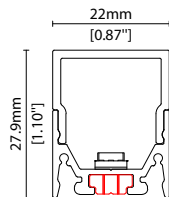


KKCR-01-1000 1000mm (39.37in)
KKCR-01-2000 2000mm (78.74in)
KKCR-01-3000 3000mm (118.11in)

Cable raceway*
 Anodised aluminium finish
 * Cut & drilled to fit on site



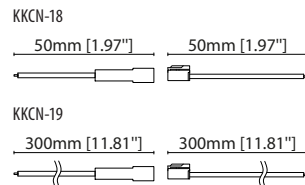
KKJT-02
 Joining bar* (allow 1 per join)
 Anodised aluminium finish
 * Mounting option required with
 Joining bar



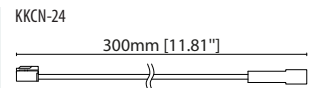
POWER FEED



KKCN-18 50mm (1.97in) pair
KKCN-19 300mm (11.81in) pair
 4 PIN LEDmix male + female
 connector set



KKCN-24
 4 PIN LEDmix 300mm (11.81in)
 extension lead



KKDC CONTROL



IP20
Black plastic housing
L164/W64/H34mm
(L6.46/W2.52/H1.34in)

KKDM-05 1-10V
visDIM dimmable sub-controller



IP20
Black plastic housing
L164/W64/H34mm
(L6.46/W2.52/H1.34in)

KKSC-03A DMX (screw terminal)
visDIM dimmable sub-controller



IP20
Black plastic housing
L164/W64/H34mm
(L6.46/W2.52/H1.34in)

KKSC-03B DMX (RJ45)
visDIM dimmable sub-controller



IP20
Plastic housing
L170/W59/H29mm
(L6.69/W2.32/H1.14in)

KKDL-02 DALI
visDIM dimmable sub-controller
(4 x 8A max @ 12-36V)



IP20
Plastic housing
L166/W53.4/H23mm
(L6.54/W2.10/H0.91in)

KKDL-03 DALI
visDIM dimmable sub-controller
(4 x 5A max @ 12-36V)

AVAILABLE PSU OPTIONS

Control Mode	PSU (Order Code)	Input Voltage AC	Output Voltage DC	Rated Output Current	Rated Power	Dim %	IP Rating
Switched	CEN-60-24	90-295V	24V	2.5A	60W	-	IP67
	HLG-60H-24	90-305V	24V	2.5A	60W	-	IP67
	HLG-100H-24	90-305V	24V	4.0A	100W	-	IP67
	HLG-150H-24	90-305V	24V	6.3A	150W	-	IP67
	HLG-240H-24	90-305V	24V	10A	240W	-	IP67
0-10V (1-10V)	PWM-40-24	90-305V	24V	1.67A	40W	100-0.15 (100-10)	IP67
	PWM-60-24	90-305V	24V	2.5A	60W	100-0.15 (100-10)	IP67
	PWM-90-24	90-305V	24V	3.67A	90W	100-0.15 (100-10)	IP67
	PWM-120-24	90-305V	24V	5.0A	120W	100-0.15 (100-10)	IP67
DALI	LIN100A1	120-277V	24V	1A per channel	100W	100-0.1	IP66/IP40
DMX RGB	LIN100A1	120-277V	24V	1.33A per channel	100W	100-0.1	IP66/IP40
DMX RGBW	LIN100A1	120-277A	24V	1A per channel	100W	100-0.1	IP66/IP40

Flicker Free Options - Combination of PSU+ sub-controller

Control Mode	PSU (Order Code)	Sub-controller (Order Code)	Input Voltage AC	Output Voltage DC	Rated Output Current	Rated Power	Dim %	IP Rating PSU/ Sub-controller
0-10V or 1-10V	CEN-60-24	KKDM-05	90-295V	24V	2.5A	60W	100-0.9	IP67/IP20
	HLG-60H-24	KKDM-05	90-295V	24V	2.5A	60W	100-0.9	IP67/IP20
	HLG-100H-24	KKDM-05	90-295V	24V	4.0A	100W	100-0.9	IP67/IP20
	HLG-150H-24	KKDM-05	90-295V	24V	6.3A	150W	100-0.9	IP67/IP20
	HLG-240H-24	KKDM-05	90-295V	24V	10.0A	240W	100-0.9	IP67/IP20
DALI	CEN-60-24	KKDL-02/03	90-295V	24V	2.5A	60W	100-0.1	IP67/IP20
	HLG-60H-24	KKDL-02/03	90-305V	24V	2.5A	60W	100-0.1	IP67/IP20
	HLG-100H-24	KKDL-02/03	90-305V	24V	4.0A	100W	100-0.1	IP67/IP20
	HLG-150H-24	KKDL-02/03	90-305V	24V	6.3A	150W	100-0.1	IP67/IP20
	HLG-240H-24	KKDL-02/03	90-305V	24V	10.0A	240W	100-0.1	IP67/IP20
DMX RGB	CEN-60-24	KKSC-03	90-295V	24V	2.5A	60W	100-0.9	IP67/IP20
	HLG-60H-24	KKSC-03	90-305V	24V	2.5A	60W	100-0.9	IP67/IP20
	HLG-100H-24	KKSC-03	90-305V	24V	4A	100W	100-0.9	IP67/IP20
	HLG-150H-24	KKSC-03	90-305V	24V	6.3A	150W	100-0.9	IP67/IP20
	HLG-240H-24	KKSC-03	90-305V	24V	10.0A	240W	100-0.9	IP67/IP20

¹ The items shown above cover the most frequently used specification but does not exhaust the possible options

² PSU and/or driver can be chosen from the table, or KKDC may recommend the best option upon receipt of the controls requirement and installation environment

³ Electrical shop drawing will include detailed information of PSU and relevant control drivers

⁴ Cut sheets are available on the controls section of www.kkdc.lighting or upon request

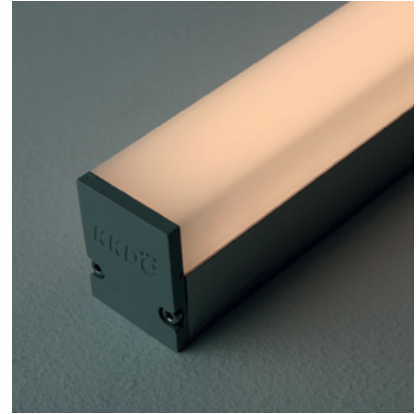
Linear

LiNi Glow XL 352

Fixture Guide

KKDÖ

Indoor | Surface | Low output up to 300lm/m (91lm/ft)

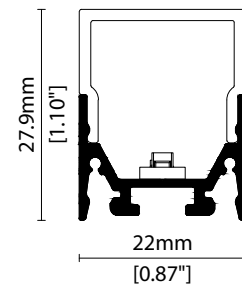


Key applications

- ✓ Architectural detail
- ✓ Ceiling
- ✓ Cove lighting
- ✓ Indirect lighting
- ✓ Interior
- ✓ Mirror back lighting
- ✓ Orientation lighting
- ✓ Shelving display
- ✓ Under bench
- ✓ Under cabinet

Key features

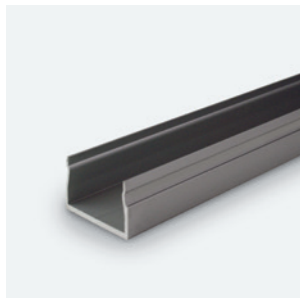
- ✓ Custom lengths
- ✓ Diffusion: Homogenous
- ✓ Direct view
- ✓ Extensive CCT range
- ✓ Form factor: Medium
- ✓ IP40
- ✓ Output low



MOUNTING METHODS



KKCP-11 Concealed clip



KKCR-01-1000 Cable raceway (1000mm)
KKCR-02-2000 Cable raceway (2000mm)
KKCR-03-3000 Cable raceway (3000mm)



KKJT-02 Joining bar

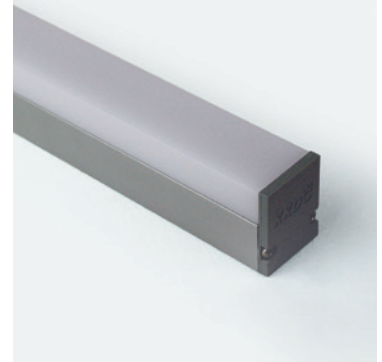
Linear

LiNi Glow XL 352

Specification sheet



Dimension	H28/W22/L94.3-2011mm (H1.1/W0.87/L3.71-79.17in)	
PCB increment	83.3mm increment/2000mm max (3.28in increment/78.74in max)	
LED pitch	13.9mm - 72LED/m (0.55in - 22LED/ft)	
Chip	s/e-line	Toyoda Gosei
	k-line	Samsung
Beam angle	156° (Diffused Cover)	
Colours	s/e-line	2100K/2500K/2700K/3000K/3500K/4000K/5000K
	s-line	Single colours: Red/Green/Blue/Orange/Amber
	k-line	1900K/2100K/2500K/2700K/3000K/3500K/4000K/5000K
Bin/Step	s-line	2-step MacAdam ellipse
	e/k-line	3-step MacAdam ellipse
CRI	≥ 90	
Lifetime	50,000 hours @ 25°C (50,000 hours @ 77°F)	
Operating temp	T _a = -25 to 60°C (T _c max = 67°C) T _a = -13 to 140°F (T _c max = 152.6°F)	
IP rating	IP40	
Finish	Silver anodised	
Cover/lens	Diffused	
Mounting	Surface mounting via concealed clips or cable raceway	
Power feed	Hardwire tails or male/female connectors	
Control	0-10V/1-10V/DMX/DALI	



LED Grading Key

Exclusive Grade

s-line*
2-step CCT range

*KKDC tuned
CCT range

e-line*
3-step CCT range

Base Grade

k-line
3-step commercial range
Energy Star CCTs

PERFORMANCE DATA @ 3000K

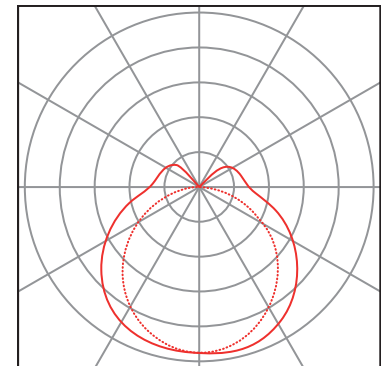
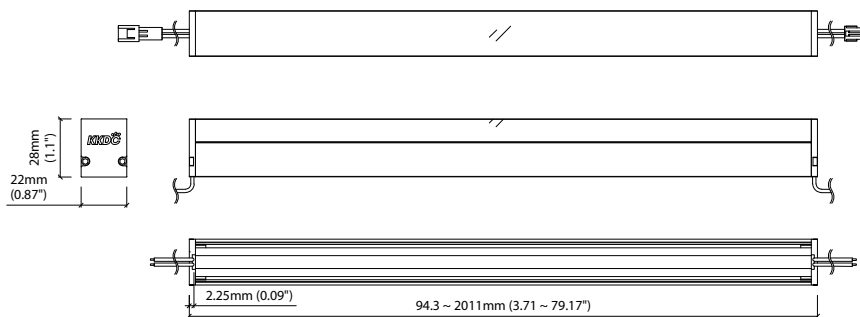
Power consumption	Supply voltage	Supply current
5.5W/m (1.67W/ft)	24V DC	0.23A/m (0.07A/ft)

Colour Rendering Index (CRI)

	R1	R2	R3	R4	R5	R6	R7	R8	R9	R10	R11	R12	R13	R14
k-line	94	97	98	93	93	96	92	83	60	93	94	82	95	99

Diffused Cover

					CRI	R9	Rf	Rg
s/e-line	300lm/m (91lm/ft)	55.1lm/W			93	63	-	-
k-line	300lm/m (91lm/ft)	54lm/W			92	60	-	-



Diffused Cover
— C0 / C180 cd / 1000 lm - - - C90 / C270

Data derived from independent UKAS/IESNA LM-79-08 accredited testing of production samples.

See KKDC website for product document updates.

www.kkdc.lighting

LiNiGlowXL352S-02.03EN-20200116

LiNi Glow XL 352

Code Table



FIXTURE

Model	Finish	Cover	Grade*	LED	Colour (CCT)	Length Availability**	IP	Cable Length	Power Feed***	Input		
LiNi Glow XL	GX Silver Anodised	SA Diffused U cover	0	s	352	1900K ¹	m 94.3-2011mm 83.3mm increments i 3.71-79.17in 3.28in increments (Specify length code OR total run length)	IP40 40	300mm/11.81" 0300 1000mm/39.37" 1000	Single no sheath tail	S00X D00X S20X D20X	DC 24V g
					2100K	21				Double no sheath tail		
					2500K	25				Single no sheath IP20 connector		
					2700K	27				Double no sheath IP20 connector		
					3000K	30						
					3500K	35						
					4000K	40						
					5000K	50						
					RED	RED				s-only		
					GREEN	GRN						
					BLUE	BLU						
					ORANGE	ORN						
					AMBER	AMB						

¹ 1900K is only available in k-line

* Refer to **LED Grading Key** on **Specification sheet** page

** Refer to **Length Availability List** or enter total run length instead of length code

*** Refer to **Power Feed Options** on **Options** pages

Code Example:

GX	-	SA	-	0	-	s	-	352	-	35	-	m	511	-	40	-	0300	-	D00X	-	g
LiNi Glow XL		Silver Anodised		Diffused U cover		s		352		3500K		510.8mm		IP40		300mm/11.81"		Double no sheath tail		DC 24V	

ACCESSORIES

Mounting Accessories

KKCP-11	Concealed Clip
KKCR-01-1000	1000mm/39.37" Cable Raceway
KKCR-01-2000	2000mm/78.74" Cable Raceway
KKCR-01-3000	3000mm/118.11" Cable Raceway
KKJT-02	Joining Bar

Connection Accessories

KKCN-01	2 PIN male & female 50mm/1.97" pair
KKCN-03	2 PIN male & female 300mm/11.81" pair
KKCN-06	2 PIN 300mm/11.81" extension lead

* Refer to **Power feed** on **Accessories** pages

PSU/Driver

0-10V/1-10V/Dali/DMX

* Refer to **Driver/PSU Options** page for details or provide requirement and KKDC to offer the suitable option

* Refer to **Mounting options** on **Accessories** pages

LED ENGINE VARIANTS (LED STRIP TYPE)

Colour	Output	LED	Lumen/m	Lumen/ft	W/m	W/ft	Spec Doc	Length	Increment
Single CCT	Low	352	300	91	5.5	1.67	LiNi Glow XL 352	94.3-2011mm/3.71-79.17in	83.3mm/3.28in
	Mid	504	750	229	12.5	3.81	LiNi Glow XL 504	111-2011mm/4.37-79.17in	100mm/3.94in
	Mid	508	1040	317	17.5	5.33	LiNi Glow XL 508	82.4-2011mm/3.24-79.17in	71.4mm/2.81in
Warm Dim/Dynamic White	Low	207	530	161	11	3.35	LiNi Glow XL 207	94.3-2011mm/3.71-79.17in	83.3mm/3.28in
	Mid	208	920	311	15.6	4.75	LiNi Glow XL 208	177.7-2011mm/7.00-79.17in	166.7mm/6.56in
RGB		501	Red 90 Green 193 Blue 32 RGB 280	Red 27 Green 59 Blue 10 RGB 85	15.6	4.75	LiNi Glow XL RGB	94.3-2011mm/3.71-79.17in	83.3mm/3.28in

* Performance data: s/e-line, diffused Cover, 3000K

LiNi Glow XL 352

Length Availability List

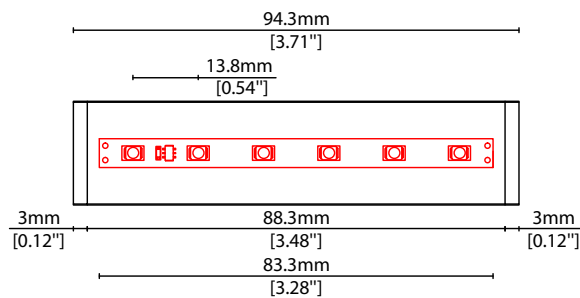


Length Code		Fixture Length ¹		LED Strip ²		End Cap Dimension ³		Wattage (W)	Output (lm)	
Metric	Imperial(US)	Metric	Imperial(US)	Metric	Imperial(US)	Metric	Imperial(US)		3000K (Test Data)	Range Data
m0094	i0004	94mm	3.71in	83mm	3.28in	6mm	0.24in	0.46	25	16-26
m0178	i0007	178mm	7.00in	167mm	6.56in	6mm	0.24in	0.92	49	33-51
m0261	i0010	261mm	10.28in	250mm	9.84in	6mm	0.24in	1.37	74	49-77
m0344	i0014	344mm	13.56in	333mm	13.12in	6mm	0.24in	1.83	99	66-103
m0428	i0017	428mm	16.84in	417mm	16.41in	6mm	0.24in	2.29	124	82-129
m0511	i0020	511mm	20.12in	500mm	19.69in	6mm	0.24in	2.75	148	99-154
m0594	i0023	594mm	23.40in	583mm	22.97in	6mm	0.24in	3.21	173	115-180
m0678	i0027	678mm	26.68in	667mm	26.25in	6mm	0.24in	3.67	198	132-206
m0761	i0030	761mm	29.96in	750mm	29.53in	6mm	0.24in	4.12	223	148-232
m0844	i0033	844mm	33.24in	833mm	32.81in	6mm	0.24in	4.58	247	165-257
m0928	i0037	928mm	36.53in	917mm	36.09in	6mm	0.24in	5.04	272	181-283
m1011	i0040	1011mm	39.81in	1000mm	39.37in	6mm	0.24in	5.50	297	198-309
m1094	i0043	1094mm	43.09in	1083mm	42.65in	6mm	0.24in	5.96	322	214-335
m1178	i0046	1178mm	46.37in	1167mm	45.94in	6mm	0.24in	6.42	346	230-360
m1261	i0050	1261mm	49.65in	1250mm	49.22in	6mm	0.24in	6.87	371	247-386
m1344	i0053	1344mm	52.93in	1333mm	52.50in	6mm	0.24in	7.33	396	263-412
m1428	i0056	1428mm	56.21in	1417mm	55.78in	6mm	0.24in	7.79	421	280-438
m1511	i0059	1511mm	59.49in	1500mm	59.06in	6mm	0.24in	8.25	445	296-463
m1594	i0063	1594mm	62.77in	1583mm	62.34in	6mm	0.24in	8.71	470	313-489
m1678	i0066	1678mm	66.06in	1667mm	65.62in	6mm	0.24in	9.17	495	329-515
m1761	i0069	1761mm	69.34in	1750mm	68.90in	6mm	0.24in	9.62	520	346-541
m1844	i0073	1844mm	72.62in	1833mm	72.18in	6mm	0.24in	10.08	544	362-566
m1928	i0076	1928mm	75.90in	1917mm	75.47in	6mm	0.24in	10.54	569	379-592
m2011	i0079	2011mm	79.18in	2000mm	78.75in	6mm	0.24in	11.00	594	395-618

¹ Actual total overall length of light fixture (LED strip + end caps + void/wire hole)

² Actual length of PCB strip

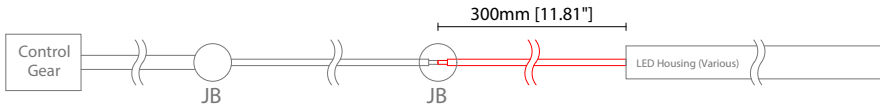
³ Actual length of 2x end caps



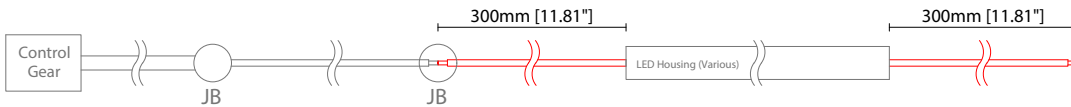
POWER FEED OPTIONS

* Options are an integral part of the fixture ordering codes. Please refer to **Code Table** pages.

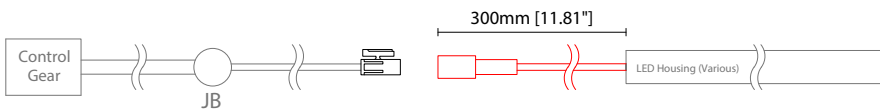
0300 S00X 300mm (11.81") Single no sheath tail



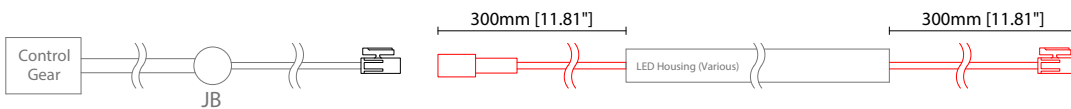
0300 D00X 300mm (11.81") Double no sheath tail



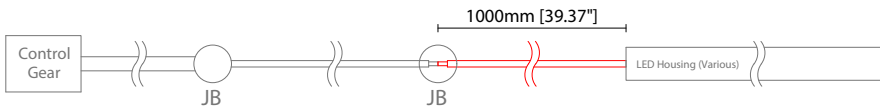
0300 S20X 300mm (11.81") Single no sheath IP20 connector



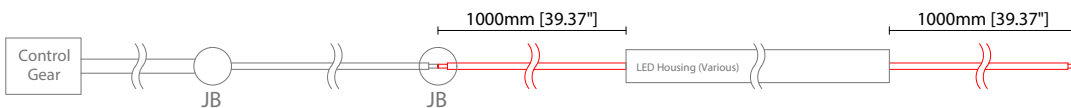
0300 D20X 300mm (11.81") Double no sheath IP20 connector



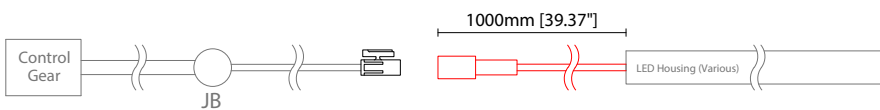
1000 S00X 1000mm (39.37") Single no sheath tail



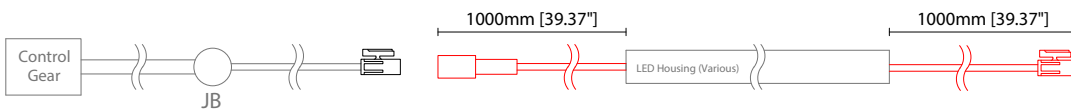
1000 D00X 1000mm (39.37") Double no sheath tail



1000 S20X 1000mm (39.37") Single no sheath IP20 connector



1000 D20X 1000mm (39.37") Double no sheath IP20 connector



Key

Control Gear Power supply, sub-controllers & control systems

JB Junction box / cable connection

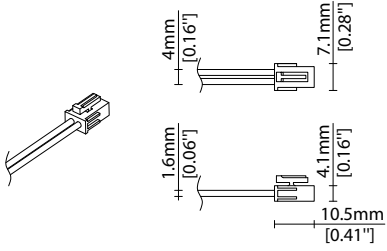
Linear

LiNi Glow XL 352 Options

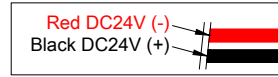
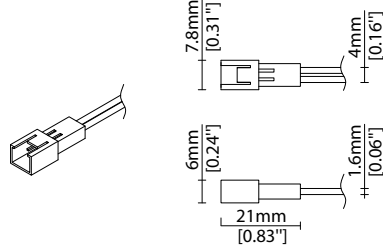


POWER FEED OPTIONS (CONTINUED)

2 Pin Female Connector



2 Pin Male Connector

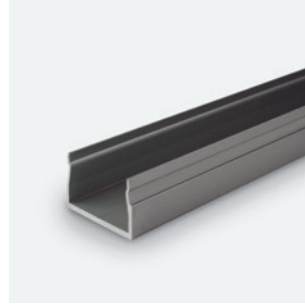
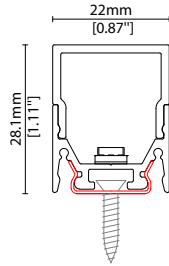


MOUNTING OPTIONS

Note: Accessories are to be ordered separately with corresponding code shown below.

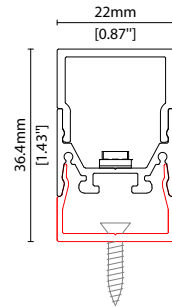


KKCP-11
 Concealed clip
 (allow 3 per metre/40in)
 S/Steel finish

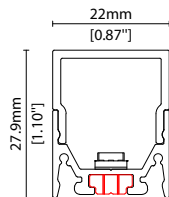


KKCR-01-1000 1000mm (39.37in)
KKCR-01-2000 2000mm (78.74in)
KKCR-01-3000 3000mm (118.11in)

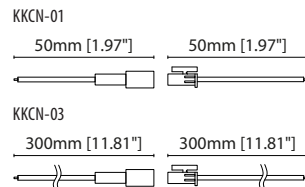
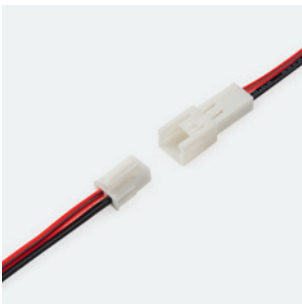
Cable raceway*
 Anodised aluminium finish
 * Cut & drilled to fit on site



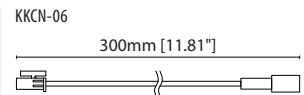
KKJT-02
 Joining bar* (allow 1 per join)
 Anodised aluminium finish
 * Mounting option required with
 Joining bar



POWER FEED



KKCN-01 50mm (1.97in) pair
KKCN-03 300mm (11.81in) pair
 2 PIN male + female connector set



KKCN-06
 2 PIN 300mm (11.81in) extension
 lead

KKDC CONTROL



IP20
Black plastic housing
L164/W64/H34mm
(L6.46/W2.52/H1.34in)

KKDM-05 1-10V
visDIM dimmable sub-controller



IP20
Black plastic housing
L164/W64/H34mm
(L6.46/W2.52/H1.34in)

KKSC-03A DMX (screw terminal)
visDIM dimmable sub-controller



IP20
Black plastic housing
L164/W64/H34mm
(L6.46/W2.52/H1.34in)

KKSC-03B DMX (RJ45)
visDIM dimmable sub-controller



IP20
Plastic housing
L170/W59/H29mm
(L6.69/W2.32/H1.14in)

KKDL-02 DALI
visDIM dimmable sub-controller
(4 x 8A max @ 12-36V)



IP20
Plastic housing
L166/W53.4/H23mm
(L6.54/W2.10/H0.91in)

KKDL-03 DALI
visDIM dimmable sub-controller
(4 x 5A max @ 12-36V)

AVAILABLE PSU OPTIONS

Control Mode	PSU (Order Code)	Input Voltage AC	Output Voltage DC	Rated Output Current	Rated Power	Dim %	IP Rating
Switched	CEN-60-24	90-295V	24V	2.5A	60W	-	IP67
	HLG-60H-24	90-305V	24V	2.5A	60W	-	IP67
	HLG-100H-24	90-305V	24V	4.0A	100W	-	IP67
	HLG-150H-24	90-305V	24V	6.3A	150W	-	IP67
	HLG-240H-24	90-305V	24V	10A	240W	-	IP67
0-10V (1-10V)	PWM-40-24	90-305V	24V	1.67A	40W	100-0.15 (100-10)	IP67
	PWM-60-24	90-305V	24V	2.5A	60W	100-0.15 (100-10)	IP67
	PWM-90-24	90-305V	24V	3.67A	90W	100-0.15 (100-10)	IP67
	PWM-120-24	90-305V	24V	5.0A	120W	100-0.15 (100-10)	IP67
DALI	LIN100A1	120-277V	24V	1A per channel	100W	100-0.1	IP66/IP40
DMX RGB	LIN100A1	120-277V	24V	1.33A per channel	100W	100-0.1	IP66/IP40
DMX RGBW	LIN100A1	120-277A	24V	1A per channel	100W	100-0.1	IP66/IP40

Flicker Free Options - Combination of PSU+ sub-controller

Control Mode	PSU (Order Code)	Sub-controller (Order Code)	Input Voltage AC	Output Voltage DC	Rated Output Current	Rated Power	Dim %	IP Rating PSU/ Sub-controller
0-10V or 1-10V	CEN-60-24	KKDM-05	90-295V	24V	2.5A	60W	100-0.9	IP67/IP20
	HLG-60H-24	KKDM-05	90-295V	24V	2.5A	60W	100-0.9	IP67/IP20
	HLG-100H-24	KKDM-05	90-295V	24V	4.0A	100W	100-0.9	IP67/IP20
	HLG-150H-24	KKDM-05	90-295V	24V	6.3A	150W	100-0.9	IP67/IP20
	HLG-240H-24	KKDM-05	90-295V	24V	10.0A	240W	100-0.9	IP67/IP20
DALI	CEN-60-24	KKDL-02/03	90-295V	24V	2.5A	60W	100-0.1	IP67/IP20
	HLG-60H-24	KKDL-02/03	90-305V	24V	2.5A	60W	100-0.1	IP67/IP20
	HLG-100H-24	KKDL-02/03	90-305V	24V	4.0A	100W	100-0.1	IP67/IP20
	HLG-150H-24	KKDL-02/03	90-305V	24V	6.3A	150W	100-0.1	IP67/IP20
	HLG-240H-24	KKDL-02/03	90-305V	24V	10.0A	240W	100-0.1	IP67/IP20
DMX RGB	CEN-60-24	KKSC-03	90-295V	24V	2.5A	60W	100-0.9	IP67/IP20
	HLG-60H-24	KKSC-03	90-305V	24V	2.5A	60W	100-0.9	IP67/IP20
	HLG-100H-24	KKSC-03	90-305V	24V	4A	100W	100-0.9	IP67/IP20
	HLG-150H-24	KKSC-03	90-305V	24V	6.3A	150W	100-0.9	IP67/IP20
	HLG-240H-24	KKSC-03	90-305V	24V	10.0A	240W	100-0.9	IP67/IP20

¹ The items shown above cover the most frequently used specification but does not exhaust the possible options

² PSU and/or driver can be chosen from the table, or KKDC may recommend the best option upon receipt of the controls requirement and installation environment

³ Electrical shop drawing will include detailed information of PSU and relevant control drivers

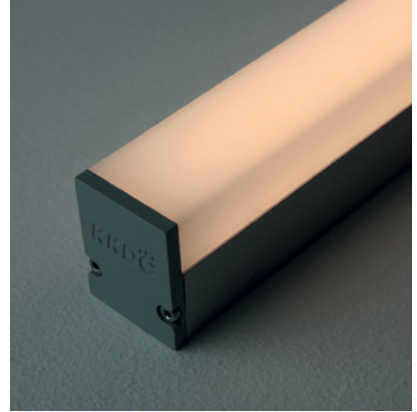
⁴ Cut sheets are available on the controls section of www.kkdc.lighting or upon request

Linear

LiNi Glow XL 504 Fixture Guide

KKDÖ

Indoor | Surface | Mid output up to 750lm/m (229lm/ft)

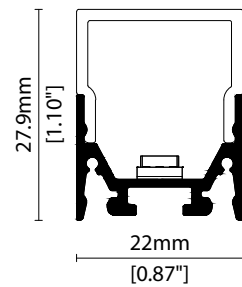


Key applications

- ✓ Architectural detail
- ✓ Ceiling
- ✓ Cove lighting
- ✓ Indirect lighting
- ✓ Interior
- ✓ Mirror back lighting
- ✓ Orientation lighting
- ✓ Shelving display
- ✓ Under bench
- ✓ Under cabinet

Key features

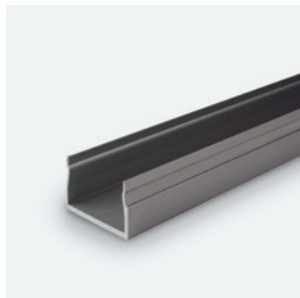
- ✓ Custom lengths
- ✓ Diffusion: Homogenous
- ✓ Direct view
- ✓ Extensive CCT range
- ✓ Form factor: Medium
- ✓ IP40
- ✓ Output mid



MOUNTING METHODS



KKCP-11 Concealed clip



KKCR-01-1000 Cable raceway (1000mm)
KKCR-02-2000 Cable raceway (2000mm)
KKCR-03-3000 Cable raceway (3000mm)



KKJT-02 Joining bar

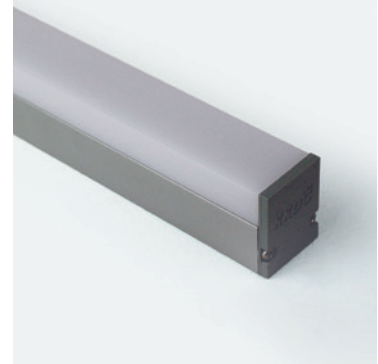
Linear

LiNi Glow XL 504

Specification sheet



Dimension	H28/W22/L111-2011mm (H1.1/W0.87/L4.37-79.17in)	
PCB increment	100mm increment/2000mm max (3.94in increment/78.74in max)	
LED pitch	16.7mm - 60LED/m (0.66in - 18LED/ft)	
Chip	s/e-line	Toyoda Gosei
	k-line	Samsung
Beam angle	156° (Diffused Cover)	
Colours	n-line	2700K/3000K
	s/e-line	2100K/2300K/2500K/2700K/3000K/3200K/3500K/4000K/5000K
	s-line	Single colours: Red/Green/Blue/Orange/Amber
	k-line	1900K/2100K/2500K/2700K/3000K/3500K/4000K/5000K
Bin/Step	s-line	2-step MacAdam ellipse
	e/k-line	3-step MacAdam ellipse
CRI	≥ 90	
Lifetime	50,000 hours @ 25°C (50,000 hours @ 77°F)	
Operating temp	T _a = -25 to 60°C (T _c max = 72°C) T _a = -13 to 140°F (T _c max = 161.6°F)	
IP rating	IP40	
Finish	Silver anodised	
Cover/lens	Diffused	
Mounting	Surface mounting via concealed clips or cable raceway	
Power feed	Hardwire tails or male/female connectors	
Control	0-10V/1-10V/DMX/DALI	



LED Grading Key

Exclusive Grade

n-line*	Full visible spectrum NO UV or IR 380nm-780nm 3-step CCT range	*KKDC tuned CCT range
s-line*	2-step CCT range	
e-line*	3-step CCT range	

Base Grade

k-line	3-step commercial range Energy Star CCTs
---------------	---

PERFORMANCE DATA @ 3000K

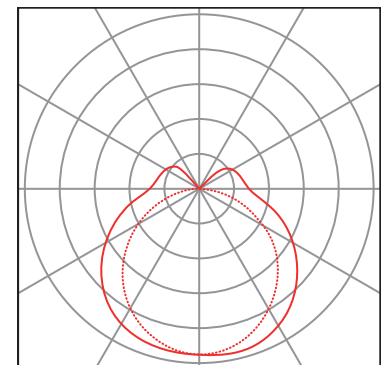
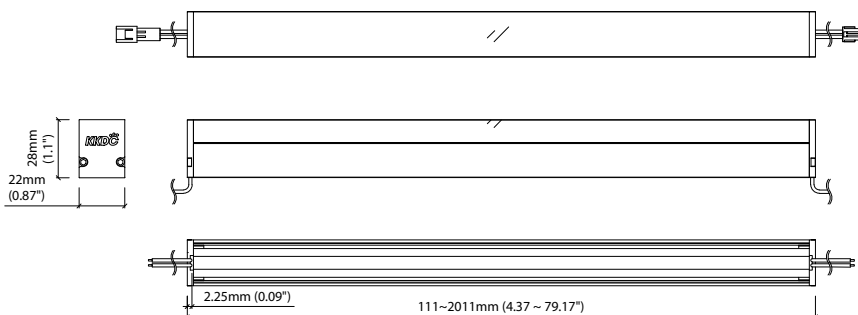
Power consumption	Supply voltage	Supply current
12.5W/m (3.81W/ft)	24V DC	0.52A/m (0.16A/ft)

Colour Rendering Index (CRI)

	R1	R2	R3	R4	R5	R6	R7	R8	R9	R10	R11	R12	R13	R14
n-line	99	99	98	98	99	97	94	90	79	98	97	92	99	98
k-line	94	97	98	93	93	96	92	83	60	93	94	82	95	99

Diffused Cover

		CRI	R9	Rf	Rg
n-line	500lm/m (153lm/ft) 40.3lm/W				
s/e-line	750lm/m (229lm/ft) 60lm/W	92	50	-	-
k-line	640lm/m (195lm/ft) 51.5lm/W	92	60	-	-



Data derived from independent UKAS/IESNA LM-79-08 accredited testing of production samples.

Linear

LiNi Glow XL 504

Code Table



FIXTURE

Model	Finish	Cover	Grade*	LED	Colour (CCT)	Length Availability**	IP	Cable Length	Power Feed***	Input	
LiNi Glow XL	GX Silver Anodised	SA Diffused U cover	0	n ² n	504	1900K ¹ 19	m 111-2011mm 100mm increments i 4.37-79.17in 3.94in increments (Specify length code OR total run length)	IP40 40	300mm/11.81" 0300 1000mm/39.37" 1000	Single no sheath tail S00X Double no sheath tail D00X Single no sheath IP20 connector S20X Double no sheath IP20 connector D20X	DC 24V g
					2100K 21						
					2300K ¹ 23						
					2500K 25						
					2700K 27						
					3000K 30						
					3200K ¹ 32						
					3500K 35						
					4000K 40						
					5000K 50						
					RED RED s-only						
					GREEN GRN						
					BLUE BLU						
					ORANGE ORN						
AMBER AMB											

¹ 1900K is only available in k-line, 2300K & 3200K are only available in s/e-line ² n-line: 2700K/3000K

* Refer to **LED Grading Key** on **Specification sheet** page ** Refer to **Length Availability List** or enter total run length instead of length code *** Refer to **Power Feed Options** on **Options** pages

Code Example:

GX	-	SA	-	0	-	s	-	504	-	35	-	m	511	-	40	-	0300	-	D00X	-	g
LiNi Glow XL		Silver Anodised		Diffused U cover		s		504		3500K		m	511mm		IP40		300mm/11.81"		Double no sheath tail		DC 24V

ACCESSORIES

Mounting Accessories

KKCP-11	Concealed Clip
KKCR-01-1000	1000mm/39.37" Cable Raceway
KKCR-01-2000	2000mm/78.74" Cable Raceway
KKCR-01-3000	3000mm/118.11" Cable Raceway
KKJT-02	Joining Bar

* Refer to **Mounting options** on **Accessories** pages

Connection Accessories

KKCN-01	2 PIN male & female 50mm/1.97" pair
KKCN-03	2 PIN male & female 300mm/11.81" pair
KKCN-06	2 PIN 300mm/11.81" extension lead

* Refer to **Power feed** on **Accessories** pages

PSU/Driver

0-10V/1-10V/Dali/DMX

* Refer to **Driver/PSU Options** page for details or provide requirement and KKDC to offer the suitable option

LED ENGINE VARIANTS (LED STRIP TYPE)

Colour	Output	LED	Lumen/m	Lumen/ft	W/m	W/ft	Spec Doc	Length	Increment
Single CCT	Low	352	300	91	5.5	1.67	LiNi Glow XL 352	94.3-2011mm/3.71-79.17in	83.3mm/3.28in
	Mid	504	750	229	12.5	3.81	LiNi Glow XL 504	111-2011mm/4.37-79.17in	100mm/3.94in
Warm Dim/Dynamic White	Mid	508	1040	317	17.5	5.33	LiNi Glow XL 508	82.4-2011mm/3.24-79.17in	71.4mm/2.81in
	Low	207	530	161	11	3.35	LiNi Glow XL 207	94.3-2011mm/3.71-79.17in	83.3mm/3.28in
	Mid	208	920	311	15.6	4.75	LiNi Glow XL 208	177.7-2011mm/7.00-79.17in	166.7mm/6.56in
RGB		501	Red 90 Green 193 Blue 32 RGB 280	Red 27 Green 59 Blue 10 RGB 85	15.6	4.75	LiNi Glow XL RGB	94.3-2011mm/3.71-79.17in	83.3mm/3.28in

* Performance data: s/e-line, diffused Cover, 3000K

LiNi Glow XL 504

Length Availability List

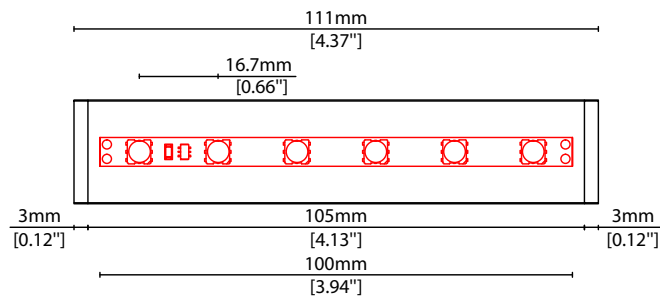


Length Code		Fixture Length ¹		LED Strip ²		End Cap Dimension ³		Wattage (W)	Output (lm)	
Metric	Imperial(US)	Metric	Imperial(US)	Metric	Imperial(US)	Metric	Imperial(US)		3000K (Test Data)	Range Data
m0111	i0004	111mm	4.37in	100mm	3.94in	6mm	0.24in	1.25	62	52-78
m0211	i0008	211mm	8.31in	200mm	7.87in	6mm	0.24in	2.50	124	103-156
m0311	i0012	311mm	12.24in	300mm	11.81in	6mm	0.24in	3.75	186	155-234
m0411	i0016	411mm	16.18in	400mm	15.75in	6mm	0.24in	5.00	248	206-312
m0511	i0020	511mm	20.12in	500mm	19.69in	6mm	0.24in	6.25	309	258-390
m0611	i0024	611mm	24.06in	600mm	23.62in	6mm	0.24in	7.50	371	309-468
m0711	i0028	711mm	27.99in	700mm	27.56in	6mm	0.24in	8.75	433	361-546
m0811	i0032	811mm	31.93in	800mm	31.50in	6mm	0.24in	10.00	495	412-624
m0911	i0036	911mm	35.87in	900mm	35.43in	6mm	0.24in	11.25	557	464-702
m1011	i0040	1011mm	39.80in	1000mm	39.37in	6mm	0.24in	12.50	619	515-780
m1111	i0044	1111mm	43.74in	1100mm	43.31in	6mm	0.24in	13.75	681	567-858
m1211	i0048	1211mm	47.68in	1200mm	47.24in	6mm	0.24in	15.00	743	618-936
m1311	i0052	1311mm	51.61in	1300mm	51.18in	6mm	0.24in	16.25	804	670-1014
m1411	i0056	1411mm	55.55in	1400mm	55.12in	6mm	0.24in	17.50	866	721-1092
m1511	i0059	1511mm	59.49in	1500mm	59.06in	6mm	0.24in	18.75	928	773-1170
m1611	i0063	1611mm	63.43in	1600mm	62.99in	6mm	0.24in	20.00	990	824-1248
m1711	i0067	1711mm	67.36in	1700mm	66.93in	6mm	0.24in	21.25	1052	876-1326
m1811	i0071	1811mm	71.30in	1800mm	70.87in	6mm	0.24in	22.50	1114	927-1404
m1911	i0075	1911mm	75.24in	1900mm	74.80in	6mm	0.24in	23.75	1176	979-1482
m2011	i0079	2011mm	79.17in	2000mm	78.74in	6mm	0.24in	25.00	1238	1030-1560

¹ Actual total overall length of light fixture (LED strip + end caps + void/wire hole)

² Actual length of PCB strip

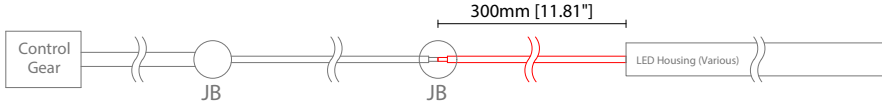
³ Actual length of 2x end caps



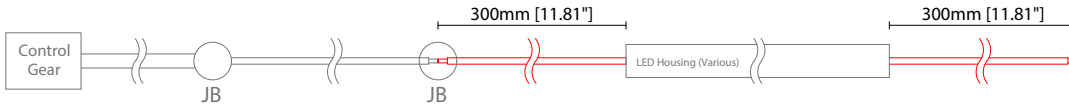
POWER FEED OPTIONS

* Options are an integral part of the fixture ordering codes. Please refer to **Code Table** pages.

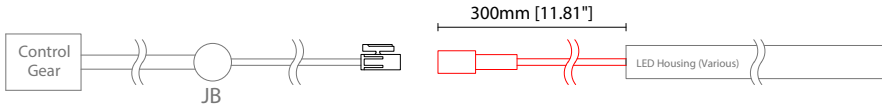
0300 S00X 300mm (11.81") Single no sheath tail



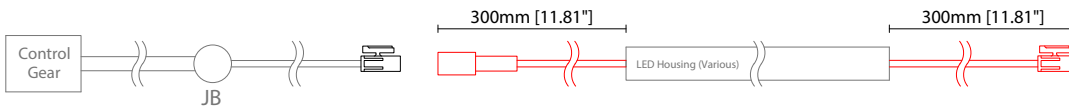
0300 D00X 300mm (11.81") Double no sheath tail



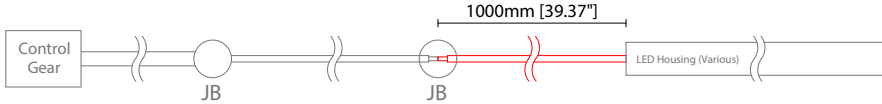
0300 S20X 300mm (11.81") Single no sheath IP20 connector



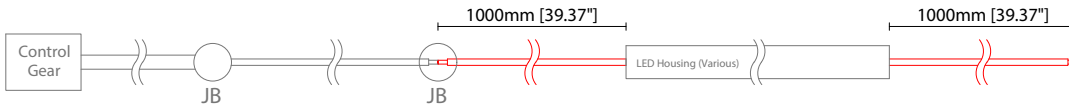
0300 D20X 300mm (11.81") Double no sheath IP20 connector



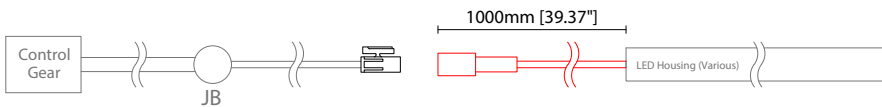
1000 S00X 1000mm (39.37") Single no sheath tail



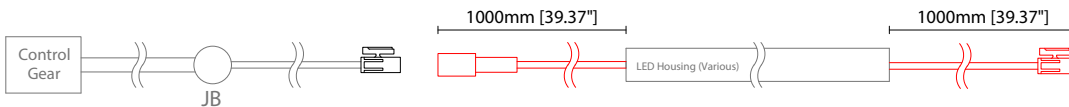
1000 D00X 1000mm (39.37") Double no sheath tail



1000 S20X 1000mm (39.37") Single no sheath IP20 connector



1000 D20X 1000mm (39.37") Double no sheath IP20 connector



Key

Control Gear Power supply, sub-controllers & control systems

JB Junction box / cable connection

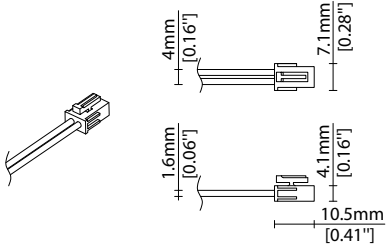
Linear

LiNi Glow XL 504 Options

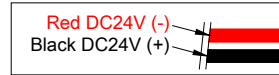
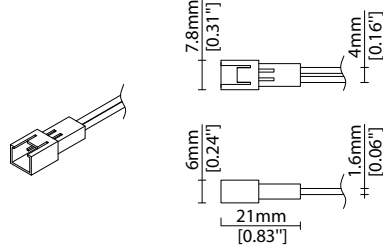


POWER FEED OPTIONS (CONTINUED)

2 Pin Female Connector



2 Pin Male Connector

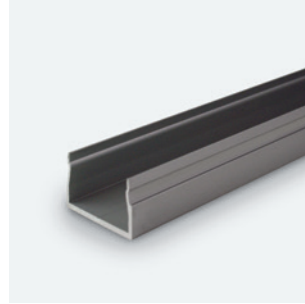
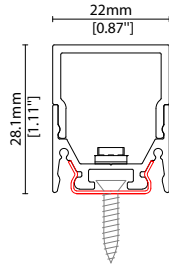


MOUNTING OPTIONS

Note: Accessories are to be ordered separately with corresponding code shown below.

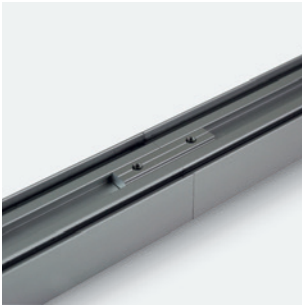
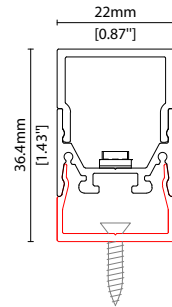


KKCP-11
 Concealed clip
 (allow 3 per metre/40in)
 S/Steel finish

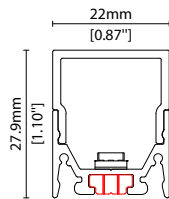


KKCR-01-1000 1000mm (39.37in)
KKCR-01-2000 2000mm (78.74in)
KKCR-01-3000 3000mm (118.11in)

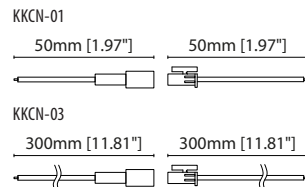
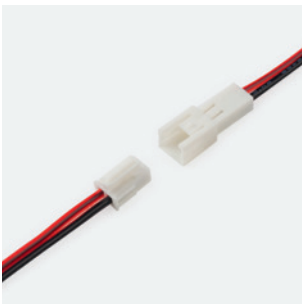
Cable raceway*
 Anodised aluminium finish
 * Cut & drilled to fit on site



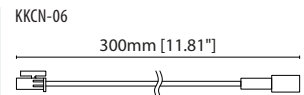
KKJT-02
 Joining bar* (allow 1 per join)
 Anodised aluminium finish
 * Mounting option required with
 Joining bar



POWER FEED



KKCN-01 50mm (1.97in) pair
KKCN-03 300mm (11.81in) pair
 2 PIN male + female connector set



KKCN-06
 2 PIN 300mm (11.81in) extension
 lead

KKDC CONTROL



IP20
Black plastic housing
L164/W64/H34mm
(L6.46/W2.52/H1.34in)

KKDM-05 1-10V
visDIM dimmable sub-controller



IP20
Black plastic housing
L164/W64/H34mm
(L6.46/W2.52/H1.34in)

KKSC-03A DMX (screw terminal)
visDIM dimmable sub-controller



IP20
Black plastic housing
L164/W64/H34mm
(L6.46/W2.52/H1.34in)

KKSC-03B DMX (RJ45)
visDIM dimmable sub-controller



IP20
Plastic housing
L170/W59/H29mm
(L6.69/W2.32/H1.14in)

KKDL-02 DALI
visDIM dimmable sub-controller
(4 x 8A max @ 12-36V)



IP20
Plastic housing
L166/W53.4/H23mm
(L6.54/W2.10/H0.91in)

KKDL-03 DALI
visDIM dimmable sub-controller
(4 x 5A max @ 12-36V)

AVAILABLE PSU OPTIONS

Control Mode	PSU (Order Code)	Input Voltage AC	Output Voltage DC	Rated Output Current	Rated Power	Dim %	IP Rating
Switched	CEN-60-24	90-295V	24V	2.5A	60W	-	IP67
	HLG-60H-24	90-305V	24V	2.5A	60W	-	IP67
	HLG-100H-24	90-305V	24V	4.0A	100W	-	IP67
	HLG-150H-24	90-305V	24V	6.3A	150W	-	IP67
	HLG-240H-24	90-305V	24V	10A	240W	-	IP67
0-10V (1-10V)	PWM-40-24	90-305V	24V	1.67A	40W	100-0.15 (100-10)	IP67
	PWM-60-24	90-305V	24V	2.5A	60W	100-0.15 (100-10)	IP67
	PWM-90-24	90-305V	24V	3.67A	90W	100-0.15 (100-10)	IP67
	PWM-120-24	90-305V	24V	5.0A	120W	100-0.15 (100-10)	IP67
DALI	LIN100A1	120-277V	24V	1A per channel	100W	100-0.1	IP66/IP40
DMX RGB	LIN100A1	120-277V	24V	1.33A per channel	100W	100-0.1	IP66/IP40
DMX RGBW	LIN100A1	120-277A	24V	1A per channel	100W	100-0.1	IP66/IP40

Flicker Free Options - Combination of PSU+ sub-controller

Control Mode	PSU (Order Code)	Sub-controller (Order Code)	Input Voltage AC	Output Voltage DC	Rated Output Current	Rated Power	Dim %	IP Rating PSU/ Sub-controller
0-10V or 1-10V	CEN-60-24	KKDM-05	90-295V	24V	2.5A	60W	100-0.9	IP67/IP20
	HLG-60H-24	KKDM-05	90-295V	24V	2.5A	60W	100-0.9	IP67/IP20
	HLG-100H-24	KKDM-05	90-295V	24V	4.0A	100W	100-0.9	IP67/IP20
	HLG-150H-24	KKDM-05	90-295V	24V	6.3A	150W	100-0.9	IP67/IP20
	HLG-240H-24	KKDM-05	90-295V	24V	10.0A	240W	100-0.9	IP67/IP20
DALI	CEN-60-24	KKDL-02/03	90-295V	24V	2.5A	60W	100-0.1	IP67/IP20
	HLG-60H-24	KKDL-02/03	90-305V	24V	2.5A	60W	100-0.1	IP67/IP20
	HLG-100H-24	KKDL-02/03	90-305V	24V	4.0A	100W	100-0.1	IP67/IP20
	HLG-150H-24	KKDL-02/03	90-305V	24V	6.3A	150W	100-0.1	IP67/IP20
	HLG-240H-24	KKDL-02/03	90-305V	24V	10.0A	240W	100-0.1	IP67/IP20
DMX RGB	CEN-60-24	KKSC-03	90-295V	24V	2.5A	60W	100-0.9	IP67/IP20
	HLG-60H-24	KKSC-03	90-305V	24V	2.5A	60W	100-0.9	IP67/IP20
	HLG-100H-24	KKSC-03	90-305V	24V	4A	100W	100-0.9	IP67/IP20
	HLG-150H-24	KKSC-03	90-305V	24V	6.3A	150W	100-0.9	IP67/IP20
	HLG-240H-24	KKSC-03	90-305V	24V	10.0A	240W	100-0.9	IP67/IP20

¹ The items shown above cover the most frequently used specification but does not exhaust the possible options

² PSU and/or driver can be chosen from the table, or KKDC may recommend the best option upon receipt of the controls requirement and installation environment

³ Electrical shop drawing will include detailed information of PSU and relevant control drivers

⁴ Cut sheets are available on the controls section of www.kkdc.lighting or upon request

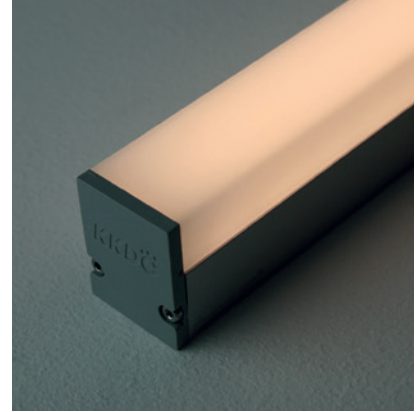
Linear

LiNi Glow XL 508

Fixture Guide

KKDÖ

Indoor | Surface | Mid output up to 1040lm/m (317lm/ft)

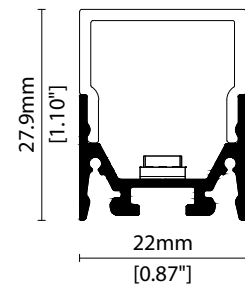


Key applications

- ✓ Architectural detail
- ✓ Ceiling
- ✓ Cove lighting
- ✓ Downlighting
- ✓ Indirect lighting
- ✓ Interior
- ✓ Mirror back lighting
- ✓ Shelving display
- ✓ Under bench
- ✓ Under cabinet

Key features

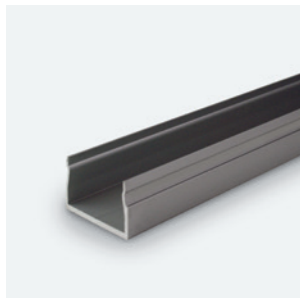
- ✓ Custom lengths
- ✓ Diffusion: Homogenous
- ✓ Direct view
- ✓ Extensive CCT range
- ✓ Form factor: Medium
- ✓ IP40
- ✓ Output mid



MOUNTING METHODS



KKCP-11 Concealed clip



KKCR-01-1000 Cable raceway (1000mm)
KKCR-02-2000 Cable raceway (2000mm)
KKCR-03-3000 Cable raceway (3000mm)



KKJT-02 Joining bar

Linear

LiNi Glow XL 508

Specification sheet



Dimension	H28/W22/L82.4-2011mm (H1.1/W0.87/L3.24-79.17in)
PCB increment	71.4mm increment/2000mm max (2.81in increment/78.74in max)
LED pitch	11.9mm - 84LED/m (0.47in - 26LED/ft)
Chip	s/e-line Toyoda Gosei k-line Samsung
Beam angle	156° (Diffused Cover)
Colours	n-line 2700K/3000K s/e-line 2100K/2300K/2500K/2700K/3000K/3200K/3500K/4000K/5000K k-line 1900K/2100K/2500K/2700K/3000K/3500K/4000K/5000K
Bin/Step	s-line 2-step MacAdam ellipse e/k-line 3-step MacAdam ellipse
CRI	≥ 90
Lifetime	50,000 hours @ 25°C (50,000 hours @ 77°F)
Operating temp	T _a = -25 to 50°C (T _c max = 63°C) T _a = -13 to 122°F (T _c max = 145.4°F)
IP rating	IP40
Finish	Silver anodised
Cover/lens	Diffused
Mounting	Surface mounting via concealed clips or cable raceway
Power feed	Hardwire tails or male/female connectors
Control	0-10V/1-10V/DMX/DALI



LED Grading Key

Exclusive Grade

n-line*	Full visible spectrum NO UV or IR 380nm-780nm 3-step CCT range	*KKDC tuned CCT range
s-line*	2-step CCT range	
e-line*	3-step CCT range	

Base Grade

k-line	3-step commercial range Energy Star CCTs
---------------	---

PERFORMANCE DATA @ 3000K

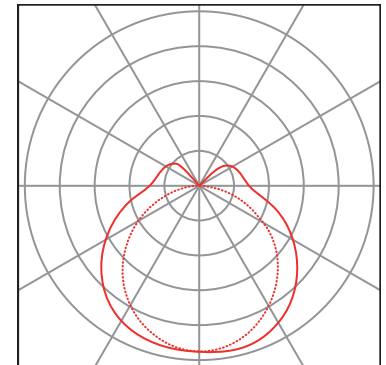
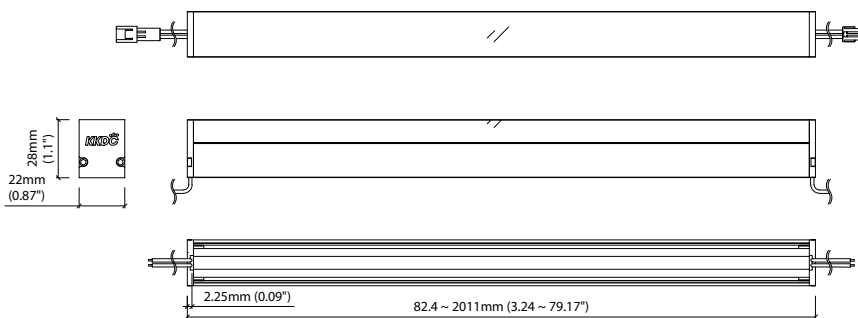
Power consumption	Supply voltage	Supply current
17.5W/m (5.33W/ft)	24V DC	0.73A/m (0.22A/ft)

Colour Rendering Index (CRI)

	R1	R2	R3	R4	R5	R6	R7	R8	R9	R10	R11	R12	R13	R14
n-line	99	99	98	98	99	97	94	90	79	98	97	92	99	98
k-line	94	97	98	93	93	96	92	83	60	93	94	82	95	99

Diffused Cover

		CRI	R9	Rf	Rg
n-line	700lm/m (213lm/ft) 40.3lm/W				
s/e-line	1040lm/m (317lm/ft) 59.4lm/W	92	50	-	-
k-line	900lm/m (274lm/ft) 51.5lm/W	92	60	-	-



Data derived from independent UKAS/IESNA LM-79-08 accredited testing of production samples.

LiNi Glow XL 508

Code Table



FIXTURE

Model	Finish	Cover	Grade*	LED	Colour (CCT)	Length Availability**	IP	Cable Length	Power Feed***	Input		
LiNi Glow XL	GX	Silver Anodised SA	Diffused U cover	0	n ² n	508	1900K ¹ 19	m 82.4-2011mm 71.4mm increments	IP40 40	300mm/11.81" 0300	Single no sheath tail S00X	DC 24V g
					s s		2100K 21			1000mm/39.37" 1000	Double no sheath tail D00X	
					e e		2300K ¹ 23	i 3.24-79.17in 2.81in increments			Single no sheath IP20 connector S20X	
					k k		2500K 25				Double no sheath IP20 connector D20X	
							2700K 27	(Specify length code OR total run length)				
							3000K 30					
							3200K ¹ 32					
							3500K 35					
							4000K 40					
							5000K 50					

¹ 1900K is only available in k-line, 2300K & 3200K are only available in s/e-line ² n-line: 2700K/3000K

* Refer to **LED Grading Key** on **Specification sheet** page ** Refer to **Length Availability List** or enter total run length instead of length code *** Refer to **Power Feed Options** on **Options** pages

Code Example:

GX	-	SA	-	0	-	s	-	508	-	35K	-	m	-	511	-	40	-	0300	-	D00X	-	g
LiNi Glow XL		Silver Anodised		Diffused U cover		s		508		3500K		m		510.8mm		IP40		300mm/11.81"		Double no sheath tail		DC 24V

ACCESSORIES

Mounting Accessories

KKCP-11	Concealed Clip
KKCR-01-1000	1000mm/39.37" Cable Raceway
KKCR-01-2000	2000mm/78.74" Cable Raceway
KKCR-01-3000	3000mm/118.11" Cable Raceway
KKJT-02	Joining Bar

* Refer to **Mounting options** on **Accessories** pages

Connection Accessories

KKCN-01	2 PIN male & female 50mm/1.97" pair
KKCN-03	2 PIN male & female 300mm/11.81" pair
KKCN-06	2 PIN 300mm/11.81" extension lead

* Refer to **Power feed** on **Accessories** pages

PSU/Driver

0-10V/1-10V/Dali/DMX

* Refer to **Driver/PSU Options** page for details or provide requirement and KKDC to offer the suitable option

LED ENGINE VARIANTS (LED STRIP TYPE)

Colour	Output	LED	Lumen/m	Lumen/ft	W/m	W/ft	Spec Doc	Length	Increment
Single CCT	Low	352	300	91	5.5	1.67	LiNi Glow XL 352	94.3-2011mm/3.71-79.17in	83.3mm/3.28in
	Mid	504	750	229	12.5	3.81	LiNi Glow XL 504	111-2011mm/4.37-79.17in	100mm/3.94in
	Mid	508	1040	317	17.5	5.33	LiNi Glow XL 508	82.4-2011mm/3.24-79.17in	71.4mm/2.81in
Warm Dim/Dynamic White	Low	207	530	161	11	3.35	LiNi Glow XL 207	94.3-2011mm/3.71-79.17in	83.3mm/3.28in
	Mid	208	920	311	15.6	4.75	LiNi Glow XL 208	177.7-2011mm/7.00-79.17in	166.7mm/6.56in
RGB		501	Red 90 Green 193 Blue 32 RGB 280	Red 27 Green 59 Blue 10 RGB 85	15.6	4.75	LiNi Glow XL RGB	94.3-2011mm/3.71-79.17in	83.3mm/3.28in

* Performance data: s/e-line, diffused Cover, 3000K

LiNi Glow XL 508

Length Availability List

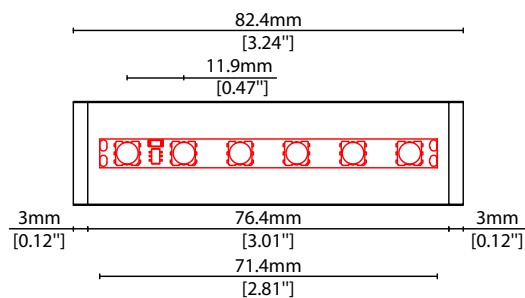


Length Code		Fixture Length ¹		LED Strip ²		End Cap Dimension ³		Wattage (W)	Output (lm)	
Metric	Imperial(US)	Metric	Imperial(US)	Metric	Imperial(US)	Metric	Imperial(US)		3000K (Test Data)	Range Data
m0082	i0003	82mm	3.25in	71mm	2.81in	6mm	0.24in	1.25	62	52-77
m0154	i0006	154mm	6.06in	143mm	5.62in	6mm	0.24in	2.50	124	103-154
m0225	i0009	225mm	8.87in	214mm	8.44in	6mm	0.24in	3.75	186	155-232
m0297	i0012	297mm	11.68in	286mm	11.25in	6mm	0.24in	5.00	248	206-309
m0368	i0014	368mm	14.49in	357mm	14.06in	6mm	0.24in	6.25	309	258-386
m0439	i0017	440mm	17.31in	429mm	16.87in	6mm	0.24in	7.50	371	309-463
m0511	i0020	511mm	20.12in	500mm	19.69in	6mm	0.24in	8.75	433	361-541
m0582	i0023	582mm	22.93in	571mm	22.50in	6mm	0.24in	10.00	495	412-618
m0654	i0026	654mm	25.74in	643mm	25.31in	6mm	0.24in	11.25	557	464-695
m0725	i0029	725mm	28.56in	714mm	28.12in	6mm	0.24in	12.50	619	515-772
m0797	i0031	797mm	31.37in	786mm	30.93in	6mm	0.24in	13.75	681	567-849
m0868	i0034	868mm	34.18in	857mm	33.75in	6mm	0.24in	15.00	743	618-927
m0939	i0037	940mm	36.99in	929mm	36.56in	6mm	0.24in	16.25	804	670-1004
m1011	i0040	1011mm	39.80in	1000mm	39.37in	6mm	0.24in	17.50	866	721-1081
m1082	i0043	1082mm	42.62in	1071mm	42.18in	6mm	0.24in	18.75	928	773-1158
m1154	i0045	1154mm	45.43in	1143mm	45.00in	6mm	0.24in	20.00	990	824-1236
m1225	i0048	1225mm	48.24in	1214mm	47.81in	6mm	0.24in	21.25	1052	876-1313
m1297	i0051	1297mm	51.05in	1286mm	50.62in	6mm	0.24in	22.50	1114	927-1390
m1368	i0054	1368mm	53.86in	1357mm	53.43in	6mm	0.24in	23.75	1176	979-1467
m1439	i0057	1440mm	56.68in	1429mm	56.24in	6mm	0.24in	25.00	1238	1030-1544
m1511	i0059	1511mm	59.49in	1500mm	59.06in	6mm	0.24in	26.25	1299	1082-1622
m1582	i0062	1582mm	62.30in	1571mm	61.87in	6mm	0.24in	27.50	1361	1133-1699
m1654	i0065	1654mm	65.11in	1643mm	64.68in	6mm	0.24in	28.75	1423	1185-1776
m1725	i0068	1725mm	67.93in	1714mm	67.49in	6mm	0.24in	30.00	1485	1236-1853
m1797	i0071	1797mm	70.74in	1786mm	70.31in	6mm	0.24in	31.25	1547	1288-1931
m1868	i0074	1868mm	73.55in	1857mm	73.12in	6mm	0.24in	32.50	1609	1339-2008
m1939	i0076	1940mm	76.36in	1929mm	75.93in	6mm	0.24in	33.75	1671	1391-2085
m2011	i0079	2011mm	79.17in	2000mm	78.74in	6mm	0.24in	35.00	1733	1442-2162

¹ Actual total overall length of light fixture (LED strip + end caps + void/wire hole)

² Actual length of PCB strip

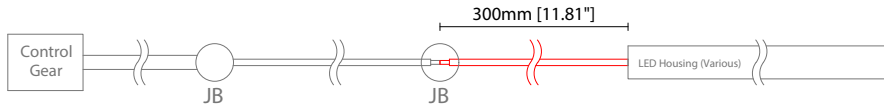
³ Actual length of 2x end caps



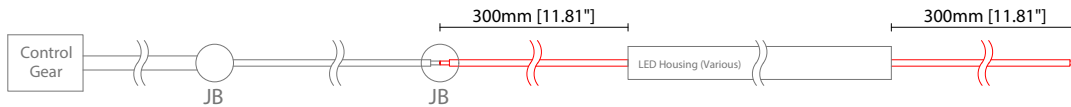
POWER FEED OPTIONS

* Options are an integral part of the fixture ordering codes. Please refer to **Code Table** pages.

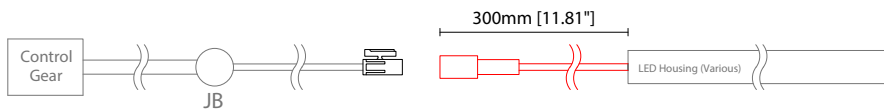
0300 S00X 300mm (11.81") Single no sheath tail



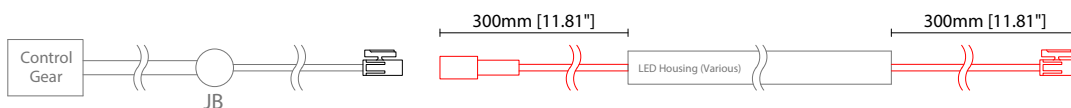
0300 D00X 300mm (11.81") Double no sheath tail



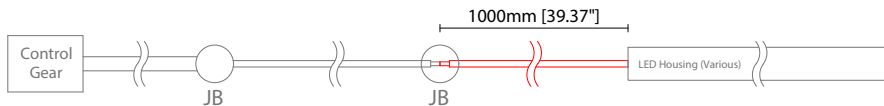
0300 S20X 300mm (11.81") Single no sheath IP20 connector



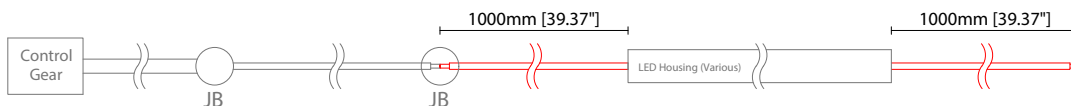
0300 D20X 300mm (11.81") Double no sheath IP20 connector



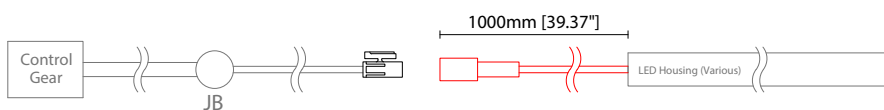
1000 S00X 1000mm (39.37") Single no sheath tail



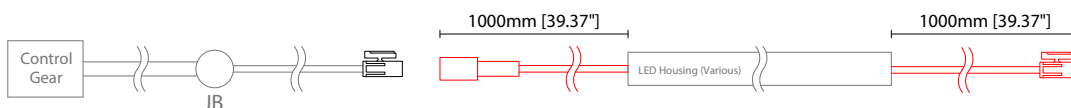
1000 D00X 1000mm (39.37") Double no sheath tail



1000 S20X 1000mm (39.37") Single no sheath IP20 connector



1000 D20X 1000mm (39.37") Double no sheath IP20 connector



Key

- Control Gear Power supply, sub-controllers & control systems
- JB Junction box / cable connection

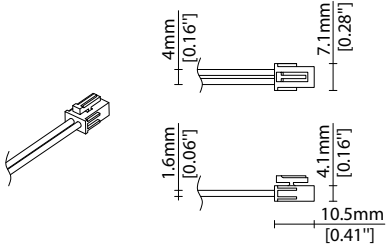
Linear

LiNi Glow XL 508 Options

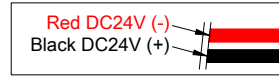
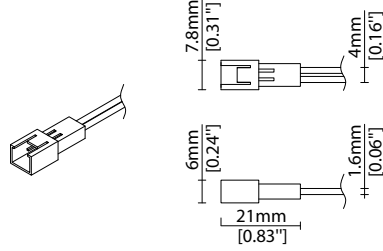


POWER FEED OPTIONS (CONTINUED)

2 Pin Female Connector



2 Pin Male Connector

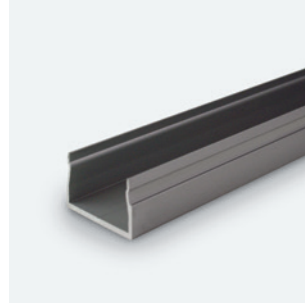
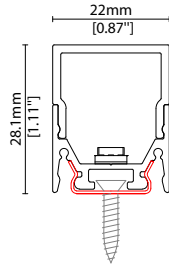


MOUNTING OPTIONS

Note: Accessories are to be ordered separately with corresponding code shown below.

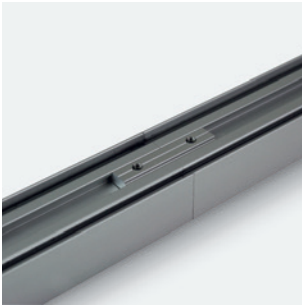
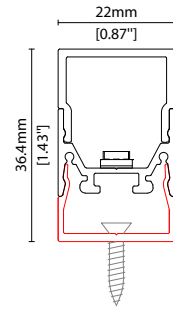


KKCP-11
 Concealed clip
 (allow 3 per metre/40in)
 S/Steel finish

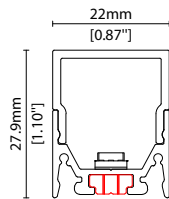


KKCR-01-1000 1000mm (39.37in)
KKCR-01-2000 2000mm (78.74in)
KKCR-01-3000 3000mm (118.11in)

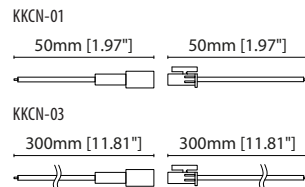
Cable raceway*
 Anodised aluminium finish
 * Cut & drilled to fit on site



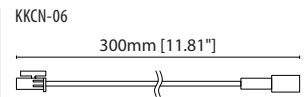
KKJT-02
 Joining bar* (allow 1 per join)
 Anodised aluminium finish
 * Mounting option required with
 Joining bar



POWER FEED



KKCN-01 50mm (1.97in) pair
KKCN-03 300mm (11.81in) pair
 2 PIN male + female connector set



KKCN-06
 2 PIN 300mm (11.81in) extension
 lead

Linear

LiNi Glow XL 508 Accessories

KKDÖ

KKDC CONTROL



IP20
Black plastic housing
L164/W64/H34mm
(L6.46/W2.52/H1.34in)

KKDM-05 1-10V
visDIM dimmable sub-controller



IP20
Black plastic housing
L164/W64/H34mm
(L6.46/W2.52/H1.34in)

KKSC-03A DMX (screw terminal)
visDIM dimmable sub-controller



IP20
Black plastic housing
L164/W64/H34mm
(L6.46/W2.52/H1.34in)

KKSC-03B DMX (RJ45)
visDIM dimmable sub-controller



IP20
Plastic housing
L170/W59/H29mm
(L6.69/W2.32/H1.14in)

KKDL-02 DALI
visDIM dimmable sub-controller
(4 x 8A max @ 12-36V)



IP20
Plastic housing
L166/W53.4/H23mm
(L6.54/W2.10/H0.91in)

KKDL-03 DALI
visDIM dimmable sub-controller
(4 x 5A max @ 12-36V)

AVAILABLE PSU OPTIONS

Control Mode	PSU (Order Code)	Input Voltage AC	Output Voltage DC	Rated Output Current	Rated Power	Dim %	IP Rating
Switched	CEN-60-24	90-295V	24V	2.5A	60W	-	IP67
	HLG-60H-24	90-305V	24V	2.5A	60W	-	IP67
	HLG-100H-24	90-305V	24V	4.0A	100W	-	IP67
	HLG-150H-24	90-305V	24V	6.3A	150W	-	IP67
	HLG-240H-24	90-305V	24V	10A	240W	-	IP67
0-10V (1-10V)	PWM-40-24	90-305V	24V	1.67A	40W	100-0.15 (100-10)	IP67
	PWM-60-24	90-305V	24V	2.5A	60W	100-0.15 (100-10)	IP67
	PWM-90-24	90-305V	24V	3.67A	90W	100-0.15 (100-10)	IP67
	PWM-120-24	90-305V	24V	5.0A	120W	100-0.15 (100-10)	IP67
DALI	LIN100A1	120-277V	24V	1A per channel	100W	100-0.1	IP66/IP40
DMX RGB	LIN100A1	120-277V	24V	1.33A per channel	100W	100-0.1	IP66/IP40
DMX RGBW	LIN100A1	120-277A	24V	1A per channel	100W	100-0.1	IP66/IP40

Flicker Free Options - Combination of PSU+ sub-controller

Control Mode	PSU (Order Code)	Sub-controller (Order Code)	Input Voltage AC	Output Voltage DC	Rated Output Current	Rated Power	Dim %	IP Rating PSU/ Sub-controller
0-10V or 1-10V	CEN-60-24	KKDM-05	90-295V	24V	2.5A	60W	100-0.9	IP67/IP20
	HLG-60H-24	KKDM-05	90-295V	24V	2.5A	60W	100-0.9	IP67/IP20
	HLG-100H-24	KKDM-05	90-295V	24V	4.0A	100W	100-0.9	IP67/IP20
	HLG-150H-24	KKDM-05	90-295V	24V	6.3A	150W	100-0.9	IP67/IP20
	HLG-240H-24	KKDM-05	90-295V	24V	10.0A	240W	100-0.9	IP67/IP20
DALI	CEN-60-24	KKDL-02/03	90-295V	24V	2.5A	60W	100-0.1	IP67/IP20
	HLG-60H-24	KKDL-02/03	90-305V	24V	2.5A	60W	100-0.1	IP67/IP20
	HLG-100H-24	KKDL-02/03	90-305V	24V	4.0A	100W	100-0.1	IP67/IP20
	HLG-150H-24	KKDL-02/03	90-305V	24V	6.3A	150W	100-0.1	IP67/IP20
	HLG-240H-24	KKDL-02/03	90-305V	24V	10.0A	240W	100-0.1	IP67/IP20
DMX RGB	CEN-60-24	KKSC-03	90-295V	24V	2.5A	60W	100-0.9	IP67/IP20
	HLG-60H-24	KKSC-03	90-305V	24V	2.5A	60W	100-0.9	IP67/IP20
	HLG-100H-24	KKSC-03	90-305V	24V	4A	100W	100-0.9	IP67/IP20
	HLG-150H-24	KKSC-03	90-305V	24V	6.3A	150W	100-0.9	IP67/IP20
	HLG-240H-24	KKSC-03	90-305V	24V	10.0A	240W	100-0.9	IP67/IP20

¹ The items shown above cover the most frequently used specification but does not exhaust the possible options

² PSU and/or driver can be chosen from the table, or KKDC may recommend the best option upon receipt of the controls requirement and installation environment

³ Electrical shop drawing will include detailed information of PSU and relevant control drivers

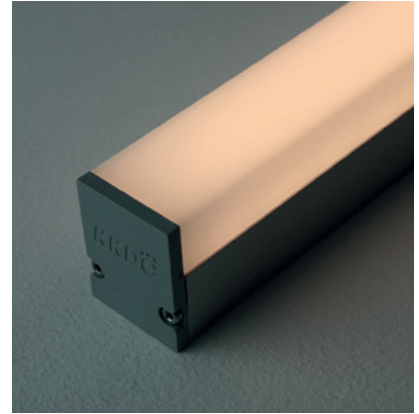
⁴ Cut sheets are available on the controls section of www.kkdc.lighting or upon request

Linear

LiNi Glow XL RGB Fixture Guide

KKDC

Indoor | Surface | RGB output

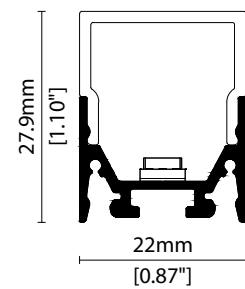


Key applications

- ✓ Architectural detail
- ✓ Cove lighting
- ✓ Indirect lighting
- ✓ Interior
- ✓ Orientation lighting
- ✓ Special effect

Key features

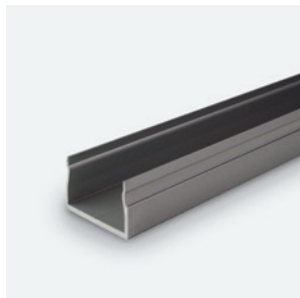
- ✓ Custom lengths
- ✓ Decorative
- ✓ Diffusion: Homogenous
- ✓ Direct view
- ✓ Form factor: Medium
- ✓ IP40
- ✓ RGB



MOUNTING METHODS



KKCP-11 Concealed clip



KKCR-01-1000 Cable raceway (1000mm)
KKCR-02-2000 Cable raceway (2000mm)
KKCR-03-3000 Cable raceway (3000mm)



KKJT-02 Joining bar

Linear

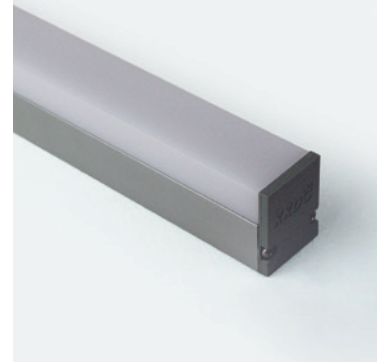
LiNi Glow XL RGB

Specification sheet

KKDC



Dimension	H28/W22/L94.3-2011mm (H1.1/W0.87/L3.71-79.17in)
PCB increment	83.3mm increment/2000mm max (3.28in increment/78.74in max)
LED pitch	13.9mm - 72LED/m (0.55in - 22LED/ft)
Chip	Red TEKCORE/Green EPILEDS/Blue 3E
Beam angle	156° (Diffused Cover)
Colours	Red 620-625nm/Blue 455-460nm/Green 520-525nm
Bin/Step	5nm tolerance
CRI	N/A
Lifetime	50,000 hours @ 25°C (50,000 hours @ 77°F)
Operating temp	T _a = -25 to 55°C (T _c max = 70°C) T _a = -13 to 131°F (T _c max = 158°F)
IP rating	IP40
Finish	Silver anodised
Cover/lens	Diffused
Mounting	Surface mounting via concealed clips or cable raceway
Power feed	Hardwire tails or male/female connectors
Control	DMX/DALI

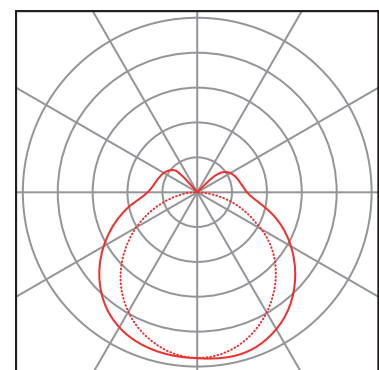
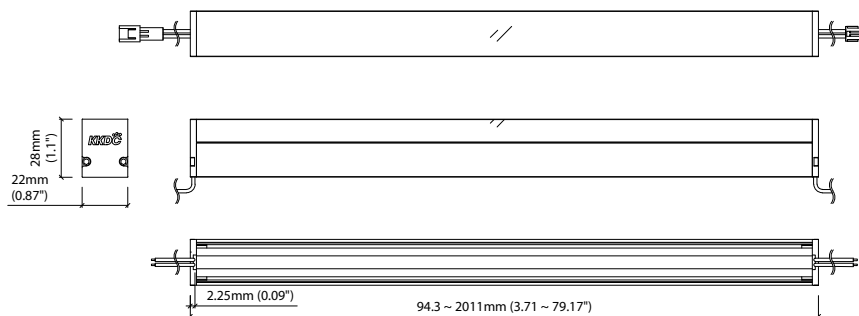


PERFORMANCE DATA

Power consumption	Supply voltage	Supply current
15.6W/m (4.75W/ft)	24V DC	0.65A/m (0.20A/ft)

Diffused Cover

Red: 90lm/m (27lm/ft)
Green: 193lm/m (59lm/ft)
Blue: 32lm/m (10lm/ft)
RGB: 280lm/m (85lm/ft)



— C0 / C180 cd / 1000 lm - - - C90 / C270

Data derived from IESNA LM-79-08 accredited testing of production samples.

See KKDC website for product document updates.

www.kkdc.lighting

LiNiGlowXLRGBs-02.01EN-20191202

Linear

LiNi Glow XL RGB

Code Table



FIXTURE

Model	Finish	Cover	Grade	LED	Colour (CCT)	Length Availability*	IP	Cable Length	Power Feed**	Input						
LiNi Glow XL	GX	Silver Anodised SA	Diffused U cover	0	s	501	RGB	RGB	m	94.3-2011mm 83.3mm increments	IP40	40	300mm/11.81" 0300	Single no sheath tail S00X	DC 24V	g
									i	3.71-79.17in 3.28in increments			1000mm/39.37" 1000	Double no sheath tail D00X		
										(Specify length code OR total run length)				Single no sheath IP20 connector S20X		
														Double no sheath IP20 connector D20X		

* Refer to **Length Availability List** or enter total run length instead of length code

** Refer to **Power Feed Options** on **Options** pages

Code Example:

GX	-	SA	-	0	-	s	-	501	-	RGB	-	m	511	-	40	-	0300	-	D00X	-	g
LiNi Glow XL		Silver Anodised		Diffused U cover				501		RGB		510.8mm		IP40		300mm/11.81"		Double no sheath tail		DC 24V	

ACCESSORIES

Mounting Accessories

KKCP-11	Concealed Clip
KKCR-01-1000	1000mm/39.37" Cable Raceway
KKCR-01-2000	2000mm/78.74" Cable Raceway
KKCR-01-3000	3000mm/118.11" Cable Raceway
KKJT-02	Joining Bar

Connection Accessories

KKCN-07	4 PIN RGB male & female 50mm/1.97" pair
KKCN-09	4 PIN RGB male & female 300mm/11.81" pair
KKCN-11	4 PIN RGB 300mm/11.81" extension lead

* Refer to **Power feed** on **Accessories** pages

PSU/Driver

Dali/DMX

* Refer to **Driver/PSU Options** page for details or provide requirement and KKDC to offer the suitable option

* Refer to **Mounting options** on **Accessories** pages

LED ENGINE VARIANTS (LED STRIP TYPE)

Colour	Output	LED	Lumen/m	Lumen/ft	W/m	W/ft	Spec Doc	Length	Increment
Single CCT	Low	352	300	91	5.5	1.67	LiNi Glow XL 352	94.3-2011mm/3.71-79.17in	83.3mm/3.28in
	Mid	504	750	229	12.5	3.81	LiNi Glow XL 504	111-2011mm/4.37-79.17in	100mm/3.94in
	Mid	508	1040	317	17.5	5.33	LiNi Glow XL 508	82.4-2011mm/3.24-79.17in	71.4mm/2.81in
Warm Dim/Dynamic White	Low	207	530	161	11	3.35	LiNi Glow XL 207	94.3-2011mm/3.71-79.17in	83.3mm/3.28in
	Mid	208	920	311	15.6	4.75	LiNi Glow XL 208	177.7-2011mm/7.00-79.17in	166.7mm/6.56in
RGB		501	Red 90 Green 193 Blue 32 RGB 280	Red 27 Green 59 Blue 10 RGB 85	15.6	4.75	LiNi Glow XL RGB	94.3-2011mm/3.71-79.17in	83.3mm/3.28in

* Performance data: diffused Cover, RGB

LiNi Glow XL RGB

Length Availability List

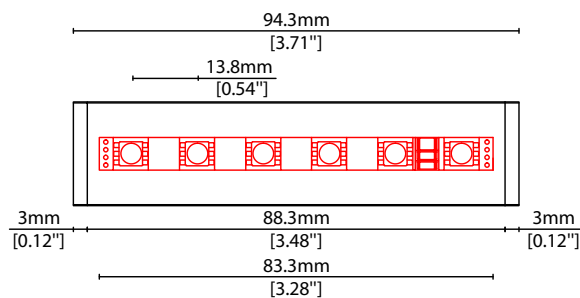


Length Code		Fixture Length ¹		LED Strip ²		End Cap Dimension ³		Wattage (W)	Output (lm)			
Metric	Imperial(US)	Metric	Imperial(US)	Metric	Imperial(US)	Metric	Imperial(US)		R	G	B	W
m0094	i0004	94mm	3.71in	83mm	3.28in	6mm	0.24in	1.30	8	16	3	23
m0178	i0007	178mm	7.00in	167mm	6.56in	6mm	0.24in	2.60	15	32	5	47
m0261	i0010	261mm	10.28in	250mm	9.84in	6mm	0.24in	3.90	23	48	8	70
m0344	i0014	344mm	13.56in	333mm	13.12in	6mm	0.24in	5.20	30	64	11	93
m0428	i0017	428mm	16.84in	417mm	16.41in	6mm	0.24in	6.50	38	80	13	117
m0511	i0020	511mm	20.12in	500mm	19.69in	6mm	0.24in	7.80	45	97	16	140
m0594	i0023	594mm	23.40in	583mm	22.97in	6mm	0.24in	9.10	53	113	19	163
m0678	i0027	678mm	26.68in	667mm	26.25in	6mm	0.24in	10.40	60	129	21	187
m0761	i0030	761mm	29.96in	750mm	29.53in	6mm	0.24in	11.70	68	145	24	210
m0844	i0033	844mm	33.24in	833mm	32.81in	6mm	0.24in	13.00	75	161	27	233
m0928	i0037	928mm	36.53in	917mm	36.09in	6mm	0.24in	14.30	83	177	29	257
m1011	i0040	1011mm	39.81in	1000mm	39.37in	6mm	0.24in	15.60	90	193	32	280
m1094	i0043	1094mm	43.09in	1083mm	42.65in	6mm	0.24in	16.90	98	209	35	303
m1178	i0046	1178mm	46.37in	1167mm	45.94in	6mm	0.24in	18.20	105	225	37	327
m1261	i0050	1261mm	49.65in	1250mm	49.22in	6mm	0.24in	19.50	113	241	40	350
m1344	i0053	1344mm	52.93in	1333mm	52.50in	6mm	0.24in	20.80	120	257	43	373
m1428	i0056	1428mm	56.21in	1417mm	55.78in	6mm	0.24in	22.10	128	273	45	397
m1511	i0059	1511mm	59.49in	1500mm	59.06in	6mm	0.24in	23.40	135	290	48	420
m1594	i0063	1594mm	62.77in	1583mm	62.34in	6mm	0.24in	24.70	143	306	51	443
m1678	i0066	1678mm	66.06in	1667mm	65.62in	6mm	0.24in	26.00	150	322	53	467
m1761	i0069	1761mm	69.34in	1750mm	68.90in	6mm	0.24in	27.30	158	338	56	490
m1844	i0073	1844mm	72.62in	1833mm	72.18in	6mm	0.24in	28.60	165	354	59	513
m1928	i0076	1928mm	75.90in	1917mm	75.47in	6mm	0.24in	29.90	173	370	61	537
m2011	i0079	2011mm	79.18in	2000mm	78.75in	6mm	0.24in	31.20	180	386	64	560

¹ Actual total overall length of light fixture (LED strip + end caps + void/wire hole)

² Actual length of PCB strip

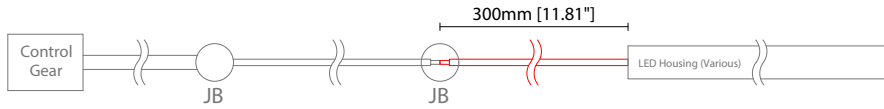
³ Actual length of 2x end caps



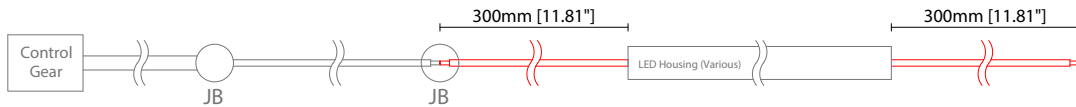
POWER FEED OPTIONS

* Options are an integral part of the fixture ordering codes. Please refer to **Code Table** pages.

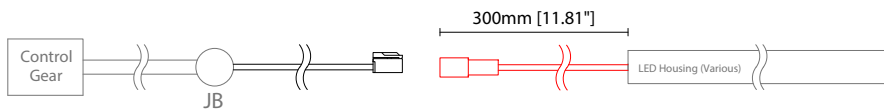
0300 S00X 300mm (11.81") Single no sheath tail



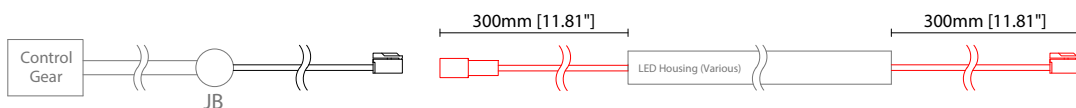
0300 D00X 300mm (11.81") Double no sheath tail



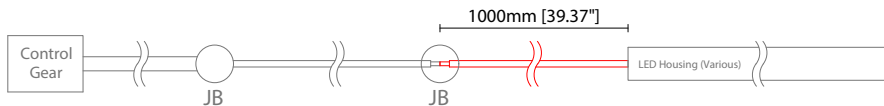
0300 S20X 300mm (11.81") Single no sheath IP20 connector



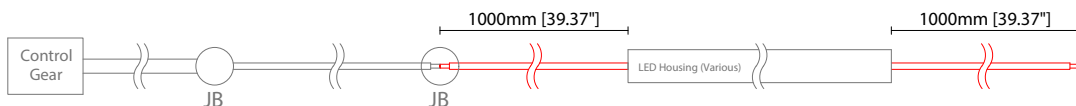
0300 D20X 300mm (11.81") Double no sheath IP20 connector



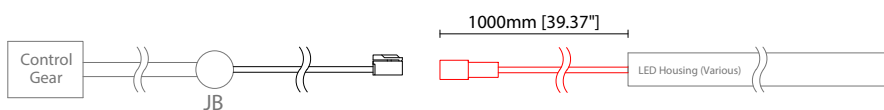
1000 S00X 1000mm (39.37") Single no sheath tail



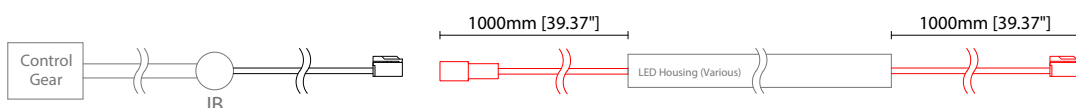
1000 D00X 1000mm (39.37") Double no sheath tail



1000 S20X 1000mm (39.37") Single no sheath IP20 connector



1000 D20X 1000mm (39.37") Double no sheath IP20 connector



Key

Control Gear Power supply, sub-controllers & control systems

JB Junction box / cable connection

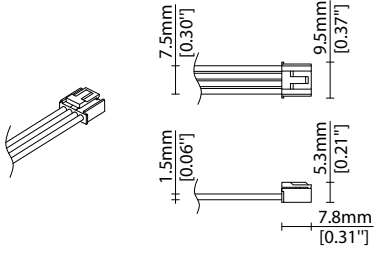
Linear

LiNi Glow XL RGB Options

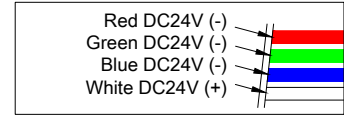
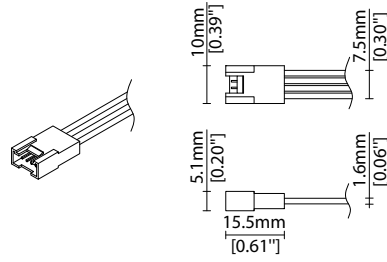


POWER FEED OPTIONS (CONTINUED)

4 Pin RGB Female Connector



4 Pin RGB Male Connector

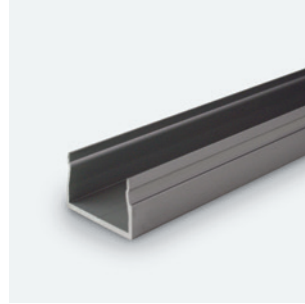
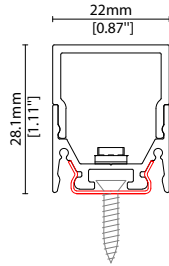


MOUNTING OPTIONS

Note: Accessories are to be ordered separately with corresponding code shown below.

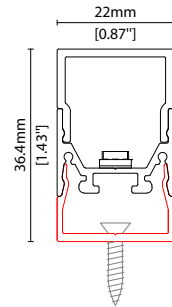


KKCP-11
 Concealed clip
 (allow 3 per metre/40in)
 S/Steel finish

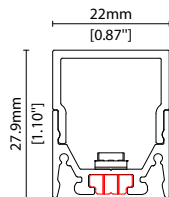


KKCR-01-1000 1000mm (39.37in)
KKCR-01-2000 2000mm (78.74in)
KKCR-01-3000 3000mm (118.11in)

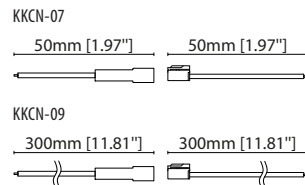
Cable raceway*
 Anodised aluminium finish
 * Cut & drilled to fit on site



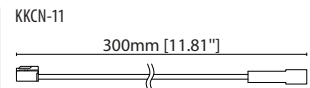
KKJT-02
 Joining bar* (allow 1 per join)
 Anodised aluminium finish
 * Mounting option required with
 Joining bar



POWER FEED



KKCN-07 50mm (1.97in) pair
KKCN-09 300mm (11.81in) pair
 4 PIN RGB male + female
 connector set



KKCN-11
 4 PIN RGB 300mm (11.81in)
 extension lead

KKDC CONTROL



IP20
Black plastic housing
L164/W64/H34mm
(L6.46/W2.52/H1.34in)

KKDM-05 1-10V
visDIM dimmable sub-controller



IP20
Black plastic housing
L164/W64/H34mm
(L6.46/W2.52/H1.34in)

KKSC-03A DMX (screw terminal)
visDIM dimmable sub-controller



IP20
Black plastic housing
L164/W64/H34mm
(L6.46/W2.52/H1.34in)

KKSC-03B DMX (RJ45)
visDIM dimmable sub-controller



IP20
Plastic housing
L170/W59/H29mm
(L6.69/W2.32/H1.14in)

KKDL-02 DALI
visDIM dimmable sub-controller
(4 x 8A max @ 12-36V)



IP20
Plastic housing
L166/W53.4/H23mm
(L6.54/W2.10/H0.91in)

KKDL-03 DALI
visDIM dimmable sub-controller
(4 x 5A max @ 12-36V)

AVAILABLE PSU OPTIONS

Control Mode	PSU (Order Code)	Input Voltage AC	Output Voltage DC	Rated Output Current	Rated Power	Dim %	IP Rating
Switched	CEN-60-24	90-295V	24V	2.5A	60W	-	IP67
	HLG-60H-24	90-305V	24V	2.5A	60W	-	IP67
	HLG-100H-24	90-305V	24V	4.0A	100W	-	IP67
	HLG-150H-24	90-305V	24V	6.3A	150W	-	IP67
	HLG-240H-24	90-305V	24V	10A	240W	-	IP67
0-10V (1-10V)	PWM-40-24	90-305V	24V	1.67A	40W	100-0.15 (100-10)	IP67
	PWM-60-24	90-305V	24V	2.5A	60W	100-0.15 (100-10)	IP67
	PWM-90-24	90-305V	24V	3.67A	90W	100-0.15 (100-10)	IP67
	PWM-120-24	90-305V	24V	5.0A	120W	100-0.15 (100-10)	IP67
DALI	LIN100A1	120-277V	24V	1A per channel	100W	100-0.1	IP66/IP40
DMX RGB	LIN100A1	120-277V	24V	1.33A per channel	100W	100-0.1	IP66/IP40
DMX RGBW	LIN100A1	120-277A	24V	1A per channel	100W	100-0.1	IP66/IP40

Flicker Free Options - Combination of PSU+ sub-controller

Control Mode	PSU (Order Code)	Sub-controller (Order Code)	Input Voltage AC	Output Voltage DC	Rated Output Current	Rated Power	Dim %	IP Rating PSU/ Sub-controller
0-10V or 1-10V	CEN-60-24	KKDM-05	90-295V	24V	2.5A	60W	100-0.9	IP67/IP20
	HLG-60H-24	KKDM-05	90-295V	24V	2.5A	60W	100-0.9	IP67/IP20
	HLG-100H-24	KKDM-05	90-295V	24V	4.0A	100W	100-0.9	IP67/IP20
	HLG-150H-24	KKDM-05	90-295V	24V	6.3A	150W	100-0.9	IP67/IP20
	HLG-240H-24	KKDM-05	90-295V	24V	10.0A	240W	100-0.9	IP67/IP20
DALI	CEN-60-24	KKDL-02/03	90-295V	24V	2.5A	60W	100-0.1	IP67/IP20
	HLG-60H-24	KKDL-02/03	90-305V	24V	2.5A	60W	100-0.1	IP67/IP20
	HLG-100H-24	KKDL-02/03	90-305V	24V	4.0A	100W	100-0.1	IP67/IP20
	HLG-150H-24	KKDL-02/03	90-305V	24V	6.3A	150W	100-0.1	IP67/IP20
	HLG-240H-24	KKDL-02/03	90-305V	24V	10.0A	240W	100-0.1	IP67/IP20
DMX RGB	CEN-60-24	KKSC-03	90-295V	24V	2.5A	60W	100-0.9	IP67/IP20
	HLG-60H-24	KKSC-03	90-305V	24V	2.5A	60W	100-0.9	IP67/IP20
	HLG-100H-24	KKSC-03	90-305V	24V	4A	100W	100-0.9	IP67/IP20
	HLG-150H-24	KKSC-03	90-305V	24V	6.3A	150W	100-0.9	IP67/IP20
	HLG-240H-24	KKSC-03	90-305V	24V	10.0A	240W	100-0.9	IP67/IP20

¹ The items shown above cover the most frequently used specification but does not exhaust the possible options

² PSU and/or driver can be chosen from the table, or KKDC may recommend the best option upon receipt of the controls requirement and installation environment

³ Electrical shop drawing will include detailed information of PSU and relevant control drivers

⁴ Cut sheets are available on the controls section of www.kkdc.lighting or upon request