

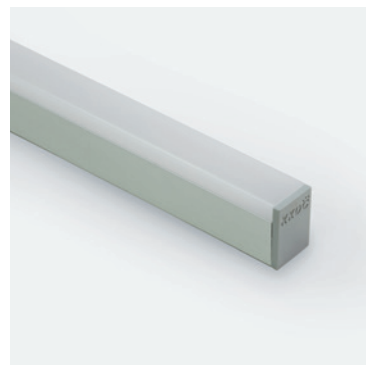
Linear

# LiNi Glow 007

## Specification sheet



<b>Dimension</b>	H19/W13/L97.4-2014mm (H0.75/W0.51/L3.83-79.29in)	
<b>PCB increment</b>	41.7mm increment/2000mm max (1.64in increment/78.74in max)	
<b>LED pitch</b>	6.9mm - 144LED/m (0.27in - 44LED/ft)	
<b>Chip</b>	<b>s/e-line</b>	Toyoda Gosei
	<b>k-line</b>	Samsung
<b>Beam angle</b>	134°	
<b>Colours</b>	<b>s/e-line</b>	2100K/2500K/2700K/3000K/3500K/4000K/5000K
	<b>s-line</b>	Single colours: Red/Green/Blue/Orange/Amber
	<b>k-line</b>	1900K/2100K/2500K/2700K/3000K/3500K/4000K/5000K
<b>Bin/Step</b>	<b>s-line</b>	2-step MacAdam ellipse
	<b>e/k-line</b>	3-step MacAdam ellipse
<b>CRI</b>	≥ 90	
<b>Lifetime</b>	50,000 hours @ 25°C (50,000 hours @ 77°F)	
<b>Operating temp</b>	T <sub>a</sub> = -25 to 55°C (T <sub>c</sub> max = 73°C) T <sub>a</sub> = -13 to 131°F (T <sub>c</sub> max = 163.4°F)	
<b>IP rating</b>	IP40	
<b>Finish</b>	Silver anodised	
<b>Cover/lens</b>	Diffused	
<b>Mounting</b>	Surface mounting via concealed clips	
<b>Power feed</b>	Hardwire tails or male/female connectors	
<b>Control</b>	0-10V/1-10V/DMX/DALI	



### LED Grading Key

<b>Exclusive Grade</b>	
<b>s-line*</b>	*KKDC tuned CCT range
2-step CCT range	
<b>e-line*</b>	
3-step CCT range	
<b>Base Grade</b>	
<b>k-line</b>	
3-step commercial range	
Energy Star CCTs	

### PERFORMANCE DATA @ 3000K

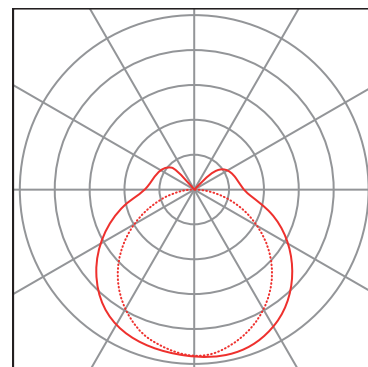
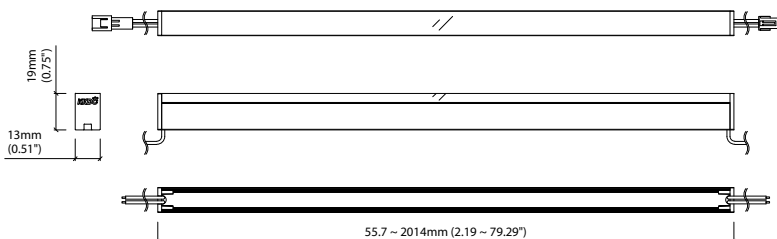
Power consumption	Supply voltage	Supply current
10.9W/m (3.32W/ft)	24V DC	0.45A/m (0.14A/ft)

### Colour Rendering Index (CRI)

	R1	R2	R3	R4	R5	R6	R7	R8	R9	R10	R11	R12	R13	R14
<b>k-line</b>	94	97	98	93	93	96	92	83	60	93	94	82	95	99

### Diffused Cover

		CRI	R9	Rf	Rg
<b>s/e-line</b>	550lm/m (167lm/ft) 50.2lm/W	93	63	-	-
<b>k-line</b>	540lm/m (165lm/ft) 49.5lm/W	92	60	-	-



Data derived from independent UKAS/IESNA LM-79-08 accredited testing of production samples.

Linear

# LiNi Glow 007

## Length Availability List



Length Code		Fixture Length <sup>1</sup>		LED Strip <sup>2</sup>		End Cap Dimension <sup>3</sup>		Wattage (W)	Output (lm)	
Metric	Imperial(US)	Metric	Imperial(US)	Metric	Imperial(US)	Metric	Imperial(US)		3000K (Test Data)	Range Data
m0056	i0002	56mm	2.19in	42mm	1.64in	14mm	0.55in	0.45	22	16-23
m0097	i0004	97mm	3.83in	83mm	3.28in	14mm	0.55in	0.91	45	32-47
m0139	i0005	139mm	5.47in	125mm	4.92in	14mm	0.55in	1.36	67	48-70
m0181	i0007	181mm	7.11in	167mm	6.56in	14mm	0.55in	1.82	90	64-94
m0222	i0009	222mm	8.75in	208mm	8.20in	14mm	0.55in	2.27	112	80-117
m0264	i0010	264mm	10.39in	250mm	9.84in	14mm	0.55in	2.73	135	95-140
m0306	i0012	306mm	12.04in	292mm	11.48in	14mm	0.55in	3.18	157	111-164
m0347	i0014	347mm	13.68in	333mm	13.12in	14mm	0.55in	3.63	180	127-187
m0389	i0015	389mm	15.32in	375mm	14.76in	14mm	0.55in	4.09	202	143-210
m0431	i0017	431mm	16.96in	417mm	16.41in	14mm	0.55in	4.54	225	159-234
m0472	i0019	472mm	18.60in	458mm	18.05in	14mm	0.55in	5.00	247	175-257
m0514	i0020	514mm	20.24in	500mm	19.69in	14mm	0.55in	5.45	270	191-281
m0556	i0022	556mm	21.88in	542mm	21.33in	14mm	0.55in	5.90	292	207-304
m0597	i0024	597mm	23.52in	583mm	22.97in	14mm	0.55in	6.36	315	223-327
m0639	i0025	639mm	25.16in	625mm	24.61in	14mm	0.55in	6.81	337	239-351
m0681	i0027	681mm	26.80in	667mm	26.25in	14mm	0.55in	7.27	360	255-374
m0722	i0028	722mm	28.44in	708mm	27.89in	14mm	0.55in	7.72	382	271-397
m0764	i0030	764mm	30.08in	750mm	29.53in	14mm	0.55in	8.18	405	286-421
m0806	i0032	806mm	31.72in	792mm	31.17in	14mm	0.55in	8.63	427	302-444
m0847	i0033	847mm	33.36in	833mm	32.81in	14mm	0.55in	9.08	450	318-468
m0889	i0035	889mm	35.00in	875mm	34.45in	14mm	0.55in	9.54	472	334-491
m0931	i0037	931mm	36.64in	917mm	36.09in	14mm	0.55in	9.99	495	350-514
m0972	i0038	972mm	38.28in	958mm	37.73in	14mm	0.55in	10.45	517	366-538
m1014	i0040	1014mm	39.92in	1000mm	39.37in	14mm	0.55in	10.90	540	382-561
m1056	i0042	1056mm	41.56in	1042mm	41.01in	14mm	0.55in	11.35	562	398-585
m1097	i0043	1097mm	43.21in	1083mm	42.65in	14mm	0.55in	11.81	585	414-608
m1139	i0045	1139mm	44.85in	1125mm	44.29in	14mm	0.55in	12.26	607	430-631
m1181	i0046	1181mm	46.49in	1167mm	45.94in	14mm	0.55in	12.72	629	446-655
m1222	i0048	1222mm	48.13in	1208mm	47.58in	14mm	0.55in	13.17	652	462-678
m1264	i0050	1264mm	49.77in	1250mm	49.22in	14mm	0.55in	13.63	674	477-701
m1306	i0051	1306mm	51.41in	1292mm	50.86in	14mm	0.55in	14.08	697	493-725
m1347	i0053	1347mm	53.05in	1333mm	52.50in	14mm	0.55in	14.53	719	509-748
m1389	i0055	1389mm	54.69in	1375mm	54.14in	14mm	0.55in	14.99	742	525-772
m1431	i0056	1431mm	56.33in	1417mm	55.78in	14mm	0.55in	15.44	764	541-795
m1472	i0058	1472mm	57.97in	1458mm	57.42in	14mm	0.55in	15.90	787	557-818
m1514	i0060	1514mm	59.61in	1500mm	59.06in	14mm	0.55in	16.35	809	573-842
m1556	i0061	1556mm	61.25in	1542mm	60.70in	14mm	0.55in	16.80	832	589-865
m1597	i0063	1597mm	62.89in	1583mm	62.34in	14mm	0.55in	17.26	854	605-888
m1639	i0065	1639mm	64.53in	1625mm	63.98in	14mm	0.55in	17.71	877	621-912
m1681	i0066	1681mm	66.17in	1667mm	65.62in	14mm	0.55in	18.17	899	637-935
m1722	i0068	1722mm	67.81in	1708mm	67.26in	14mm	0.55in	18.62	922	652-959
m1764	i0069	1764mm	69.45in	1750mm	68.90in	14mm	0.55in	19.08	944	668-982
m1806	i0071	1806mm	71.09in	1792mm	70.54in	14mm	0.55in	19.53	967	684-1005

# LiNi Glow 007

## Length Availability List

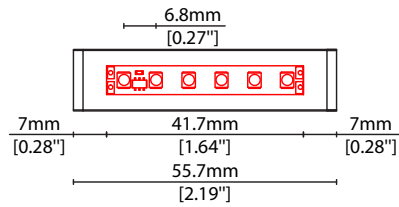


Length Code		Fixture Length <sup>1</sup>		LED Strip <sup>2</sup>		End Cap Dimension <sup>3</sup>		Wattage (W)	Output (lm)	
Metric	Imperial(US)	Metric	Imperial(US)	Metric	Imperial(US)	Metric	Imperial(US)		3000K (Test Data)	Range Data
m1847	i0073	1847mm	72.74in	1833mm	72.18in	14mm	0.55in	19.98	989	700-1029
m1889	i0074	1889mm	74.38in	1875mm	73.82in	14mm	0.55in	20.44	1012	716-1052
m1931	i0076	1931mm	76.02in	1917mm	75.47in	14mm	0.55in	20.89	1034	732-1076
m1972	i0078	1972mm	77.66in	1958mm	77.11in	14mm	0.55in	21.35	1057	748-1099
m2014	i0079	2014mm	79.30in	2000mm	78.75in	14mm	0.55in	21.80	1079	764-1122

<sup>1</sup> Length of fixture including aluminium extrusion and end clamps

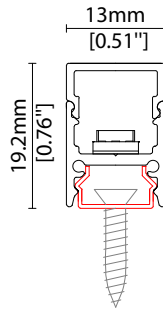
<sup>2</sup> Fixture without clamps available in this length upon request

<sup>3</sup> Overall dimension including both end caps and internal wiring space



### MOUNTING OPTIONS

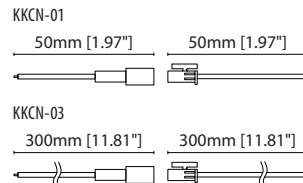
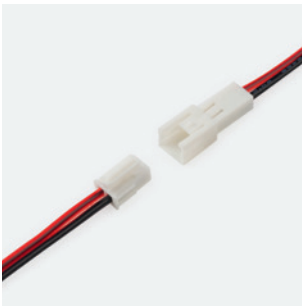
Note: Accessories are to be ordered separately with corresponding code shown below.



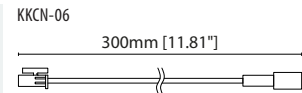
#### KKCP-10

Concealed clip  
(allow 3 per metre/40in)  
S/Steel finish

### POWER FEED



KKCN-01 50mm (1.97in) pair  
KKCN-03 300mm (11.81in) pair  
2 PIN male + female connector set



KKCN-06  
2 PIN 300mm (11.81in) extension lead

### KKDC CONTROL



IP20  
Black plastic housing  
L164/W64/H34mm  
(L6.46/W2.52/H1.34in)

KKDM-05 1-10V  
visDIM dimmable sub-controller



IP20  
Black plastic housing  
L164/W64/H34mm  
(L6.46/W2.52/H1.34in)

KKSC-03A DMX (screw terminal)  
visDIM dimmable sub-controller

Linear

# LiNi Glow 007 Accessories

# KKDÖ

## KKDC CONTROL (CONTINUED)



IP20  
Black plastic housing  
L164/W64/H34mm  
(L6.46/W2.52/H1.34in)

**KKSC-03B** DMX (RJ45)  
visDIM dimmable sub-controller



IP20  
Plastic housing  
L170/W59/H29mm  
(L6.69/W2.32/H1.14in)

**KKDL-02** DALI  
visDIM dimmable sub-controller  
(4 x 8A max @ 12-36V)



IP20  
Plastic housing  
L166/W53.4/H23mm  
(L6.54/W2.10/H0.91in)

**KKDL-03** DALI  
visDIM dimmable sub-controller  
(4 x 5A max @ 12-36V)

### AVAILABLE PSU OPTIONS

Control Mode	PSU (Order Code)	Input Voltage AC	Output Voltage DC	Rated Output Current	Rated Power	Dim %	IP Rating
Switched	CEN-60-24	90-295V	24V	2.5A	60W	-	IP67
	HLG-60H-24	90-305V	24V	2.5A	60W	-	IP67
	HLG-100H-24	90-305V	24V	4.0A	100W	-	IP67
	HLG-150H-24	90-305V	24V	6.3A	150W	-	IP67
	HLG-240H-24	90-305V	24V	10A	240W	-	IP67
0-10V (1-10V)	PWM-40-24	90-305V	24V	1.67A	40W	100-0.15 (100-10)	IP67
	PWM-60-24	90-305V	24V	2.5A	60W	100-0.15 (100-10)	IP67
	PWM-90-24	90-305V	24V	3.67A	90W	100-0.15 (100-10)	IP67
	PWM-120-24	90-305V	24V	5.0A	120W	100-0.15 (100-10)	IP67
DALI	LIN100A1	120-277V	24V	1A per channel	100W	100-0.1	IP66/IP40
DMX RGB	LIN100A1	120-277V	24V	1.33A per channel	100W	100-0.1	IP66/IP40
DMX RGBW	LIN100A1	120-277A	24V	1A per channel	100W	100-0.1	IP66/IP40

### Flicker Free Options - Combination of PSU+ sub-controller

Control Mode	PSU (Order Code)	Sub-controller (Order Code)	Input Voltage AC	Output Voltage DC	Rated Output Current	Rated Power	Dim %	IP Rating PSU/ Sub-controller
0-10V or 1-10V	CEN-60-24	KKDM-05	90-295V	24V	2.5A	60W	100-0.9	IP67/IP20
	HLG-60H-24	KKDM-05	90-295V	24V	2.5A	60W	100-0.9	IP67/IP20
	HLG-100H-24	KKDM-05	90-295V	24V	4.0A	100W	100-0.9	IP67/IP20
	HLG-150H-24	KKDM-05	90-295V	24V	6.3A	150W	100-0.9	IP67/IP20
	HLG-240H-24	KKDM-05	90-295V	24V	10.0A	240W	100-0.9	IP67/IP20
	CEN-60-24	KKDL-02/03	90-295V	24V	2.5A	60W	100-0.1	IP67/IP20
DALI	HLG-60H-24	KKDL-02/03	90-305V	24V	2.5A	60W	100-0.1	IP67/IP20
	HLG-100H-24	KKDL-02/03	90-305V	24V	4.0A	100W	100-0.1	IP67/IP20
	HLG-150H-24	KKDL-02/03	90-305V	24V	6.3A	150W	100-0.1	IP67/IP20
	HLG-240H-24	KKDL-02/03	90-305V	24V	10.0A	240W	100-0.1	IP67/IP20
DMX RGB	CEN-60-24	KKSC-03	90-295V	24V	2.5A	60W	100-0.9	IP67/IP20
	HLG-60H-24	KKSC-03	90-305V	24V	2.5A	60W	100-0.9	IP67/IP20
	HLG-100H-24	KKSC-03	90-305V	24V	4A	100W	100-0.9	IP67/IP20
	HLG-150H-24	KKSC-03	90-305V	24V	6.3A	150W	100-0.9	IP67/IP20
	HLG-240H-24	KKSC-03	90-305V	24V	10.0A	240W	100-0.9	IP67/IP20

<sup>1</sup> The items shown above cover the most frequently used specification but does not exhaust the possible options

<sup>2</sup> PSU and/or driver can be chosen from the table, or KKDC may recommend the best option upon receipt of the controls requirement and installation environment

<sup>3</sup> Electrical shop drawing will include detailed information of PSU and relevant control drivers

<sup>4</sup> Cut sheets are available on the controls section of [www.kkdc.lighting](http://www.kkdc.lighting) or upon request

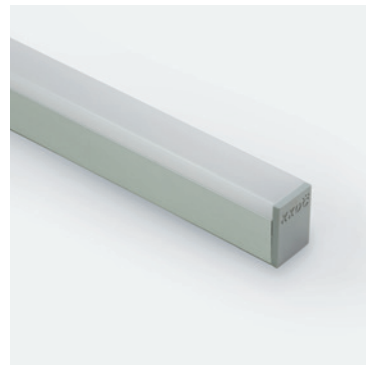
Linear

# LiNi Glow 508

## Specification sheet



<b>Dimension</b>	H19/W13/L85.4-2014mm (H0.75/W0.51/L3.36-79.29in)
<b>PCB increment</b>	71.4mm increment/2000mm max (2.81in increment/78.74in max)
<b>LED pitch</b>	11.9mm - 84LED/m (0.47in - 26LED/ft)
<b>Chip</b>	<b>n/s/e-line</b> Toyoda Gosei <b>k-line</b> Samsung
<b>Beam angle</b>	134°
<b>Colours</b>	<b>n-line</b> 2700K/3000K <b>s/e-line</b> 2100K/2300K/2500K/2700K/3000K/3200K/3500K/4000K/5000K <b>k-line</b> 1900K/2100K/2500K/2700K/3000K/3500K/4000K/5000K
<b>Bin/Step</b>	<b>s-line</b> 2-step MacAdam ellipse <b>e/k-line</b> 3-step MacAdam ellipse
<b>CRI</b>	≥ 90
<b>Lifetime</b>	50,000 hours @ 25°C (50,000 hours @ 77°F)
<b>Operating temp</b>	T <sub>a</sub> = -25 to 45°C (T <sub>c</sub> max = 78°C) T <sub>a</sub> = -13 to 113°F (T <sub>c</sub> max = 172.4°F)
<b>IP rating</b>	IP40
<b>Finish</b>	Silver anodised
<b>Cover/lens</b>	Diffused
<b>Mounting</b>	Surface mounting via concealed clips
<b>Power feed</b>	Hardwire tails or male/female connectors
<b>Control</b>	0-10V/1-10V/DMX/DALI



### LED Grading Key

<b>Exclusive Grade</b>	
<b>n-line*</b>	Full visible spectrum NO UV or IR 380nm-780nm 3-step CCT range
<b>s-line*</b>	2-step CCT range
<b>e-line*</b>	3-step CCT range
<b>Base Grade</b>	
<b>k-line</b>	3-step commercial range Energy Star CCTs

*\*KKDC tuned CCT range*

### PERFORMANCE DATA @ 3000K

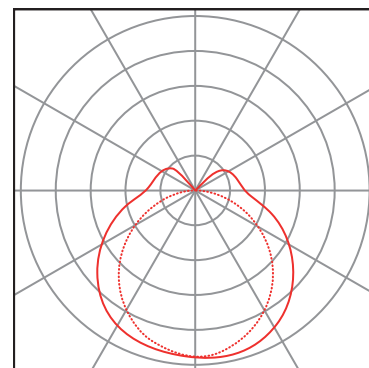
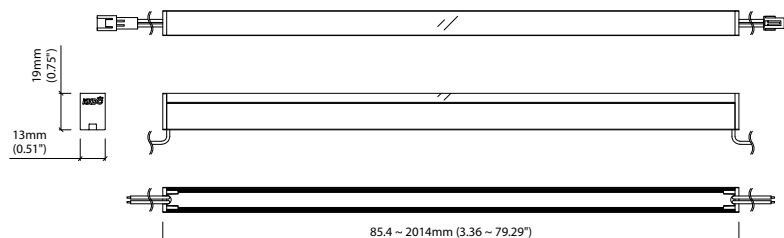
Power consumption	Supply voltage	Supply current
17.5W/m (5.33W/ft)	24V DC	0.73A/m (0.22A/ft)

### Colour Rendering Index (CRI)

	R1	R2	R3	R4	R5	R6	R7	R8	R9	R10	R11	R12	R13	R14
<b>k-line</b>	94	97	98	93	93	96	92	83	60	93	94	82	95	99

### Diffused Cover

		CRI	R9	Rf	Rg
<b>n-line</b>	690lm/m (211lm/ft) 39.7lm/W				
<b>s/e-line</b>	1030lm/m (314lm/ft) 58.8lm/W	92	50	-	-
<b>k-line</b>	880lm/m (268lm/ft) 50.4lm/W	93	62	-	-



Data derived from independent UKAS/IESNA LM-79-08 accredited testing of production samples.

# LiNi Glow 508

## Length Availability List

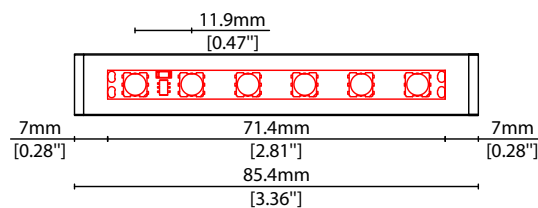


Length Code		Fixture Length <sup>1</sup>		LED Strip <sup>2</sup>		End Cap Dimension <sup>3</sup>		Wattage (W)	Output (lm)	
Metric	Imperial(US)	Metric	Imperial(US)	Metric	Imperial(US)	Metric	Imperial(US)		3000K (Test Data)	Range Data
m0085	i0003	85mm	3.36in	71mm	2.81in	14mm	0.55in	1.25	74	50-76
m0157	i0006	157mm	6.18in	143mm	5.62in	14mm	0.55in	2.50	147	101-153
m0228	i0009	228mm	8.99in	214mm	8.44in	14mm	0.55in	3.75	221	151-229
m0300	i0012	300mm	11.80in	286mm	11.25in	14mm	0.55in	5.00	294	202-306
m0371	i0015	371mm	14.61in	357mm	14.06in	14mm	0.55in	6.25	368	252-382
m0442	i0017	443mm	17.42in	429mm	16.87in	14mm	0.55in	7.50	441	302-459
m0514	i0020	514mm	20.24in	500mm	19.69in	14mm	0.55in	8.75	515	353-535
m0585	i0023	585mm	23.05in	571mm	22.50in	14mm	0.55in	10.00	588	403-612
m0657	i0026	657mm	25.86in	643mm	25.31in	14mm	0.55in	11.25	662	454-688
m0728	i0029	728mm	28.67in	714mm	28.12in	14mm	0.55in	12.50	735	504-764
m0800	i0031	800mm	31.49in	786mm	30.93in	14mm	0.55in	13.75	809	554-841
m0871	i0034	871mm	34.30in	857mm	33.75in	14mm	0.55in	15.00	882	605-917
m0942	i0037	943mm	37.11in	929mm	36.56in	14mm	0.55in	16.25	956	655-994
m1014	i0040	1014mm	39.92in	1000mm	39.37in	14mm	0.55in	17.50	1029	706-1070
m1085	i0043	1085mm	42.73in	1071mm	42.18in	14mm	0.55in	18.75	1103	756-1147
m1157	i0046	1157mm	45.55in	1143mm	45.00in	14mm	0.55in	20.00	1176	806-1223
m1228	i0048	1228mm	48.36in	1214mm	47.81in	14mm	0.55in	21.25	1250	857-1299
m1300	i0051	1300mm	51.17in	1286mm	50.62in	14mm	0.55in	22.50	1323	907-1376
m1371	i0054	1371mm	53.98in	1357mm	53.43in	14mm	0.55in	23.75	1397	958-1452
m1442	i0057	1443mm	56.80in	1429mm	56.24in	14mm	0.55in	25.00	1470	1008-1529
m1514	i0060	1514mm	59.61in	1500mm	59.06in	14mm	0.55in	26.25	1544	1058-1605
m1585	i0062	1585mm	62.42in	1571mm	61.87in	14mm	0.55in	27.50	1617	1109-1682
m1657	i0065	1657mm	65.23in	1643mm	64.68in	14mm	0.55in	28.75	1691	1159-1758
m1728	i0068	1728mm	68.04in	1714mm	67.49in	14mm	0.55in	30.00	1764	1210-1835
m1800	i0071	1800mm	70.86in	1786mm	70.31in	14mm	0.55in	31.25	1838	1260-1911
m1871	i0074	1871mm	73.67in	1857mm	73.12in	14mm	0.55in	32.50	1911	1310-1987
m1942	i0076	1943mm	76.48in	1929mm	75.93in	14mm	0.55in	33.75	1985	1361-2064
m2014	i0079	2014mm	79.29in	2000mm	78.74in	14mm	0.55in	35.00	2058	1411-2140

<sup>1</sup> Length of fixture including aluminium extrusion and end clamps

<sup>2</sup> Fixture without clamps available in this length upon request

<sup>3</sup> Overall dimension including both end caps and internal wiring space





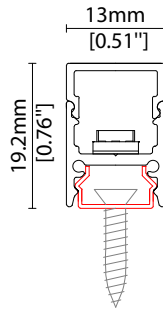
Linear

# LiNi Glow 508 Accessories

# KKDC

## MOUNTING OPTIONS

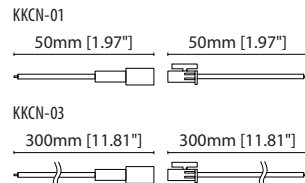
Note: Accessories are to be ordered separately with corresponding code shown below.



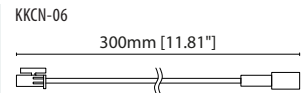
**KKCP-10**

Concealed clip  
(allow 3 per metre/40in)  
S/Steel finish

## POWER FEED



**KKCN-01** 50mm (1.97in) pair  
**KKCN-03** 300mm (11.81in) pair  
2 PIN male + female connector set



**KKCN-06**  
2 PIN 300mm (11.81in) extension lead

## KKDC CONTROL



IP20  
Black plastic housing  
L164/W64/H34mm  
(L6.46/W2.52/H1.34in)

**KKDM-05** 1-10V  
visDIM dimmable sub-controller



IP20  
Black plastic housing  
L164/W64/H34mm  
(L6.46/W2.52/H1.34in)

**KKSC-03A** DMX (screw terminal)  
visDIM dimmable sub-controller

Linear

# LiNi Glow 508 Accessories

# KKDÖ

## KKDC CONTROL (CONTINUED)



IP20  
Black plastic housing  
L164/W64/H34mm  
(L6.46/W2.52/H1.34in)

**KKSC-03B** DMX (RJ45)  
visDIM dimmable sub-controller



IP20  
Plastic housing  
L170/W59/H29mm  
(L6.69/W2.32/H1.14in)

**KKDL-02** DALI  
visDIM dimmable sub-controller  
(4 x 8A max @ 12-36V)



IP20  
Plastic housing  
L166/W53.4/H23mm  
(L6.54/W2.10/H0.91in)

**KKDL-03** DALI  
visDIM dimmable sub-controller  
(4 x 5A max @ 12-36V)

### AVAILABLE PSU OPTIONS

Control Mode	PSU (Order Code)	Input Voltage AC	Output Voltage DC	Rated Output Current	Rated Power	Dim %	IP Rating
Switched	CEN-60-24	90-295V	24V	2.5A	60W	-	IP67
	HLG-60H-24	90-305V	24V	2.5A	60W	-	IP67
	HLG-100H-24	90-305V	24V	4.0A	100W	-	IP67
	HLG-150H-24	90-305V	24V	6.3A	150W	-	IP67
	HLG-240H-24	90-305V	24V	10A	240W	-	IP67
0-10V (1-10V)	PWM-40-24	90-305V	24V	1.67A	40W	100-0.15 (100-10)	IP67
	PWM-60-24	90-305V	24V	2.5A	60W	100-0.15 (100-10)	IP67
	PWM-90-24	90-305V	24V	3.67A	90W	100-0.15 (100-10)	IP67
	PWM-120-24	90-305V	24V	5.0A	120W	100-0.15 (100-10)	IP67
DALI	LIN100A1	120-277V	24V	1A per channel	100W	100-0.1	IP66/IP40
DMX RGB	LIN100A1	120-277V	24V	1.33A per channel	100W	100-0.1	IP66/IP40
DMX RGBW	LIN100A1	120-277A	24V	1A per channel	100W	100-0.1	IP66/IP40

### Flicker Free Options - Combination of PSU+ sub-controller

Control Mode	PSU (Order Code)	Sub-controller (Order Code)	Input Voltage AC	Output Voltage DC	Rated Output Current	Rated Power	Dim %	IP Rating PSU/ Sub-controller
0-10V or 1-10V	CEN-60-24	KKDM-05	90-295V	24V	2.5A	60W	100-0.9	IP67/IP20
	HLG-60H-24	KKDM-05	90-295V	24V	2.5A	60W	100-0.9	IP67/IP20
	HLG-100H-24	KKDM-05	90-295V	24V	4.0A	100W	100-0.9	IP67/IP20
	HLG-150H-24	KKDM-05	90-295V	24V	6.3A	150W	100-0.9	IP67/IP20
	HLG-240H-24	KKDM-05	90-295V	24V	10.0A	240W	100-0.9	IP67/IP20
	CEN-60-24	KKDL-02/03	90-295V	24V	2.5A	60W	100-0.1	IP67/IP20
DALI	HLG-60H-24	KKDL-02/03	90-305V	24V	2.5A	60W	100-0.1	IP67/IP20
	HLG-100H-24	KKDL-02/03	90-305V	24V	4.0A	100W	100-0.1	IP67/IP20
	HLG-150H-24	KKDL-02/03	90-305V	24V	6.3A	150W	100-0.1	IP67/IP20
	HLG-240H-24	KKDL-02/03	90-305V	24V	10.0A	240W	100-0.1	IP67/IP20
DMX RGB	CEN-60-24	KKSC-03	90-295V	24V	2.5A	60W	100-0.9	IP67/IP20
	HLG-60H-24	KKSC-03	90-305V	24V	2.5A	60W	100-0.9	IP67/IP20
	HLG-100H-24	KKSC-03	90-305V	24V	4A	100W	100-0.9	IP67/IP20
	HLG-150H-24	KKSC-03	90-305V	24V	6.3A	150W	100-0.9	IP67/IP20
	HLG-240H-24	KKSC-03	90-305V	24V	10.0A	240W	100-0.9	IP67/IP20

<sup>1</sup> The items shown above cover the most frequently used specification but does not exhaust the possible options

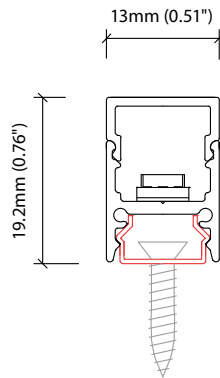
<sup>2</sup> PSU and/or driver can be chosen from the table, or KKDC may recommend the best option upon receipt of the controls requirement and installation environment

<sup>3</sup> Electrical shop drawing will include detailed information of PSU and relevant control drivers

<sup>4</sup> Cut sheets are available on the controls section of [www.kkdc.lighting](http://www.kkdc.lighting) or upon request

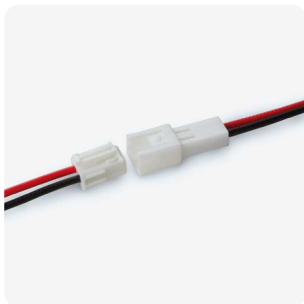


**MOUNTING OPTIONS**



**KKCP-10**  
Concealed Clip  
(Allow 3 per metre/40")  
S/Steel finish

**CONNECTORS**



**KKCN-01** 50mm (1.97") pair  
**KKCN-03** 300mm (11.81") pair  
2 PIN male + female connector set



**KKCN-06**  
2 PIN 300mm (11.81") extension lead

**KKDC CONTROL**



IP67  
100W 24V  
Aluminium housing  
L248/W73/H48mm  
(L9.76/W2.87/H1.89in)

**KKPS-01** 1-10V PSU\*  
visDIM dimmable power supply (See Control Gear)  
\* Not suitable for use with RGB/LEDmix



IP67  
100W 24V  
Aluminium housing  
L248/W73/H48mm  
(L9.76/W2.87/H1.89in)

**KKPS-02** DMX PSU  
visDIM dimmable power supply (See Control Gear)



**KKDC CONTROL (CONTINUED)**

---



IP67  
100W 24V  
Aluminium housing  
L248/W73/H48mm  
(L9.76/W2.87/H1.89in)

**KKPS-03** DALI PSU  
visDIM dimmable power supply (See Control Gear)



IP20  
Black plastic housing  
L164/W64/H34mm  
(L6.46/W2.52/H1.34in)

**KKDM-05** 1-10V  
visDIM dimmable sub-controllers (See Control Gear)



IP20  
Black plastic housing  
L164/W64/H34mm  
(L6.46/W2.52/H1.34in)

**KKSC-03A** DMX (Screw terminal)  
visDIM dimmable sub-controllers (See Control Gear)



IP20  
Black plastic housing  
L164/W64/H34mm  
(L6.46/W2.52/H1.34in)

**KKSC-03B** DMX (RJ45)  
visDIM dimmable sub-controllers (See Control Gear)



IP20  
Black plastic housing  
L164/W64/H34mm  
(L6.46/W2.52/H1.34in)

**KKDL-01** DALI  
visDIM dimmable sub-controllers (See Control Gear)



# LiNi Glow Code Table



Housing/Finish	Cover/Lens	LED Type	Colour (CCT)	Length Availability	IP Rating/Connection Type	Voltage
LiNi Glow, Silver anodised LGSA	Diffused U cover 0	n- 508 <sup>1</sup> n508	2100K 21K	LiNi Glow 007 M 55.7-2014mm 41.7mm increments	IP40, 50mm Single IP20 connector	24V DC g
			2300K 23K			
		s- 007 s007	2500K 25K	LiNi Glow 508 M 85.4-2014mm 71.4mm increments	IP40, 50mm Double IP20 connector	40a4
			2700K 27K			
		e- 007 e007	3000K 30K		IP40, 300mm Single tail	40c1
			3200K 32K			
		508 s508	3500K 35K		IP40, 300mm Double tail	40c2
			3800K 38K			
		500K 50K	5000K 50K		IP40, 300mm Single IP20 connector	40c3
		RED RED s- s007 only			IP40, 300mm Double IP20 connector	40c4
		GREEN GRN				
		BLUE BLU			IP40, 1000mm Single tail	40d1
		ORANGE ORN				
AMBER AMB						

<sup>1</sup> n-line: 2700K/3000K

### Code Example:

LGSA	-	0	-	s508	-	35K	-	M 514	-	40c2	-	g
LiNi Glow, Silver anodised		Diffused U cover		s-line 508		3500K		514mm		IP40, 300mm Double tail		24V DC