

A unique end cap free linear luminaire in a small profile for direct view applications

LIGHT OUTPUT

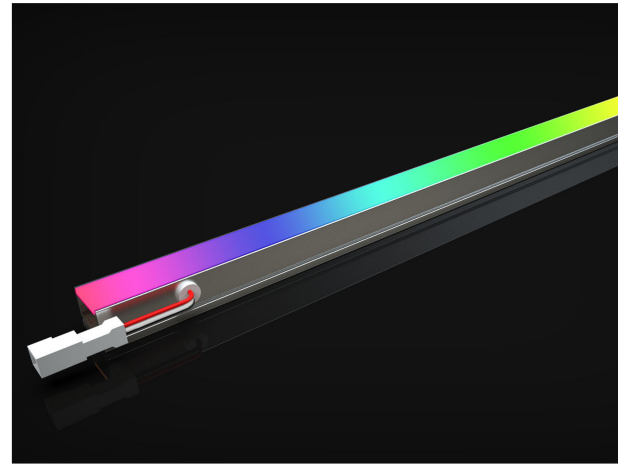
| | |
|-----------------------------|----------|
| CCT/LED Colour (K) | RGB |
| CRI | N/A |
| Luminaire Lumens | N/A |
| Optical Data/Beam Angle (°) | Diffused |
| LED Binning | RGB |

ELECTRICAL

| | |
|-------------------------------|---------------------------|
| Watts per meter (W/m) | 15 |
| Input Voltage | 24 VDC (23V min, 25V max) |
| Connection Type | JST JWPF IP67 |
| Maximum Chain Length (mm) | 4800 |
| Approx. Power Consumption (W) | 2 |
| Dimmable | Yes |
| Max Luminaire Length (mm) | 1005 |

PHYSICAL & ENVIRONMENTAL

| | |
|------------------------------------|-------------------------|
| Finish | Silver Anodised Housing |
| Length (mm) | 105 |
| Ambient Storage Temperature (°C) | -30 to +85 |
| Ambient Operating Temperature (°C) | -10 to +50 |
| IP Rating | IP67 |
| IK Rating | N/A |
| LED Pitch (mm) | 8.33 |
| Cable Exit/Entry | Side Exit |
| Weight (g) | N/A |



SPECIFICATION TEXT

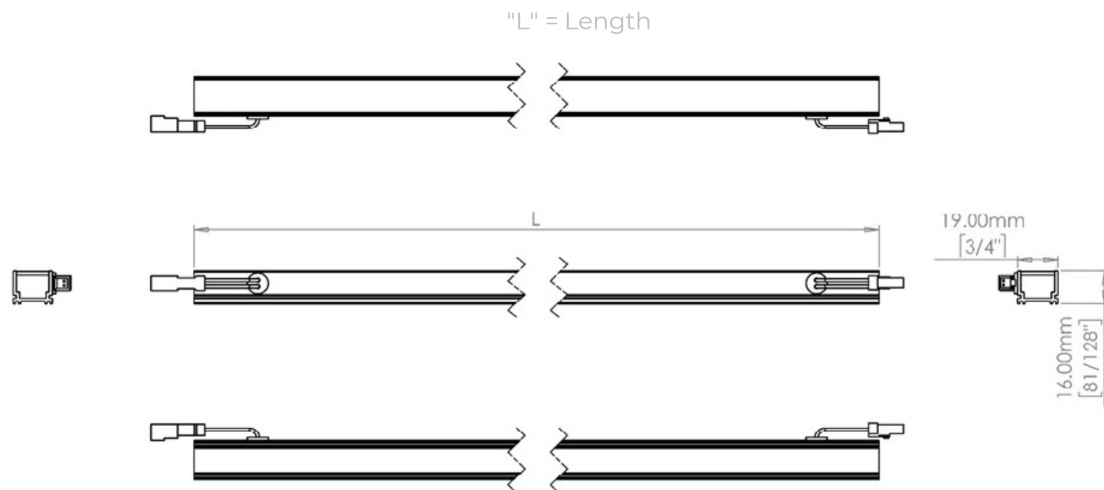
The LED lighting system provides end to end illumination without end caps. Our unique resin technology allows fixtures to be connected providing continuous lit effects for direct or indirect view. This unique profile connects using side exit cable management.
19 x 16mm / 0.74" x 0.629" cross-section.

*Must be used in conjunction with Hybriddrive6 or ArtnetI020 driver + PSU
*The max cable length from the first fitting to the driver is 1m, any extensions will require additional equipment. (Contact Vexica for more information)

PRODUCT FEATURES

- End to end connections
- IP67 rated for outdoor use
- Controlled by remote dynamic driver
- Dot free lit surfaces
- Fixing clips
- Mini linear profile
- Adjustable brackets and louvre options

DIMENSIONS



PART NUMBER: VEX-LUMAERA-19 - RGB-DYN - 105 - 15W - IP67 - DIF

Provided data are typical values. Due to tolerances of the production process, figures for light output, electrical data etc can vary up to 10%. The Tc-point must be measured in thermal equilibrium in accordance with IEC EN 60598-1.

Copyright © Vexica. All rights reserved. For informational purposes only.

Not a warranty or specification. Data subject to change without prior notice.