

A unique end cap free linear luminaire in a small profile for direct view applications

LIGHT OUTPUT

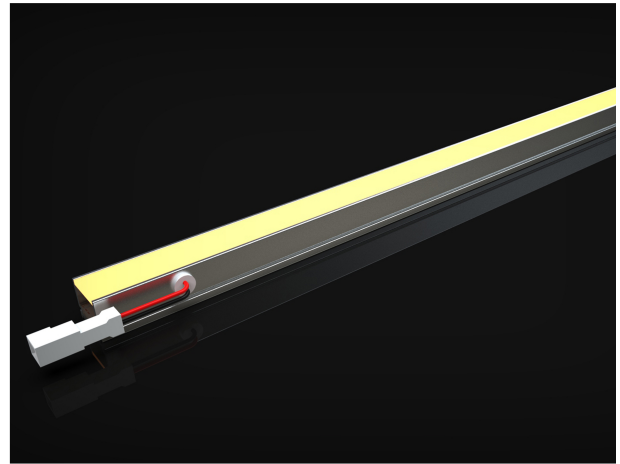
CCT/LED Colour (K)	2700K - 4000K
CRI	80
Luminaire Lumens	82
Optical Data/Beam Angle (°)	Diffused
LED Binning	3 SDCM

ELECTRICAL

Watts per meter (W/m)	15
Input Voltage	24 VDC (23V min, 25V max)
Connection Type	JST JWPF IP67
Maximum Chain Length (mm)	4800
Approx. Power Consumption (W)	2
Dimmable	Yes
Max Luminaire Length (mm)	1005

PHYSICAL & ENVIRONMENTAL

Finish	Silver Anodised Housing
Length (mm)	105
Ambient Storage Temperature (°C)	-30 to +85
Ambient Operating Temperature (°C)	-10 to +50
IP Rating	IP67
IK Rating	N/A
LED Pitch (mm)	8.33
Cable Exit/Entry	Side Exit
Weight (g)	N/A



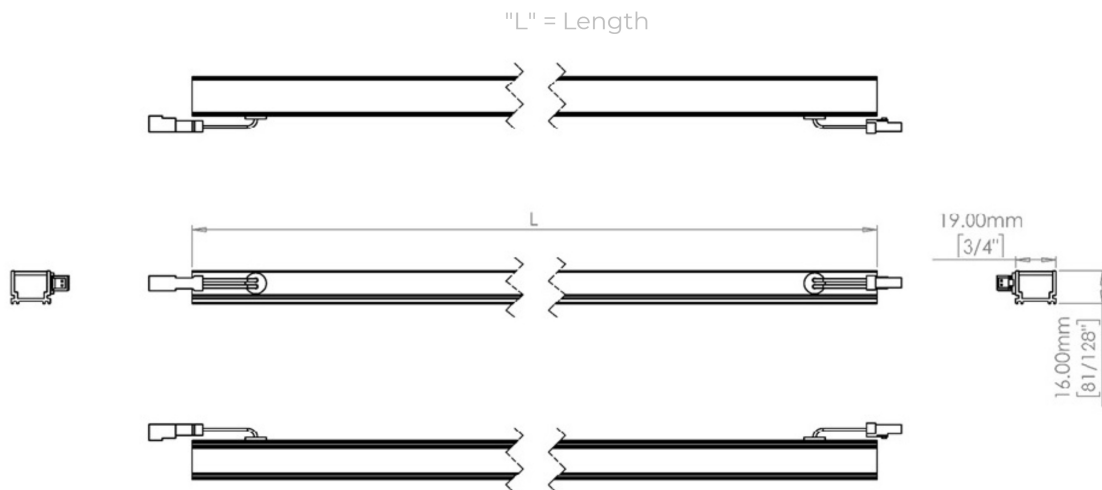
SPECIFICATION TEXT

The LED lighting system provides end to end illumination without end caps. Our unique resin technology allows fixtures to be connected providing continuous lit effects for direct or indirect view. This unique profile connects using side exit cable management. 19 x 16mm / 0.74" x 0.629" cross-section.

PRODUCT FEATURES

- End to end connections
- IP67 rated for outdoor use
- Dimmable via remote LED driver
- Dot free lit surfaces
- Fixing clips
- Mini linear profile
- Adjustable brackets and louvre options

DIMENSIONS



PART NUMBER: VEX-LUMAERA-19-TW - 2700K - 4000K - 105 - 15W - IP67 - DIF

Provided data are typical values. Due to tolerances of the production process, figures for light output, electrical data etc can vary up to 10%. The Tc-point must be measured in thermal equilibrium in accordance with IEC EN 60598-1.