

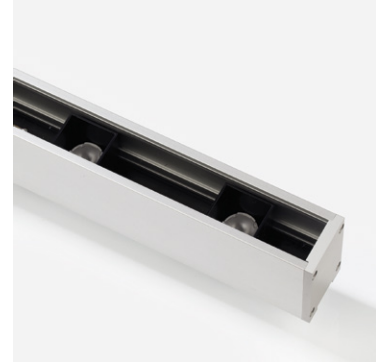


SEN Louvre 100

Specification sheet



Dimension	H43.2/W39.2/L210-1810mm (H1.70/W1.54/L8.27-71.26in) 1810mm (71.26in) max for UL
PCB increment	100mm (3.94in)
LED pitch	100mm - 10LED/m (3.94in - 3LED/ft)
Chip	hcc-line Cree
Beam angle	10°/20°/30°
Colours	hcc-line White: 2700K/3000K/3500K/4000K/5000K Single colours: Red/Green/Blue
Bin/Step	hcc-line 3 Step MacAdam Ellipse
CRI	80 (2700K-4000K)/75 (5000K)
Lifetime	50,000 hours @ 25°C (50,000 hours @ 77°F)
Operating temp	350mA: T _a = -25 to 75°C (T _c max = 82°C) T _a = -13 to 167°F (T _c max = 179.6°F) 700mA: T _a = -25 to 55°C (T _c max = 71°C) T _a = -13 to 131°F (T _c max = 159.8°F)
IP rating	IP54/67
Finish	Silver anodised
Cover/lens	Clear/Clear+Micro Louvre/Lens options
Mounting	Surface mounting via brackets
Connection	Sheathed hardwire tail
Control	0-10V/1-10V/DMX/DALI via. External power supply options



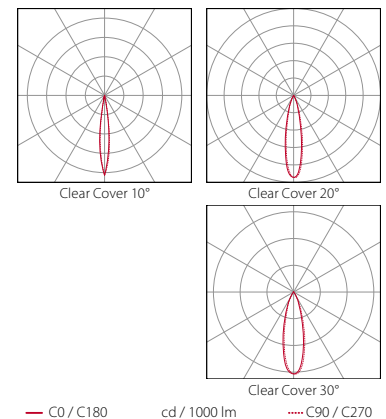
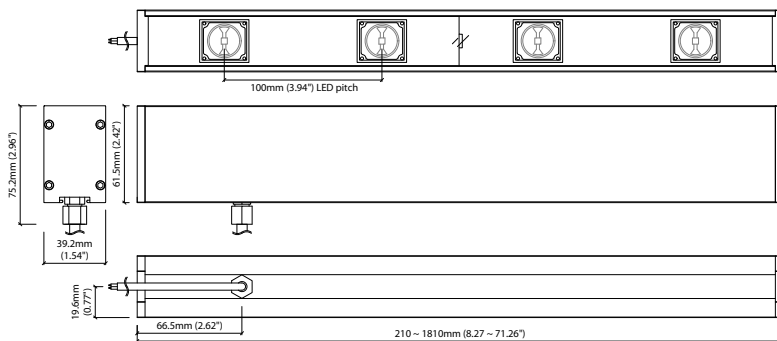
LED Grading Key

hcc	hcc-line*	
	Constant Current Lensed	
	High Power LED 2-step	*KKDC tuned
	CCT range	CCT range
	(4-step for 5000K, 6500K)	

PERFORMANCE DATA @ 3000K

Power consumption	Supply voltage	Supply current
TYP. 10.675W/m (3.25W/ft) @ 350mA	TYP. 30.5V/m (9.3V/ft) @ 350mA	0.35/0.7A/m (0.107/0.213A/ft)
TYP. 23.1W/m (7.04W/ft) @ 700mA	TYP. 33V/m (10.1V/ft) @ 700mA	

	Clear Cover 10°	Clear Cover 20°	Clear Cover 30°	CRI	R9	Rf	Rg
hcc-line	643lm/m (193lm/ft), 60.2lm/W @ 3000K, 350mA	607lm/m (185lm/ft), 56.9lm/W @ 3000K, 350mA	481lm/m (147lm/ft), 45lm/W @ 3000K, 350mA	-	-	-	-
	1063lm/m (362lm/ft), 46lm/W @ 3000K, 700mA	1004lm/m (306lm/ft), 43.5lm/W @ 3000K, 700mA	795lm/m (242lm/ft), 34.4lm/W @ 3000K, 700mA	-	-	-	-



Data derived from independent UKAS / IESNA LM-79-08 accredited testing of production samples.