

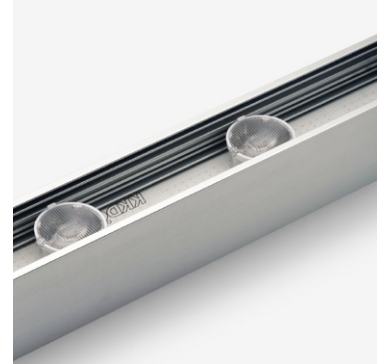


SEN 094 RGB

Specification sheet

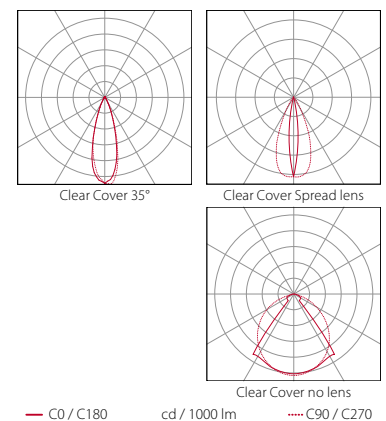
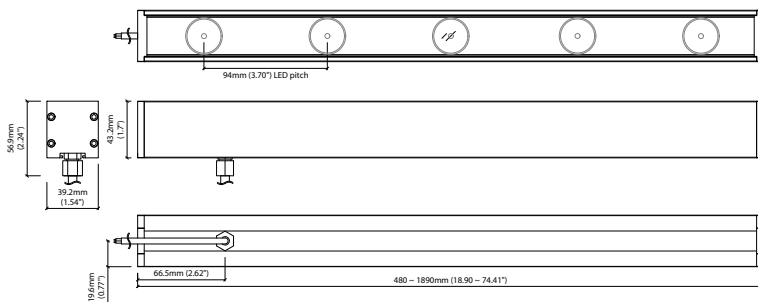


Dimension	H43.2/W39.2/L480-1890mm (H1.70/W1.54/L18.90-74.41in)
PCB increment	470mm (18.5in)
LED pitch	94mm - 10LED/m (3.7in - 3LED/ft)
Chip	Cree
Beam angle	35°/Spread lens (10°x45°)/No lens
Colours	Red 618-629nm/Blue 455-465nm/Green 518-535nm
Bin/Step	17nm tolerance
CRI	N/A
Lifetime	50,000 hours @ 25°C (50,000 hours @ 77°F)
Operating temp	T _a = -20 to 40°C (T _C max = 55°C) T _a = -4 to 104°F (T _C max = 131°F)
IP rating	IP54/67
Finish	Silver anodised
Cover/lens	Clear/Clear+Micro Louvre/Lens options
Mounting	Surface mounting via brackets
Connection	Sheathed hardwire tail
Control	Integral DMX receiver



PERFORMANCE DATA

Power consumption	Supply voltage	Supply current
16.3W/m (4.98W/ft)	24V DC	0.6A/m (0.183A/ft)
Clear Cover 35°	Clear Cover Spread Lens	Clear Cover No Lens
Red: 125lm/m (38lm/ft) Green: 374lm/m (114lm/ft) Blue: 161lm/m (5lm/ft) White: 502lm/m (153lm/ft)	Red: 125lm/m (38lm/ft) Green: 374lm/m (114lm/ft) Blue: 161lm/m (5lm/ft) White: 502lm/m (153lm/ft)	Red: 104lm/m (32lm/ft) Green: 311lm/m (114lm/ft) Blue: 13lm/m (4lm/ft) White: 419lm/m (128lm/ft)



Data derived from independent UKAS / IESNA LM-79-08 accredited testing of production samples.