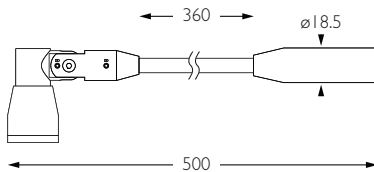


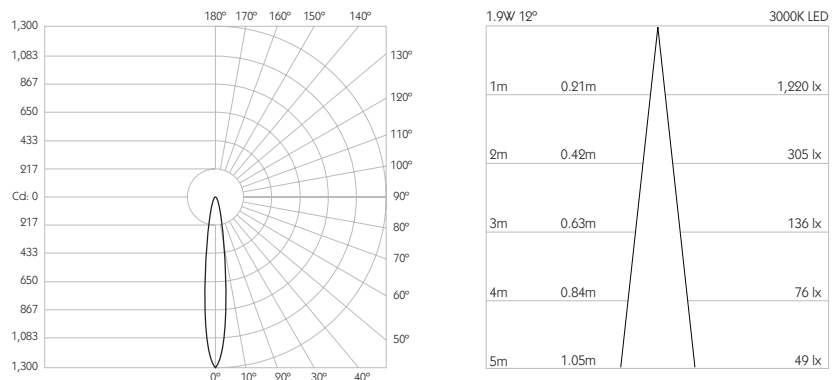


- Category** Interior use only IP20
 - Material** Machined Aluminium
 - Finish** Brushed Aluminium | Black | White | Custom
 - System** Monopoint | LV tracks
 - Lockable** Pan & Tilt
 - System Power** 1.9W
 - Module Output** 140lm
 - Absolute Output** 130lm
 - LOR** 93%
 - Colour Temperature** 3000K | 2700K | *
 - CRI** Ra: 95 **TM-30** Rf: 93 Rg: 99
 - Optics** 12°
 - Gear Type** Dimmable options available
 - Weight** 115g
 - Stem Length** 360mm | Custom available upon request
 - Accessory Dimensions** ø20mm x 2mm | Lenses ordered on request
- * Please enquire as to the availability of non-standard Colour Temperatures.



Pico S1 Plus is a discreet 95CRI LED spotlight, mounted to a 360mm stem, but with the additional capability of holding accessory lenses. The spotlight comes as standard in white, black and brushed aluminium finishes, and has three site changeable optics for flexible distribution. Movement is aided with a low friction bearing rotation and constant torque tilt mechanism, lockable in both pan and tilt. The Precision Lighting Jack Plug system enables the luminaire to be easily disconnected and reconnected to all of Precision Lighting's systems, offering flexibility throughout the product's lifetime. The onboard 24V driver ensures overcurrent protection and is not polarity sensitive. Pico S1 Plus is machined from aerospace grade 6063-T6 aluminium, delivering a lumen package of 140lm at 1.9W.

Product Photometry independently tested in accordance with LM-79



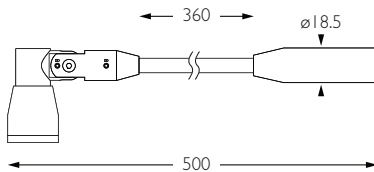
IP 20	95 CRI	CE	ETL US
LED	1.9W	24V	PART L
360°	180°	0.5m	Accessories Available

	BT-709-AL-XX9512	RT-709-AL-XX9512		MPS-709-AL-XX9512		MPX-709-AL-XX9512	MPY-709-AL-XX9512	MPZ-709-AL-XX9512
		RT-709-BK-XX9512		MPS-709-BK-XX9512		MPX-709-BK-XX9512	MPY-709-BK-XX9512	MPZ-709-BK-XX9512
		RT-709-WH-XX9512		MPS-709-WH-XX9512		MPX-709-WH-XX9512	MPY-709-WH-XX9512	MPZ-709-WH-XX9512

For 3000K Substitute XX with 30 | For 2700K Substitute XX with 27

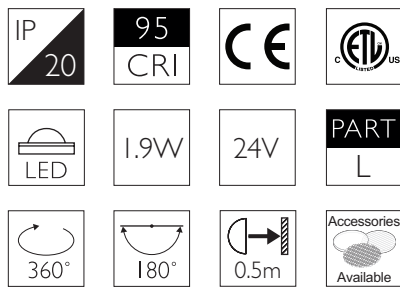
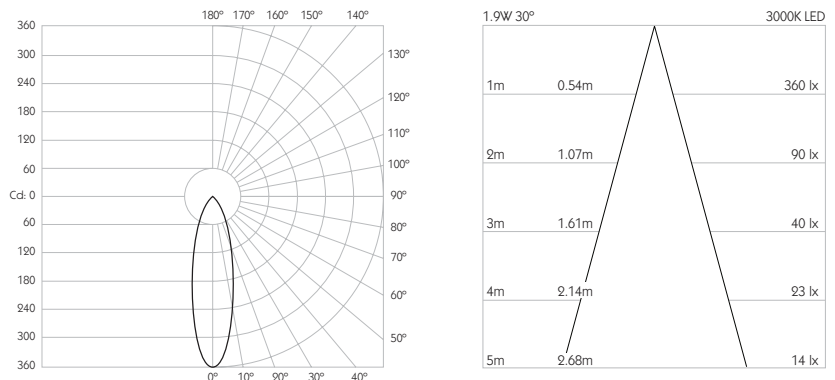


Category Interior use only IP20
Material Machined Aluminium
Finish Brushed Aluminium | Black | White | Custom
System Monopoint | LV tracks
Lockable Pan & Tilt
System Power 1.9W
Module Output 140lm
Absolute Output 119lm
LOR 85%
Colour Temperature 3000K | 2700K | *
CRI Ra: 95 **TM-30** Rf: 93 Rg: 99
Optics 30°
Gear Type Dimmable options available
Weight 115g
Stem Length 360mm | Custom available upon request
Accessory Dimensions ø20mm x 2mm | Lenses ordered on request
 * Please enquire as to the availability of non-standard Colour Temperatures.



Pico S1 Plus is a discreet 95CRI LED spotlight, mounted to a 360mm stem, but with the additional capability of holding accessory lenses. The spotlight comes as standard in white, black and brushed aluminium finishes, and has three site changeable optics for flexible distribution. Movement is aided with a low friction bearing rotation and constant torque tilt mechanism, lockable in both pan and tilt. The Precision Lighting Jack Plug system enables the luminaire to be easily disconnected and reconnected to all of Precision Lighting's systems, offering flexibility throughout the product's lifetime. The onboard 24V driver ensures overcurrent protection and is not polarity sensitive. Pico S1 Plus is machined from aerospace grade 6063-T6 aluminium, delivering a lumen package of 140lm at 1.9W.

Product Photometry independently tested in accordance with LM-79

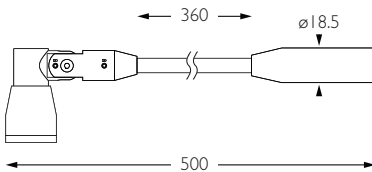


Accessory	Part Number	Part Number	Part Number	Part Number	Part Number	Part Number	Part Number	Part Number
Cable	BT-709-AL-XX9530	RT-709-AL-XX9530	MPS-709-AL-XX9530	MPX-709-AL-XX9530	MPY-709-AL-XX9530	MPZ-709-AL-XX9530		
Basis Track								
ReTrac								
Eutrac								
Trimless Monopoint								
Power Monopoint								
Flat Monopoint								
Node Monopoint								
Surface Monopoint								

For 3000K Substitute XX with 30 | For 2700K Substitute XX with 27

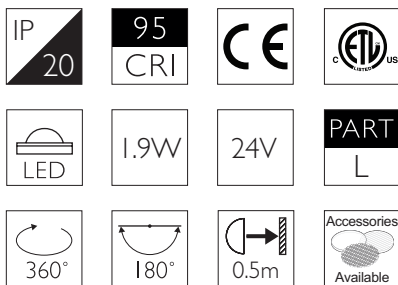
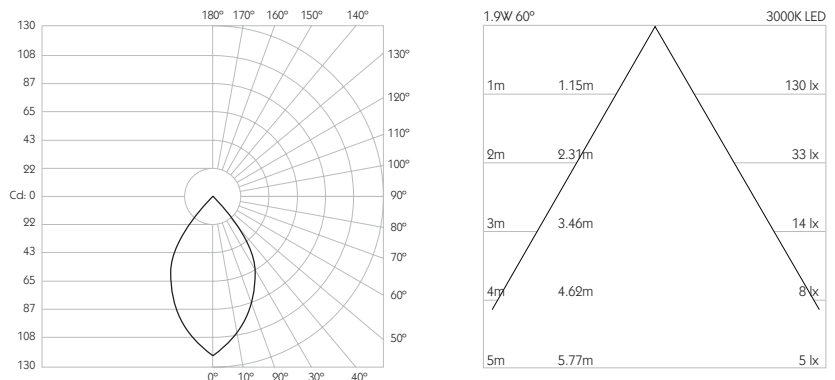


Category Interior use only IP20
Material Machined Aluminium
Finish Brushed Aluminium | Black | White | Custom
System Monopoint | LV tracks
Lockable Pan & Tilt
System Power 1.9W
Module Output 140lm
Absolute Output 130lm
LOR 93%
Colour Temperature 3000K | 2700K | *
CRI Ra: 95 **TM-30** Rf: 93 Rg: 99
Optics 60°
Gear Type Dimmable options available
Weight 115g
Stem Length 360mm | Custom available upon request
Accessory Dimensions \varnothing 20mm x 2mm | Lenses ordered on request
 * Please enquire as to the availability of non-standard Colour Temperatures.



Pico S1 Plus is a discreet 95CRI LED spotlight, mounted to a 360mm stem, but with the additional capability of holding accessory lenses. The spotlight comes as standard in white, black and brushed aluminium finishes, and has three site changeable optics for flexible distribution. Movement is aided with a low friction bearing rotation and constant torque tilt mechanism, lockable in both pan and tilt. The Precision Lighting Jack Plug system enables the luminaire to be easily disconnected and reconnected to all of Precision Lighting's systems, offering flexibility throughout the product's lifetime. The onboard 24V driver ensures overcurrent protection and is not polarity sensitive. Pico S1 Plus is machined from aerospace grade 6063-T6 aluminium, delivering a lumen package of 140lm at 1.9W.

Product Photometry independently tested in accordance with LM-79



Accessory	Part Number	Accessory	Part Number	Accessory	Part Number	Accessory	Part Number	Accessory	Part Number
Cable	BT-709-AL-XX9560	ReTrac	RT-709-AL-XX9560	Eutrac	MPS-709-AL-XX9560	Flat Monopoint	MPX-709-AL-XX9560	Node Monopoint	MPY-709-AL-XX9560
Basis Track	RT-709-BK-XX9560	Trimless Monopoint	MPS-709-BK-XX9560	Power Monopoint	MPX-709-BK-XX9560	Surface Monopoint	MPZ-709-BK-XX9560		
	RT-709-WH-XX9560		MPS-709-WH-XX9560		MPX-709-WH-XX9560		MPY-709-WH-XX9560		MPZ-709-WH-XX9560

For 3000K Substitute XX with 30 | For 2700K Substitute XX with 27