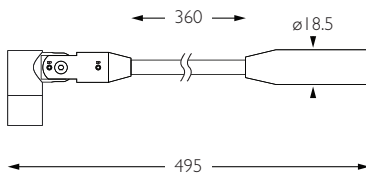


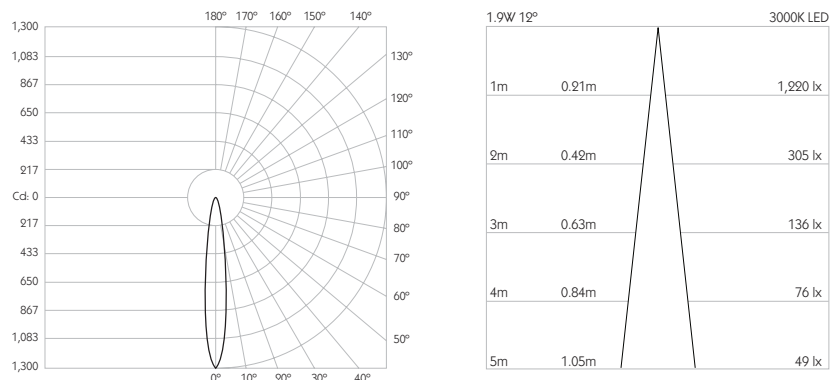


**Category** Interior use only IP20  
**Material** Machined Aluminium  
**Finish** Brushed Aluminium | Black | White | Custom  
**System** Monopoint | LV tracks  
**Lockable** Pan & Tilt  
**Accessories** Snoots  
**System Power** 1.9W  
**Module Output** 140lm  
**Absolute Output** 130lm  
**LOR** 93%  
**Colour Temperature** 3000K | 2700K | \*  
**CRI** Ra: 95    **TM-30** Rf: 93 Rg: 99  
**Optics** 12°  
**Gear Type** Dimmable options available  
**Weight** 100g  
**Stem Length** 360mm | Custom available upon request  
 \* Please enquire as to the availability of non-standard Colour Temperatures.



Pico S1 is a discreet 95CRI LED, mounted to a 360mm stem, other stem lengths are available on request. The spotlight comes as standard in white, black and brushed aluminium finishes, and has three site changeable optics for flexible distribution. Movement is aided with a low friction bearing rotation and constant torque tilt mechanism, lockable in both pan and tilt. The Precision Lighting Jack Plug system enables the luminaire to be easily disconnected and reconnected to all of Precision Lighting's systems, offering flexibility throughout the product's lifetime. The onboard 24V driver ensures overcurrent protection and is not polarity sensitive. Pico S1 is machined from aerospace grade 6063-T6 aluminium, delivering a lumen package of 140lm at 1.9W.

Product Photometry independently tested in accordance with LM-79



IP 20	95 CRI	CE	ETL US
LED	1.9W	24V	PART L
360°	180°	0.5m	Accessories Available

	BT-702-AL-XX9512	RT-702-AL-XX9512		MPS-702-AL-XX9512		MPX-702-AL-XX9512	MPY-702-AL-XX9512	MPZ-702-AL-XX9512
		RT-702-BK-XX9512		MPS-702-BK-XX9512		MPX-702-BK-XX9512	MPY-702-BK-XX9512	MPZ-702-BK-XX9512
		RT-702-WH-XX9512		MPS-702-WH-XX9512		MPX-702-WH-XX9512	MPY-702-WH-XX9512	MPZ-702-WH-XX9512

For 3000K Substitute XX with 30 | For 2700K Substitute XX with 27

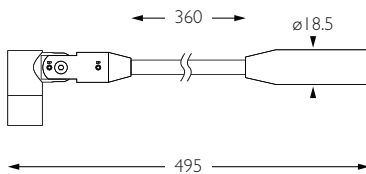
FLOOD



- Category** Interior use only IP20
- Material** Machined Aluminium
- Finish** Brushed Aluminium | Black | White | Custom
- System** Monopoint | LV tracks
- Lockable** Pan & Tilt
- Accessories** Snoots
- System Power** 1.9W
- Module Output** 140lm
- Absolute Output** 119lm
- LOR** 85%
- Colour Temperature** 3000K | 2700K | \*
- CRI** Ra: 95    **TM-30** Rf: 93 Rg: 99
- Optics** 30°
- Gear Type** Dimmable options available
- Weight** 100g
- Stem Length** 360mm | Custom available upon request

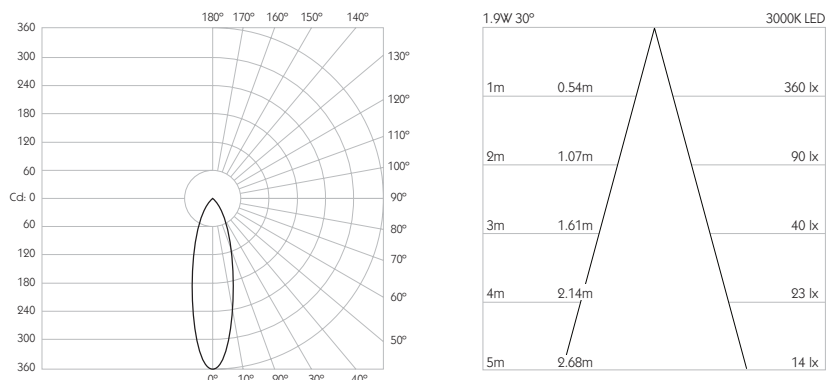


\* Please enquire as to the availability of non-standard Colour Temperatures.

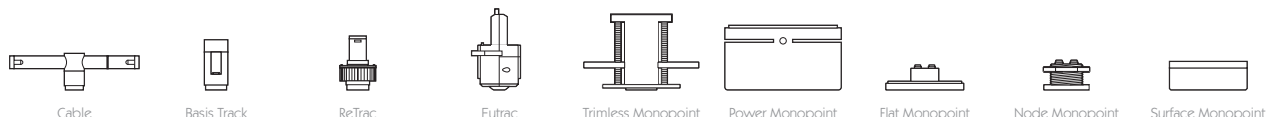


Pico S1 is a discreet 95CRI LED, mounted to a 360mm stem, other stem lengths are available on request. The spotlight comes as standard in white, black and brushed aluminium finishes, and has three site changeable optics for flexible distribution. Movement is aided with a low friction bearing rotation and constant torque tilt mechanism, lockable in both pan and tilt. The Precision Lighting Jack Plug system enables the luminaire to be easily disconnected and reconnected to all of Precision Lighting's systems, offering flexibility throughout the product's lifetime. The onboard 24V driver ensures overcurrent protection and is not polarity sensitive. Pico S1 is machined from aerospace grade 6063-T6 aluminium, delivering a lumen package of 140lm at 1.9W.

Product Photometry independently tested in accordance with LM-79



IP 20	95 CRI	CE	ETL US
LED	1.9W	24V	PART L
360°	180°	0.5m	Accessories Available



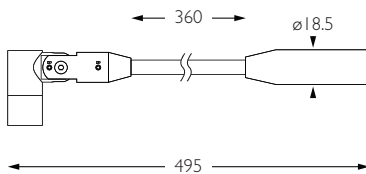
Grey	BT-702-AL-XX9530	RT-702-AL-XX9530	MPS-702-AL-XX9530	MPX-702-AL-XX9530	MPY-702-AL-XX9530	MPZ-702-AL-XX9530
Black		RT-702-BK-XX9530	MPS-702-BK-XX9530	MPX-702-BK-XX9530	MPY-702-BK-XX9530	MPZ-702-BK-XX9530
White		RT-702-WH-XX9530	MPS-702-WH-XX9530	MPX-702-WH-XX9530	MPY-702-WH-XX9530	MPZ-702-WH-XX9530

For 3000K Substitute XX with 30 | For 2700K Substitute XX with 27

## WIDE FLOOD

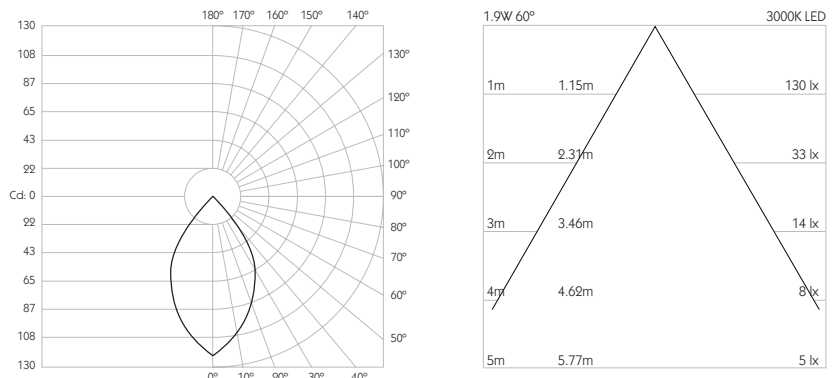


**Category** Interior use only IP20  
**Material** Machined Aluminium  
**Finish** Brushed Aluminium | Black | White | Custom  
**System** Monopoint | LV tracks  
**Lockable** Pan & Tilt  
**Accessories** Snoots  
**System Power** 1.9W  
**Module Output** 140lm  
**Absolute Output** 130lm  
**LOR** 93%  
**Colour Temperature** 3000K | 2700K | \*  
**CRI** Ra: 95    **TM-30** Rf: 93 Rg: 99  
**Optics** 60°  
**Gear Type** Dimmable options available  
**Weight** 100g  
**Stem Length** 360mm | Custom available upon request  
 \* Please enquire as to the availability of non-standard Colour Temperatures.



Pico S1 is a discreet 95CRI LED, mounted to a 360mm stem, other stem lengths are available on request. The spotlight comes as standard in white, black and brushed aluminium finishes, and has three site changeable optics for flexible distribution. Movement is aided with a low friction bearing rotation and constant torque tilt mechanism, lockable in both pan and tilt. The Precision Lighting Jack Plug system enables the luminaire to be easily disconnected and reconnected to all of Precision Lighting's systems, offering flexibility throughout the product's lifetime. The onboard 24V driver ensures overcurrent protection and is not polarity sensitive. Pico S1 is machined from aerospace grade 6063-T6 aluminium, delivering a lumen package of 140lm at 1.9W.

Product Photometry independently tested in accordance with LM-79



IP 20	95 CRI	CE	ETL US
LED	1.9W	24V	PART L
360°	180°	0.5m	Accessories Available

Accessory	Part Number	Part Number	Part Number	Part Number	Part Number	Part Number	Part Number	Part Number
Cable	BT-702-AL-XX9560	RT-702-AL-XX9560		MPS-702-AL-XX9560		MPX-702-AL-XX9560	MPY-702-AL-XX9560	MPZ-702-AL-XX9560
Basis Track								
ReTrac								
Eutrac								
Trimless Monopoint								
Power Monopoint								
Flat Monopoint								
Node Monopoint								
Surface Monopoint								
Finish		RT-702-BK-XX9560		MPS-702-BK-XX9560		MPX-702-BK-XX9560	MPY-702-BK-XX9560	MPZ-702-BK-XX9560
Finish		RT-702-WH-XX9560		MPS-702-WH-XX9560		MPX-702-WH-XX9560	MPY-702-WH-XX9560	MPZ-702-WH-XX9560

For 3000K Substitute XX with 30 | For 2700K Substitute XX with 27