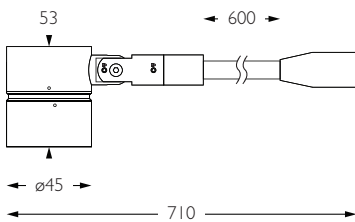


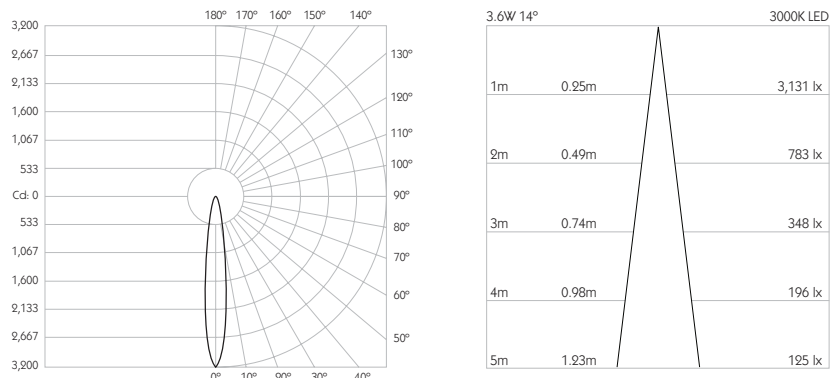


Category Interior use only IP20
Material Machined Aluminium
Finish Brushed Aluminium | Black | White | Custom
System Monopoint | LV tracks
Lockable Pan & Tilt
Accessories Snoots | Louvres | Lenses
System Power 3.6W
Module Output 305lm
Absolute Output 294lm
LOR 96%
Colour Temperature 3000K | 2700K | *
CRI Ra: 95 **TM-30** Rf: 93 Rg: 99
Optics 14°
Gear Type Dimmable options available
Weight 248g
Stem Length 600mm | Custom available upon request
 * Please enquire as to the availability of non-standard Colour Temperatures



Discus S11 is a compact 95CRI LED spotlight, mounted to a 600mm stem. The spotlight comes as standard in white, black and brushed aluminium finishes, and has three site changeable optics for flexible distribution. Movement is aided with a low friction bearing rotation and constant torque tilt mechanism, both lockable in pan and tilt. The Precision Lighting Jack Plug system enables the luminaire to be easily disconnected and reconnected to all of Precision Lighting's systems, offering flexibility throughout the product's lifetime. The onboard 24V driver ensures overcurrent protection and is not polarity sensitive. Discus S11 is machined from Aerospace grade 6063-T6 aluminium, delivering a lumen package of 305lm at 3.6W.

Product Photometry independently tested in accordance with LM-79



IP 20	95 CRI	CE	ETL US
LED	3.6W	24V	PART L
360°	180°	0.5m	Accessories Available

Mounting System	Part Number	Part Number	Part Number	Part Number	Part Number	Part Number	Part Number	Part Number
Cable	BT-783-AL-XX9514	RT-783-AL-XX9514		MPS-783-AL-XX9514		MPX-783-AL-XX9514	MPY-783-AL-XX9514	MPZ-783-AL-XX9514
Basis Track								
ReTrac								
Eutrac								
Trimless Monopoint								
Power Monopoint								
Flat Monopoint								
Node Monopoint								
Surface Monopoint								
Finish								
Brushed Aluminium								
Black								
White								

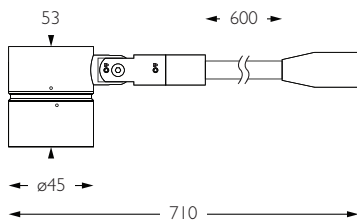
For 3000K Substitute XX with 30 | For 2700K Substitute XX with 27



Category Interior use only IP20
Material Machined Aluminium
Finish Brushed Aluminium | Black | White | Custom
System Monopoint | LV tracks
Lockable Pan & Tilt
Accessories Snoots | Louvres | Lenses
System Power 3.6W
Module Output 305lm
Absolute Output 277lm
LOR 91%
Colour Temperature 3000K | 2700K | *
CRI Ra: 95 **TM-30** Rf: 93 Rg: 99
Optics 20°
Gear Type Dimmable options available
Weight 248g
Stem Length 600mm | Custom available upon request

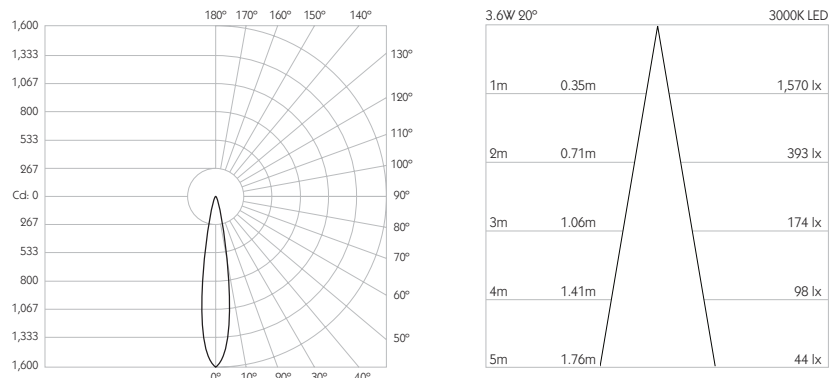


* Please enquire as to the availability of non-standard Colour Temperatures.

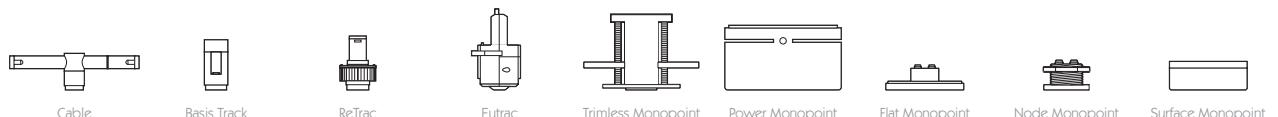


Discus S11 is a compact 95CRI LED spotlight, mounted to a 600mm stem. The spotlight comes as standard in white, black and brushed aluminium finishes, and has three site changeable optics for flexible distribution. Movement is aided with a low friction bearing rotation and constant torque tilt mechanism, both lockable in pan and tilt. The Precision Lighting Jack Plug system enables the luminaire to be easily disconnected and reconnected to all of Precision Lighting's systems, offering flexibility throughout the product's lifetime. The onboard 24V driver ensures overcurrent protection and is not polarity sensitive. Discus S11 is machined from Aerospace grade 6063-T6 aluminium, delivering a lumen package of 305lm at 3.6W.

Product Photometry independently tested in accordance with LM-79



IP 20	95 CRI	CE	ETL US
LED	3.6W	24V	PART L
360°	180°	0.5m	Accessories Available



Grey	BT-783-AL-XX9520	RT-783-AL-XX9520	MPS-783-AL-XX9520	MPX-783-AL-XX9520	MPY-783-AL-XX9520	MPZ-783-AL-XX9520
Black		RT-783-BK-XX9520	MPS-783-BK-XX9520	MPX-783-BK-XX9520	MPY-783-BK-XX9520	MPZ-783-BK-XX9520
White		RT-783-WH-XX9520	MPS-783-WH-XX9520	MPX-783-WH-XX9520	MPY-783-WH-XX9520	MPZ-783-WH-XX9520

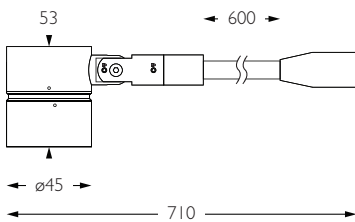
For 3000K Substitute XX with 30 | For 2700K Substitute XX with 27



Category Interior use only IP20
Material Machined Aluminium
Finish Brushed Aluminium | Black | White | Custom
System Monopoint | LV tracks
Lockable Pan & Tilt
Accessories Snoots | Louvres | Lenses
System Power 3.6W
Module Output 305lm
Absolute Output 266lm
LOR 87%
Colour Temperature 3000K | 2700K | *
CRI Ra: 95 **TM-30** Rf: 93 Rg: 99
Optics 30°
Gear Type Dimmable options available
Weight 248g
Stem Length 600mm | Custom available upon request

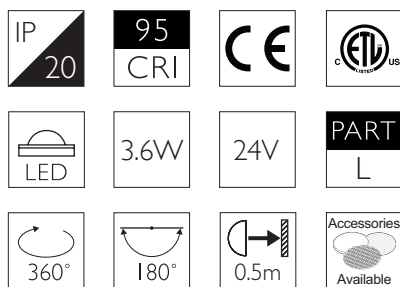
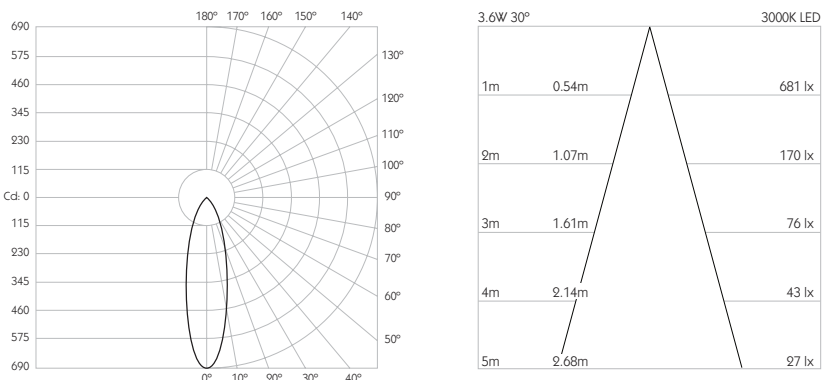


* Please enquire as to the availability of non-standard Colour Temperatures.



Discus S11 is a compact 95CRI LED spotlight, mounted to a 600mm stem. The spotlight comes as standard in white, black and brushed aluminium finishes, and has three site changeable optics for flexible distribution. Movement is aided with a low friction bearing rotation and constant torque tilt mechanism, both lockable in pan and tilt. The Precision Lighting Jack Plug system enables the luminaire to be easily disconnected and reconnected to all of Precision Lighting's systems, offering flexibility throughout the product's lifetime. The onboard 24V driver ensures overcurrent protection and is not polarity sensitive. Discus S11 is machined from Aerospace grade 6063-T6 aluminium, delivering a lumen package of 305lm at 3.6W.

Product Photometry independently tested in accordance with LM-79



Mounting System	BT-783-AL-XX9530	RT-783-AL-XX9530	MPS-783-AL-XX9530	MPX-783-AL-XX9530	MPY-783-AL-XX9530	MPZ-783-AL-XX9530
Cable						
Basis Track						
ReTrac						
Eutrac						
Trimless Monopoint						
Power Monopoint						
Flat Monopoint						
Node Monopoint						
Surface Monopoint						
Color						
Black						
White						

For 3000K Substitute XX with 30 | For 2700K Substitute XX with 27