

THE LUX COMPANY Dela HE Surface Downlight with DLM Flex



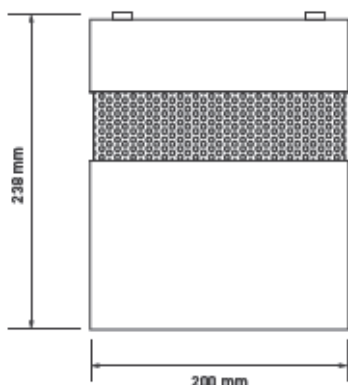
THE
LUX
COMPANY

DESCRIPTION



Surface mounted or pendant luminaire fitted with a highly specular reflector and designed for applications with restricted access or no ceiling void. Built around the Philips DLM Flex module and Xitanium driver for optimum performance and long life, it offers a range of lumen outputs, dimming options, a choice of accessories and colour combinations.

SPECIFICATIONS



| | |
|--------------------------------------|-------------------|
| Nominal weight | 3 kg |
| Mains voltage | 220 - 240 V |
| Mains frequency | 50 - 60 Hz |
| Ingress protection (front) | IP20 |
| Ingress protection (rear) | IP20 |
| Operating ambient temperature | -25°C to +35°C |
| Colour consistency - MacAdam Ellipse | 3 SDCM |
| Warranty | 5 years |
| Power factor | >0.9 |
| Colour rendering | R _a 80 |
| Beam angle | 43° |

SURFACE MOUNTED



PENDANT





PERFORMANCE DATA

| Colour Temp (K) | Luminaire Output (Llm) | Luminaire Power (W) | Luminaire Efficacy (Llm/W) | UGR | Model Ref |
|-----------------|------------------------|---------------------|----------------------------|------|-----------|
| 3000 | 1056 | 15.1 | 70.1 | 14.7 | HE001/XYZ |
| 3000 | 1758 | 25.1 | 70.1 | 16.4 | HE003/XYZ |
| 3000 | 2508 | 33.9 | 74.1 | 17.7 | HE005/XYZ |
| 3000 | 3434 | 48.2 | 71.3 | 18.8 | HE007/XYZ |
| 4000 | 1155 | 15.1 | 76.7 | 15.0 | HE002/XYZ |
| 4000 | 1924 | 25.2 | 76.4 | 16.8 | HE004/XYZ |
| 4000 | 2737 | 34.0 | 80.6 | 18.0 | HE006/XYZ |
| 4000 | 3749 | 48.3 | 77.7 | 19.1 | HE008/XYZ |

LIFE

| Model Ref | 25°C Ambient Temperature | | |
|-----------|--------------------------|-----------|-----------|
| | L90 / B10 | L80 / B10 | L70 / B10 |
| HE001/XYZ | 20,000 h | 43,000 h | >60,000 h |
| HE002/XYZ | 20,000 h | 43,000 h | >60,000 h |
| HE003/XYZ | 20,000 h | 43,000 h | >60,000 h |
| HE004/XYZ | 20,000 h | 43,000 h | >60,000 h |
| HE005/XYZ | 20,000 h | 42,000 h | >60,000 h |
| HE006/XYZ | 20,000 h | 42,000 h | >60,000 h |
| HE007/XYZ | 17,000 h | 37,000 h | 59,000 h |
| HE008/XYZ | 17,000 h | 37,000 h | 59,000 h |

"L VALUE" = % of initial lumens maintained after specified time

"B VALUE" = % of fittings that will have depreciated below the L value after specified time

EXAMPLE - 50,000 hours L70 / B50

"L70" = 70% of initial lumens maintained after 50,000 hours

"B50" = 50% of fittings will have depreciated below 70% of the initial lumens after 50,000 hours

OR 50% of fittings will have maintained 70% of the initial lumens after 50,000 hours



OPTIONS



T+DALI
Touch dimming / DALI



/SUS
2 m suspension kit in white

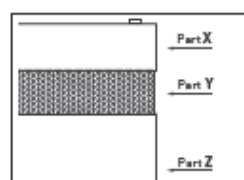


/SUS
2 m suspension kit in grey



/SUS
2 m suspension kit in black

FINISHES



MIX OR MATCH
Finishes may be mixed or matched as required



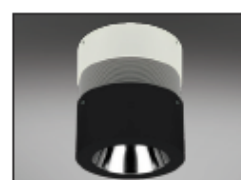
/WWW
White finish



/GGG
Grey finish



/BBB
Black finish



Example: /WGB
White, grey, black

ACCESSORIES (FACTORY FIT ONLY)



TA310/FROST
Frosted vertical halo



TA310/BLUE
Blue vertical halo



TA340
Clear glass



TA341
Centre etched glass



TA342
Fully etched glass



TA343
Clear polycarbonate



TA344
Opal polycarbonate



Coloured body
Specify any RAL colour



Reflector finish
Please speak to Sales



Plug and socket systems
To your specification



Reduced outputs
To your specification



Product variations
Other specifications available on request