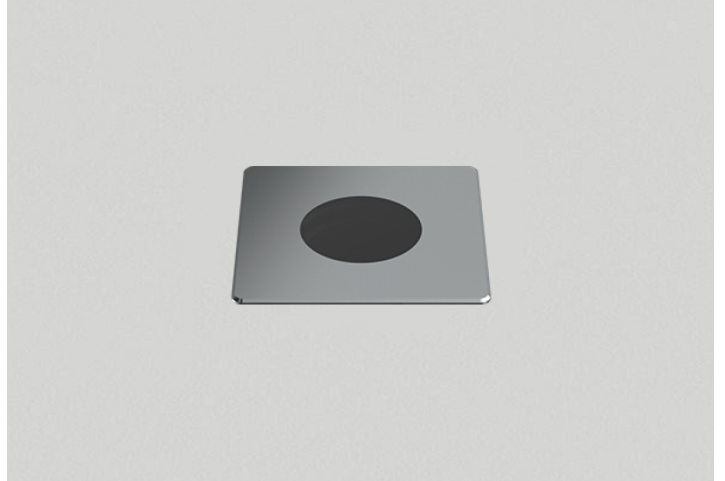


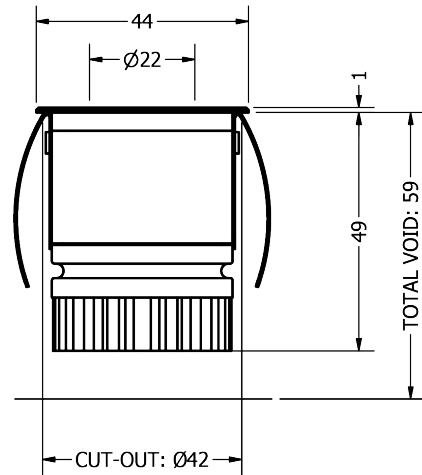
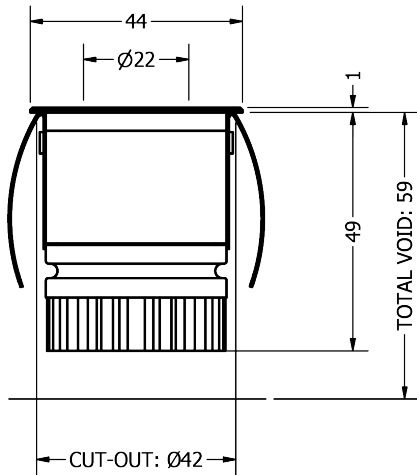
PHOS
ENGINEERING LIGHT

PANO MINI DARKLIGHT SQUARE SPRING

STANDARD



1 & 3W



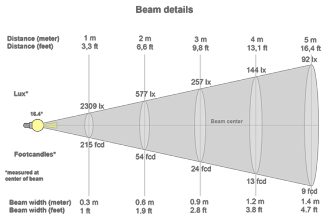
TECHNICAL SPECIFICATIONS

CCT	2700K					
Wattage	1W			3W		
BeamAngle	15°	25°	30°	15°	25°	30°
Luminaire Lumens (lm)	93	85	51	204	195	121
Circuit Watts (c/W)	2.6	2.6	2.6	5.6	5.7	5.6
LuminaireEfficacy (l/cW)	35	32	20	36	34	21
Luminance (Cd)	661	396	175	1632	953	423
Light Source (Lm/W)	146	146	146	117	117	117
Engine (Lm/W)	49	49	49	68	68	68
Forward Volatage (Vf)	2.78	2.78	2.78	2.97	2.97	2.97
Current (mA)	350	350	350	1050	1050	1050

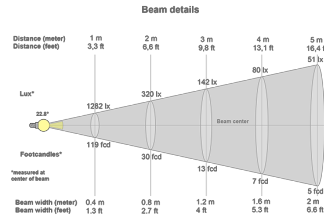
CCT	3000K					
Wattage	1W			3W		
BeamAngle	15°	25°	30°	15°	25°	30°
Luminaire Lumens (lm)	99	92	62	251	232	156
Circuit Watts (c/W)	2.6	2.6	2.6	5.6	5.5	5.5
LuminaireEfficacy (l/cW)	38	35	24	45	42	28
Luminance (Cd)	822	456	224	2129	1175	570
Light Source (Lm/W)	146	146	146	117	117	117
Engine (Lm/W)	55	55	55	73	73	73
Forward Volatage (Vf)	2.78	2.78	2.78	2.97	2.97	2.97
Current (mA)	350	350	350	1050	1050	1050

Binning	2 step MacAdams
CRI	90+
TM-30-15	Rf90.37 - Rg99.71
Lumen Maintenance	LM80
Lifetime	50,000 hours
Dimming	Mains Dim, DALI, CASAMBI, 0-10V, Non-dim

LIGHT CONES

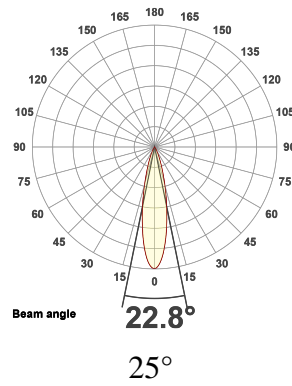
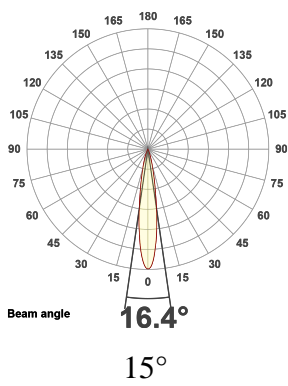


15°



25°

POLAR CURVES



PART CODE BUILDER

Example Code: MI-PD-SQ-S-WT-STD1-27-90-15-350

Family	Variant	Bezel Finish	Engine	Power	CCT	CRI	Beam Angle	Driver Current
MI	PD-SQ-S	WT	STD	1W	27K	90	15°	350mA
		BT		3W	30K		25°	1050mA
		*C					30°	

REGENERATION FOR GENERATIONS



View ReGen Doc



TAKE

Sourcing material locally



MAKE

Responsible manufacture



WASTE

Lifetime duty of care



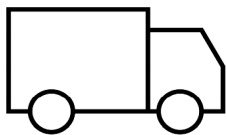
IRYS TM66 RESULTS

Category	Points Scored	MAX Possible Points	Assessment
Product Design	108.0	134.0	3.2
Manufacturing	35.0	46.5	3.0
Materials	11.0	24.0	1.8
Ecosystem	36.0	43.0	3.3
Overall Performance	190.0	247.5	2.9
2.5 to 4.0	Excellent circularity		

TM65 Available upon request

Embodied carbon in building services

WE ENCOURAGE ALL FIXTURES TO BE RETURNED TO US SO WE CAN REGEN OR RECYCLE.



If a product has failed or has become EOL, we can arrange collection of the interchangeable light engines and associated drivers. Once received, we will review the engine to see if it can be **ReGenerated** or **recycled**.



If we can **ReGenerate** the light engine, we will only need to replace the faulty part of the fitting, which can then be restored to life, utilising all of our original optics and bezels.



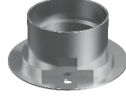
If the unit is beyond the point of repair, we will ensure the raw material is always fully recycled. We encourage all fixtures to be returned to us so we can **ReGen** or **recycle**.

ACCESSORIES



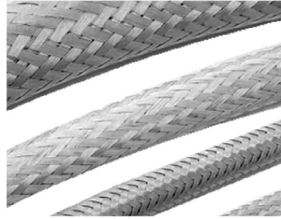
Mini Installation Tube

ACC-MI-TUBE



Mini Collar Tube

ACCS-MI-COLLARTUBE



Exterior Cable Sleeve

ACCS-E-CABLESLEEVE-5MM

INSERTS



Elliptical Insert

NOT available for square or eyelid versions

EL



Asymmetric Insert

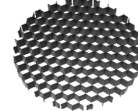
NOT available for square or eyelid versions

AS



Softening Insert

SL



Honeycomb Insert

NOT available for puck

HC



Halfmoon Insert

NOT available for square or eyelid versions

HM



Colour Change Insert

CCT: 18K

CCT: 22K

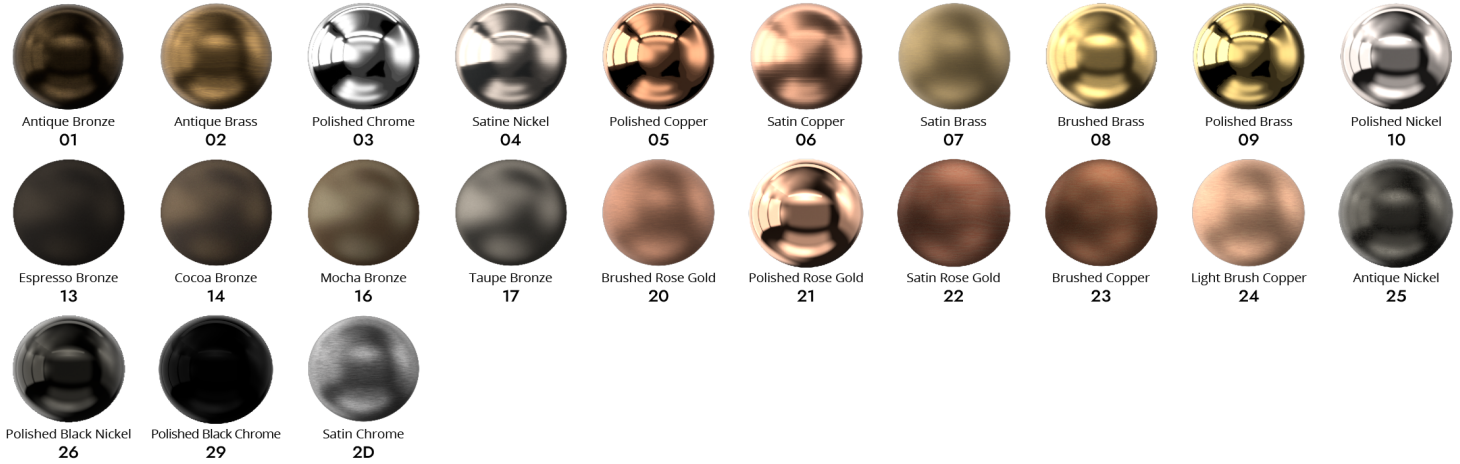
CCT: 24K

CCT: 25K

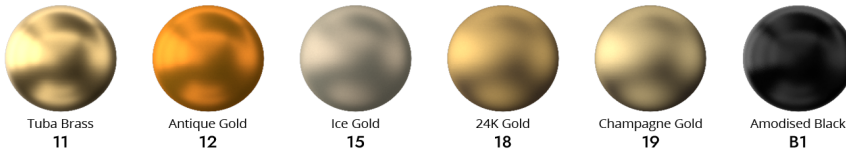
FINISHES

Every element of your light can be finished in any of the options below, or RAL colour:

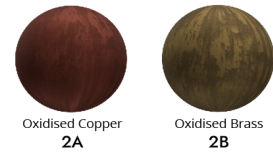
PLATED (Interior ONLY)



ANODISED (Interior ONLY)



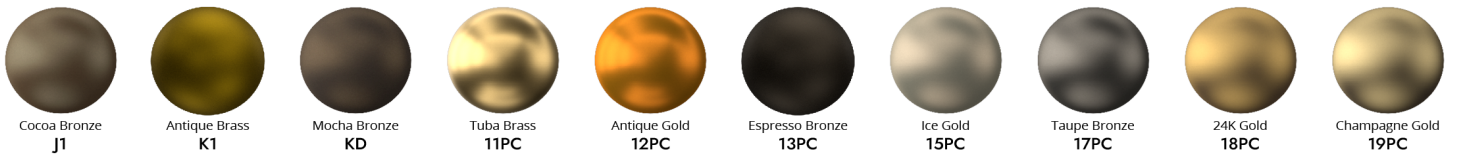
SPECIALITY PLATED (Interior ONLY)



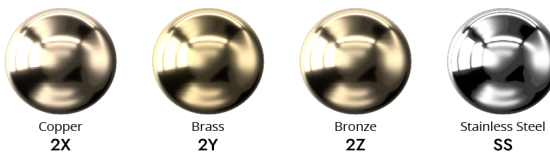
POWDER COAT (Interior & Exterior)



METAL POWDER COAT (Interior & Exterior)



MARINE GRADE (Interior, Exterior & Harsh Environment)



SPECIALITY POWDER COAT (Interior & Exterior)

