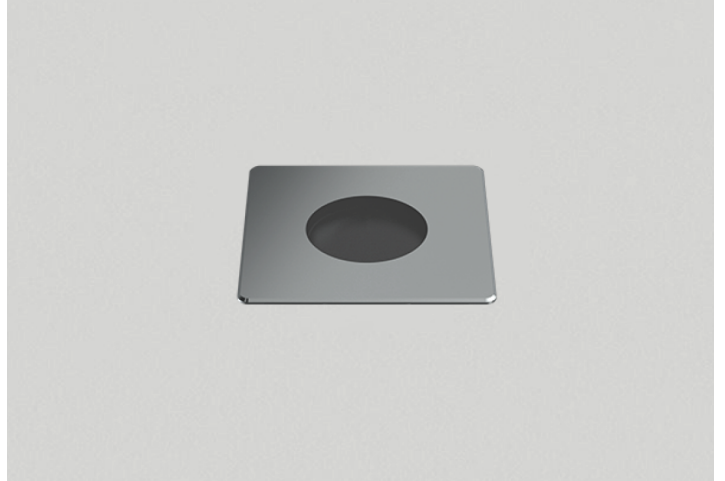


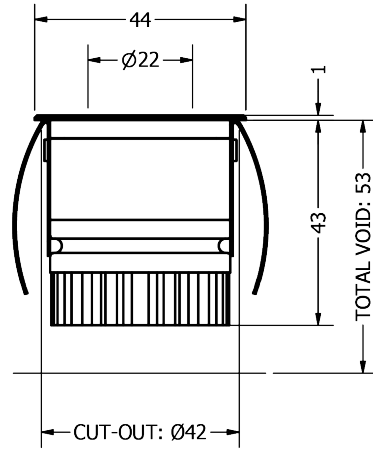
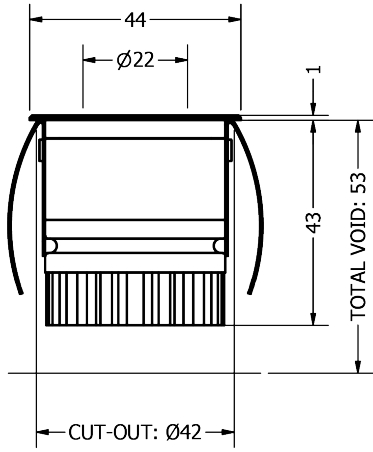
PHOS  
ENGINEERING LIGHT

## PANO MINI SQUARE SPRING

STANDARD



1 & 3W



## TECHNICAL SPECIFICATIONS

CCT	2700K					
Wattage	1W			3W		
BeamAngle	15°	25°	35°	15°	25°	35°
Luminaire Lumens (lm)	99	98	82	242	240	196
Circuit Watts (c/W)	2.6	2.7	2.6	5.6	5.6	5.6
LuminaireEfficacy (l/cW)	38	37	31	43	43	35
Luminance (Cd)	736	424	203	1775	1045	488
Light Source (Lm/W)	146	146	146	117	117	117
Engine (Lm/W)	49	49	49	68	68	68
Forward Volatage (Vf)	2.78	2.78	2.78	2.97	2.97	2.97
Current (mA)	350	350	350	1050	1050	1050

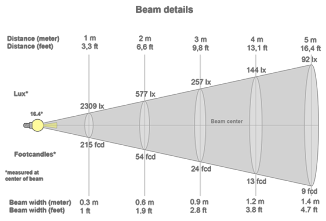
  

CCT	3000K					
Wattage	1W			3W		
BeamAngle	15°	25°	35°	15°	25°	35°
Luminaire Lumens (lm)	114	114	94	287	279	230
Circuit Watts (c/W)	2.6	2.6	2.6	5.6	5.6	5.5
LuminaireEfficacy (l/cW)	44	44	36	52	50	42
Luminance (Cd)	896	500	244	2314	1285	607
Light Source (Lm/W)	146	146	146	117	117	117
Engine (Lm/W)	55	55	55	73	73	73
Forward Volatage (Vf)	2.78	2.78	2.78	2.97	2.97	2.97
Current (mA)	350	350	350	1050	1050	1050

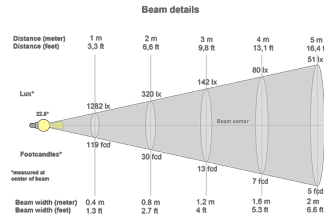
  

Binning	2 step MacAdams
CRI	90+
TM-30-15	Rf90.07 - Rg99.91
Lumen Maintenance	LM80
Lifetime	50,000 hours
Dimming	Mains Dim, DALI, CASAMBI, 0-10V, Non-dim

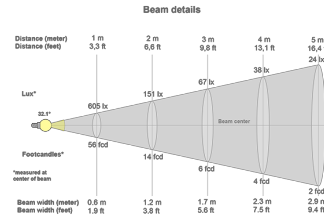
## LIGHT CONES



15°

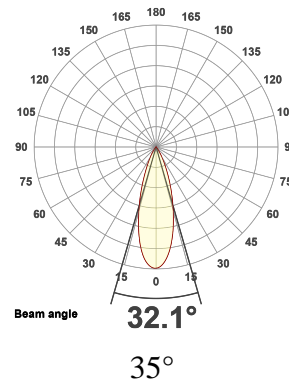
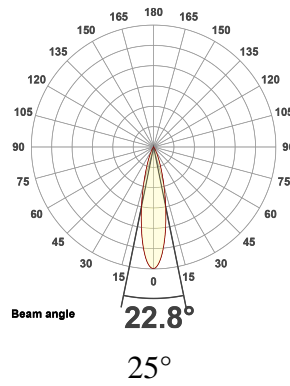
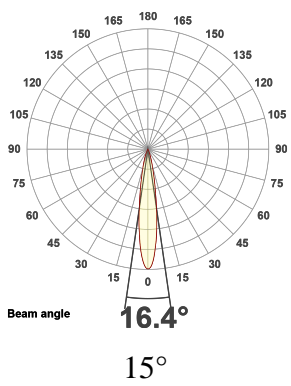


25°



35°

## POLAR CURVES



## PART CODE BUILDER

Example Code: MI-P-SQ-S-WT-STD1-27-90-15-350

Family	Variant	Bezel Finish	Engine	Power	CCT	CRI	Beam Angle	Driver Current
MI	P-SQ-S	WT	STD	1W	27K	90	15°	350mA
		BT		3W	30K		25°	1050mA
		*C					35°	

# REGENERATION FOR GENERATIONS



View ReGen Doc



**TAKE**

Sourcing material locally



**MAKE**

Responsible manufacture



**WASTE**

Lifetime duty of care



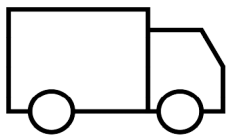
## IRYS TM66 RESULTS

Category	Points Scored	MAX Possible Points	Assessment
Product Design	108.0	134.0	3.2
Manufacturing	35.0	46.5	3.0
Materials	11.0	24.0	1.8
Ecosystem	36.0	43.0	3.3
Overall Performance	190.0	247.5	2.9
2.5 to 4.0	Excellent circularity		

TM65 Available upon request

*Embodied carbon in building services*

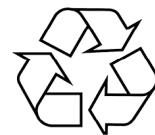
WE ENCOURAGE ALL FIXTURES TO BE RETURNED TO US SO WE CAN REGEN OR RECYCLE.



If a product has failed or has become EOL, we can arrange collection of the interchangeable light engines and associated drivers. Once received, we will review the engine to see if it can be **ReGenerated** or **recycled**.



If we can **ReGenerate** the light engine, we will only need to replace the faulty part of the fitting, which can then be restored to life, utilising all of our original optics and bezels.



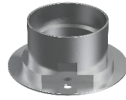
If the unit is beyond the point of repair, we will ensure the raw material is always fully recycled. We encourage all fixtures to be returned to us so we can **ReGen** or **recycle**.

**ACCESSORIES**



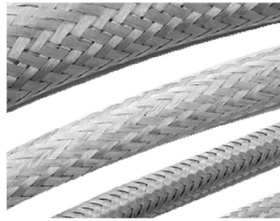
Mini Installation Tube

ACC-MI-TUBE



Mini Collar Tube

ACCS-MI-COLLARTUBE



Exterior Cable Sleeve

ACCS-E-CABLESLEEVE-5MM

**INSERTS**



Elliptical Insert

*NOT available for square or eyelid versions*

EL



Asymmetric Insert

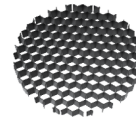
*NOT available for square or eyelid versions*

AS



Softening Insert

SL



Honeycomb Insert

*NOT available for puck*

HC



Halfmoon Insert

*NOT available for square or eyelid versions*

HM



Colour Change Insert

CCT: 18K

CCT: 22K

CCT: 24K

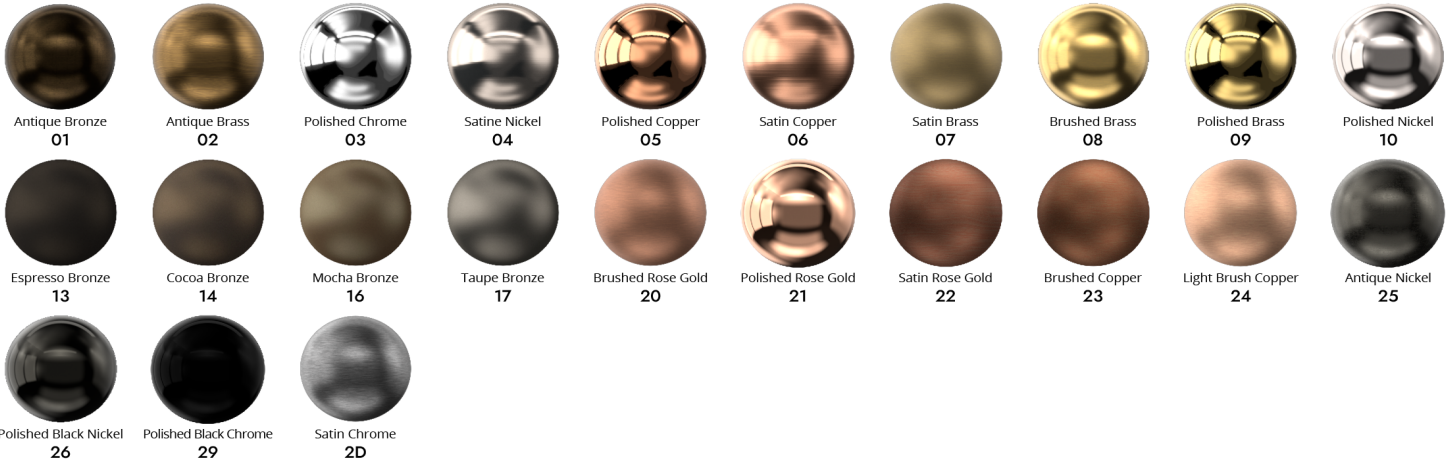
CCT: 25K



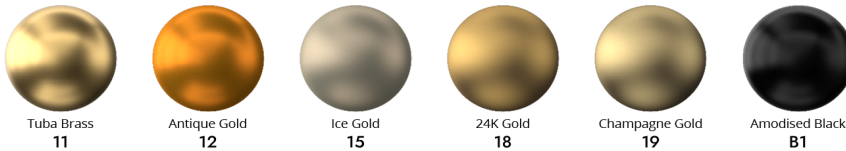
## FINISHES

Every element of your light can be finished in any of the options below, or RAL colour:

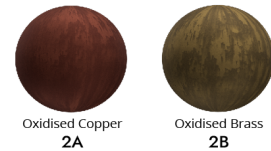
### PLATED (Interior ONLY)



### ANODISED (Interior ONLY)



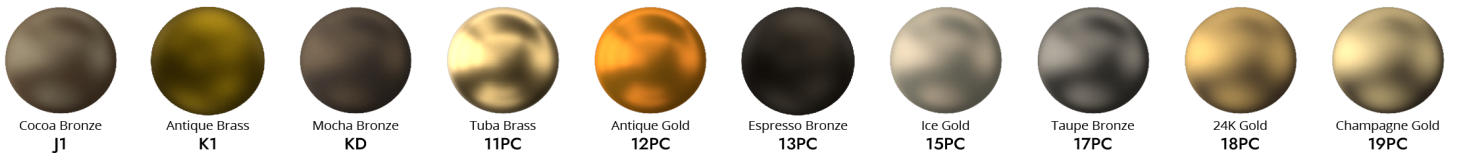
### SPECIALITY PLATED (Interior ONLY)



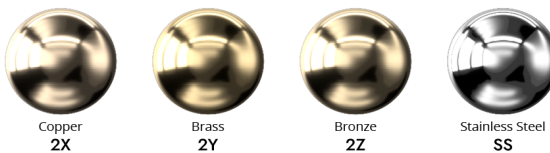
### POWDER COAT (Interior & Exterior)



### METAL POWDER COAT (Interior & Exterior)



### MARINE GRADE (Interior, Exterior & Harsh Environment)



### SPECIALITY POWDER COAT (Interior & Exterior)

