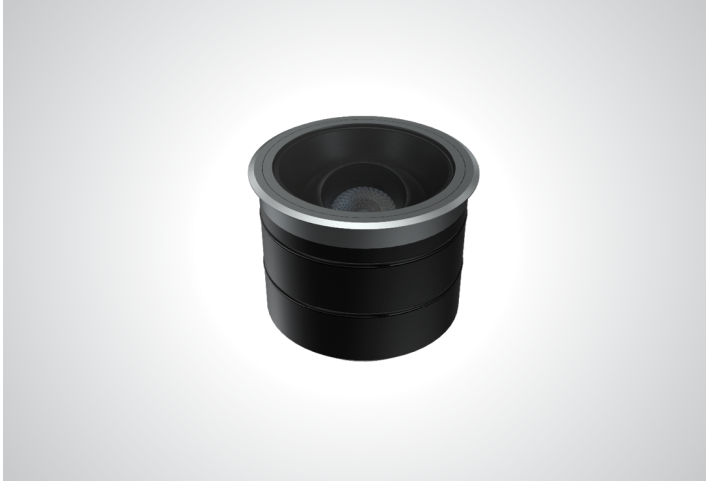




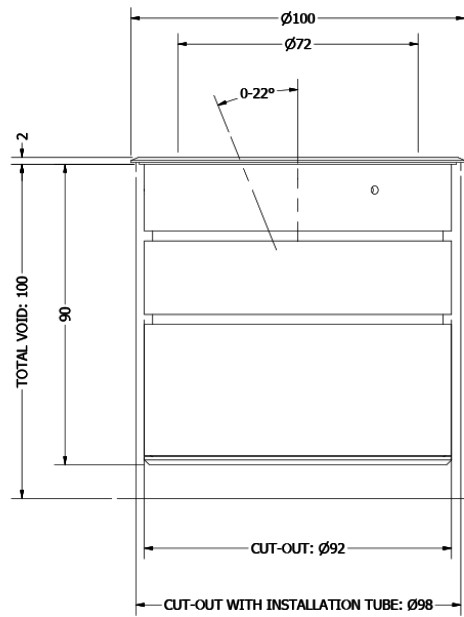
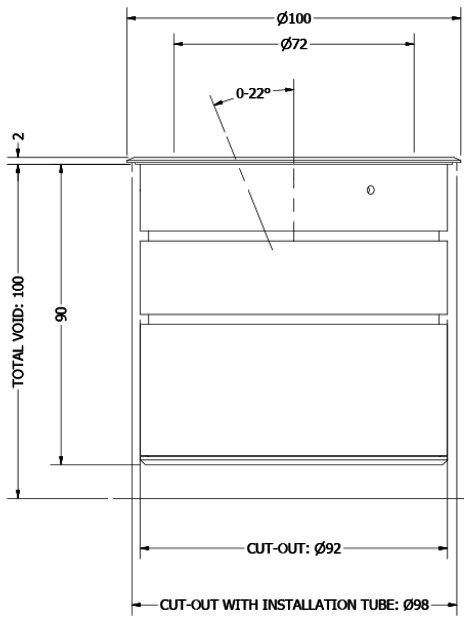
PHOS  
ENGINEERING LIGHT

MIDI PANO ADJUSTABLE

STANDARD



4 & 9W



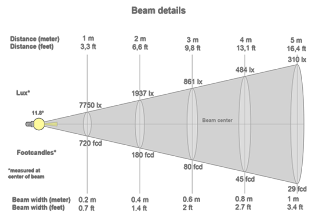
## TECHNICAL SPECIFICATIONS

CCT	2700K							
Wattage	4W				9W			
BeamAngle	10°	25°	35°	50°	10°	25°	35°	50°
Luminaire Lumens (lm)	308	259	260	220	504	420	421	365
Circuit Watts (c/W)	5.9	5.9	5.9	5.9	10.5	10.5	10.4	10.5
LuminaireEfficacy (l/cW)	52	44	44	37	48	40	40	35
Luminance (Cd)	5157	1199	662	310	8698	1963	1090	514
Light Source (Lm/W)	95	95	95	95	80	80	80	80
Engine (Lm/W)	64	64	64	64	59	59	59	59
Forward Volatage (Vf)	11.78	11.78	11.78	11.78	12.36	12.36	12.36	12.36
Current (mA)	350	350	350	350	700	700	700	700

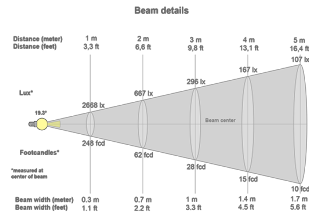
CCT	3000K							
Wattage	4W				9W			
BeamAngle	10°	25°	35°	50°	10°	25°	35°	50°
Luminaire Lumens (lm)	355	298	293	252	541	441	458	423
Circuit Watts (c/W)	5.9	5.9	5.9	5.9	10.5	10.5	10.5	10.4
LuminaireEfficacy (l/cW)	60	51	50	43	52	42	44	41
Luminance (Cd)	5255	1404	804	368	6409	2720	1964	627
Light Source (Lm/W)	95	95	95	95	80	80	80	80
Engine (Lm/W)	76	76	76	76	71	71	71	71
Forward Volatage (Vf)	11.78	11.78	11.78	11.78	12.36	12.36	12.36	12.36
Current (mA)	350	350	350	350	700	700	700	700

Binning	2 step MacAdams
CRI	90+
TM-30-15	Rf88.39 - Rg102.02
Lumen Maintenance	LM80
Lifetime	50,000 hours
Dimming	Mains Dim, DALI, CASAMBI, 0-10V, Non-dim

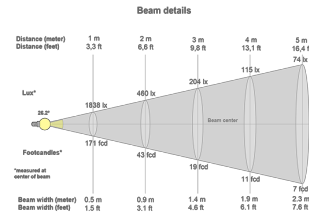
## LIGHT CONES



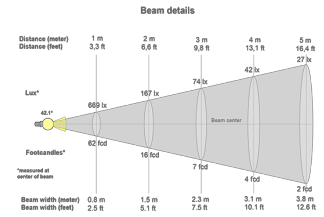
10°



25°

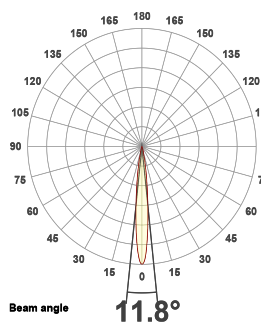


35°

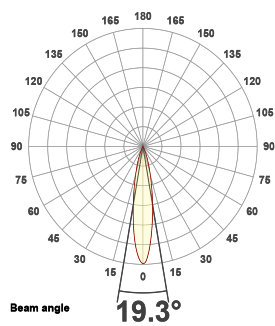


50°

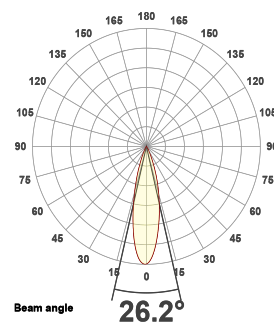
## POLAR CURVES



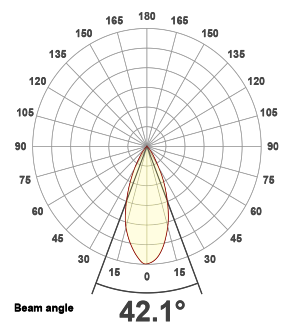
10°



25°



35°



50°

## PART CODE BUILDER

Example Code: MD-PA-WT-STD4-27-90-10-350

Family	Variant	Bezel Finish	Engine	Power	CCT	CRI	Beam Angle	Driver Current
MD	PA	WT	STD	4W	27K	90	10°	350mA
		BT		9W	30K		25°	700mA
		*C					35°	
							50°	

# REGENERATION FOR GENERATIONS



View ReGen Doc



**TAKE**

Sourcing material locally



**MAKE**

Responsible manufacture



**WASTE**

Lifetime duty of care



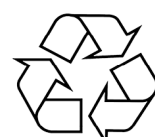
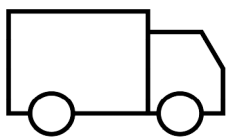
## PANO MIDI TM66 RESULTS

Category	Points Scored	MAX Possible Points	Assessment
Product Design	126.0	134.0	3.8
Manufacturing	35.0	46.5	3.0
Materials	11.0	24.0	1.8
Ecosystem	36.0	43.0	3.3
Overall Performance	208.0	247.5	3.0
2.5 to 4.0	Excellent circularity		

### TM65 Available upon request

*Embodied carbon in building services*

**WE ENCOURAGE ALL FIXTURES TO BE RETURNED TO US SO WE CAN REGEN OR RECYCLE.**



If a product has failed or has become EOL, we can arrange collection of the interchangeable light engines and associated drivers. Once received, we will review the engine to see if it can be **ReGenerated** or **recycled**.

If we can **ReGenerate** the light engine, we will only need to replace the faulty part of the fitting, which can then be restored to life, utilising all of our original optics and bezels.

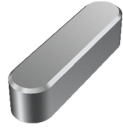
If the unit is beyond the point of repair, we will ensure the raw material is always fully recycled. We encourage all fixtures to be returned to us so we can **ReGen** or **recycle**.

**ACCESSORIES**



Commissioning Tool

ACCS-TOOL-M-BAFFLE



Pano Bezel Tool

ACCS-TOOL-MAXI-BEZ



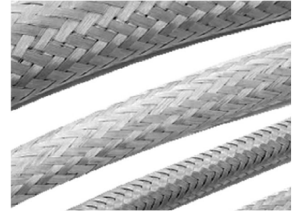
Pano Midi Adj Installation Tube

ACC-MX-PA-TUBE



Pano Midi Adj Collar Tube

ACCS-MX-PA-COLLARTUBE



Exterior Cable Sleeve

ACCS-E-CABLESLEEVE-5MM

**INSERTS**



Softening Insert Recessed

ACCS-RECESSED-SOFT



Softening Insert Flush

ACCS-FLUSH-SOFT



Asymmetric Insert Recessed

ACCS-RECESSED-ASYM



Asymmetric Insert Flush

ACCS-FLUSH-ASYM



Elliptical Insert Recessed

ACCS-RECESSED-10X60ELLIPTICAL



Elliptical Insert Flush

ACCS-FLUSH-10X60ELLIPTICAL



Honeycomb Recessed

ACCS-RECESSED-HCOMB



Honeycomb Flush

ACCS-FLUSH-HCOMB



Colour Change Insert Recessed

ACCS-RECESSED-FILTER18K  
ACCS-RECESSED-FILTER22K  
ACCS-RECESSED-FILTER24K  
ACCS-RECESSED-FILTER25K



Colour Change Insert Flush

ACCS-FLUSH-FILTER18K  
ACCS-FLUSH-FILTER22K  
ACCS-FLUSH-FILTER24K  
ACCS-FLUSH-FILTER25K



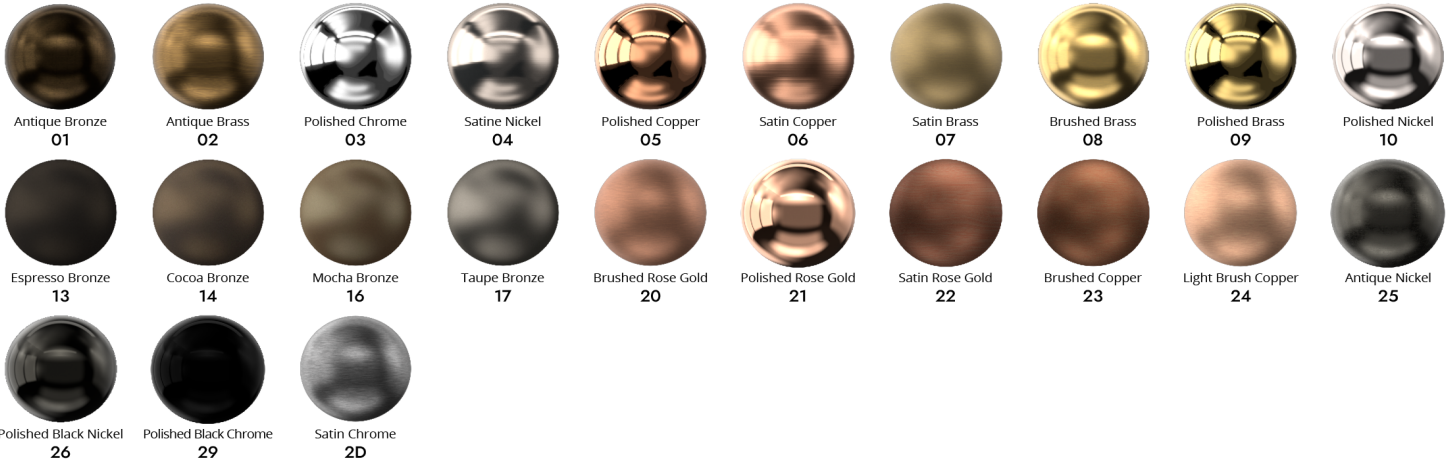
Halfmoo Insert

ACCS-MX-PA-HM

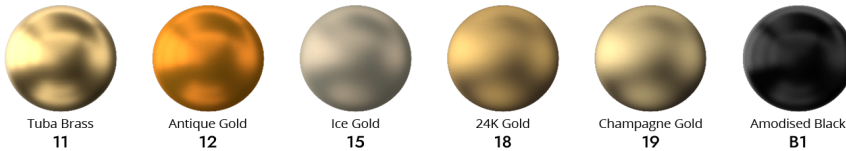
## FINISHES

Every element of your light can be finished in any of the options below, or RAL colour:

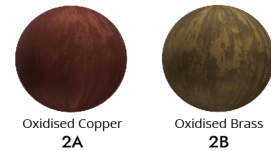
### PLATED (Interior ONLY)



### ANODISED (Interior ONLY)



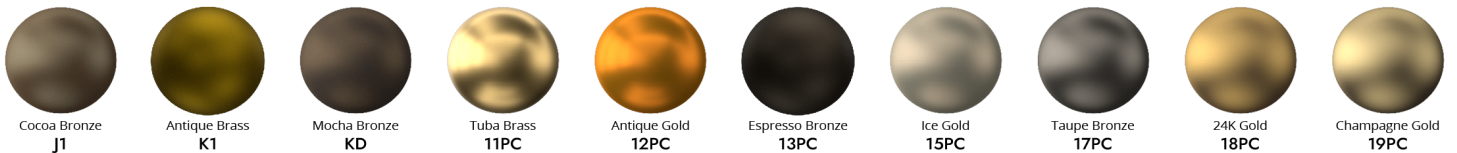
### SPECIALITY PLATED (Interior ONLY)



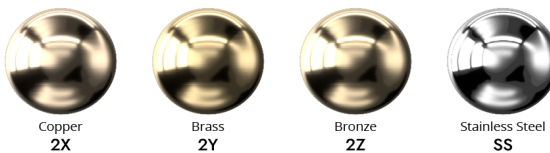
### POWDER COAT (Interior & Exterior)



### METAL POWDER COAT (Interior & Exterior)



### MARINE GRADE (Interior, Exterior & Harsh Environment)



### SPECIALITY POWDER COAT (Interior & Exterior)

