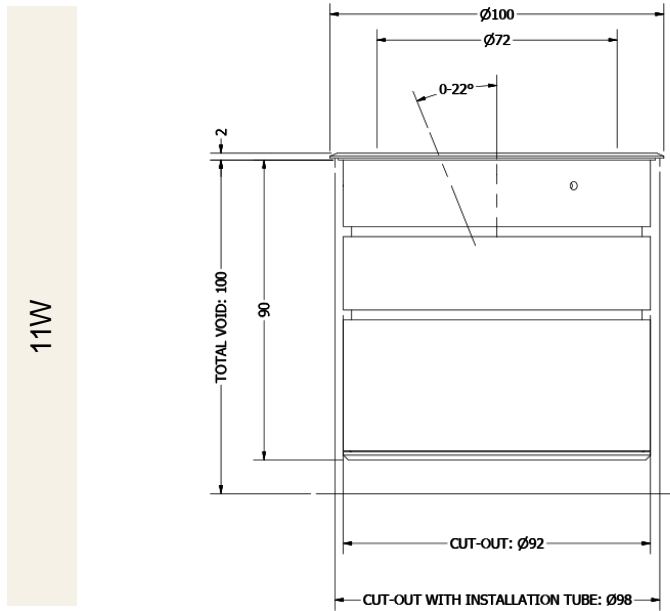
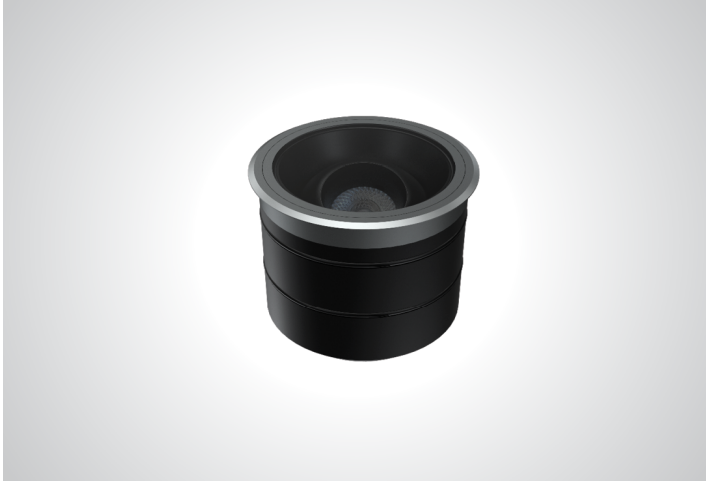




PHOS
ENGINEERING LIGHT

MIDI PANO ADJUSTABLE

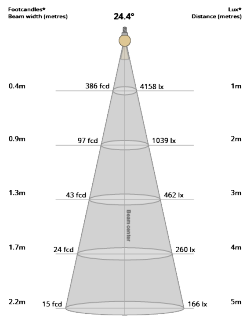
PART L TECHNOLOGY



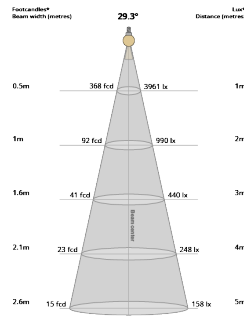
TECHNICAL SPECIFICATIONS

CCT	2700K			
Wattage	11W			
BeamAngle	25°	30°	35°	45°
Luminaire Lumens (lm)	1199	1186	1087	1302
Circuit Watts (c/W)	12.4	12.3	12.3	12.4
LuminaireEfficacy (l/cW)	97	96	88	105
Luminace (Cd)	4114	3904	2631	1950
Light Source (Lm/W)	180	180	180	180
Engine (Lm/W)	140	140	140	140
Forward Volatage (Vf)	31.6	31.6	31.6	31.6
Current (mA)	350	350	350	350
CCT	3000K			
Wattage	11W			
BeamAngle	25°	30°	35°	45°
Luminaire Lumens (lm)	1224	1210	1110	1399
Circuit Watts (c/W)	12.3	12.3	12.3	12.3
LuminaireEfficacy (l/cW)	99	98	90	114
Luminace (Cd)	4158	3961	2601	2026
Light Source (Lm/W)	178	178	178	178
Engine (Lm/W)	126	126	126	126
Forward Volatage (Vf)	31.6	31.6	31.6	31.6
Current (mA)	350	350	350	350
Binning	2 step MacAdams			
CRI	90+			
TM-30-15	Rf92 - Rg99.8			
Lumen Maintenance	LM80			
Lifetime	50,000 hours			
Dimming				

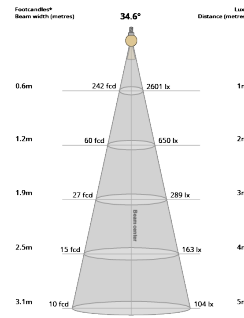
LIGHT CONES



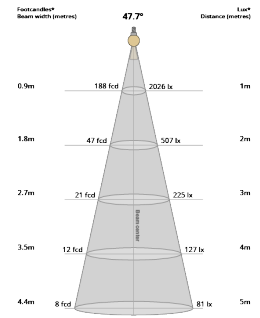
25°



30°

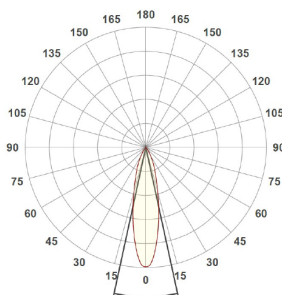


35°



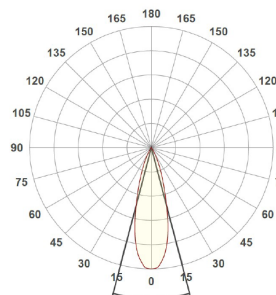
45°

POLAR CURVES



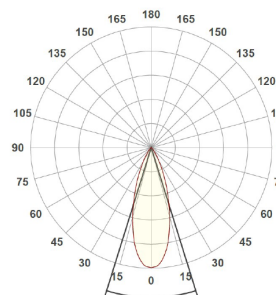
24.4°

25°



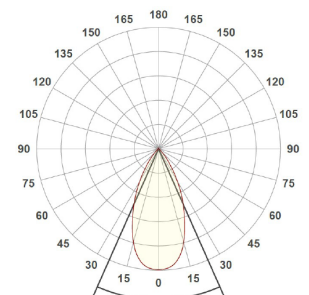
29.3°

30°



34.6°

35°



47.7°

45°

PART CODE BUILDER

Example Code: MD-PA-WT-PLT11-27-90-25-350

Family	Variant	Bezel Finish	Engine	Power	CCT	CRI	Beam Angle	Driver Current
MD	PA	WT	PLT	11W	27K	90	25°	350mA
		BT			30K		30°	
		*C					35°	
							45°	

REGENERATION FOR GENERATIONS



View ReGen Doc



TAKE
Sourcing material locally



MAKE
Responsible manufacture



WASTE
Lifetime duty of care



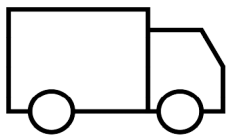
PANO MIDI TM66 RESULTS

Category	Points Scored	MAX Possible Points	Assessment
Product Design	126.0	134.0	3.8
Manufacturing	35.0	46.5	3.0
Materials	11.0	24.0	1.8
Ecosystem	36.0	43.0	3.3
Overall Performance	208.0	247.5	3.0
2.5 to 4.0	Excellent circularity		

TM65 Available upon request

Embodied carbon in building services

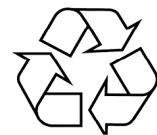
WE ENCOURAGE ALL FIXTURES TO BE RETURNED TO US SO WE CAN REGEN OR RECYCLE.



If a product has failed or has become EOL, we can arrange collection of the interchangeable light engines and associated drivers. Once received, we will review the engine to see if it can be **ReGenerated** or **recycled**.



If we can **ReGenerate** the light engine, we will only need to replace the faulty part of the fitting, which can then be restored to life, utilising all of our original optics and bezels.



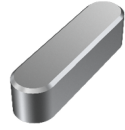
If the unit is beyond the point of repair, we will ensure the raw material is always fully recycled. We encourage all fixtures to be returned to us so we can **ReGen** or **recycle**.

ACCESSORIES



Commissioning Tool

ACCS-TOOL-M-BAFFLE



Pano Bezel Tool

ACCS-TOOL-MAXI-BEZ



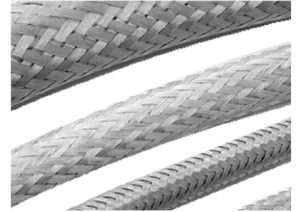
Pano Midi Adj Installation Tube

ACC-MX-PA-TUBE



Pano Midi Adj Collar Tube

ACCS-MX-PA-COLLARTUBE



Exterior Cable Sleeve

ACCS-E-CABLESLEEVE-5MM

INSERTS



Softening Insert Recessed

ACCS-RECESSED-SOFT



Softening Insert Flush

ACCS-FLUSH-SOFT



Asymmetric Insert Recessed

ACCS-RECESSED-ASYM



Asymmetric Insert Flush

ACCS-FLUSH-ASYM



Elliptical Insert Recessed

ACCS-RECESSED-10X60ELLIPTICAL



Elliptical Insert Flush

ACCS-FLUSH-10X60ELLIPTICAL



Honeycomb Recessed

ACCS-RECESSED-HCOMB



Honeycomb Flush

ACCS-FLUSH-HCOMB



Colour Change Insert Recessed

ACCS-RECESSED-FILTER18K
ACCS-RECESSED-FILTER22K
ACCS-RECESSED-FILTER24K
ACCS-RECESSED-FILTER25K



Colour Change Insert Flush

ACCS-FLUSH-FILTER18K
ACCS-FLUSH-FILTER22K
ACCS-FLUSH-FILTER24K
ACCS-FLUSH-FILTER25K



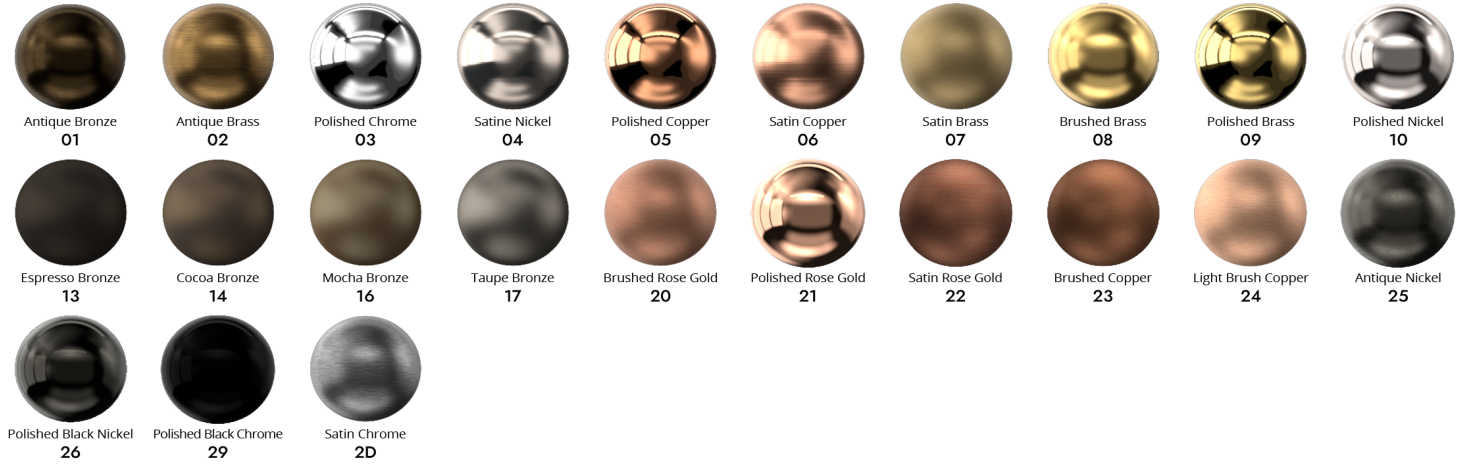
Halfmoo Insert

ACCS-MX-PA-HM

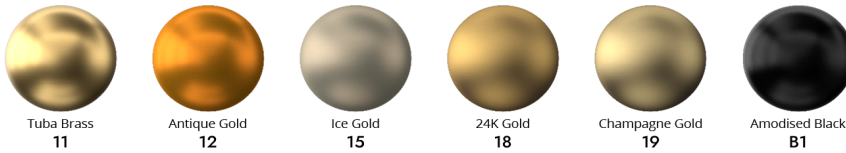
FINISHES

Every element of your light can be finished in any of the options below, or RAL colour:

PLATED (Interior ONLY)



ANODISED (Interior ONLY)



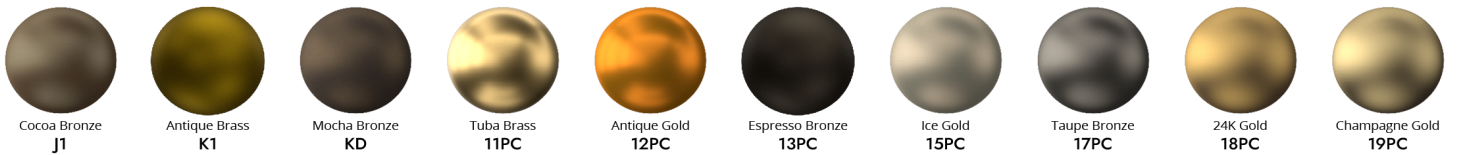
SPECIALITY PLATED (Interior ONLY)



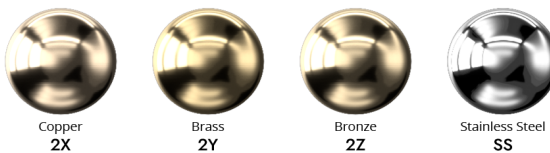
POWDER COAT (Interior & Exterior)



METAL POWDER COAT (Interior & Exterior)



MARINE GRADE (Interior, Exterior & Harsh Environment)



SPECIALITY POWDER COAT (Interior & Exterior)

