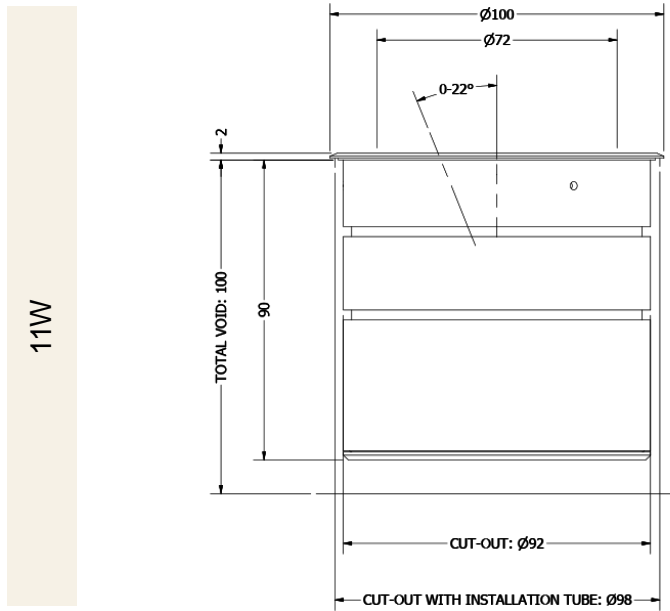
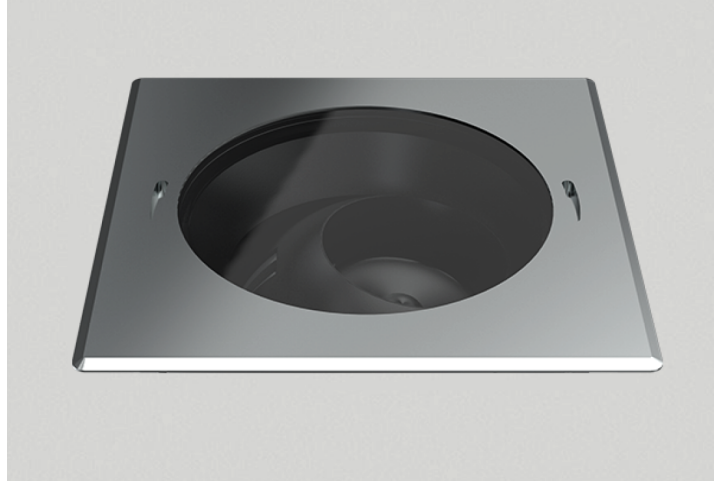




PHOS  
ENGINEERING LIGHT

## MIDI PANO ADJUSTABLE SQUARE

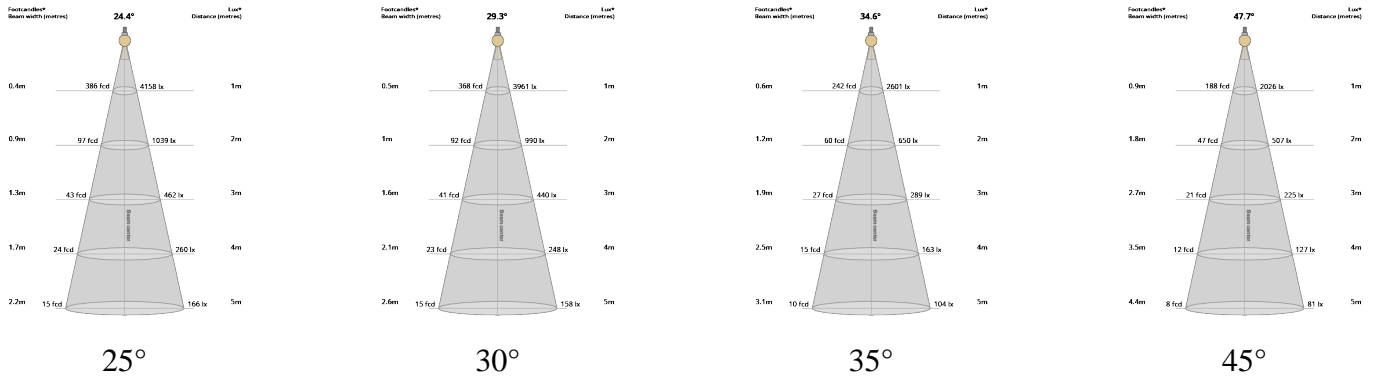
PART L TECHNOLOGY



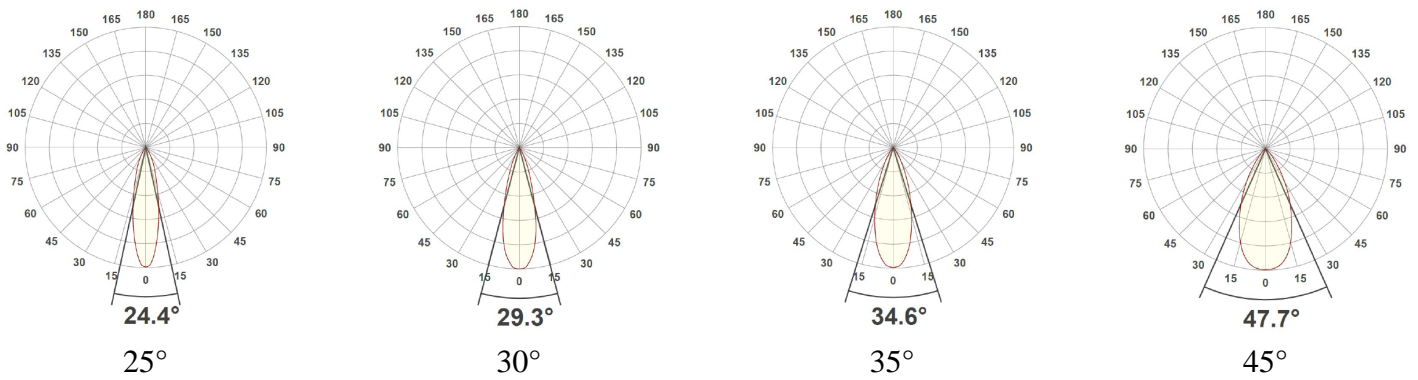
## TECHNICAL SPECIFICATIONS

<b>CCT</b>	<b>2700K</b>			
<b>Wattage</b>	<b>11W</b>			
<b>BeamAngle</b>	25°	30°	35°	45°
<b>Luminaire Lumens (lm)</b>	1199	1186	1087	1302
<b>Circuit Watts (c/W)</b>	12.4	12.3	12.3	12.4
<b>LuminaireEfficacy (l/cW)</b>	97	96	88	105
<b>Luminace (Cd)</b>	4114	3904	2631	1950
<b>Light Source (Lm/W)</b>	180	180	180	180
<b>Engine (Lm/W)</b>	140	140	140	140
<b>Forward Volatage (Vf)</b>	31.6	31.6	31.6	31.6
<b>Current (mA)</b>	350	350	350	350
<b>CCT</b>	<b>3000K</b>			
<b>Wattage</b>	<b>11W</b>			
<b>BeamAngle</b>	25°	30°	35°	45°
<b>Luminaire Lumens (lm)</b>	1224	1210	1110	1399
<b>Circuit Watts (c/W)</b>	12.3	12.3	12.3	12.3
<b>LuminaireEfficacy (l/cW)</b>	99	98	90	114
<b>Luminace (Cd)</b>	4158	3961	2601	2026
<b>Light Source (Lm/W)</b>	178	178	178	178
<b>Engine (Lm/W)</b>	126	126	126	126
<b>Forward Volatage (Vf)</b>	31.6	31.6	31.6	31.6
<b>Current (mA)</b>	350	350	350	350
<b>Binning</b>	<b>2 step MacAdams</b>			
<b>CRI</b>	<b>90+</b>			
<b>TM-30-15</b>	<b>Rf92 - Rg99.8</b>			
<b>Lumen Maintenance</b>	<b>LM80</b>			
<b>Lifetime</b>	<b>50,000 hours</b>			
<b>Dimming</b>				

## LIGHT CONES



## POLAR CURVES



## PART CODE BUILDER

Example Code: MD-PA-SQ-WT-PLT11-27-90-25-350

Family	Variant	Bezel Finish	Engine	Power	CCT	CRI	Beam Angle	Driver Current
MD	PA-SQ	WT	PLT	11W	27K	90	25°	350mA
		BT			30K		30°	
		*C					35°	
							45°	

# REGENERATION FOR GENERATIONS



View ReGen Doc



**TAKE**

Sourcing material locally



**MAKE**

Responsible manufacture



**WASTE**

Lifetime duty of care



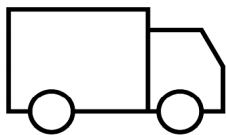
## SOFT TM66 RESULTS

Category	Points Scored	MAX Possible Points	Assessment
Product Design	111.0	134.0	3.3
Manufacturing	35.0	46.5	3.0
Materials	11.0	24.0	1.8
Ecosystem	36.0	43.0	3.3
Overall Performance	193.0	247.5	2.9
2.5 to 4.0	Excellent circularity		

TM65 Available upon request

*Embodied carbon in building services*

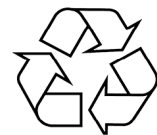
WE ENCOURAGE ALL FIXTURES TO BE RETURNED TO US SO WE CAN REGEN OR RECYCLE.



If a product has failed or has become EOL, we can arrange collection of the interchangeable light engines and associated drivers. Once received, we will review the engine to see if it can be **ReGenerated** or **recycled**.



If we can **ReGenerate** the light engine, we will only need to replace the faulty part of the fitting, which can then be restored to life, utilising all of our original optics and bezels.



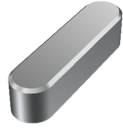
If the unit is beyond the point of repair, we will ensure the raw material is always fully recycled. We encourage all fixtures to be returned to us so we can **ReGen** or **recycle**.

## ACCESSORIES



Commissioning Tool

ACCS-TOOL-M-BAFFLE



Pano Bezel Tool

ACCS-TOOL-MAXI-BEZ



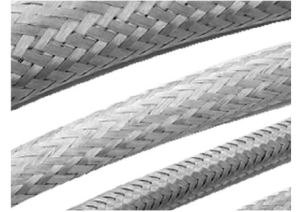
Pano Midi Adj Installation Tube

ACC-MX-PA-TUBE



Pano Midi Adj Collar Tube

ACCS-MX-PA-COLLARTUBE



Exterior Cable Sleeve

ACCS-E-CABLESLEEVE-5MM

## INSERTS



Softening Insert Recessed

ACCS-RECESSED-SOFT



Softening Insert Flush

ACCS-FLUSH-SOFT



Asymmetric Insert Recessed

ACCS-RECESSED-ASYM



Asymmetric Insert Flush

ACCS-FLUSH-ASYM



Elliptical Insert Recessed

ACCS-RECESSED-10X60ELLIPTICAL



Elliptical Insert Flush

ACCS-FLUSH-10X60ELLIPTICAL



Honeycomb Recessed

ACCS-RECESSED-HCOMB



Honeycomb Flush

ACCS-FLUSH-HCOMB



Colour Change Insert Recessed

ACCS-RECESSED-FILTER18K  
ACCS-RECESSED-FILTER22K  
ACCS-RECESSED-FILTER24K  
ACCS-RECESSED-FILTER25K



Colour Change Insert Flush

ACCS-FLUSH-FILTER18K  
ACCS-FLUSH-FILTER22K  
ACCS-FLUSH-FILTER24K  
ACCS-FLUSH-FILTER25K



Halfmoo Insert

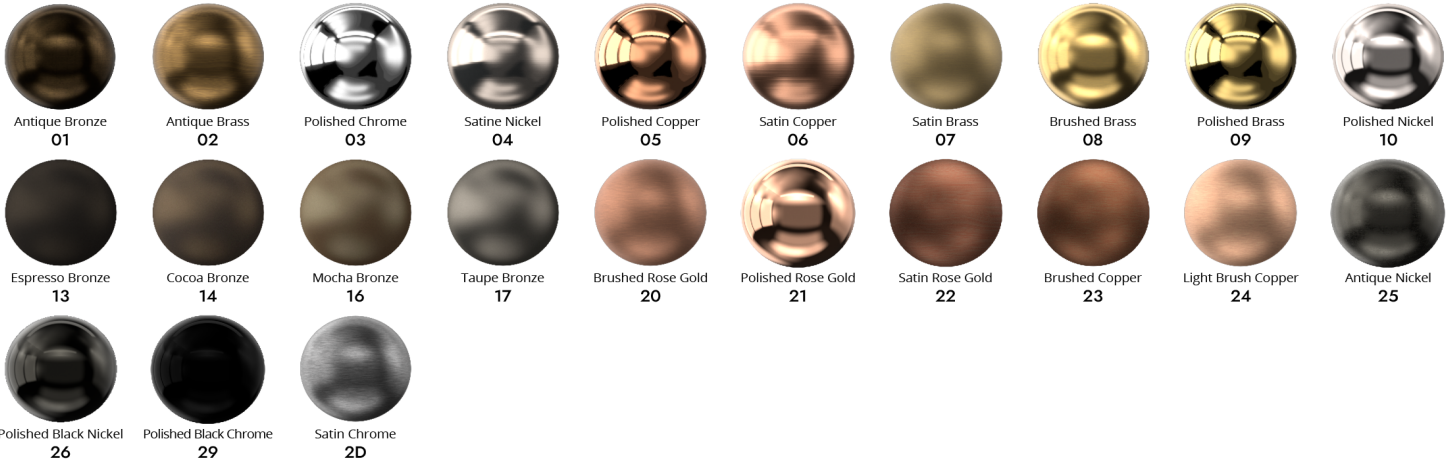
ACCS-MX-PA-HM



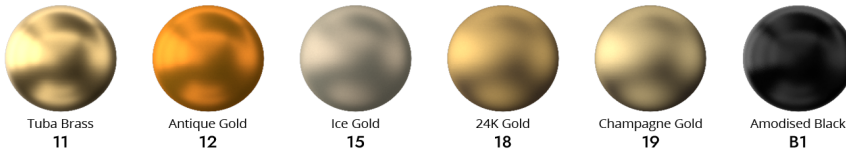
## FINISHES

Every element of your light can be finished in any of the options below, or RAL colour:

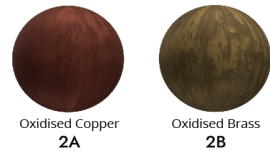
### PLATED (Interior ONLY)



### ANODISED (Interior ONLY)



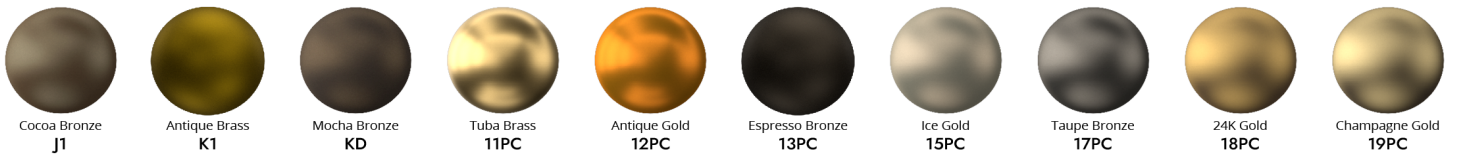
### SPECIALITY PLATED (Interior ONLY)



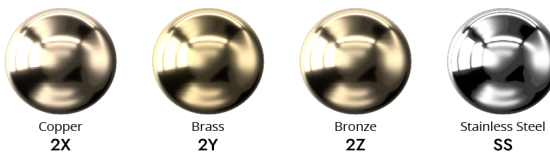
### POWDER COAT (Interior & Exterior)



### METAL POWDER COAT (Interior & Exterior)



### MARINE GRADE (Interior, Exterior & Harsh Environment)



### SPECIALITY POWDER COAT (Interior & Exterior)

