



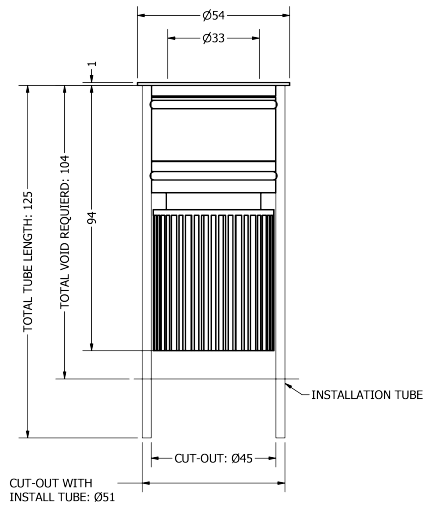
PHOS
ENGINEERING LIGHT

PANO MIDI DARKLIGHT SQUARE

PART L TECHNOLOGY



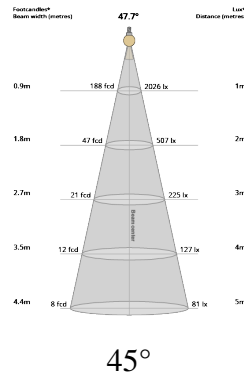
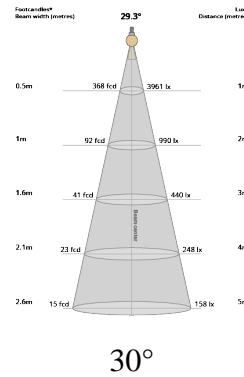
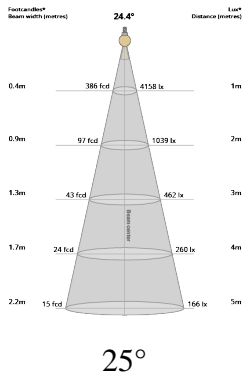
11W



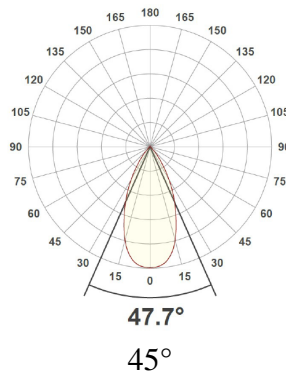
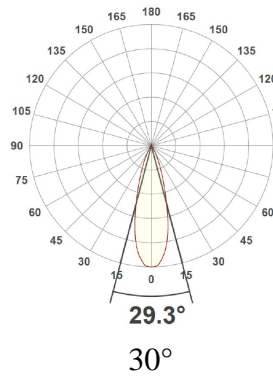
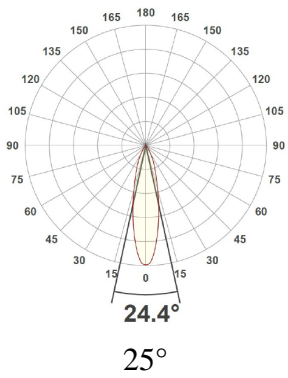
TECHNICAL SPECIFICATIONS

CCT	2700K		
Wattage	11W		
BeamAngle	25°	30°	45°
Luminaire Lumens (lm)	875	958	1096
Circuit Watts (c/W)	12.4	12.4	12.4
LuminaireEfficacy (l/cW)	71	77	89
Luminance (Cd)	4114	3599	1911
Light Source (Lm/W)	105	105	105
Engine (Lm/W)	73	73	73
Forward Volatage (Vf)	31.6	31.6	31.6
Current (mA)	350	350	350
CCT	3000K		
Wattage	11W		
BeamAngle	25°	30°	45°
Luminaire Lumens (lm)	887	970	1116
Circuit Watts (c/W)	12.4	12.3	12.3
LuminaireEfficacy (l/cW)	72	79	90
Luminance (Cd)	4189	3686	1990
Light Source (Lm/W)	110	110	110
Engine (Lm/W)	77	77	77
Forward Volatage (Vf)	31.6	31.6	31.6
Current (mA)	350	350	350
Binning	2 step MacAdams		
CRI	90+		
TM-30-15	Rf92.00 - Rg99.6		
Lumen Maintenance	LM80		
Lifetime	50,000 hours		
Dimming	Mains Dim, DALI, CASAMBI, 0-10V, Non-dim		

LIGHT CONES



POLAR CURVES



PART CODE BUILDER

Example Code: MD-PD-SQ-WT-PLT11-27-90-25-350

Family	Variant	Bezel Finish	Engine	Power	CCT	CRI	Beam Angle	Driver Current
MD	PD-SQ	WT	PLT	11W	27K	90	25°	350mA
		BT			30K		30°	
		*C					45°	

REGENERATION FOR GENERATIONS



View ReGen Doc



TAKE

Sourcing material locally



MAKE

Responsible manufacture



WASTE

Lifetime duty of care



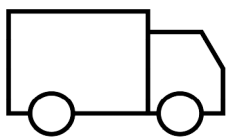
SOFT TM66 RESULTS

Category	Points Scored	MAX Possible Points	Assessment
Product Design	111.0	134.0	3.3
Manufacturing	35.0	46.5	3.0
Materials	11.0	24.0	1.8
Ecosystem	36.0	43.0	3.3
Overall Performance	193.0	247.5	2.9
2.5 to 4.0	Excellent circularity		

TM65 Available upon request

Embodied carbon in building services

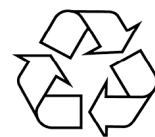
WE ENCOURAGE ALL FIXTURES TO BE RETURNED TO US SO WE CAN REGEN OR RECYCLE.



If a product has failed or has become EOL, we can arrange collection of the interchangeable light engines and associated drivers. Once received, we will review the engine to see if it can be **ReGenerated** or **recycled**.



If we can **ReGenerate** the light engine, we will only need to replace the faulty part of the fitting, which can then be restored to life, utilising all of our original optics and bezels.



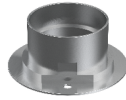
If the unit is beyond the point of repair, we will ensure the raw material is always fully recycled. We encourage all fixtures to be returned to us so we can **ReGen** or **recycle**.

ACCESSORIES



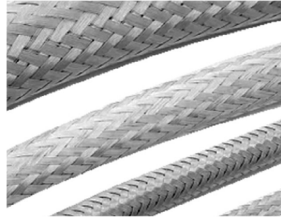
Midi Installation Tube

ACC-MD-TUBE



Midi Collar Tube

ACCS-MD-COLLARTUBE



Exterior Cable Sleeve

ACCS-E-CABLESLEEVE-5MM

INSERTS



Elliptical Insert
NOT available for square versions

EL



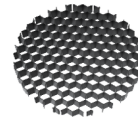
Asymmetric Insert
NOT available for square versions

AS



Softening Insert

SL



Honeycomb Insert

HC



Halfmoon Insert
NOT available for square versions

HM



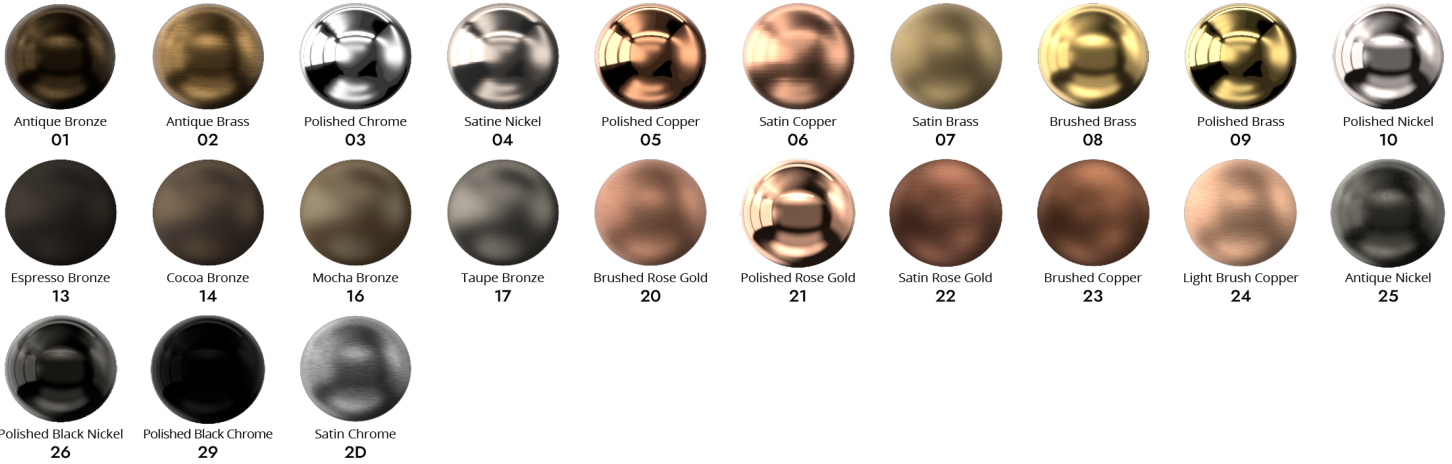
Colour Change Insert

- CCT: 18K
- CCT: 22K
- CCT: 24K
- CCT: 25K

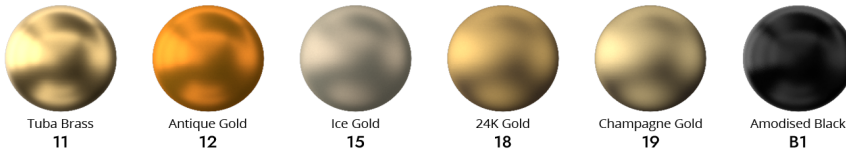
FINISHES

Every element of your light can be finished in any of the options below, or RAL colour:

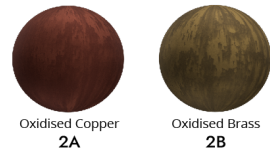
PLATED (Interior ONLY)



ANODISED (Interior ONLY)



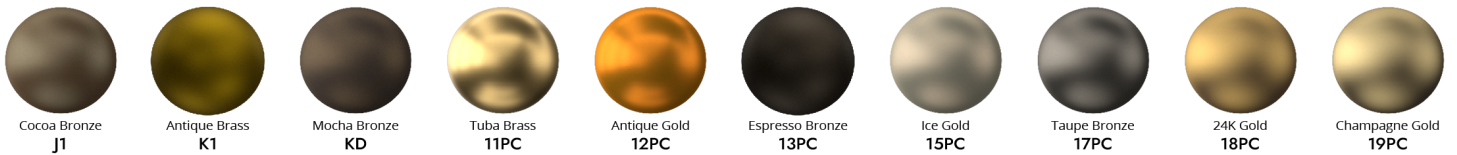
SPECIALITY PLATED (Interior ONLY)



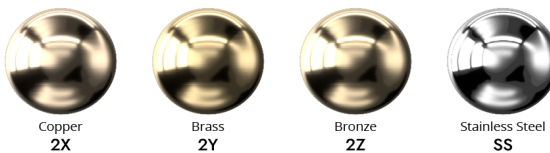
POWDER COAT (Interior & Exterior)



METAL POWDER COAT (Interior & Exterior)



MARINE GRADE (Interior, Exterior & Harsh Environment)



SPECIALITY POWDER COAT (Interior & Exterior)

