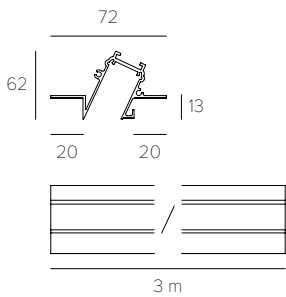


# □ VIAVAI MONO RECESSED



A - Inclined formwork  
A - Cassaforma inclinata

16318 White Bianco  
16518 Black Nero



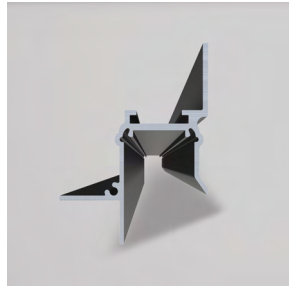
Inclined formwork cap  
Tappo cassaforma inclinata

16326 White Bianco  
16526 Black Nero

Extruded aluminum profile for installation in 10 mm thick plasterboard structures.

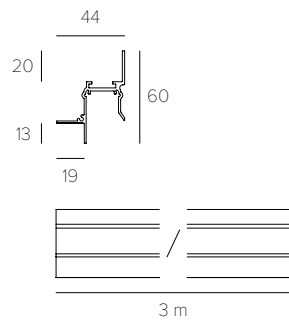
Profilo estruso in alluminio per installazioni in strutture di cartongesso con spessore 10 mm.

Kg 0.55 / 100 cm



B - Wall formwork  
B - Cassaforma a parete

16319 White Bianco  
16519 Black Nero



Wall formwork cap  
Tappo cassaforma a parete

16327 White Bianco  
16527 Black Nero

Extruded aluminum profile for installation in 10 mm thick plasterboard structures.

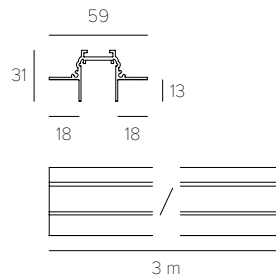
Profilo estruso in alluminio per installazioni in strutture di cartongesso con spessore 10 mm.

Kg 0.55 / 100 cm



C - Formwork  
C - Cassaforma

16324 White Bianco  
16524 Black Nero



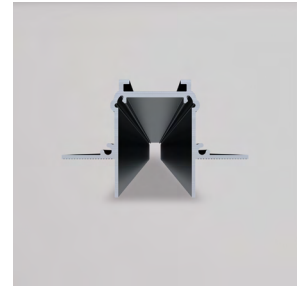
Formwork cap  
Tappo cassaforma

16328 White Bianco  
16528 Black Nero

Extruded aluminum profile for installation in 10 mm thick plasterboard structures.

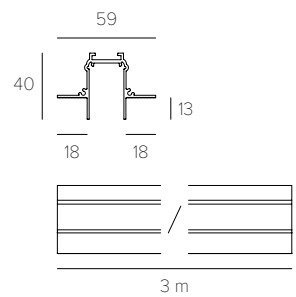
Profilo estruso in alluminio per installazioni in strutture di cartongesso con spessore 10 mm.

Kg 0.55 / 100 cm



D - Back wall formwork  
D - Cassaforma arretrata

16325 White Bianco  
16525 Black Nero



Back wall formwork cap  
Tappo cassaforma arretrata

16329 White Bianco  
16529 Black Nero

Extruded aluminum profile for installation in 10 mm thick plasterboard structures.

Profilo estruso in alluminio per installazioni in strutture di cartongesso con spessore 10 mm.

Kg 0.55 / 100 cm



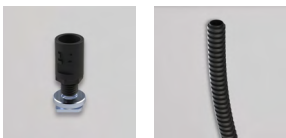
Fixing bracket  
Staffa fissaggio

16 014 Fixing bracket  
Staffa fissaggio



Fixing bracket required to anchor the track to the formwork.

Staffa di fissaggio necessaria per ancorare il binario alla cassaforma.



16 015 Connector  
Connettore

16 016 Corrugated pipe  
Tubo corrugato

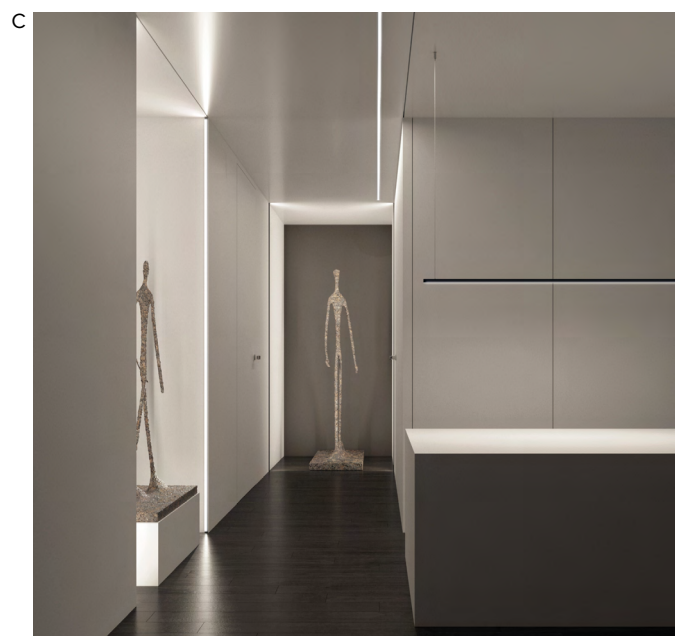
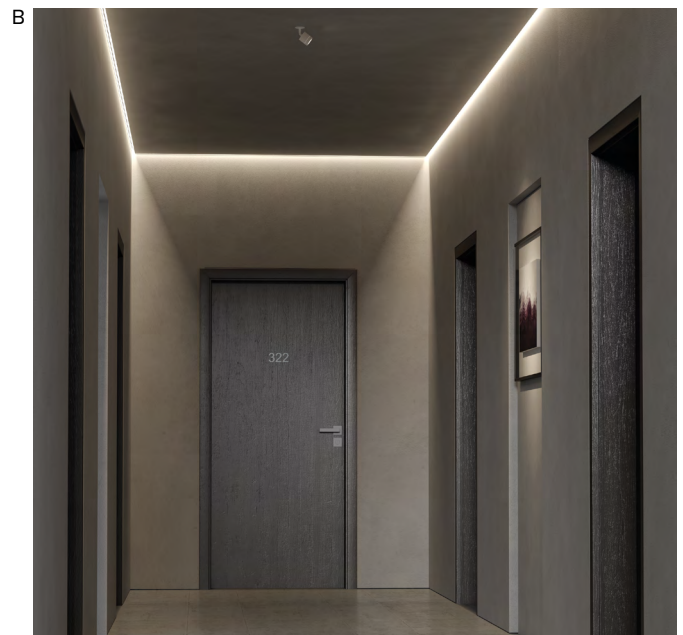
The 16016 corrugated pipe [25 m] must be used in combination with the 16015 connector. It is recommended for protecting wiring inside plasterboard structures.

Il tubo corrugato [25 m] 16016 va utilizzato in abbinamento al connettore 16015. È consigliato per proteggere il cablaggio all'interno delle strutture in cartongesso.

Kg 0.05

Dedicated accessories are available for directly fixing the formwork to the plasterboard support structure.

Sono disponibili accessori dedicati per il fissaggio diretto delle cassaforme alla struttura di sostegno del cartongesso.



LETROH Srl  
Via Cadorna 15  
20073 Opera [Milano] Italia  
[contact@letroh.com](mailto:contact@letroh.com)  
[letroh.com](http://letroh.com)

