







BOB is a LED spot with double joint that allows an inclination of 90° on the horizontal plane and a rotation of 360° around the vertical axis. Aluminum structure and heat sink. Easy replacement of secondary lens.

BOB è uno spot LED con doppio snodo che permette un'inclinazione di 90° sul piano orizzontale e una rotazione di 360° attorno all'asse verticale. Struttura e dissipatore in alluminio. Facile sostituzione dell'ottica secondaria.

## □ SURFACE BOB



In the LED version, BOB is available with an adapter compatible with most of three-phase electrified tracks.

Nella versione LED, BOB è disponibile con adattatore compatibile con la maggior parte dei binari elettrificati trifase.





# □ SURFACE BOB



Recessed spot  
Spot a incasso

1 LED x 13/20W - 500 mA

2700K CRI 97 - 1100 / 1800 lm

52380 White Bianco  
52580 Black Nero

3000K CRI 97 - 1150 / 1900 lm

52381 White Bianco  
52581 Black Nero

To be completed with lenses  
Da completare con ottiche

51102 30°  
51104 40°  
51106 60°  
51108 Oval  
51110 Rectangular  
51112 Wallwasher

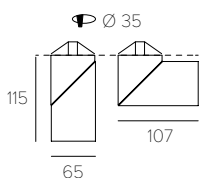
Power supply to be added  
Alimentatore da aggiungere

25150 350 mA - 13W  
Dimmable cut phase  
25152 500 mA - 20W.  
Dimmable cut phase  
25156 350/500 mA - 13/20W  
CASAMBI  
25153 350/500 mA - 13/20W  
DALI 1 - 2, Push, 0-10V,  
1-10V

Optional  
Opzionale

25160 CASAMBI  
Remote control

The diameter of the hole is smaller than  
the dimensions of the power supplies.  
Il diametro del foro è inferiore alle  
misure degli alimentatori.



◆ IP20 CE Kg 0.74



Wall/ceiling spot  
Spot parete/soffitto

1 LED x 13/20W - 500 mA

2700K CRI 97 - 1100 / 1800 lm

52370 White Bianco  
52570 Black Nero

3000K CRI 97 - 1150 / 1900 lm

52371 White Bianco  
52571 Black Nero

To be completed with lenses  
Da completare con ottiche

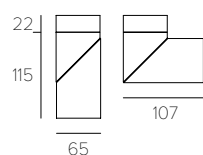
51102 30°  
51104 40°  
51106 60°  
51108 Oval  
51110 Rectangular  
51112 Wallwasher

Power supply to be added  
Alimentatore da aggiungere

25150 350 mA - 13W  
Dimmable cut phase  
25152 500 mA - 20W.  
Dimmable cut phase  
25156 350/500 mA - 13/20W  
CASAMBI  
25153 350/500 mA - 13/20W  
DALI 1 - 2, Push, 0-10V,  
1-10V

Optional  
Opzionale

25160 CASAMBI  
Remote control



◆ IP20 CE Kg 0.76



Wall/ceiling spot  
Spot parete/soffitto

1 LED x 20W - 230V

2700K CRI 97 - 1100 / 1800 lm

54380 White Bianco  
54580 Black Nero

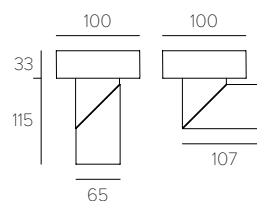
3000K CRI 97 - 1150 / 1900 lm

54381 White Bianco  
54581 Black Nero

To be completed with lenses  
Da completare con ottiche

51102 30°  
51104 40°  
51106 60°  
51108 Oval  
51110 Rectangular  
51112 Wallwasher

Power-supply included  
Dimmable cut phase  
Alimentatore incluso  
Dimmerabile taglio di fase



IP20 CE Kg 0.82



Three-phase spot  
Spot trifase

1 LED x 20W - 230V - DALI 2

2700K CRI 97 - 1100 / 1800 lm

57380 White Bianco  
57580 Black Nero

3000K CRI 97 - 1150 / 1900 lm

57381 White Bianco  
57581 Black Nero

1 LED x 20W - Not Dimmable

2700K CRI 97 - 1800 lm

58380 White Bianco  
58580 Black Nero

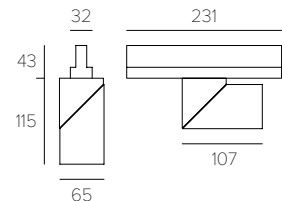
3000K CRI 97 - 1900 lm

58381 White Bianco  
58581 Black Nero

To be completed with lenses  
Da completare con ottiche

51102 30°  
51104 40°  
51106 60°  
51108 Oval  
51110 Rectangular  
51112 Wallwasher

Power-supply included  
Not dimmable / Dimmable DALI 2  
Alimentatore incluso  
No dimm. / Dimmerabile DALI 2



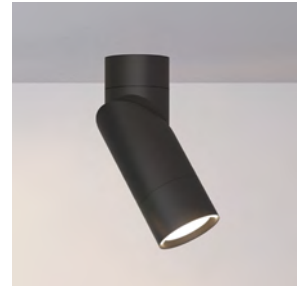
IP20 CE Kg 0.90



GU10 recessed spot  
Spot a incasso GU10

230V - GU10 - 230V  
MAX 10W LED

- 52390 White Bianco
- 52590 Black Nero



GU10 wall/ceiling spot  
Spot a parete/soffitto GU10

230V - GU10 - 230V  
MAX 10W LED

- 54390 White Bianco
- 54590 Black Nero

The dimensions of the lamp body have been designed to contain the 50 mm diameter GU10 socket bulbs with SMART technology (Philips HUE, Alexa, Google Home, Apple Home Kit).

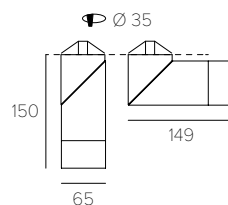
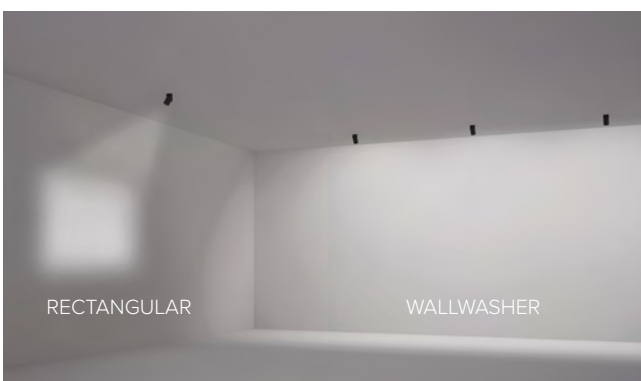
I dimensionamenti del corpo lampada sono stati studiati per contenere le lampadine attacco GU10 diametro 50 mm con tecnologia SMART (Philips HUE, Alexa, Google Home, Apple Home Kit).

The dimensions of the lamp body have been designed to contain the 50 mm diameter GU10 socket bulbs with SMART technology (Philips HUE, Alexa, Google Home, Apple Home Kit).

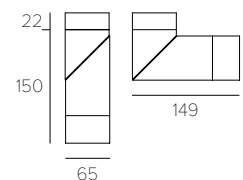
I dimensionamenti del corpo lampada sono stati studiati per contenere le lampadine attacco GU10 diametro 50 mm con tecnologia SMART (Philips HUE, Alexa, Google Home, Apple Home Kit).

Optics: 30°, 40°, 60°, oval, rectangular, Wallwasher. Different shade LEDs [2700K, 3000K] CRI 97. Photometric measure LETROH.com

Ottiche: 30°, 40°, 60°, ovale, rettangolare, Wallwasher. LED di differenti tonalità [2700K, 3000K] CRI 97. Curve fotometriche LETROH.com



IP20 CE Kg 0.80



IP20 CE Kg 0.82



LETROH Srl  
Via Cadorna 15  
20073 Opera [Milano] Italia  
[contact@letroh.com](mailto:contact@letroh.com)  
[letroh.com](http://letroh.com)

