

# ULTRACRI

High performance ledstrip CRI between 97 and 98  
 Ruban led haute performance IRC compris entre 97 et 98  
**A4101**



## Indice de Rendu de Couleur IRC Color Rendering CRI 98 (+/-1)

**Temperature de couleur Color CCT**  
 1800K - 2100K - 2400K - 2700K - 3000K - 3500K - 4000K - 5000K - 6000K

**Rendement Luminous Efficacy**  
 60 lm/w - 90 lm/w

**Puissance & nombre de led Power & number of Led**  
 23 w/m & 240 led/m | 20 w/m & 120 led/m | 10 w/m & 120 leds/m

**Coupe Cut**  
 25 mm (23w) | 50 mm (20w/10w)

**Dimensions Dimensions**  
 5000 mm x 10 mm x 2 mm

**Température d'utilisation Ambient temp.**  
 - 10°C / + 40°C



### A4101.20.120.924.IP20.DALI

#### Power & number led/m

23 w/m & 240 led/m	23.240
20 w/m & 120 led/m	20.120
10 w/m & 120 led/m	10.120
Custom (5 to 15W)	

Led Color	flux 10 w/m	20 w/m	23 w/m	
1800K YP35	650 lm	1190 lm	2415 lm	918
2100K YN35	720 lm	1320 lm	2415 lm	921
2400K YM25	750 lm	1360 lm	2530 lm	924
2700K YK45	890 lm	1625 lm	2645 lm	927
3000K YJ65	890 lm	1625 lm	2645 lm	930
3500K YI45	890 lm	1625 lm	2780 lm	935
4000K YH54	950 lm	1735 lm	2780 lm	940
5000K YF50G	950 lm	1735 lm	2780 lm	950
6000K YC84	995 lm	1825 lm	2691 lm	960

Custom binning Yxxx  
 (See binning selection)

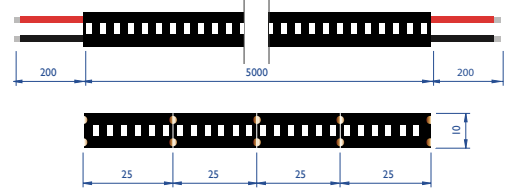
#### IP Rating

IP 20	IP20
IP 67 TUBE	IP67
Custom (IP20 or IP65)	

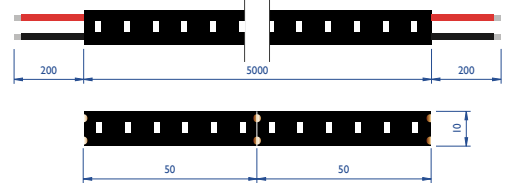
#### Dimming

No dimming	HF
Dali	DALI
Dmx	DMX
Dimming I to 10VDC	D I O

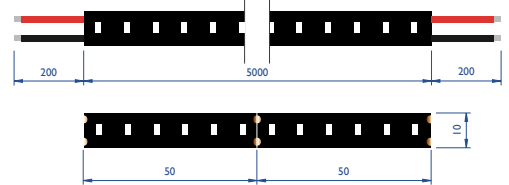
#### 23w



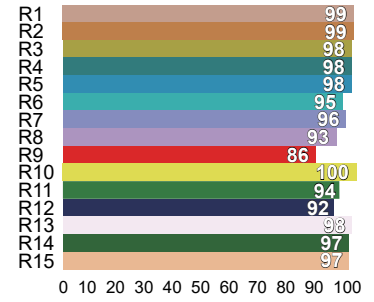
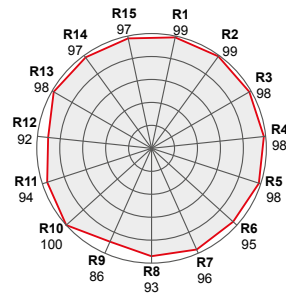
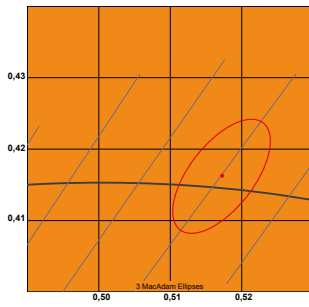
#### 20w



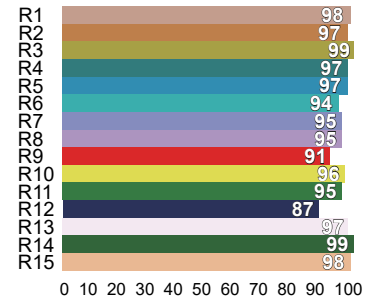
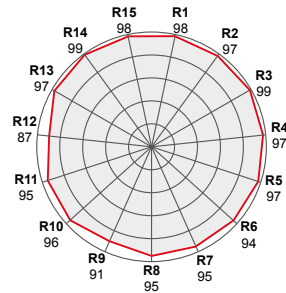
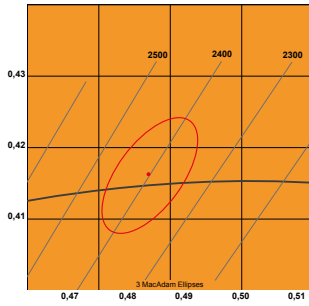
#### 10w



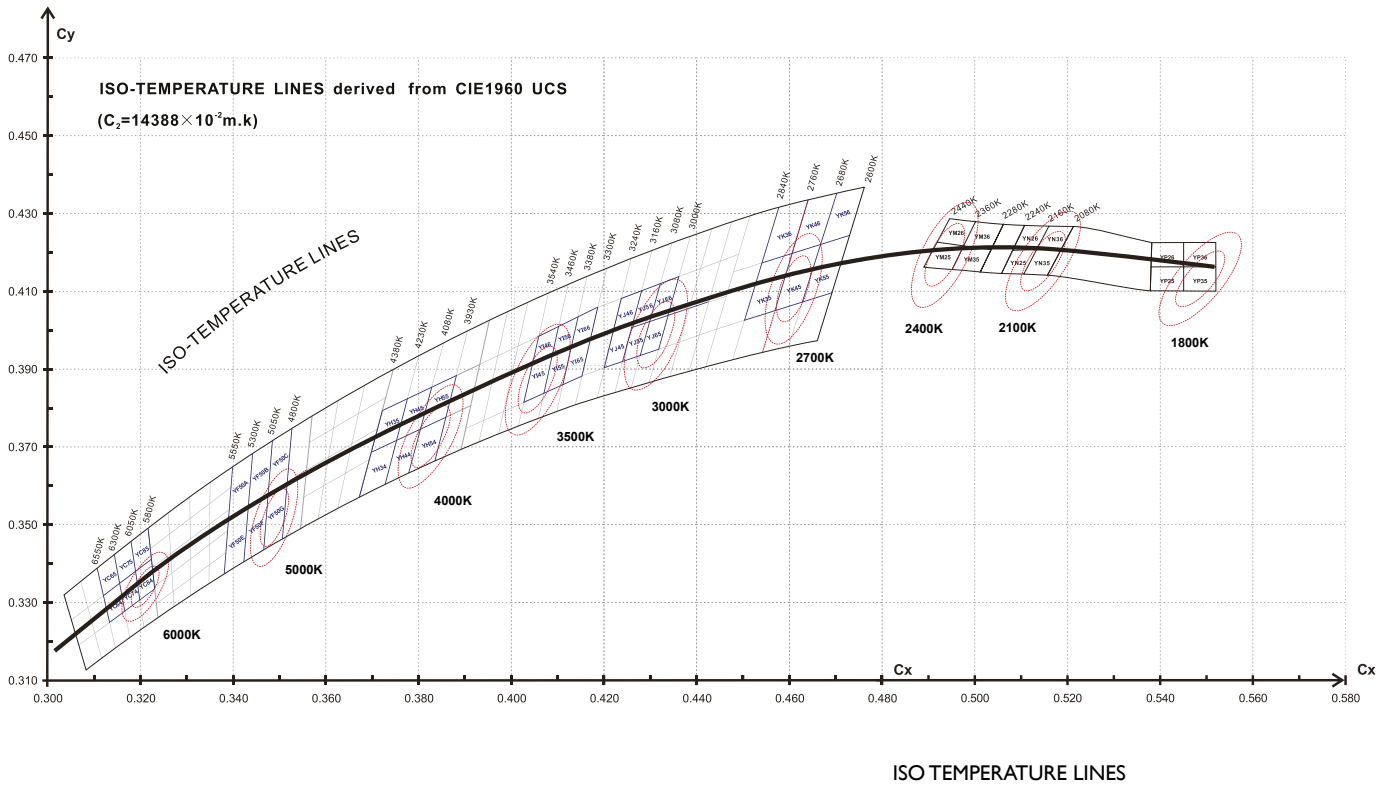
2100K | YN35 | x = 0,516 y = 0,414 | Ra 97 | R9 87 | CQS 97



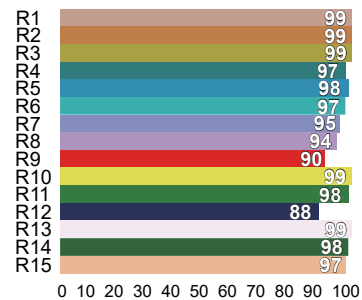
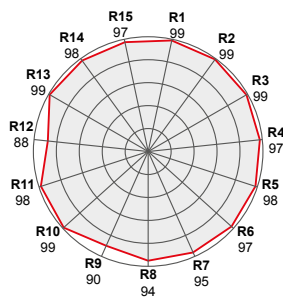
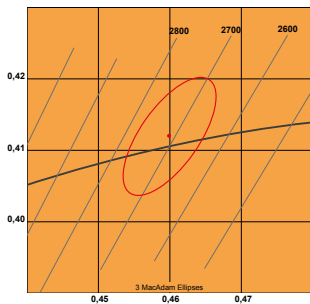
2400K | YM25 | x = 0,487 y = 0,416 | Ra 96 | R9 91 | CQS 95



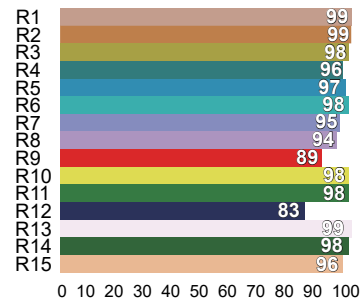
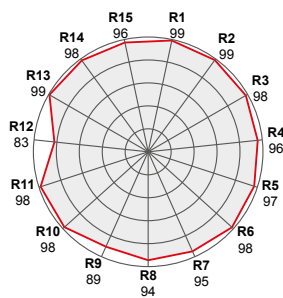
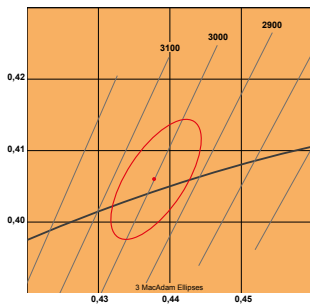
BINNING SELECTION FOR CUSTOM STRIP



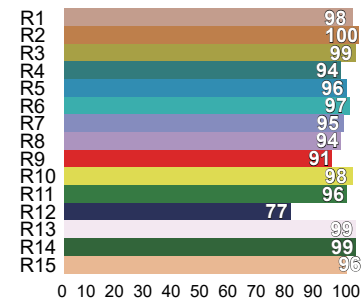
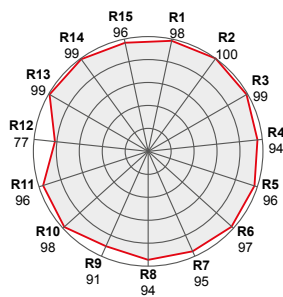
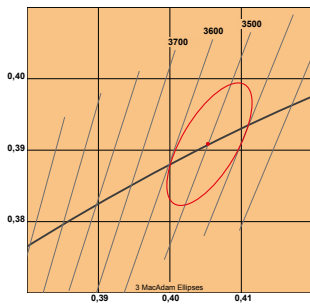
2700K | YK45 |  $x = 0,460$   $y = 0,412$  | Ra 98 | R9 90 | CQS 94



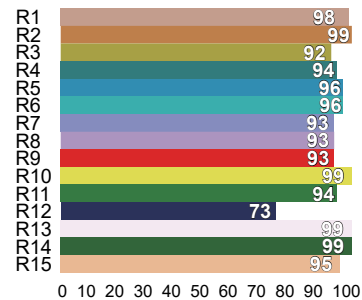
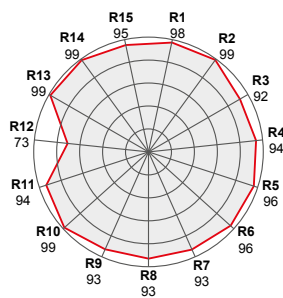
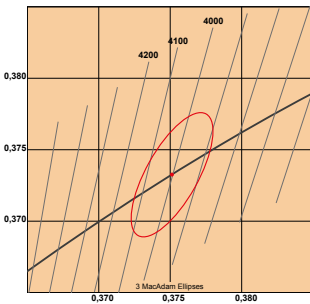
3000K | YJ65 |  $x = 0,438$   $y = 0,406$  | Ra 97 | R9 90 | CQS 94



3500K | YI45 |  $x = 0,405$   $y = 0,391$  | Ra 97 | R9 91 | CQS 94



4000K | YH54 |  $x = 0,380$   $y = 0,377$  | Ra 96 | R9 93 | CQS 93



6000K | YC84 |  $x = 0,320$   $y = 0,320$  | Ra 94 | R9 80 | CQS 90 | ANSI C78.377A

