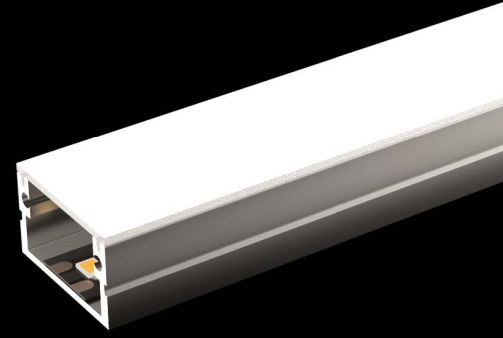


ROMULUS XL

Profile with IP65 diffusor
Profil avec diffuseur IP65

A39104



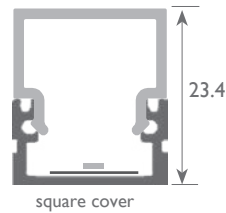
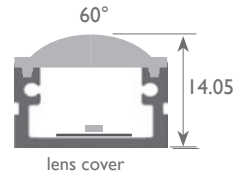
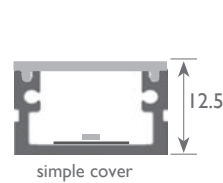
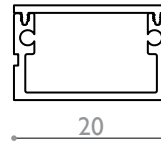
Puissance maxi Power max
35 w/m

Dimensions Dimensions
20 x 11 mm

Longueur maximale Max.length
3000 mm

Fil incandescent Glow wire test
Night&Day 650°C - Opal Frost 60° 850°C

Température d'utilisation Ambient temp.
- 10°C / + 40°C



A39104.C9.IP65.00.OP.DALI

Type of led

Pure CRI99	A4199	C99
UltraCRI	A4101	CR
Dynamic White	A4102	DW
Regular	A4109	C9
RGB	A4106	RGB
RGBW	A4107	RGBW
RGB2W	A4117	RGB2W
High Efficacy	A4111	HE
Ultra Efficacy	A4116	UE

IP Rating

IP20	IP20
IP54	IP54
IP65H	IP65

Finishes

Aluminium anodised silver	00
Aluminium anodised black	04

Cover & Optic

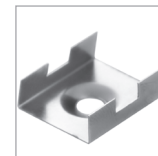
Opal	PC	OP
Frost	PC	FR
F60°	PC	F60
Night & Day	PC	ND

Dimming

No dimming	HF
Dali	DALI
Dmx	DMX
Dimming & to 10Vdc	D10
Phase Dimming Digital	PHD



A39104.00



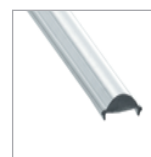
A39104.CLI
Clips



A39104.OP
Opal



A39104.SUS
Suspension



A39104.T60
Transparent 60°



A39104.ND
Night & Day