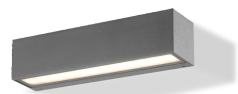


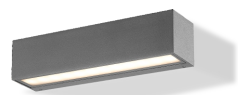
7W 14W	CRI80	3000K	110°	IP65	PHILIPS 60,000h@L80B10	CE	Body: Aluminum Color: Dark-Grey
-----------	-------	-------	------	------	---------------------------	----	------------------------------------

LED Power	System Power	Input	CRI	CCT	Beam	System Output	Model	Code
5 W	7 W	220-240 VAC	80	3000K	110°	650lm	NICE 250S-830-110°	N25S-830A107F-DN

Remark: With internal Non-Dimmable LED driver



NICE 250 Single



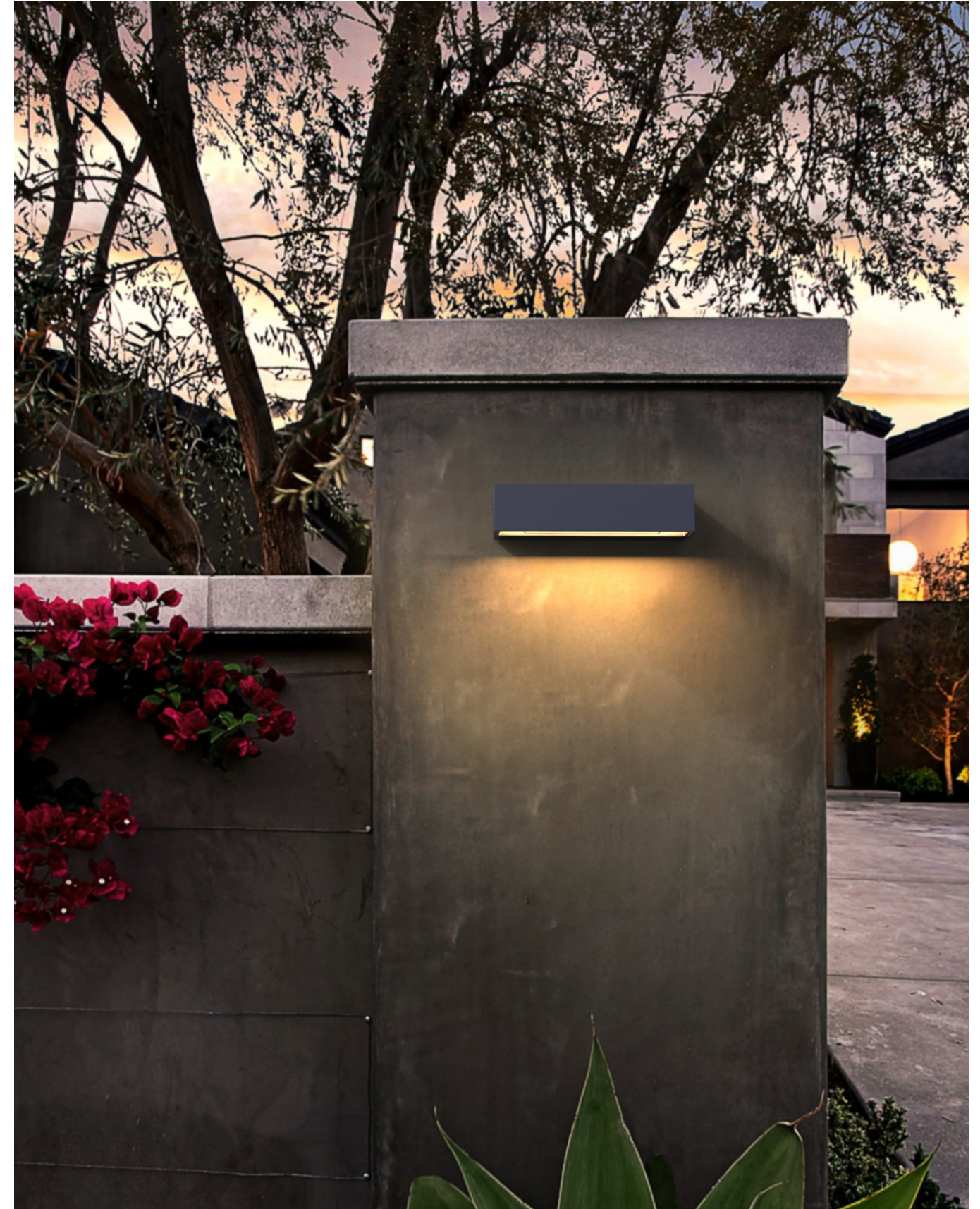
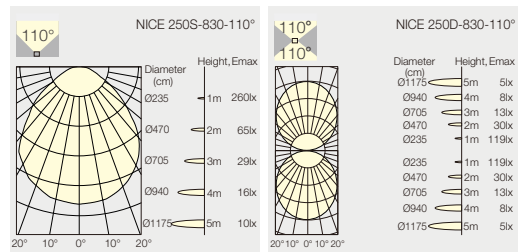
NICE 250 Double

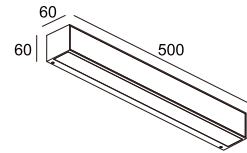
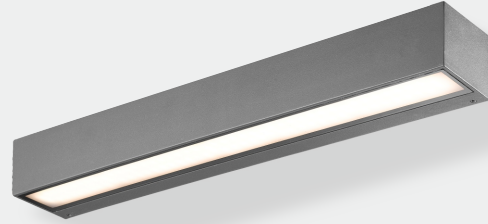
12 W	14 W	220-240 VAC	80	3000K	110°	1300lm	NICE 250D-830-110°	N25D-830A114F-DN
------	------	-------------	----	-------	------	--------	--------------------	------------------

Remark: With internal Non-Dimmable LED driver

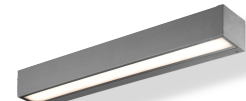
Light Distribution

3000K

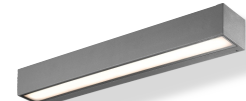




14W
20W CRI80 3000K 110° IP65 PHILIPS 60,000h@L80B10 CE 3 Body: Aluminum Color: Dark-Grey



NICE 500 Single



NICE 500 Double

LED Power	System Power	Input	CRI	CCT	Beam	System Output	Model	Code
12 W	14 W	220-240 VAC	80	3000K	110°	1300lm	NICE 500S-830-110°	N50S-830A114F-DN

Remark: With internal Non-Dimmable LED driver

18 W	20 W	220-240 VAC	80	3000K	110°	1800lm	NICE 500D-830-110°	N50D-830A120F-DN
------	------	-------------	----	-------	------	--------	--------------------	------------------

Remark: With internal Non-Dimmable LED driver

Light Distribution

3000K

