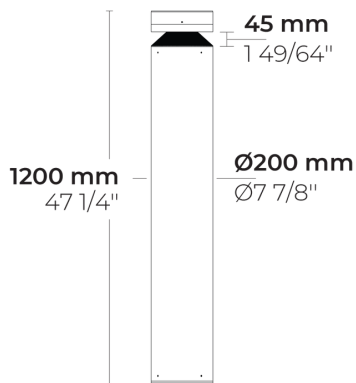


CORVUS

LB6065.541-EN



UPCOMING



[SYM]
Symmetric - 155

Variants

Light distribution	[SYM] 155
Delivered lumens flux	761 - 1694 lm
Rated input power	25 - 51 W
Colour temperature	2200 K CRI 80, 2700 K CRI 80, 3000 K CRI 80, 4000 K CRI 70
Lifetime L90B50 (hour)	>102 000
Lifetime L80B50 (hour)	>102 000

Options

Control	On/Off, DALI, AutoDIM, StepDIM *
Product colours	
Height	90cm, 1.2m,

Extras

Light output	Constant light output
Consult the factory	Class II, 120-277V 50/60Hz
Luminaire body options	Double powder coating

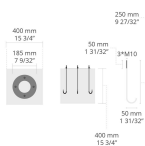
Technical information

Mounting	Surface mountable
Housing	Corrosion resistant, extruded, marine grade aluminum housing
Finishing	Chromate conversion pretreatment followed by electrostatic powder coating
Fasteners	Stainless steel (AISI 304 / EN 1.4301 grade)
Gasket	Silicone
Lens / Reflector	UV stable, bio-based polycarbonate diffusor
Glass / Diffusor	Tempered safety glass
Impact protection	IK08
Ingress protection	IP65
Input voltage	220-240V 50/60Hz
Insulation class	Class I
Weight	11.8 kg
LED module	High power LEDs on metal-core PCB
Driver	Internal LED driver
Driver surge protection	10/6 kV
Power factor	> 0.90
Through wiring	Single cable entry
Operating temperature	-40...50°C
Cable	0.5 m of flexible cable

* Please check the specific variant for each control type.

Accessories (To be ordered separately)

Anchorage

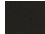




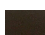



630J014

630J014

Project name		Type		Quantity	
Date		Note			

LB6065.541-EN-____-____-____-____-EN-C1-____-____-____-____

Light distribution	Rated input power	Colour temperature	Control	Product colours
[SYM] Symmetric - 155	[350] 25 W	[822] 2200 K CRI 80	[ONOFF] On/Off	[HM1]  Black
	[500] 36 W	[827] 2700 K CRI 80	[DALI] DALI	[HM2]  Dark grey
	[700] 51 W	[830] 3000 K CRI 80	[AUTO] AutoDIM	[HM3]  Anthracite grey
		[740] 4000 K CRI 70	[STEP] StepDIM	[HM4]  Light grey
				[HM5]  White
				[HM6]  Bronze
				[CC]  Custom colour (Please specify RAL code)

Height	Extras	Accessories (<i>To be ordered separately</i>)
[H0.90] 90cm [H1.2] 1.2m [HC]	Light output	[630]014] 630]014
	[CLO] Constant light output	
	Consult the factory	
	[C2] Class II	
	[UNI] 120-277V 50/60Hz	
	Luminaire body options	
	[DPC] Double powder coating	

Variant code	Light distribution	Delivered lumens flux	Rated input power	Colour temperature	Control
LB6065.541-EN-SYM-350-740	[SYM] Symmetric - 155	971 lm	25 W	4000 K CRI 70	On/Off, DALI, AutoDIM, StepDIM
LB6065.541-EN-SYM-350-822	[SYM] Symmetric - 155	761 lm	25 W	2200 K CRI 80	On/Off, DALI, AutoDIM, StepDIM
LB6065.541-EN-SYM-350-827	[SYM] Symmetric - 155	870 lm	25 W	2700 K CRI 80	On/Off, DALI, AutoDIM, StepDIM
LB6065.541-EN-SYM-350-830	[SYM] Symmetric - 155	914 lm	25 W	3000 K CRI 80	On/Off, DALI, AutoDIM, StepDIM
LB6065.541-EN-SYM-500-740	[SYM] Symmetric - 155	1304 lm	36 W	4000 K CRI 70	On/Off, DALI, AutoDIM, StepDIM
LB6065.541-EN-SYM-500-822	[SYM] Symmetric - 155	1074 lm	36 W	2200 K CRI 80	On/Off, DALI, AutoDIM, StepDIM
LB6065.541-EN-SYM-500-827	[SYM] Symmetric - 155	1227 lm	36 W	2700 K CRI 80	On/Off, DALI, AutoDIM, StepDIM
LB6065.541-EN-SYM-500-830	[SYM] Symmetric - 155	1227 lm	36 W	3000 K CRI 80	On/Off, DALI, AutoDIM, StepDIM
LB6065.541-EN-SYM-700-740	[SYM] Symmetric - 155	1694 lm	51 W	4000 K CRI 70	On/Off, DALI, AutoDIM, StepDIM
LB6065.541-EN-SYM-700-822	[SYM] Symmetric - 155	1395 lm	51 W	2200 K CRI 80	On/Off, DALI, AutoDIM, StepDIM
LB6065.541-EN-SYM-700-827	[SYM] Symmetric - 155	1594 lm	51 W	2700 K CRI 80	0-10V, DALI, AutoDIM, StepDIM
LB6065.541-EN-SYM-700-830	[SYM] Symmetric - 155	1594 lm	51 W	3000 K CRI 80	0-10V, DALI, AutoDIM, StepDIM