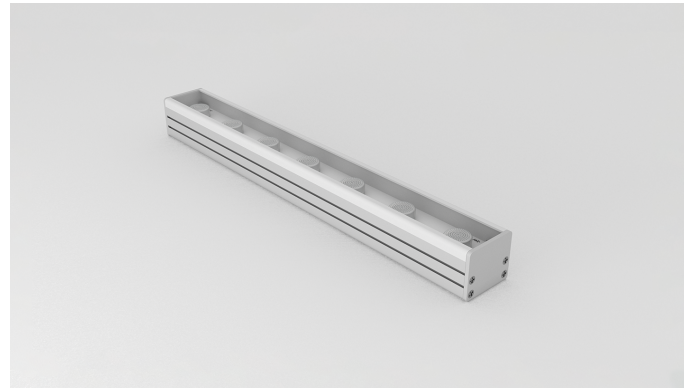


PRODUCT INFORMATION

Description RIGID GRAZER 30° | 3000K | 3 SDCM | IP20
 | 28 LED/M | 24V | 80CRI | 3.6W EA |
 370LM | LENGTH 254MM SCREW
 CONNECTION MALE AND FEMALE |
 INCLUDES 2 SURFACE MOUNTING CLIPS

Product Code RG-30-30-250

Product Range Rigid Grazer Maxi



PRODUCT SPECIFICATION

Dimensions H26.28/W30.00mm/L254.00mm

Weight 0.17kg

Length 254.00mm

LED Pitch 35.7mm

Colour Temperature White

Lifetime > 30,000 h

Operating Temp MIN = -25°C, MAX = 45°C

IP Rating IP20

Mounting Clips

Connection Micro Screw Connector Male +
 Female

PERFORMANCE DATA (for 0mm)

Power Consumption 3.60 W

Supply Voltage 24V DC

Supply Current 0.15 A

Luminous Flux 370.00lm/m

Lumen Efficiency 102.80lm/w

Max Power Length 5000mm

Beam Angle 30°

TECHNICAL DRAWING

