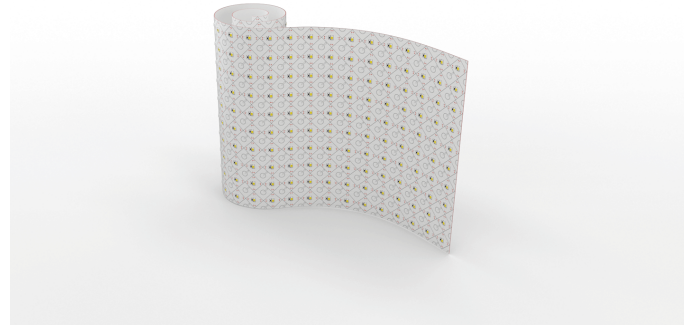


## PRODUCT INFORMATION

Description FLEXI PANEL 30 SC | 2700K | 480 x 240mm  
 | IP20 | 24V | 80CRI | 30W | 3105LM | 288  
 LED | VHB / SCREW | 0-10V/1-  
 10V/DMX/DALI

Product Code 015-0552

Product Range Flexi Panel White



## PRODUCT SPECIFICATION

Dimensions	W240.00 / L480.00mm
Cutting Interval	20 x 20mm
LED Pitch	20 x 20mm
LED's Per Panel	288
Minimum Bend Radius	10mm
Colour Temperature	SC 2700K
Bin/step	3 SDCM
CRI Rating	80.00
Lifetime	> 50,000 h
Operating Temp	Min = -25°C, Max = 45°C
IP Rating	IP20
Mounting	VHB / SCREW
Connection	Push Connector
Control Protocol	0-10V/1-10V/DMX/DALI

## PERFORMANCE DATA (Per Panel)

Power Consumption	30.00 W
Supply Voltage	24V DC
Supply Current	1.25 A
Luminous Flux	3105.00lm/panel
Lumen Efficiency	104.00lm/w
Max Panels Connected	7pcs
Beam Angle	120°



## TECHNICAL DRAWING

IP20

