

# REGIO V2

Flexible Floodlight Family with Extreme Power



REGIO V2 boasts multiple sizes, flexible optics, and high-power light output options that make it the ideal choice for illuminating public areas, sports arenas, and airport aprons. REGIO V2 may be quickly modified to meet the unique requirements of the environment it is being used in, resulting in the best illumination possible.

- Glare management with special lens system
- 4 different beam angle options
- +110°/-180° vertically adjustable with aim locking set screw allowing fine-tuning
- Perfectly sealed to keep optics away from harmful environmental elements
- Easy installation and maintenance with modular structure

Product code	Product name	Light distribution	Delivered lumens flux	Rated input power	Colour temperature	Control	Weight
LF8038.500-EN	REGIO V2 N 1 Module	[EL] 20x30°, [N] 15°,	40204 - 54221 lm	380 W	2700 K CRI 80, 3000 K CRI 80, 4000 K CRI 70, 4000 K CRI 80, 5700 K CRI 90	DALI	12.1 kg
LF8038.501-EN	REGIO V2 1 Module	[EL-2] 35x85°, [MN] 30°,	44607 - 59320 lm	380 W	2700 K CRI 80, 3000 K CRI 80, 4000 K CRI 70, 4000 K CRI 80, 5700 K CRI 90	DALI	12.1 kg
LF8038.502-EN	REGIO V2 N HP 1 Module	[EL] 20x30°, [N] 15°,	58871 - 80090 lm	580 W	2700 K CRI 80, 3000 K CRI 80, 4000 K CRI 70, 4000 K CRI 80, 5700 K CRI 90	DALI	12.1 kg
LF8038.503-EN	REGIO V2 HP 1 Module	[EL-2] 35x85°, [MN] 30°,	68449 - 86420 lm	580 W	2700 K CRI 80, 3000 K CRI 80, 4000 K CRI 70, 4000 K CRI 80, 5700 K CRI 90	DALI	12.1 kg
LF8038.520-EN	REGIO V2 N 2 Module	[EL] 20x30°, [N] 15°,	81426 - 107048 lm	780 W	2700 K CRI 80, 3000 K CRI 80, 4000 K CRI 70, 4000 K CRI 80, 5700 K CRI 90	DALI	20.2 kg
LF8038.521-EN	REGIO V2 2 Module	[EL-2] 35x85°, [MN] 30°,	91016 - 116867 lm	780 W	2700 K CRI 80, 3000 K CRI 80, 4000 K CRI 70, 4000 K CRI 80, 5700 K CRI 90	DALI	20.2 kg
LF8038.522-EN	REGIO V2 N HP 2 Module	[EL] 20x30°, [N] 15°,	123755 - 166430 lm	1180 W	2700 K CRI 80, 3000 K CRI 80, 4000 K CRI 70, 4000 K CRI 80, 5700 K CRI 90	DALI	20.2 kg
LF8038.523-EN	REGIO V2 HP 2 Module	[EL-2] 35x85°, [MN] 30°,	135438 - 177987 lm	1180 W	2700 K CRI 80, 3000 K CRI 80, 4000 K CRI 70, 4000 K CRI 80, 5700 K CRI 90	DALI	20.2 kg
LF8038.540-EN	REGIO V2 N 3 Module	[EL] 20x30°, [N] 15°,	154513 - 205572 lm	1480 W	2700 K CRI 80, 3000 K CRI 80, 4000 K CRI 70, 4000 K CRI 80, 5700 K CRI 90	DALI	28.8 kg
LF8038.541-EN	REGIO V2 3 Module	[EL-2] 35x85°, [MN] 30°,	176072 - 221879 lm	1480 W	2700 K CRI 80, 3000 K CRI 80, 4000 K CRI 70, 4000 K CRI 80, 5700 K CRI 90	DALI	28.8 kg

LF8038.542-EN	REGIO V2 N HP 3 Module	[EL] 20x30°, [N] 15°,	185481 - 247055 lm	1780 W	2700 K CRI 80, 3000 K CRI 80, 4000 K CRI 70, 4000 K CRI 80, 5700 K CRI 90	DALI	28.8 kg
LF8038.543-EN	REGIO V2 HP 3 Module	[EL-2] 35x85°, [MN] 30°,	210653 - 267096 lm	1780 W	2700 K CRI 80, 3000 K CRI 80, 4000 K CRI 70, 4000 K CRI 80, 5700 K CRI 90	DALI	28.8 kg
LF8038.551-EN	REGIO V2 R 1 Module	[N] 15°, [MN] 30°,	40949 - 186753 lm	380 - 1480 W	2700 K CRI 80, 3000 K CRI 80		12.1 kg
LF8038.552-EN	REGIO V2 R 2 Module	[N] 15°, [MN] 30°,	46632 - 203146 lm	380 - 1780 W	2700 K CRI 80, 3000 K CRI 80		20.2 kg
LF8038.553-EN	REGIO V2 R 3 Module	[N] 15°, [MN] 30°,	64410 - 224583 lm	580 - 1780 W	2700 K CRI 80, 3000 K CRI 80		28.8 kg
LF8038.561-EN	REGIO V2 R HP 1 Module	[EL] 20x30°, [EL-2] 35x85°,	42602 - 182234 lm	380 - 1480 W	2700 K CRI 80, 3000 K CRI 80		12.1 kg
LF8038.562-EN	REGIO V2 R HP 2 Module	[EL] 20x30°, [EL-2] 35x85°,	44607 - 211558 lm	380 - 1780 W	2700 K CRI 80, 3000 K CRI 80		20.2 kg
LF8038.563-EN	REGIO V2 R HP 3 Module	[EL] 20x30°, [EL-2] 35x85°,	64997 - 218026 lm	580 - 1780 W	2700 K CRI 80, 3000 K CRI 80		28.8 kg

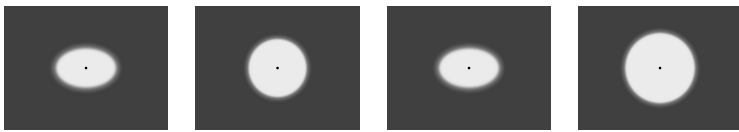
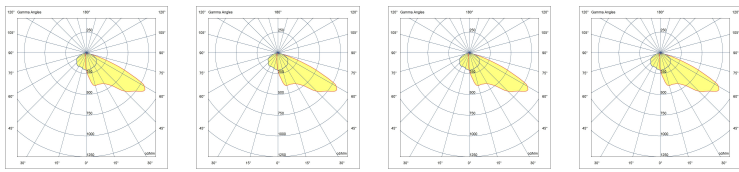
**HPR Pazarlama A.Ş.**

Başkent OSB 22. Cd. No: 2, Malıköy, Temelli,  
Sincan, 06909 Ankara, Turkey  
+90 312 267 54 30  
info@hepergroup.com

**HEPER Europe GmbH**

Ahornweg 5a, 58675  
Hemer, Germany  
+49 237 2901 2975  
infoEU@hepergroup.com

We reserve the right to change specifications without prior written notice. Edition: 31.01.2024. For current version visit [heperlighting.com](http://heperlighting.com). All flux ( $\pm 7\%$  tolerance) and power values ( $\pm 10\%$  tolerance) are derived following appropriate IES, CIE, and applicable standards.



**[EL]** Elliptical      **[N]** Narrow      **[EL-2]** Elliptical      **[MN]** Medium narrow

## Extras

Consult the factory

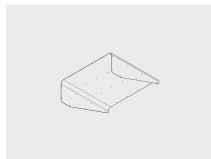
120-277V  
50/60Hz

**UNI**

120-277V 50/60Hz

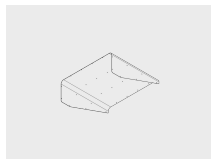
## Accessories (To be ordered separately)

Optical accessories



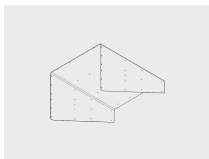
**Visor for REGIO V2  
1 Module**  
100139030

Optical accessories

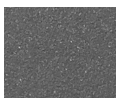


**Visor for REGIO V2  
2 Module**  
100139031

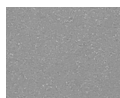
Optical accessories



**Visor for REGIO V2  
3 Module**  
100139032



**[HM3]**  
Anthracite  
grey



**[HM4]**  
Light grey



**[CC]**  
Custom  
colour  
(Please  
specify RAL  
code)