

# Pixo Catenary

25 | 38

10 - Black



Discreet, robust, and compact, the Pixo Catenary system consists of Pixo Retro Catenary features a classic filament look and Pixo Catenary a modern compact spotlight design.

The Pixo Catenary system offers luminaires with diameters of 25mm and 38mm and weights of approximately 100 grams each. There are no extra clunky power cables or typical catenary clutter, so the system is streamlined and simple. The Pixo Catenary system also requires minimal tension for mounting, reducing engineering complexity and project time.

Large public spaces, outdoor cafés, restaurants, and parks are ideal for indoor and outdoor applications.

**LED Sources:**

Pixo Retro Catenary Ambient light:  
CRI: 90 | CCT: 2200K  
Other CCT options: 2700K, 3000K

Pixo Catenary Spot light:  
CRI: 90 | CCT: 3000K  
Other CCT options: 2700K, 3500K, 4000K

**Accessories:**

- Pendant Cable
  - Standard Mounted
  - Pole / Tree Mounted
  - Wall Mounted
- See pages 4-5.

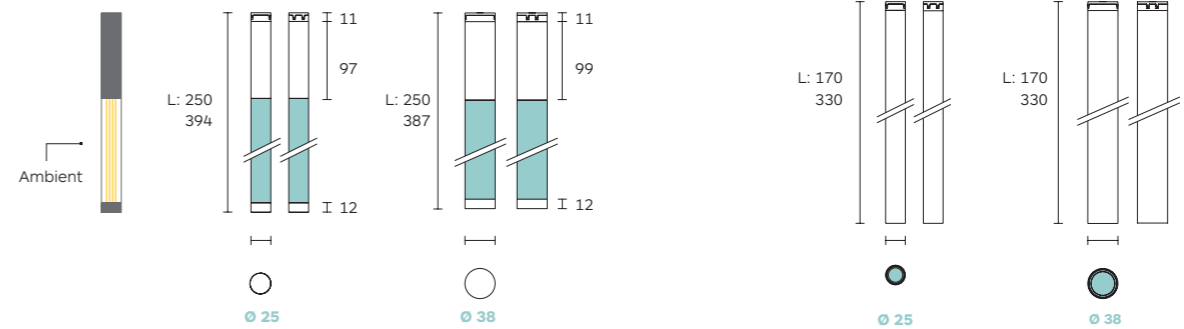
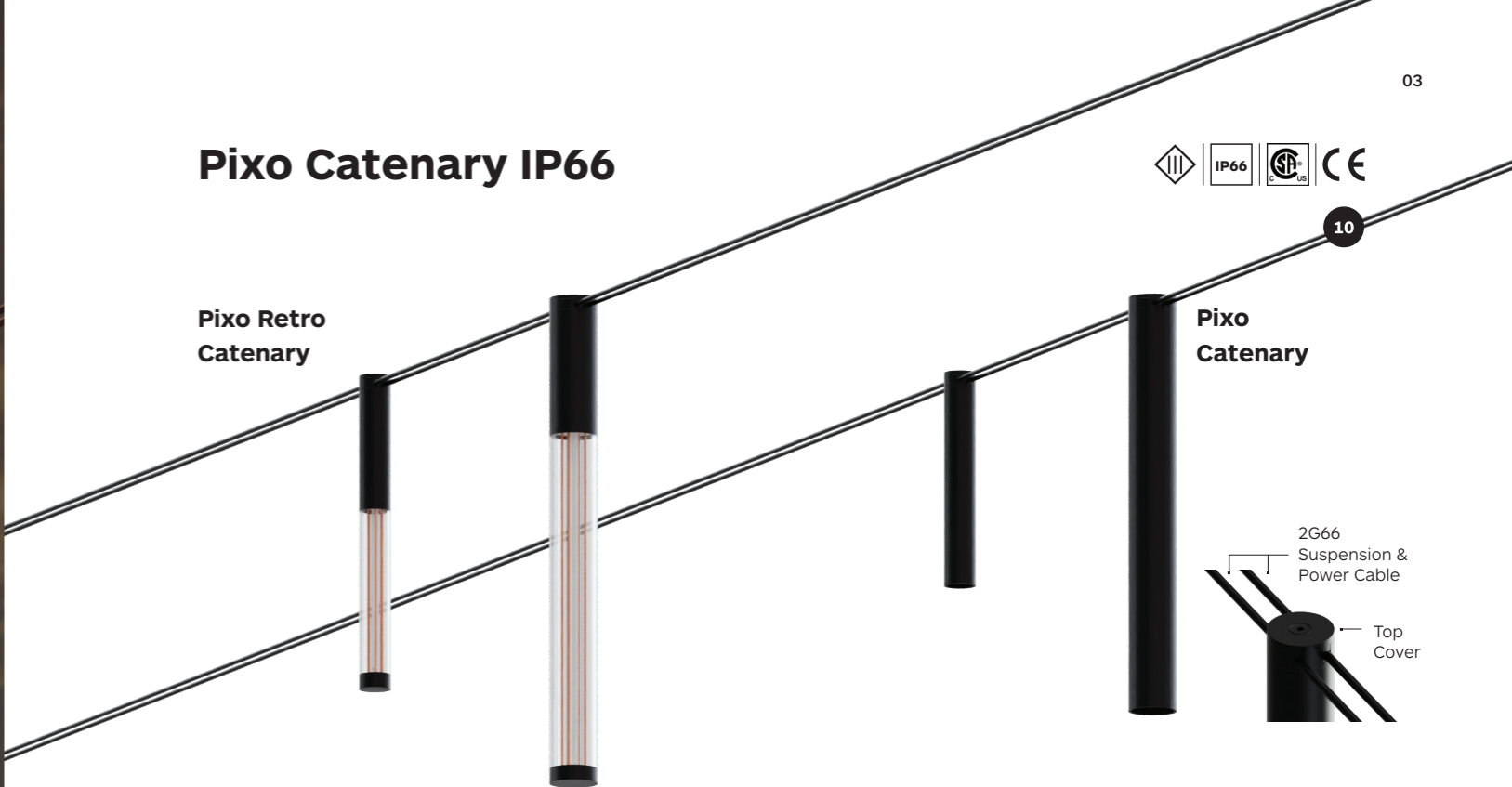
## Pixo Catenary IP66



10

### Pixo Retro Catenary

### Pixo Catenary



	Product Code	Length Code (L)	LED Power	Nominal Lumen	Beam Angle	Dimming Options	CCT Options
<b>CRI &gt; 90</b> <b>3000K</b>	Pixo Retro Catenary 25 L:250	<b>7316</b>	<b>0250</b>	4.9W	397 lm	/	<b>22</b> 2200K
	Pixo Retro Catenary 25 L:394	<b>7317</b>	<b>0394</b>				<b>27</b> 2700K
	Pixo Retro Catenary 38 L:250	<b>7322</b>	<b>0250</b>	4.9W	397 lm		<b>30</b> 3000K
	Pixo Retro Catenary 38 L:387	<b>7323</b>	<b>0387</b>				
	Pixo Catenary 25 L:170	<b>7312</b>	<b>0170</b>	2.8W	333 lm	<b>15° / 20° / 32°</b>	<b>27</b> 2700K
	Pixo Catenary 25 L:330	<b>7313</b>	<b>0330</b>				<b>30</b> 3000K
	Pixo Catenary 38 L:170	<b>7318</b>	<b>0170</b>	3.6W	426 lm	<b>20° / 26° / 36°</b>	<b>35</b> 3500K
	Pixo Catenary 38 L:330	<b>7319</b>	<b>0330</b>				<b>40</b> 4000K

# Accessories



**Product / Accessories** **Catenary plate mount**  
Available in colour 84

**Pixo Catenary**  
**2G26**

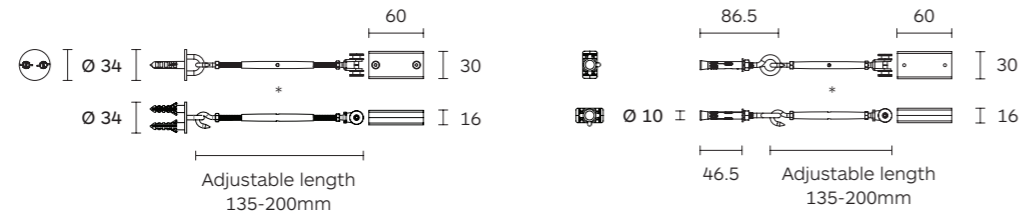
**Pixo Retro Catenary**



**Product / Accessories** **Eyebolt mount with concrete anchor screw**  
Available in colour 84

**Pixo Catenary**  
**2G28**

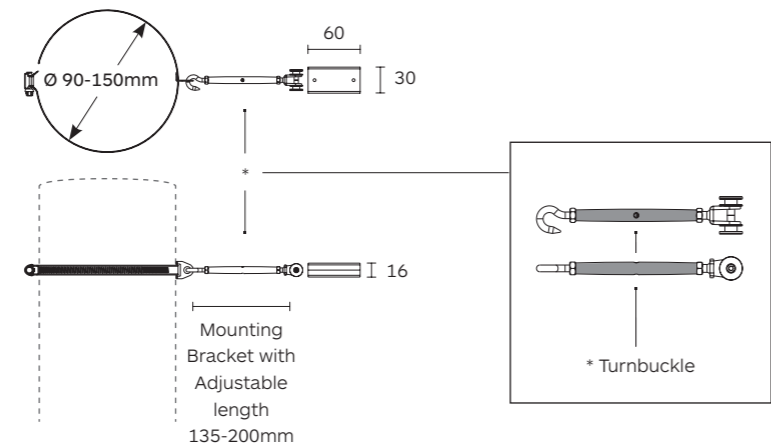
**Pixo Retro Catenary**



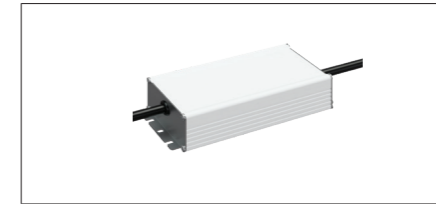
**Product / Accessories** **Tree or Pole mount**  
Available in colour 84

**Pixo Catenary**  
**2G27**

**Pixo Retro Catenary**



# Accessories



**Product / Accessories** **Power supply**  
IP67  
AC/DC Power, 220-240VAC input, 24VDC 150w output

**Pixo Catenary**  
**2G29\***

**Pixo Retro Catenary**



**Product / Accessories** **Waterproof connector**  
IP68  
For 220-240VAC input

**Pixo Catenary**  
**2577\***

**Pixo Retro Catenary**



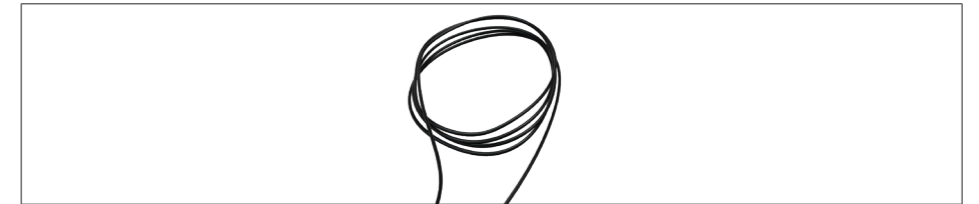
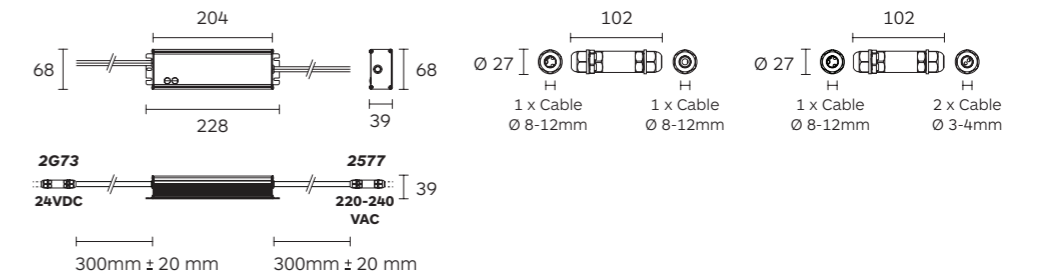
**Product / Accessories** **Waterproof connector**  
IP68  
For 24VDC output

**Pixo Catenary**  
**2G73\***

**Pixo Retro Catenary**

\* IP connectors are included with PSU Art#2G29.

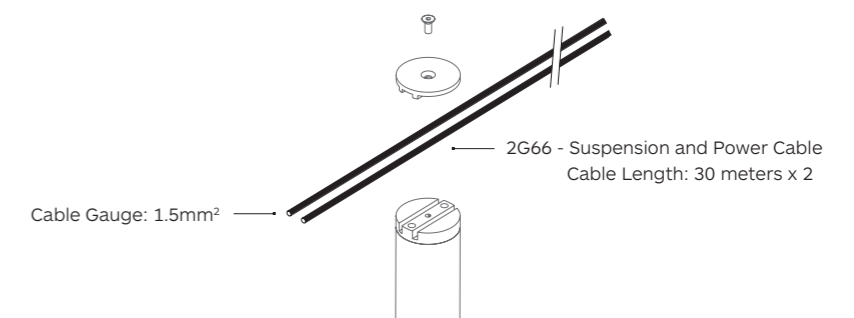
\* For outdoor applications, it is mandatory to use 2577 & 2G73.



**Product / Accessories** **Suspension and Power Cable**  
Available in colour 10

**Pixo Catenary**  
**2G66**

**Pixo Retro Catenary**





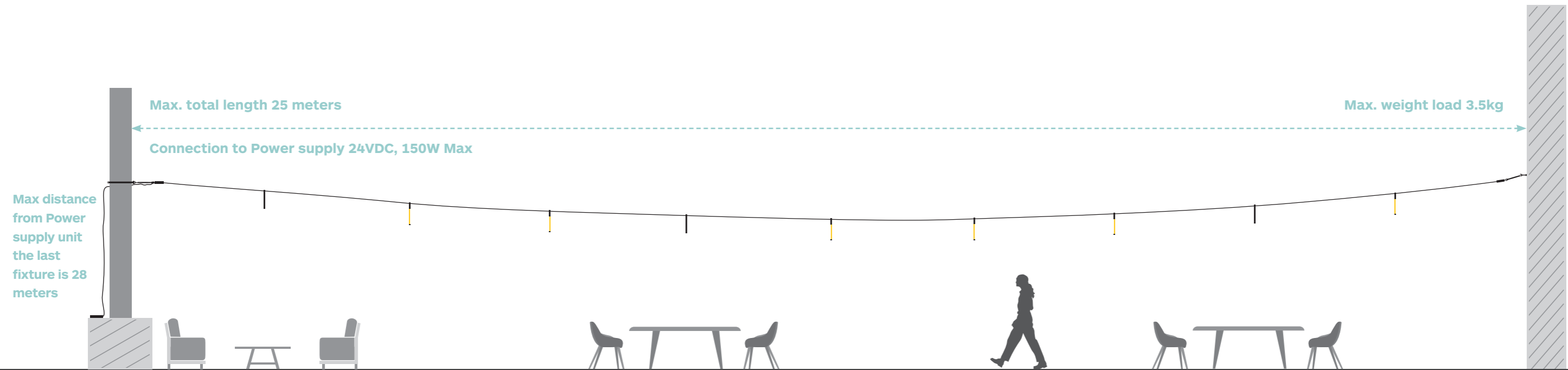
## Installation Guideline

Pixo Catenary system can support up to 25 meters of point-to-point suspension cables.  
The suspension cables are connected directly to a 24VDC power supply with a maximum power of 150W.

The maximum distance between the power supply and the last Pixo Catenary fixture can be 28m, assuming you use a Ø3mm, 1.5mm<sup>2</sup> cable and the max total weight load on the cables is 3.5kg.

Please refer to the weight and power table on the right to ensure that the total number of fixtures will not exceed the total power and weight limits.

Product Name	Product Code	Fixture Weight	LED Power	Max. Number of Units
Pixo Retro Catenary 25 L:250	<b>7316</b>	107g	4.9W	20 pcs
Pixo Retro Catenary 25 L:394	<b>7317</b>	135g	4.9W	20 pcs
Pixo Retro Catenary 38 L:250	<b>7322</b>	201g	4.9W	17 pcs
Pixo Retro Catenary 38 L:387	<b>7323</b>	263g	4.9W	13 pcs
Pixo Catenary 25 L:170	<b>7312</b>	122g	2.8W	20 pcs
Pixo Catenary 25 L:330	<b>7313</b>	200g	2.8W	17 pcs
Pixo Catenary 38 L:170	<b>7318</b>	237g	3.6W	14 pcs
Pixo Catenary 38 L:330	<b>7319</b>	360g	3.6W	9 pcs



Pixo Catenary works with standard 24VDC power supply units, for optimal results designated 24VDC Power Supply model **HLG-150H-24** is recommended.