

HANDRA

An Extraordinary Handrail Luminaire Family

CE UK CA IK10 IP65

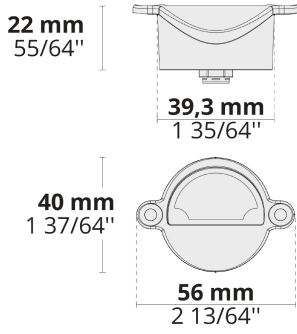


Uniform light distribution and easy installation capabilities make the HANDRA family the perfect choice for both new and retrofit handrail lighting applications.

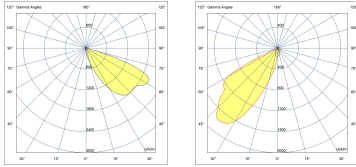
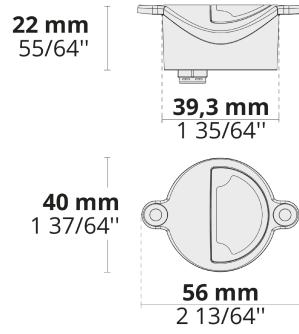
- Equipped with HEPER's Dyno (DYN) module
- Minimized glare with hidden light source
- Indirect lighting with reflector technology
- Asymmetric forward or side uniform light distribution
- Vandal resistant compact design
- Retrofit ready for standard dimension handrails
- Easy installation and maintenance with smart wiring system

Product code	Product name	Light distribution	Delivered lumens flux	Rated input power	Colour temperature	Control	Weight
LH5004.595-EN	HANDRA Forward - Ø48 mm	[SLFH] 44x46°	87 - 100 lm	1 W	2700 K CRI 80, 3000 K CRI 80, 4000 K CRI 70, 4000 K CRI 80		0.05 kg
LH5005.595-EN	HANDRA Side - Ø48 mm	[SLSH] 42x54°	40 - 48 lm	1 W	2700 K CRI 80, 3000 K CRI 80, 4000 K CRI 70, 4000 K CRI 80		0.05 kg
LH5006.595-EN	HANDRA Forward - Ø60 mm	[SLFH] 44x46°	87 - 100 lm	1 W	2700 K CRI 80, 3000 K CRI 80, 4000 K CRI 70, 4000 K CRI 80		0.05 kg
LH5007.595-EN	HANDRA Side - Ø60 mm	[SLSH] 42x54°	40 - 48 lm	1 W	2700 K CRI 80, 3000 K CRI 80, 4000 K CRI 70, 4000 K CRI 80		0.05 kg

LH5004.595 / LH5006.595



LH5005.595 / LH5007.595



[SLFH]

Special linear,
Forward throw

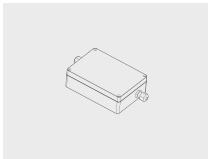


[SLSH]

Special linear,
Side throw

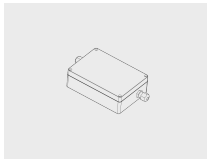
Accessories (To be ordered separately)

Mounting accessories



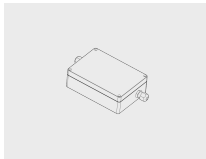
DALI & On/Off driver within an IP67 box for 1 to 6 HANDRA modules
007502063

Mounting accessories

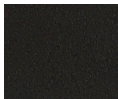


DALI & On/Off driver within an IP67 box for 7 to 15 HANDRA modules
007502064

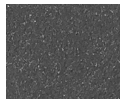
Mounting accessories



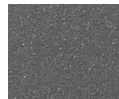
DALI & On/Off driver within an IP67 box for 16 to 35 HANDRA modules
007502065



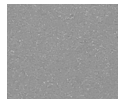
[HM1]
Black



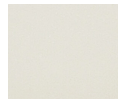
[HM2]
Dark grey



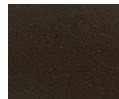
[HM3]
Anthracite grey



[HM4]
Light grey



[HM5]
White



[HM6]
Bronze



[CC]
Custom colour
(Please specify RAL code)