

PUNTO C

Flexible and Reliable Product Family

CE UK CA IK08 IP65



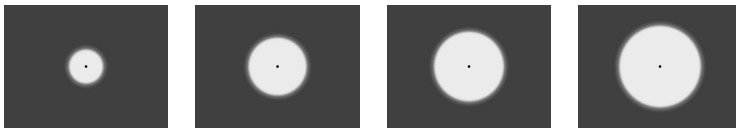
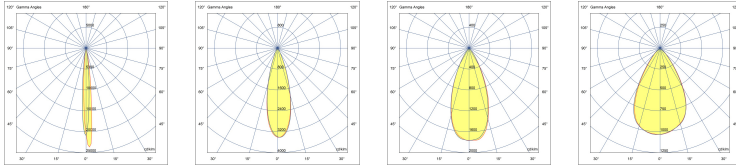
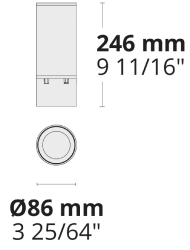
heper⁺



With its round form factor, advanced optics providing perfect beam control, and durable body PUNTO C family stand out for highlighting architectural details in modern projects.

- Equipped with HEPER's Hybrid (HYB) module [S] [N]
- Perfect beam control through multifaceted reflectors (HYB)
- 4 different light distribution options from very narrow to wide
- Easy installation and maintenance

Product code	Product name	Light distribution	Delivered lumens flux	Rated input power	Colour temperature	Control	Weight
LD8017.693-EN	PUNTO S C	[S] 7°, [N] 26°, [MN] 42°, [M] 60°	606 - 1019 lm	10 W	2700 K CRI 80, 3000 K CRI 80, 4000 K CRI 70, 4000 K CRI 80	On/Off	1.16 kg



[S] Spot
[N] Narrow
[MN] Medium narrow
[M] Medium

Extras

Consult the factory

120-277V
50/60Hz

UNI

120-277V 50/60Hz

Accessories (To be ordered separately)

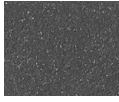
Optical accessories



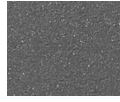
Visor for PUNTO S
007502282



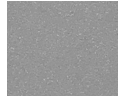
[HM1]
Black



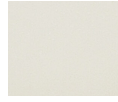
[HM2]
Dark grey



[HM3]
Anthracite
grey



[HM4]
Light grey



[HM5]
White



[HM6]
Bronze



[CC]
Custom
colour
(Please
specify RAL
code)