


VERTEX W

Functional beauty

CE UK CA IK08 IP66 

heper⁺

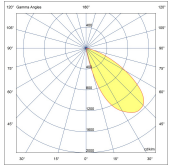
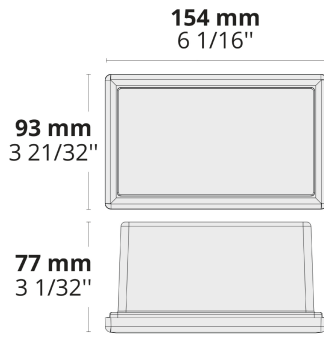


VERTEX W provides uniform light distribution with unique reflector technology and glare reduction with hidden light source.

- Equipped with HEPER's Dyno (DYN) module
- Superior glare management with hidden light source
- Indirect lighting with reflector technology
- Uniform light distribution with advanced reflector technology
- Modular structure allowing seamless integration

Product code	Product name	Light distribution	Delivered lumens flux	Rated input power	Colour temperature	Control	Weight
LW6064.591-EN	VERTEX W 1 Module	[SLFB] 144x41°	423 - 473 lm	8 W	2700 K CRI 80, 3000 K CRI 80, 4000 K CRI 70, 4000 K CRI 80	On/Off	4.51 kg

LW6064.591



[SLFB]

Special linear,
Forward throw

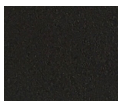
Extras

Consult the factory

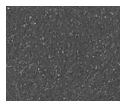
120-277V
50/60Hz

UNI

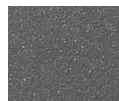
120-277V 50/60Hz



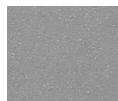
[HM1]
Black



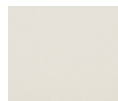
[HM2]
Dark grey



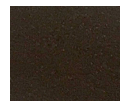
[HM3]
Anthracite
grey



[HM4]
Light grey



[HM5]
White



[HM6]
Bronze



[CC]
Custom
colour
(Please
specify RAL
code)

HPR Pazarlama A.Ş.
Başkent OSB 22. Cd. No: 2, Malıköy, Temelli,
Sincan, 06909 Ankara, Turkey
+90 312 267 54 30
info@hepergroup.com

HEPER Europe GmbH
Ahornweg 5a, 58675
Hemer, Germany
+49 237 2901 2975
infoEU@hepergroup.com

We reserve the right to change specifications
without prior written notice. Edition: 30.01.2024.
For current version visit heperlighting.com. All
flux ($\pm 7\%$ tolerance) and power values ($\pm 10\%$
tolerance) are derived following appropriate IES,
CIE, and applicable standards.