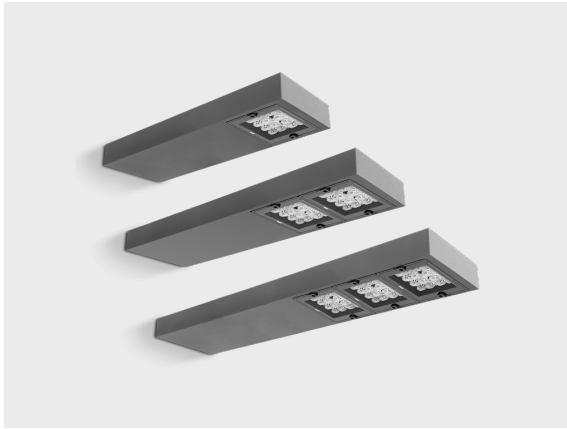
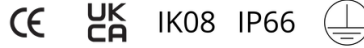


PRIFMA W

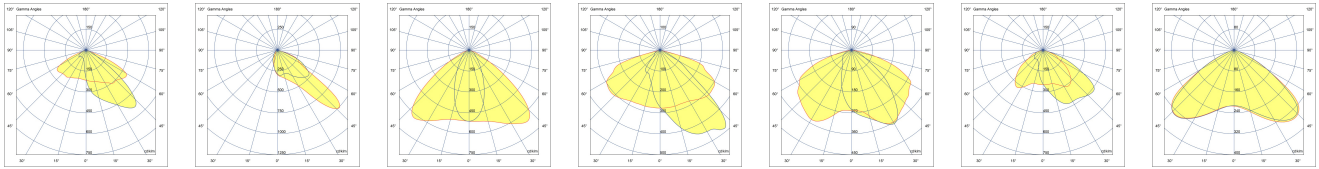
Scalable and Sleek Product Family



Clean lines, flexible optics, and modular structure make PRIFMA W stand out for wall-mounted site lighting applications.

- Equipped with HEPER's patented Milestone EVO (ML EVO) or AreaFlex (AFX) module
- Indirect lighting with reflector technology
- Flexible light distribution options from Type I through Type V (AFX)
- Uniform lighting distribution through multifaceted reflectors
- Easy installation and maintenance with modular structure

Product code	Product name	Light distribution	Delivered lumens flux	Rated input power	Colour temperature	Control	Weight
LW2042.681-EN	PRIFMA W ML EVO 1 Module	[T2] 130x85°	2909 - 3678 lm	35 W	2700 K CRI 80, 3000 K CRI 80, 4000 K CRI 70, 4000 K CRI 80	On/Off	4.5 kg
LW2042.682-EN	PRIFMA W ML EVO 2 Module	[T2] 130x85°	5819 - 7357 lm	70 W	2700 K CRI 80, 3000 K CRI 80, 4000 K CRI 70, 4000 K CRI 80	On/Off	5.5 kg
LW2042.683-EN	PRIFMA W ML EVO 3 Module	[T2] 130x85°	8733 - 11036 lm	104 W	2700 K CRI 80, 3000 K CRI 80, 4000 K CRI 70, 4000 K CRI 80	On/Off	6.5 kg
LW2042.861-EN	PRIFMA W AFX 1 Module	[P4] 20x78°, [T1] 111x48°, [T2] 133x48°, [T2-2] 149x54°, [T3] 143x63°, [T4] 117x64°, [T5] 117°	1975 - 4540 lm	18 - 35 W	2700 K CRI 80, 3000 K CRI 80, 4000 K CRI 70, 4000 K CRI 80	On/Off	4.30 kg
LW2042.862-EN	PRIFMA W AFX 2 Module	[P4] 20x78°, [T1] 111x48°, [T2] 133x48°, [T2-2] 149x54°, [T3] 143x63°, [T4] 117x64°, [T5] 117°	3785 - 9085 lm	34 - 67 W	2700 K CRI 80, 3000 K CRI 80, 4000 K CRI 70, 4000 K CRI 80	On/Off	5.3 kg
LW2042.863-EN	PRIFMA W AFX 3 Module	[P4] 20x78°, [T1] 111x48°, [T2] 133x48°, [T2-2] 149x54°, [T3] 143x63°, [T4] 117x64°, [T5] 117°	5675 - 13800 lm	50 - 100 W	2700 K CRI 80, 3000 K CRI 80, 4000 K CRI 70, 4000 K CRI 80	On/Off	6.3 kg



[T2] Type II, Asymmetric, Side throw
[P4] Special pedestrian road distribution-right side traffic
[T1] Type I, Asymmetric, Side throw
[T2-2] Type II, Asymmetric, Side throw
[T3] Type III, Asymmetric, Side throw
[T4] Type IV, Asymmetric, Forward throw
[T5] Type V, Symmetric

Extras

Light output

Consult the factory

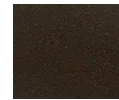
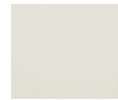
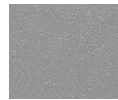
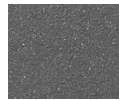
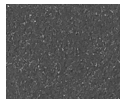
Luminaire body options



CLO
Constant light output

UNI
120-277V 50/60Hz

DPC
Double powder coating



[HM1]
Black

[HM2]
Dark grey

[HM3]
Anthracite grey

[HM4]
Light grey

[HM5]
White

[HM6]
Bronze

[CC]
Custom colour
(Please specify RAL code)