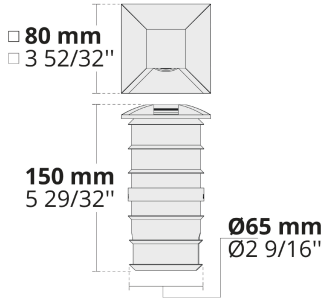


With its square form factor and four different lighting options, MINIKA family is a great choice to accentuate modern public spaces.

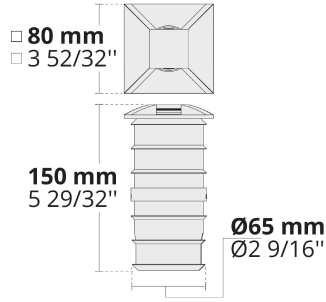
- Equipped with long-lasting high-power LEDs
- 4 different throw options
- Aluminum or stainless steel alternatives
- Easy installation with in-ground housing and IP rated connectors
- Vandal resistant compact design and nimble enough to fit in small spaces

Product code	Product name	Light distribution	Delivered lumens flux	Rated input power	Colour temperature	Control	Weight
LR9014.515-2x90-EN	MINIKA 2x90°	[C2-90] 180x50°	12 - 14 lm	1.7 W	2700 K CRI 80, 3000 K CRI 80, 4000 K CRI 70, 4000 K CRI 80	On/Off	0.66 kg
LR9014.515-3x90-EN	MINIKA 3x90°	[C3-90] 270x50°	19 - 22 lm	1.7 W	2700 K CRI 80, 3000 K CRI 80, 4000 K CRI 70, 4000 K CRI 80	On/Off	0.66 kg
LR9014.515-4x90-EN	MINIKA 4x90°	[C4-90] 270x50°	23 - 27 lm	1.7 W	2700 K CRI 80, 3000 K CRI 80, 4000 K CRI 70, 4000 K CRI 80	On/Off	0.66 kg
LR9014.515-90-EN	MINIKA 90°	[C1-90] 90x50°	7 - 8 lm	1.7 W	2700 K CRI 80, 3000 K CRI 80, 4000 K CRI 70, 4000 K CRI 80	On/Off	0.66 kg

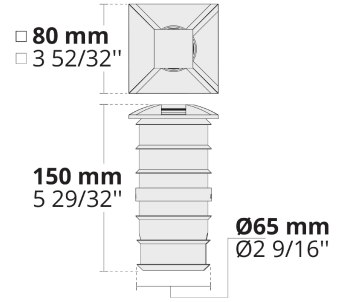
LR9014.515-90



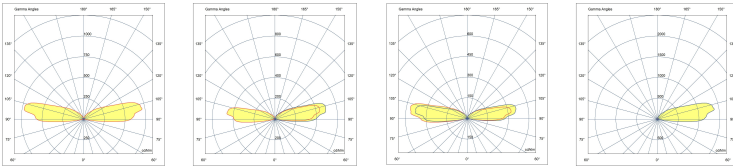
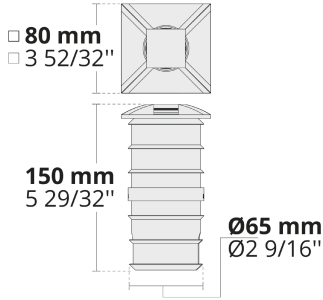
LR9014.515-2x90



LR9014.515-3x90



LR9014.515-4x90

**[C2-90]**Controlled,  
2 sides,  
2x90°**[C3-90]**Controlled,  
3 sides,  
3x90°**[C4-90]**Controlled,  
4 sides,  
4x90°**[C1-90]**Controlled,  
1 side,  
90°

## Extras

Consult the factory

Luminaire body options

120-277V  
50/60Hz**UNI**

120-277V 50/60Hz

**SS****SS**

Stainless steel housing

## Accessories (Included)

Mounting accessories

Mounting accessories

## Accessories (To be ordered separately)

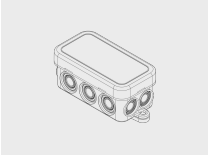
Mounting accessories

### HPR Pazarlama A.Ş.

Başkent OSB 22. Cd. No: 2, Malıköy, Temelli,  
Sincan, 06909 Ankara, Turkey  
+90 312 267 54 30  
info@hepergroup.com

### HEPER Europe GmbH

Ahornweg 5a, 58675  
Hemer, Germany  
+49 237 2901 2975  
infoEU@hepergroup.comWe reserve the right to change specifications  
without prior written notice. Edition: 26.01.2024.  
For current version visit [heperlighting.com](http://heperlighting.com). All  
flux (±%7 tolerance) and power values (±%10  
tolerance) are derived following appropriate IES,  
CIE, and applicable standards.



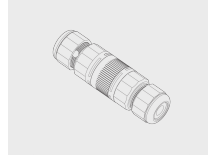
**Junction Box for  
MINIMO-MINIKA**

141901034



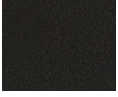
**Plastic case for  
MINIMO/MINIKA**

160401101

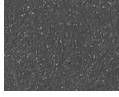


**Connector set - 5-  
pole**

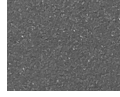
141407400



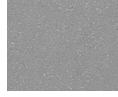
**[HM1]**  
Black



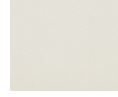
**[HM2]**  
Dark grey



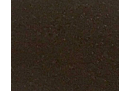
**[HM3]**  
Anthracite  
grey



**[HM4]**  
Light grey



**[HM5]**  
White



**[HM6]**  
Bronze



**[CC]**  
Custom  
colour  
(Please  
specify RAL  
code)