

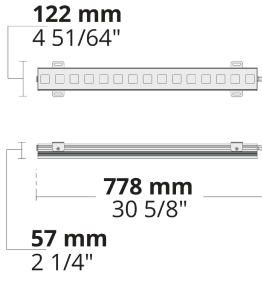


Multiple lengths, optical possibilities, and various mounting options make the AQA family stand out for the illumination tasks of contemporary architectural projects.

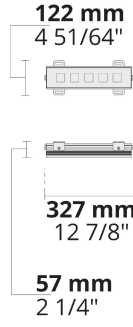
- Equipped with long-lasting high-power LEDs
- 4 different light distribution options from narrow to elliptical
- Various mounting possibilities with angle adjustment bracket or long bracket
- Easy installation and maintenance
- Different lengths and lumen packages in order to comply with any project needs

Product code	Product name	Light distribution	Delivered lumens flux	Rated input power	Colour temperature	Control	Weight
LW7034.557-EN	AQSA 0.3 m	[EL] 147x106°, [EL-2] 41x13°, [N] 20°, [MN] 35°, [M] 65°,	540 - 1517 lm	6 - 12 W	2700 K CRI 80, 3000 K CRI 80, 4000 K CRI 70, 4000 K CRI 80	On/Off, DALI	1.68 kg
LW7034.558-EN	AQSA 0.5 m	[EL] 147x106°, [EL-2] 41x13°, [N] 20°, [MN] 35°, [M] 65°,	1080 - 3034 lm	11 - 22 W	2700 K CRI 80, 3000 K CRI 80, 4000 K CRI 70, 4000 K CRI 80	On/Off, DALI	2.64 kg
LW7034.516-EN	AQSA 0.75 m	[EL] 147x106°, [EL-2] 41x13°, [N] 20°, [MN] 35°, [M] 65°,	1620 - 4551 lm	16 - 33 W	2700 K CRI 80, 3000 K CRI 80, 4000 K CRI 70, 4000 K CRI 80	On/Off, DALI	3.57 kg
LW7034.559-EN	AQSA 1 m	[EL] 147x106°, [EL-2] 41x13°, [N] 20°, [MN] 35°, [M] 65°,	2157 - 6068 lm	22 - 44 W	2700 K CRI 80, 3000 K CRI 80, 4000 K CRI 70, 4000 K CRI 80	On/Off, DALI	5 kg

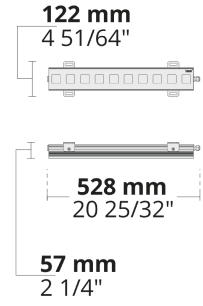
LW7034.516-EN



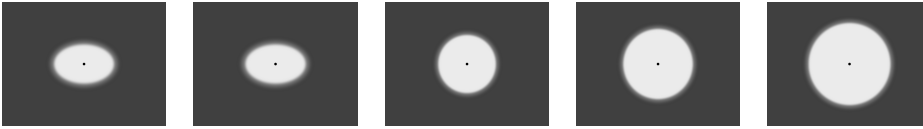
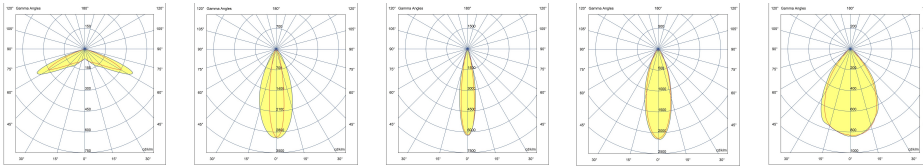
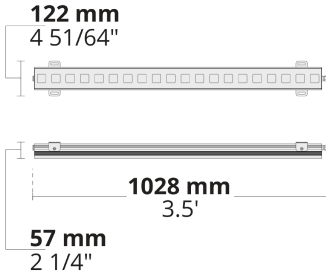
LW7034.557-EN



LW7034.558-EN



LW7034.559-EN



[EL]
Elliptical

[EL-2]
Elliptical

[N]
Narrow

[MN]
Medium narrow

[M]
Medium

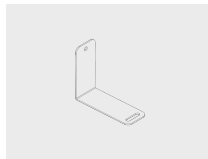
Extras

Mounting options



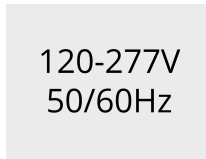
ASB
Angle setting bracket

Mounting options

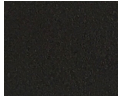


LB
Long bracket

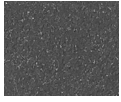
Consult the factory



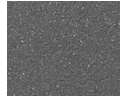
UNI
120-277V 50/60Hz



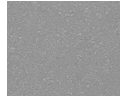
[HM1]
Black



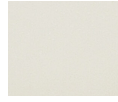
[HM2]
Dark grey



[HM3]
Anthracite
grey



[HM4]
Light grey



[HM5]
White



[HM6]
Bronze



[CC]
Custom
colour
(Please
specify RAL
code)