

TURA

Highly Flexible and Functional Pole-top Family



IK08 IP66



Precise light distribution and endless optical possibilities make TURA stand out for area and street lighting applications.

- Equipped with high-efficiency and long-lasting LED light source
- PMMA lenses with high optical adaptability
- Outstanding thermal management through the high-grade aluminum body
- Further flexibility with +15/-15 tilt angle
- Auto on-off switch during maintenance
- Tool-less access to housing

Product code	Product name	Light distribution	Delivered lumens flux	Rated input power	Colour temperature	Control	Weight
LL2036.751-EN	TURA 1x12 LED	[P4] 22x77°, [T1] 113x48°, [T2] 137x52°, [T2-2] 150x60°, [T2BL] 128x48°, [T3] 143x68°, [T3-2] 158x59°, [T3BL] 128x50°, [T4] 121x70°, [T4BL] 111x38°	2436 - 3437 lm	28 W	3000 K CRI 70, 3000 K CRI 80, 4000 K CRI 70	On/Off, DALI, AutoDIM, StepDIM	10 kg
LL2036.752-EN	TURA 2x12 LED	[P4] 22x77°, [T1] 113x48°, [T2] 137x52°, [T2-2] 150x60°, [T2BL] 128x48°, [T3] 143x68°, [T3-2] 158x59°, [T3BL] 128x50°, [T4] 121x70°, [T4BL] 111x38°	4872 - 6891 lm	52 W	3000 K CRI 70, 3000 K CRI 80, 4000 K CRI 70	On/Off, DALI, AutoDIM, StepDIM	10 kg
LL2036.753-EN	TURA 3x12 LED	[P4] 22x77°, [T1] 113x48°, [T2] 137x52°, [T2-2] 150x60°, [T2BL] 128x48°, [T3] 143x68°, [T3-2] 158x59°, [T3BL] 128x50°, [T4] 121x70°, [T4BL] 127x32°	7308 - 10307 lm	80 W	3000 K CRI 70, 3000 K CRI 80, 4000 K CRI 70	On/Off, DALI, AutoDIM, StepDIM	10 kg
LL2036.754-EN	TURA 4x12 LED	[P4] 22x77°, [T1] 113x48°, [T2] 137x52°, [T2-2] 150x60°, [T2BL] , [T3] 143x68°, [T3-2] 158x59°, [T3BL] , [T4] 121x70°, [T4BL] 111x38°	9744 - 13744 lm	105 W	3000 K CRI 70, 3000 K CRI 80, 4000 K CRI 70	On/Off, DALI, AutoDIM, StepDIM	10 kg
LL2036.755-EN	TURA 1x16 LED	[T2] 137x52°, [T3] 143x68°	3443 - 4105 lm	35 W	3000 K CRI 70, 3000 K CRI 80, 4000 K CRI 70	On/Off, DALI, AutoDIM, StepDIM	10 kg

HPR Pazarlama A.Ş.

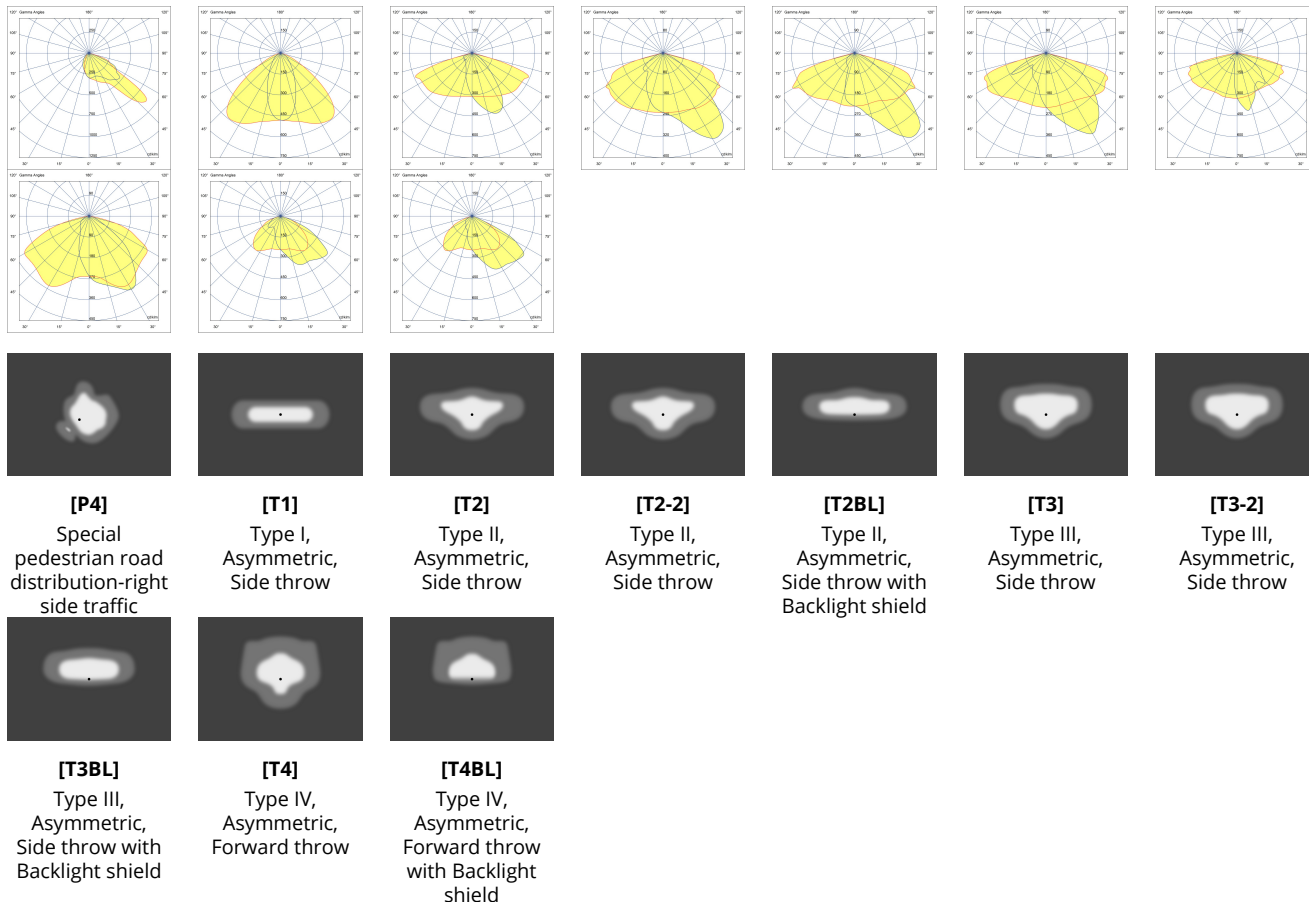
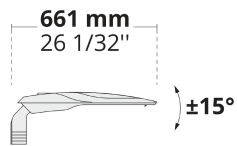
Başkent OSB 22. Cd. No: 2, Malıköy, Temelli,
Sincan, 06909 Ankara, Turkey
+90 312 267 54 30
info@hepergroup.com

HEPER Europe GmbH

Ahornweg 5a, 58675
Hemer, Germany
+49 237 2901 2975
infoEU@hepergroup.com

We reserve the right to change specifications without prior written notice. Edition: 26.01.2024.
For current version visit heperlighting.com. All flux (±%7 tolerance) and power values (±%10 tolerance) are derived following appropriate IES, CIE, and applicable standards.

LL2036.756-EN	TURA 2x16 LED	[T2] 137x52°, [T3] 143x68°,	7746 - 9234 lm	70 W	3000 K CRI 70, 3000 K CRI 80, 4000 K CRI 70	On/Off, DALI, AutoDIM, StepDIM	10 kg
LL2036.757-EN	TURA 3x16 LED	[T2] 137x52°, [T3] 143x68°,	10329 - 12314 lm	105 W	3000 K CRI 70, 3000 K CRI 80, 4000 K CRI 70	On/Off, DALI, AutoDIM, StepDIM	10 kg
LL2036.758-EN	TURA 4x16 LED	[T2] 137x52°, [T3] 143x68°,	15196 - 16418 lm	136 W	3000 K CRI 70, 3000 K CRI 80, 4000 K CRI 70	On/Off, DALI, AutoDIM, StepDIM	11.5 kg



Extras

External surge protection



SP10
10 kV

Connectivity



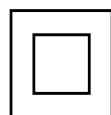
NM7
NEMA socket - 7 Pin

Light output



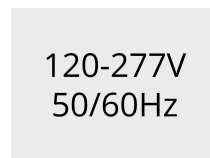
CLO
Constant light output

Consult the factory



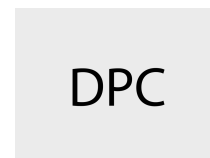
C2
Class II

Consult the factory

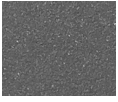


UNI
120-277V 50/60Hz

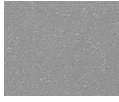
Luminaire body options



DPC
Double powder coating



[HM3]
Anthracite
grey



[HM4]
Light grey



[CC]
Custom
colour
(Please
specify RAL
code)