

SPARK

Flexible, Stylish and Multi-functional
Floodlight Family

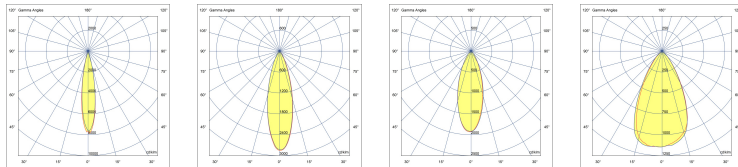
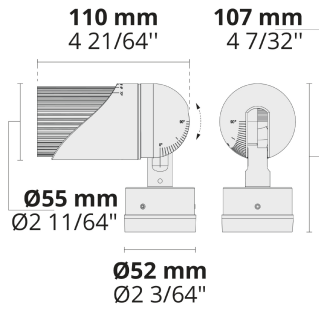
CE UK CA IK07 IP66



SPARK is a product family that came into play for application in façade and landscape lighting. SPARK is a highly flexible and versatile product usable in different fields thanks to its rich accessories.

- Equipped with high efficacy COB LED with long time reliability
- 4 different light distribution options from very narrow to wide
- Anodized aluminum body with knurled surface improves the thermal management
- Easy locking system for fine tuning and aiming
- 0°/+355° rotatable, 0°/+90° tiltable mechanism allows precise positioning of the light beam
- Multiple mounting options thanks to its rich accessories such as tree strap, wall bracket and spike

Product code	Product name	Light distribution	Delivered lumens flux	Rated input power	Colour temperature	Control	Weight
LF8040.529-EN	SPARK	[VN] 18°, [N] 24°, [MN] 36°, [M] 60°	590 - 727 lm	10 W	2700 K CRI 90, 3000 K CRI 80, 3000 K CRI 90		0.43 kg



[VN] Very narrow **[N]** Narrow **[MN]** Medium narrow **[M]** Medium

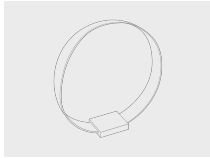
Extras

Light output	Light output	Light output	Light output	Light output	Light output
BCF Blue Colour Filter	GCF Green Colour Filter	HNY Honeycomb	OCF Orange Colour Filter	RCF Red Colour Filter	YCF Yellow Colour Filter

Mounting options	Mounting options	Luminaire body options
		DPC
PM Pole Mount	WM Wall Mount	DPC Double powder coating

Accessories (To be ordered separately)

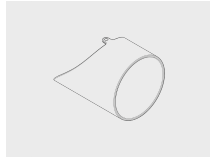
Mounting accessories Mounting accessories Optical accessories



Tree belt for SPARK
180901194

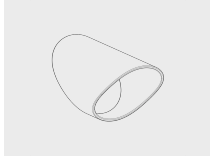


Spike
160405040



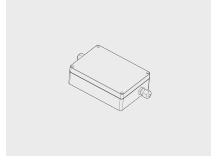
Visor for SPARK
101652204

Optical accessories



Snoot for SPARK
101652202

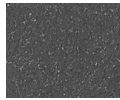
Mounting accessories



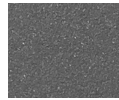
DALI & On/Off driver within an IP67 box for SPARK
007502121



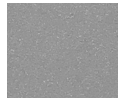
[HM1]
Black



[HM2]
Dark grey



[HM3]
Anthracite grey



[HM4]
Light grey



[HM5]
White



[HM6]
Bronze



[CC]
Custom colour
(Please specify RAL code)