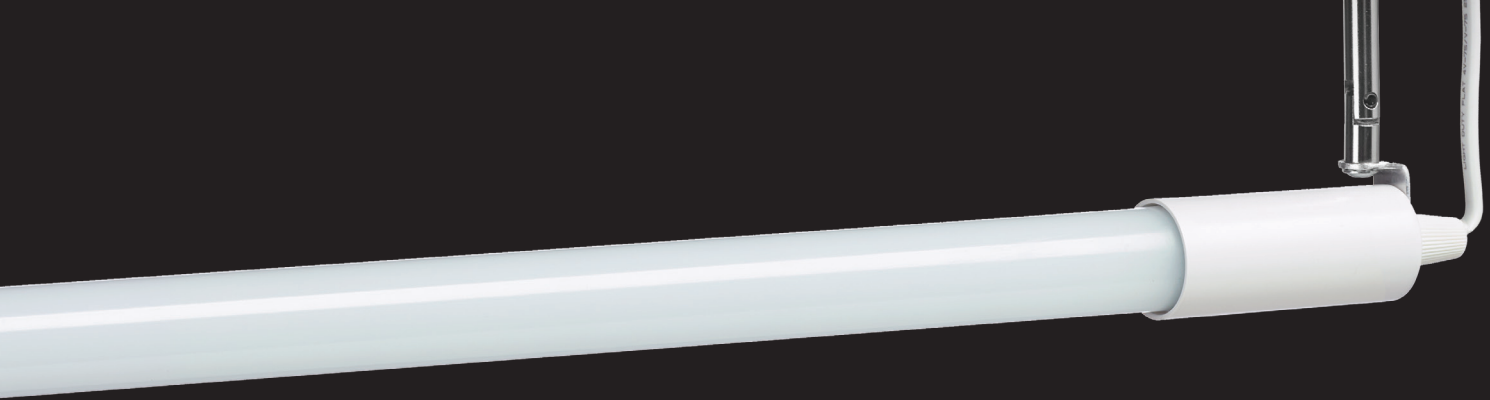




HFI LED STICK-LITE

INTEGRAL DRIVER





Suspended/Surface mounted.

A ROBUST LED FITTING WITH ITS DRIVER INCORPORATED WITHIN THE GLANDED END CAP.

The slim fitting offers 360° of light distribution and seamlessly incorporates many colours with the use of our coloured sleeves. Simply unscrew the blank end cap, slide the sleeve over the top and replace. The LED Stick-Lite is an incredibly versatile linear lighting solution and will run 240V AC. The LED Stick-Lite makes use of high-quality LED's. Widely used for window displays, lighting features and within the TV and theatre industry.

Light Source Information

- LED, Integral Driver.
- Available in 3000K & 4000K.

Options

White or black end caps.
UK or Euro plug available.

Dimming

Not available with this product.

Installation

Horizontal, angled suspension, surface mounted or vertical with its own cable.

3 metres of cable. More cable colours available on request. Longer cable with no plug available at an extra charge.

Optics

Polycarbonate Satin Diffuser. Can be used with DDP colours light red, light orange, ice blue, sky blue, chrome green, candy pink, pink & candlelight. Larger selection of colours available with our COS sleeves.



Suspension Kit



DDP Coloured Sleeves



Mounting Clips

Part No.	Length (mm)	Illuminated Length (mm)	Lumens	Circuit Power (W)
HFI LED 5	590	470	1250	11
HFI LED 10	1100	980	1885	16
HFI LED 15	1575	1460	2600	21



Tube ø 26mm



Cap ø 30mm



Light output 360°

For further information

Call: +44 (0)1525 376974

Email: reply@encapsulite.co.uk
or visit www.encapsulite.co.uk