

PINUS

Matchless and Contemporary Pole-top Family

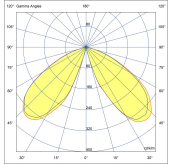
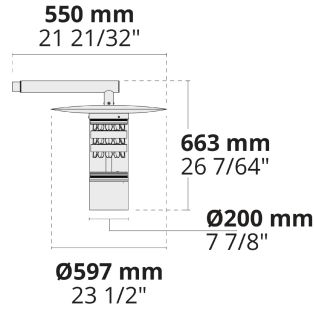
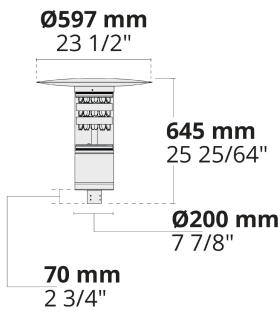
CE UK CA IK08 IP65 



PINUS is a luminaire able to provide maximum visual comfort with its optical system DYN0, known for minimizing glare and distributing the light symmetrically making PINUS perfectly adapt to the architecture of cities with its flexible structure. The PINUS is also available as a pendant luminaire. This makes it preferably suited for constructively and sensationally illuminating various areas.

- Equipped with HEPER's Dyno (DYN) module
- Minimized glare with hidden light source
- Flexible use with different light distribution and output options
- Uniform light distribution with specially designed reflectors
- Surface or pole-mount options with multiple layout alternatives
- Unique design combining modern and traditional touches
- Easy installation and maintenance

Product code	Product name	Light distribution	Delivered lumens flux	Rated input power	Colour temperature	Control	Weight
LP4075.538-EN	PINUS	[SYM] 124°	4486 - 6906 lm	50 - 70 W	2700 K CRI 80, 3000 K CRI 80, 4000 K CRI 70, 4000 K CRI 80	0-10V, AutoDIM, StepDIM	10 kg
LP4075.844-EN	PINUS, 360°, 2 Module	[SYM] 118°	4035 - 4940 lm	52 W	2700 K CRI 80, 3000 K CRI 80, 4000 K CRI 70, 4000 K CRI 80	On/Off, DALI, AutoDIM, StepDIM	8.59 kg
LP4075.846-EN	PINUS, 360°, 3 Module	[SYM] 118°	6140 - 7515 lm	78 W	2700 K CRI 80, 3000 K CRI 80, 4000 K CRI 70, 4000 K CRI 80	On/Off, DALI, AutoDIM, StepDIM	9.07 kg
LP4076.844-EN	PINUS Pendant, 360°, 2 Module	[SYM] 118°	4035 - 4940 lm	52 W	2700 K CRI 80, 3000 K CRI 80, 4000 K CRI 70, 4000 K CRI 80	On/Off, DALI, AutoDIM, StepDIM	9.42 kg
LP4076.846-EN	PINUS Pendant, 360°, 3 Module	[SYM] 118°	6140 - 7515 lm	78 W	2700 K CRI 80, 3000 K CRI 80, 4000 K CRI 70, 4000 K CRI 80	On/Off, DALI, AutoDIM, StepDIM	9.91 kg



[SYM]
Symmetric

Extras

External surge protection



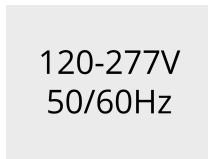
SP10
10 kV

Light output

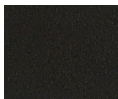


CLO
Constant light output

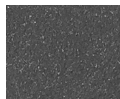
Consult the factory



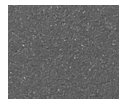
UNI
120-277V 50/60Hz



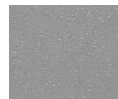
[HM1]
Black



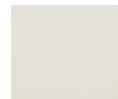
[HM2]
Dark grey



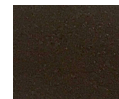
[HM3]
Anthracite grey



[HM4]
Light grey



[HM5]
White



[HM6]
Bronze



[CC]
Custom colour
(Please specify RAL code)