

KREIS

Highly Practical, Elegant, Aesthetic
Post-top Family with Modern Design

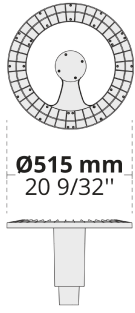


With the combination of long-life and maximum efficiency optics coming into play with a modern aesthetic structure and strong engineering fundamentals, KREIS becomes obscure yet still supports the illumination tasks for modern cities and other open spaces.

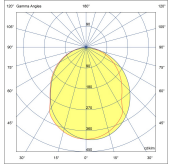
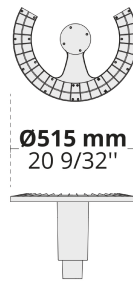
- Equipped with high-efficiency and long-lasting LED light source
- Superior glare management with diffused glass
- Uniform light distribution with high level of operating efficiency
- Optimized thermal design resulting in longer life cycle
- Modern and elegant design creating a unique touch in exterior applications

Product code	Product name	Light distribution	Delivered lumens flux	Rated input power	Colour temperature	Control	Weight
LL2031.511-EN	KREIS	[SYM] 100°,	5287 - 5737 lm	60 W	2700 K CRI 80, 3000 K CRI 80, 4000 K CRI 70, 4000 K CRI 80	On/Off, DALI, AutoDIM, StepDIM	5.33 kg
LL2039.517-EN	KREIS C	[SYM] 97x102°,	3465 - 4046 lm	40 W	2700 K CRI 80, 3000 K CRI 80, 4000 K CRI 70, 4000 K CRI 80	On/Off, DALI, AutoDIM, StepDIM	4.3 kg

LL2031.511



LL2039.517



[SYM]
Symmetric

Extras

External surge protection



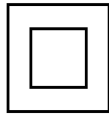
SP10
10 kV

Light output



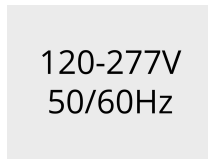
CLO
Constant light output

Consult the factory



C2
Class II

Consult the factory

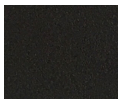


UNI
120-277V 50/60Hz

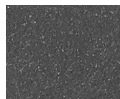
Luminaire body options



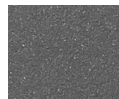
DPC
Double powder coating



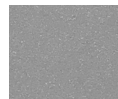
[HM1]
Black



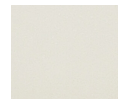
[HM2]
Dark grey



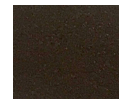
[HM3]
Anthracite grey



[HM4]
Light grey



[HM5]
White



[HM6]
Bronze



[CC]
Custom colour
(Please specify RAL code)