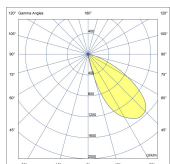
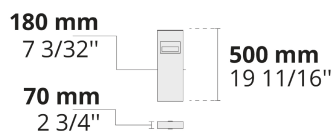




Modular structure, precise optics, and minimalist design make the VERTEX family stand out to illuminate pathways, landscaped areas, and other public spaces.

- Equipped with HEPER's Dyno (DYN) module
- Superior glare management with hidden light source
- Indirect lighting with reflector technology
- Easy installation and maintenance with modular structure

Product code	Product name	Light distribution	Delivered lumens flux	Rated input power	Colour temperature	Control	Weight
LB6064.591-EN	VERTEX 1 Module	[SLFB] 144x41°	423 - 473 lm	8 W	2700 K CRI 80, 3000 K CRI 80, 4000 K CRI 70, 4000 K CRI 80	On/Off	4.51 kg



[SLFB]

Special linear,
Forward throw

Extras

Consult the factory

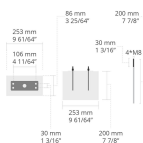
120-277V
50/60Hz

UNI

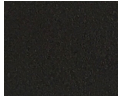
120-277V 50/60Hz

Accessories (To be ordered separately)

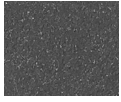
Anchorage



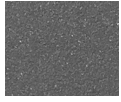
6281005
6281005



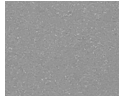
[HM1]
Black



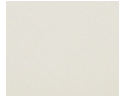
[HM2]
Dark grey



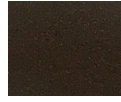
[HM3]
Anthracite
grey



[HM4]
Light grey



[HM5]
White



[HM6]
Bronze



[CC]
Custom
colour
(Please
specify RAL
code)