

D-LIGHT V2

Technologically Advanced and Modular Pole-top Fixture Family

CE UK CA IK08 IP66 

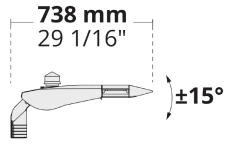


Precise light distribution, modular assembly structure, and flexible optics make D-LIGHT V2 stand out for area and street lighting applications.

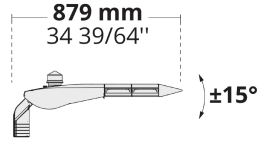
- Equipped with HEPER's patented Milestone EVO (ML EVO) module
- Superior glare management with hidden light source
- Indirect lighting with reflector technology
- Uniform lighting distribution through multifaceted reflectors
- Auto on-off switch during maintenance
- Easy installation and maintenance with modular structure
- Tool-less access to housing

Product code	Product name	Light distribution	Delivered lumens flux	Rated input power	Colour temperature	Control	Weight
LL2034.681-EN	D-LIGHT ML EVO 1 Module	[T2] 130x85°	2945 - 3563 lm	35 W	3000 K CRI 70, 3000 K CRI 80, 4000 K CRI 70	On/Off, DALI, AutoDIM, StepDIM	7 kg
LL2034.682-EN	D-LIGHT ML EVO 2 Module	[T2] 130x85°	5891 - 7127 lm	70 W	3000 K CRI 70, 3000 K CRI 80, 4000 K CRI 70	On/Off, DALI, AutoDIM, StepDIM	8.25 kg
LL2034.683-EN	D-LIGHT ML EVO 3 Module	[T2] 130x85°	8837 - 10691 lm	104 W	3000 K CRI 70, 3000 K CRI 80, 4000 K CRI 70	On/Off, DALI, AutoDIM, StepDIM	9.47 kg
LL2034.684-EN	D-LIGHT ML EVO 4 Module	[T2] 130x85°	11783 - 14255 lm	136 W	3000 K CRI 70, 3000 K CRI 80, 4000 K CRI 70	On/Off, DALI, AutoDIM, StepDIM	10.68 kg

LL2034.681



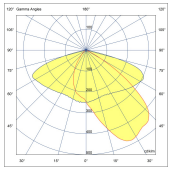
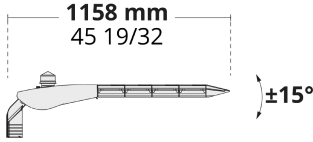
LL2034.682



LL2034.683



LL2034.684

**[T2]**

Type II,
Asymmetric,
Side throw

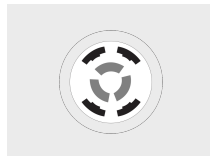
Extras

External surge
protection



SP10
10 kV

Connectivity



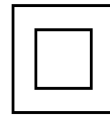
NM7
NEMA socket - 7 Pin

Light output



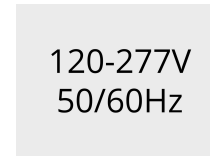
CLO
Constant light output

Consult the factory



C2
Class II

Consult the factory

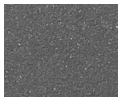


UNI
120-277V 50/60Hz

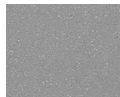
Luminaire body options



DPC
Double powder
coating



[HM3]
Anthracite
grey



[HM4]
Light grey



[CC]
Custom
colour
(Please
specify RAL
code)