

D-LIGHT

Technologically Advanced and Modular Pole-top Fixture Family



IK08 IP66



Precise light distribution, unique design, and flexible optics make D-LIGHT stand out for area and street lighting applications.

- Equipped with HEPER's patented Milestone (ML) or AreaFlex (AFX) module
- Minimized glare with hidden light source (ML)
- Indirect lighting with reflector technology
- Flexible light distribution options from Type I through Type V (AFX)
- Uniform lighting distribution through multifaceted reflectors
- Superior thermal management with upward aligned LED chips
- Auto on-off switch during maintenance
- Easy installation and maintenance with modular structure
- Tool-less access to housing

Product code	Product name	Light distribution	Delivered lumens flux	Rated input power	Colour temperature	Control	Weight
LL2023.671-EN	D-LIGHT ML 1 Module	[T2] 130x85°,	2945 - 3563 lm	35 W	3000 K CRI 70, 3000 K CRI 80, 4000 K CRI 70	On/Off, DALI, AutoDIM, StepDIM	7.08 kg
LL2023.672-EN	D-LIGHT ML 2 Module	[T2] 130x85°,	5891 - 7127 lm	68 W	3000 K CRI 70, 3000 K CRI 80, 4000 K CRI 70	On/Off, DALI, AutoDIM, StepDIM	8.63 kg
LL2023.673-EN	D-LIGHT ML 3 Module	[T2] 130x85°,	8837 - 10691 lm	101 W	3000 K CRI 70, 3000 K CRI 80, 4000 K CRI 70	On/Off, DALI, AutoDIM, StepDIM	10.18 kg
LL2023.674-EN	D-LIGHT ML 4 Module	[T2] 130x85°,	11783 - 14255 lm	137 W	3000 K CRI 70, 3000 K CRI 80, 4000 K CRI 70	On/Off, DALI, AutoDIM, StepDIM	11.73 kg
LL2023.861-EN	D-LIGHT AFX 1 Module	[P4] 20x78°, [T1] 111x48°, [T2] 133x48°, [T2-2] 149x54°, [T3] 143x63°, [T4] 117x64°, [T5] 117°,	1975 - 4540 lm	18 - 35 W	3000 K CRI 70, 3000 K CRI 80, 4000 K CRI 70	On/Off, DALI, AutoDIM, StepDIM	6.71 kg
LL2023.862-EN	D-LIGHT AFX 2 Module	[P4] 20x78°, [T1] 111x48°, [T2] 133x48°, [T2-2] 149x54°, [T3] 143x63°, [T4] 117x64°, [T5] 117°,	3785 - 9085 lm	34 - 67 W	3000 K CRI 70, 3000 K CRI 80, 4000 K CRI 70	On/Off, DALI, AutoDIM, StepDIM	7.67 kg
LL2023.863-EN	D-LIGHT AFX 3 Module	[P4] 20x78°, [T1] 111x48°, [T2] 133x48°, [T2-2] 149x54°, [T3] 143x63°, [T4] 117x64°, [T5] 117°,	5675 - 13800 lm	50 - 100 W	3000 K CRI 70, 3000 K CRI 80, 4000 K CRI 70	On/Off, DALI, AutoDIM, StepDIM	8.68 kg

HPR Pazarlama A.Ş.

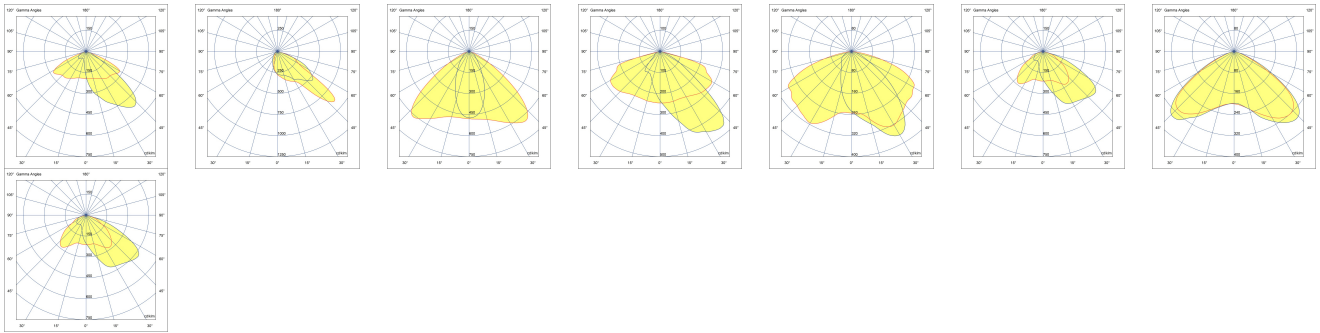
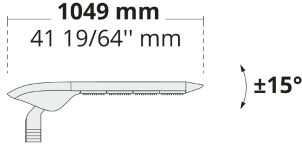
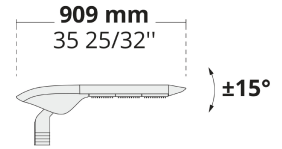
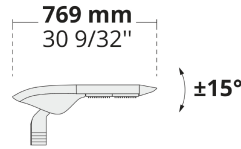
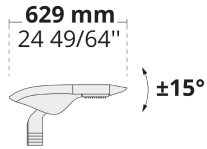
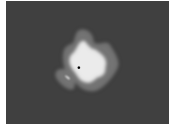
Başkent OSB 22. Cd. No: 2, Malıköy, Temelli,
Sincan, 06909 Ankara, Turkey
+90 312 267 54 30
info@hepergroup.com

HEPER Europe GmbH

Ahornweg 5a, 58675
Hemer, Germany
+49 237 2901 2975
infoEU@hepergroup.com

We reserve the right to change specifications without prior written notice. Edition: 12.01.2024. For current version visit heperlighting.com. All flux (±%7 tolerance) and power values (±%10 tolerance) are derived following appropriate IES, CIE, and applicable standards.

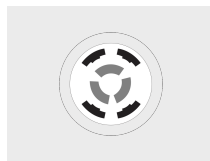
LL2023.864-EN	D-LIGHT AFX 4 Module	[P4] 20x78°, [T1] 111x48°, [T2] 133x48°, [T2-2] 149x54°, [T3] 143x63°, [T4] 117x64°, [T5] 117°,	7565 - 18625 lm	68 - 135 W	3000 K CRI 70, 3000 K CRI 80, 4000 K CRI 70	On/Off, DALI, AutoDIM, StepDIM	9.76 kg
LL2023.865-EN	D-LIGHT AFX 5 Module	[P4] 20x78°, [T1] 111x48°, [T2] 133x48°, [T2-2] 149x54°, [T3] 143x63°, [T4] 117x64°, [T4-2] 117x65°, [T5] 117°,	9080 - 22270 lm	81 - 172 W	3000 K CRI 70, 3000 K CRI 80, 4000 K CRI 70	On/Off, DALI, AutoDIM, StepDIM	8.97 kg

**[T2]**Type II,
Asymmetric,
Side throw**[P4]**Special
pedestrian road
distribution-right
side traffic**[T1]**Type I,
Asymmetric,
Side throw**[T2-2]**Type II,
Asymmetric,
Side throw**[T3]**Type III,
Asymmetric,
Side throw**[T4]**Type IV,
Asymmetric,
Forward throw**[T5]**Type V,
Symmetric**[T4-2]**Type IV,
Asymmetric,
Forward throw

Extras

External surge
protection

Connectivity

**NM7**

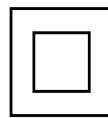
NEMA socket - 7 Pin

Light output

**CLO**

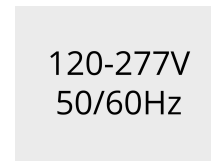
Constant light output

Consult the factory

**C2**

Class II

Consult the factory

**UNI**

120-277V 50/60Hz

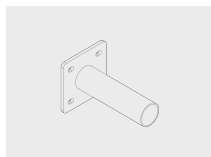
Luminaire body options

**DPC**

Double powder

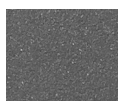
Accessories (To be ordered separately)

Mounting accessories

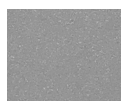


Wall mounting bracket

B6A.03.03.01001.0220



[HM3]
Anthracite
grey



[HM4]
Light grey



[CC]
Custom
colour
(Please
specify RAL
code)