

SPARK ST

Flexible, Elegant and Multi-functional
Bollard Family

CE UK CA IK07 IP66

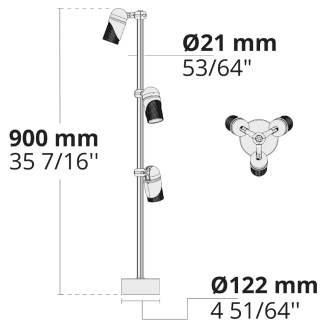


SPARK is a product family that came into play for application in façade and landscape lighting. SPARK is a highly flexible and versatile product usable in different fields thanks to its rich accessories.

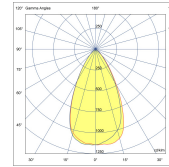
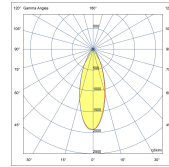
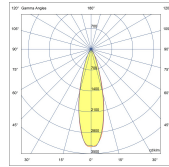
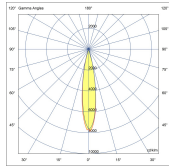
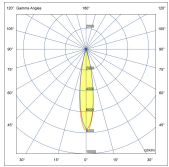
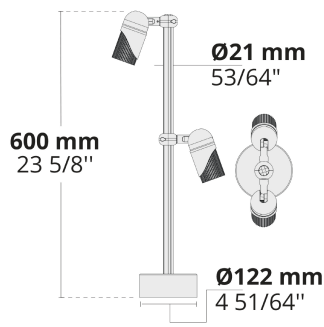
- Equipped with high efficacy COB LED with long time reliability
- 4 different light distribution options from very narrow to wide
- Anodized aluminum body with knurled surface improves the thermal management
- Easy locking system for fine tuning and aiming
- 0°/+355° rotatable, 0°/+90° tiltable mechanism allows precise positioning of the light beam

Product code	Product name	Light distribution	Delivered lumens flux	Rated input power	Colour temperature	Control	Weight
LB8043.529-EN	SPARK ST Trio	[-2], [VN] 18°, [N] 24°, [MN] 36°, [M] 60°	2136 - 2445 lm	33 W	2700 K CRI 90, 3000 K CRI 80		2.5 kg
LB8044.529-EN	SPARK ST Duo	[-2], [VN] 18°, [N] 24°, [MN] 36°, [M] 60°	1425 - 1630 lm	22 W	2700 K CRI 90, 3000 K CRI 80		1.8 kg
LB8049.529-EN	SPARK ST	[-2], [VN] 18°, [N] 24°, [MN] 36°, [M] 60°	712 - 815 lm	10 W	2700 K CRI 90, 3000 K CRI 80	On/Off, DALI	1.1 kg

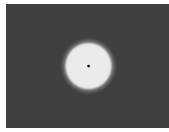
LB8043.529



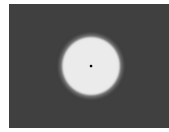
LB8044.529



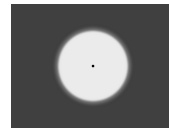
[-2]



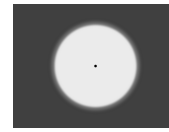
[VN]
Very narrow



[N]
Narrow



[MN]
Medium narrow



[M]
Medium

Extras

Light output



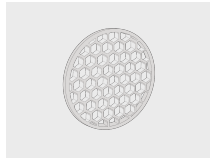
BCF
Blue Colour Filter

Light output



GCF
Green Colour Filter

Light output



HNY
Honeycomb

Light output



OCF
Orange Colour Filter

Light output



RCF
Red Colour Filter

Light output



YCF
Yellow Colour Filter

Luminaire body options



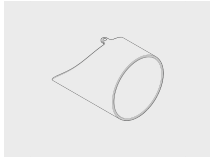
DPC
Double powder coating

Accessories (To be ordered separately)

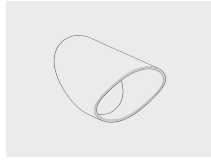
Optical accessories

Optical accessories

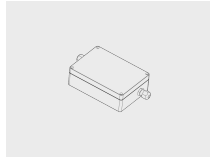
Mounting accessories



Visor for SPARK
101652204

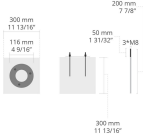


Snoot for SPARK
101652202



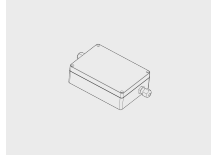
DALI & On/Off driver within an IP67 box for SPARK Trio
007502123

Anchorage



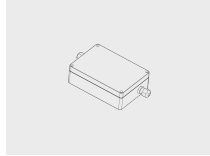
6281004
6281004

Mounting accessories



DALI & On/Off driver within an IP67 box for SPARK Duo
007502122

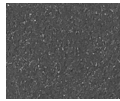
Mounting accessories



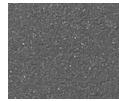
DALI & On/Off driver within an IP67 box for SPARK
007502121



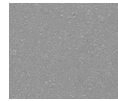
[HM1]
Black



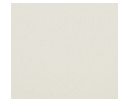
[HM2]
Dark grey



[HM3]
Anthracite grey



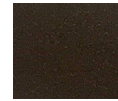
[HM4]
Light grey



[HM5]
White



[CC]
Custom colour
(Please specify RAL code)



[HM6]
Bronze