



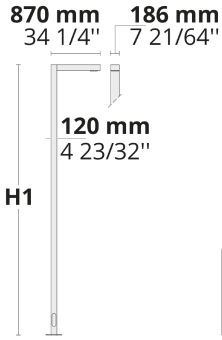
Strong characteristics, flexible optics, and modular structure make DOMINO stand out for contemporary architectural projects.

- Equipped with HEPER's patented Milestone EVO (ML EVO) or AreaFlex (AFX) module
- Superior glare management with hidden light source
- Indirect lighting with reflector technology
- Flexible light distribution options from Type I through Type V (AFX)
- Uniform lighting distribution through multifaceted reflectors (ML)
- Double layout configuration for further flexibility
- Superior thermal management with upward aligned LED chips
- Easy installation and maintenance with modular structure

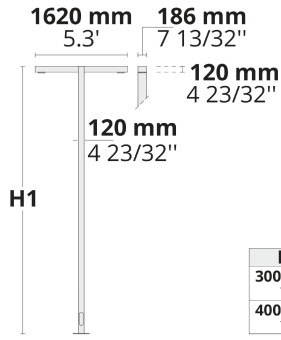
Product code	Product name	Light distribution	Delivered lumens flux	Rated input power	Colour temperature	Control	Weight
LP4034.681-EN	DOMINO ML EVO 1 Module	[T2] 130x85°	2909 - 3678 lm	35 W	2700 K CRI 80, 3000 K CRI 80, 4000 K CRI 70, 4000 K CRI 80	On/Off, DALI, AutoDIM, StepDIM	42.51 kg (4 m), 47.61 kg (5 m), 52.71 kg (6 m)
LP4034.682-EN	DOMINO ML EVO 2 Module	[T2] 130x85°	5819 - 7357 lm	70 W	2700 K CRI 80, 3000 K CRI 80, 4000 K CRI 70, 4000 K CRI 80	On/Off, DALI, AutoDIM, StepDIM	44.31 kg (4 m), 49.41 kg (5 m), 54.51 kg (6 m)
LP4034.683-EN	DOMINO ML EVO 3 Module	[T2] 130x85°	8733 - 11036 lm	104 W	2700 K CRI 80, 3000 K CRI 80, 4000 K CRI 70, 4000 K CRI 80	On/Off, DALI, AutoDIM, StepDIM	70.8 kg (4 m), 75.9 kg (5 m), 81 kg (6 m)
LP4034.861-EN	DOMINO AFX 1 Module	[P4] 20x78°, [T1] 111x48°, [T2] 133x48°, [T2-2] 149x54°, [T3] 143x63°, [T4] 117x64°, [T5] 117°	1975 - 4540 lm	18 - 35 W	2700 K CRI 80, 3000 K CRI 80, 4000 K CRI 70, 4000 K CRI 80	On/Off, DALI, AutoDIM, StepDIM	42.31 kg (4 m), 47.41 kg (5 m), 52.51 kg (6 m)
LP4034.862-EN	DOMINO AFX 2 Module	[P4] 20x78°, [T1] 111x48°, [T2] 133x48°, [T2-2] 149x54°, [T3] 143x63°, [T4] 117x64°, [T5] 117°	3785 - 9085 lm	34 - 67 W	2700 K CRI 80, 3000 K CRI 80, 4000 K CRI 70, 4000 K CRI 80	On/Off, DALI, AutoDIM, StepDIM	44.11 kg (4 m), 49.21 kg (5 m), 54.31 kg (6 m)
LP4034.863-EN	DOMINO AFX 3 Module	[P4] 20x78°, [T1] 111x48°, [T2] 133x48°, [T2-2] 149x54°, [T3] 143x63°, [T4] 117x64°, [T5] 117°	5675 - 13800 lm	50 - 100 W	2700 K CRI 80, 3000 K CRI 80, 4000 K CRI 70, 4000 K CRI 80	On/Off, DALI, AutoDIM, StepDIM	70.3 kg (4 m), 75.4 kg (5 m), 80.5 kg (6 m)
LP4091.681-EN	DOMINO ML EVO 1 Module Duo	[T2] 130x85°	5819 - 7357 lm	70 W	2700 K CRI 80, 3000 K CRI 80, 4000 K CRI 70, 4000 K CRI 80	On/Off, DALI, AutoDIM, StepDIM	50.35 kg (4 m), 55.45 kg (5 m), 60.55 kg (6 m)
LP4091.682-EN	DOMINO ML EVO 2 Module Duo	[T2] 130x85°	11643 - 14714 lm	136 W	2700 K CRI 80, 3000 K CRI 80, 4000 K CRI 70, 4000 K CRI 80	On/Off, DALI, AutoDIM, StepDIM	53.95 kg (4 m), 59.05 kg (5 m), 59.15 kg (6 m)

LP4091.683-EN	DOMINO ML EVO 3 Module Duo	[T2] 130x85°,	17466 - 22070 lm	202 W	2700 K CRI 80, 3000 K CRI 80, 4000 K CRI 70, 4000 K CRI 80	On/Off, DALI, AutoDIM, StepDIM	82.99 kg (4 m), 88.09 kg (5 m), 93.19 kg (6 m)
LP4091.861-EN	DOMINO AFX 1 Module Duo	[P4] 20x78°, [T1] 111x48°, [T2] 133x48°, [T3] 143x63°, [T4] 117x64°, [T5] 117°,	3785 - 9085 lm	36 - 70 W	2700 K CRI 80, 3000 K CRI 80, 4000 K CRI 70, 4000 K CRI 80	On/Off, DALI, AutoDIM, StepDIM	50.35 kg (4 m), 110.77 kg (5 m), 115.87 kg (6 m)
LP4091.862-EN	DOMINO AFX 2 Module Duo	[P4] 20x78°, [T1] 111x48°, [T2] 133x48°, [T3] 143x63°, [T4] 117x64°, [T5] 117°,	7565 - 18625 lm	68 - 135 W	2700 K CRI 80, 3000 K CRI 80, 4000 K CRI 70, 4000 K CRI 80	On/Off, DALI, AutoDIM, StepDIM	53.95 kg (4 m), 59.05 kg (5 m), 64.15 kg (6 m)
LP4091.863-EN	DOMINO AFX 3 Module Duo	[P4] 20x78°, [T1] 111x48°, [T2] 133x48°, [T3] 143x63°, [T4] 117x64°, [T5] 117°,	12280 - 27420 lm	101 - 200 W	2700 K CRI 80, 3000 K CRI 80, 4000 K CRI 70, 4000 K CRI 80	On/Off, DALI, AutoDIM, StepDIM	82.99 kg (4 m), 88.09 kg (5 m), 93.19 kg (6 m)

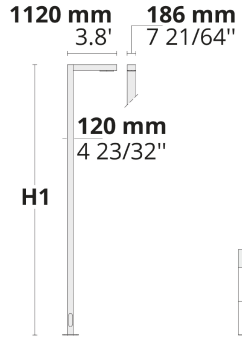
LP4034.681 / LP4034.861



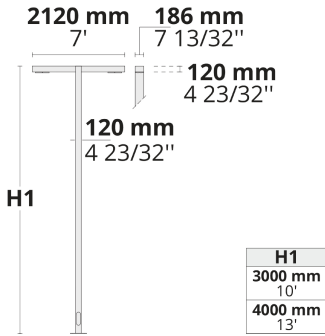
LP4091.681 / LP4091.861



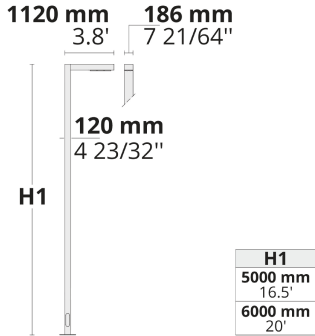
LP4034.682 / LP4034.862



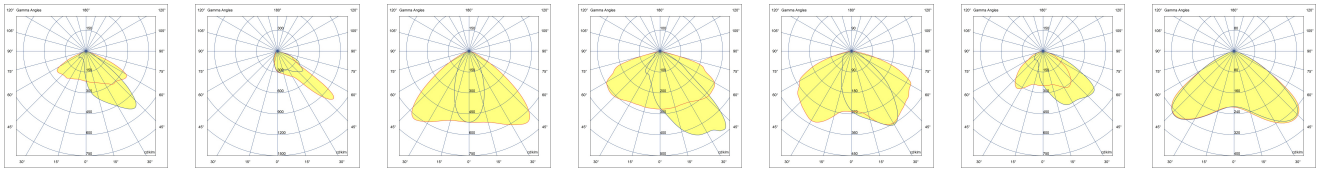
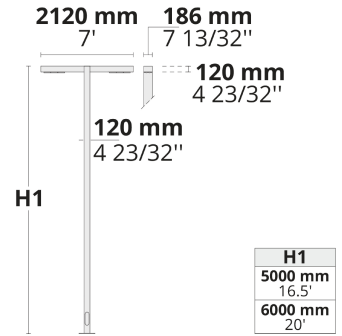
LP4091.682 / LP4091.862



LP4034.683 / LP4034.863



LP4091.683 / LP4091.863



- [T2]**  
Type II,  
Asymmetric,  
Side throw
- [P4]**  
Special  
pedestrian road  
distribution-right  
side traffic
- [T1]**  
Type I,  
Asymmetric,  
Side throw
- [T2-2]**  
Type II,  
Asymmetric,  
Side throw
- [T3]**  
Type III,  
Asymmetric,  
Side throw
- [T4]**  
Type IV,  
Asymmetric,  
Forward throw
- [T5]**  
Type V,  
Symmetric

## Extras

Light output



**CLO**  
Constant light output

Consult the factory



**UNI**  
120-277V 50/60Hz

Luminaire body options

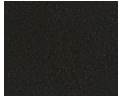


**DPC**  
Double powder  
coating

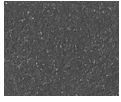
HPR Pazarlama A.Ş.  
Başkent OSB 22. Cd. No: 2, Malıköy, Temelli,  
Sincan, 06909 Ankara, Turkey  
+90 312 267 54 30  
info@hepergroup.com

HEPER Europe GmbH  
Ahornweg 5a, 58675  
Hemer, Germany  
+49 237 2901 2975  
infoEU@hepergroup.com

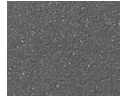
We reserve the right to change specifications without prior written notice. Edition: 12.01.2024. For current version visit heperlighting.com. All flux (±%7 tolerance) and power values (±%10 tolerance) are derived following appropriate IES, CIE, and applicable standards.



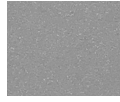
**[HM1]**  
Black



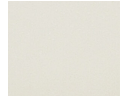
**[HM2]**  
Dark grey



**[HM3]**  
Anthracite  
grey



**[HM4]**  
Light grey



**[HM5]**  
White



**[HM6]**  
Bronze



**[CC]**  
Custom  
colour  
(Please  
specify RAL  
code)