



PHOS
ENGINEERING LIGHT

OCCULAR SQUARE FLUSH TRACK PENDANT
STANDARD

OCCULAR SQUARE FLUSH TRACK PENDANT - STANDARD

Beautifully designed, the driver-housing fits within the channel of standard 3-circuit lighting track, providing a stunning minimalistic approach to track-mounted spotlights.

PRODUCT FEATURES

Spotlight

Adjustable

Interior

LED

IP65

Available in all Phos finishes

Interchangeable optics (pre & post install)

PHOS STANDARDS

60min fire-certified

Acoustic-rated

UK designed, manufactured and assembled

5 year warranty

OPTICS

Standard beam angles:
10° / 20° / 30° / 50°

Ellipsoidal accessories using:

10° optic: 14.8° x 53.2°

20° optic: 24.1° x 58.8°

30° optic: 37.5° x 66.3°

50° optic: 45.8° x 72.6°

PHYSICAL PROPERTIES

Diameter 40mm

Height 200-2000mm

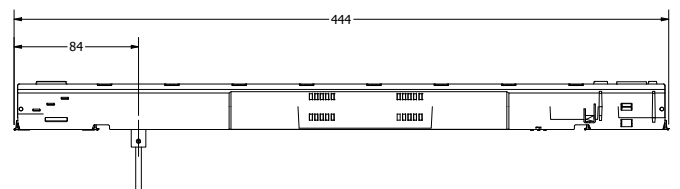
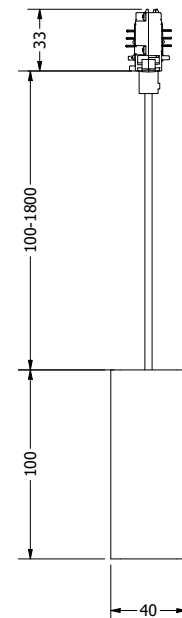
Driver Length 444mm

Standard Operating Ambient Temperature -10°C to 40°C

PRODUCT VIEW



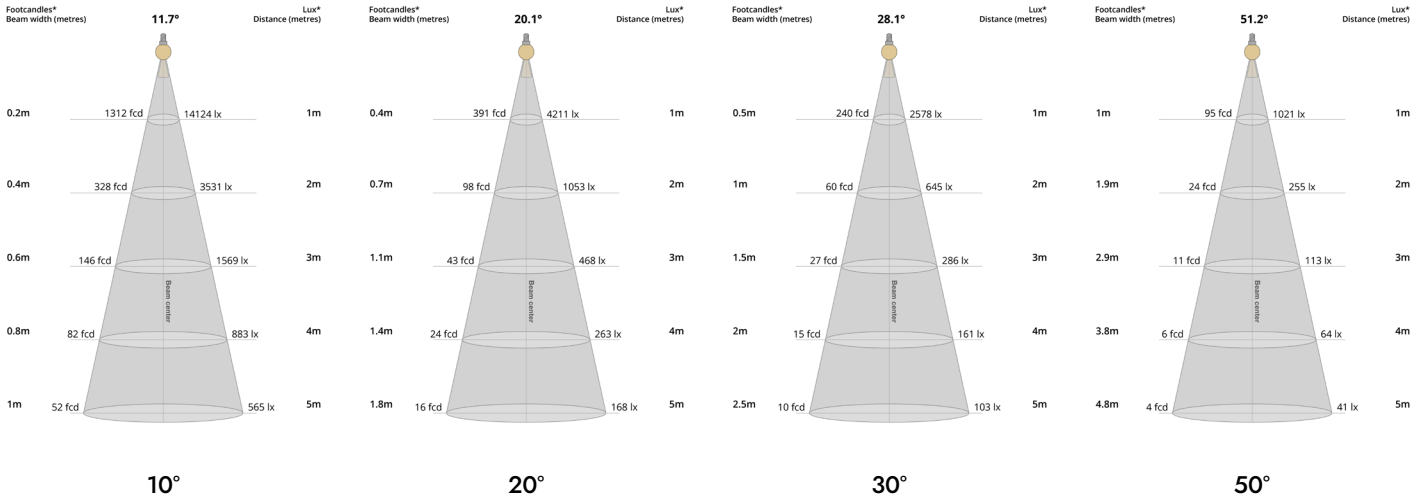
DIMENSIONS



TECHNICAL SPECIFICATIONS

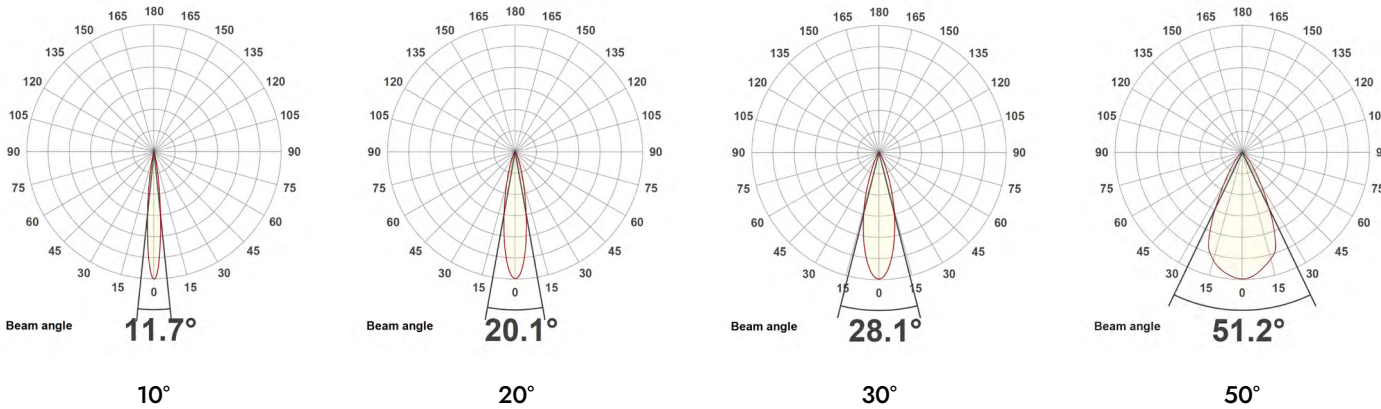
CCT	2700K											
Wattage	4W				9W				14W			
Beam Angles	10°	20°	30°	50°	10°	20°	30°	50°	10°	20°	30°	50°
Luminaire Lumens (lm)	338	307	301	315	593	513	504	518	756	654	646	665
Circuit Watts (c/W)	5.9	6	5.9	6	10.5	10.5	10.6	10.6	15.6	15.6	15.6	15.6
Luminaire Efficacy (l/cW)	57	51	51	53	56	49	48	49	48	42	41	43
Luminance (Cd)	6435	1665	1008	402	11015	2790	1627	672	14339	3595	2065	857
Light Source Lm/W	83				83				83			
Engine Lm/W	64				59				51			
Forward Voltage (Vf)	11.78				12.36				12.85			
Current (mA)	350				700				1050			
CCT	3000K											
Wattage	4W				9W				14W			
Beam Angles	10°	20°	30°	50°	10°	20°	30°	50°	10°	20°	30°	50°
Luminaire Lumens (lm)	393	341	331	345	681	583	580	591	881	769	752	789
Circuit Watts (c/W)	5.9	5.9	5.9	5.9	10.6	10.5	10.5	10.5	15.8	15.8	15.8	15.8
Luminaire Efficacy (l/cW)	67	58	56	58	64	55	55	56	56	49	47	50
Luminance (Cd)	6150	1709	1072	444	10607	2932	1722	771	13743	3861	2298	1022
Light Source Lm/W	83				83				83			
Engine Lm/W	75				71				60			
Forward Voltage (Vf)	11.78				12.36				12.85			
Current (mA)	350				700				1050			
Binning	2 step MacAdams											
CRI	90+											
TM-30-15	Rg 102 Rf 90											
Lumen Maintenance	LM80											
Lifetime	50,000 hours											
Dimming Options	DALI / Push Dim / Mains Dim											
Flicker Index	0											
SVM: (Visual Flicker)	0.02											

LIGHT CONES



*Light cones based on 3000K at 14W

POLAR CURVES



*Polar curves based on 3000K at 14W

PARTCODE BUILDER

Example Code: **OC-S-FTRAPEN-W1/WT/WT-STD14-30-90-20-1050**

Family	Variant	Driver Finish	Body Finish	Inner Baffle Finish	Engine	Power	CCT	CRI	Beam Angle	Driver Current
OC-S Occular Square	FTRAPEN Flush Track Pendant	W1 Pure White	WT White Textured	WT White Textured	STD Standard	4 Watts	27 2700K	90	10	350
		B2 Jet Black	B1 Anodised Black	B1 Anodised Black		9 Watts	30 3000K		20	700
		*C Custom	*C Custom	*C Custom		14 Watts	40 4000K		30	1050
									50	

*Codes for custom finishes can be found on the page 7.

ACCESSORIES



Commissioning Tool
ACCS-TOOL-M-BAFFLE



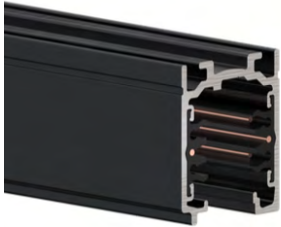
Snoot
ACCS-SNOOT



Baffle
FIXED: CZ7BZFB-XX
ADJUSTABLE: CZ7BZEI-XX
TRIMLESS: CZ7BZTFB-XX



Standard Lens
ACCS-STDLENS10
ACCS-STDLENS20
ACCS-STDLENS30
ACCS-STDLENS50



Standard Track
TRA-STD-MV-STD



Recessed Track
TRA-STD-MV-REC



Timless Track
TRA-STD-MV-TLESS

INSERTS (multiple inserts per fitting)



Softening Insert Recessed
ACCS-RECESSED-SOFT



Softening Insert Flush
ACCS-FLUSH-SOFT



Asymmetric Insert Recessed
ACCS-RECESSED-ASYM



Asymmetric Insert Flush
ACCS-FLUSH-ASYM



Elliptical Insert Recessed
ACCS-RECESSED-10X60ELLIPTICAL



Elliptical Insert Flush
ACCS-FLUSH-10X60ELLIPTICAL



Honeycomb Recessed
ACCS-RECESSED-HCOMB



Honeycomb Flush
ACCS-FLUSH-HCOMB



Colour Change Insert Recessed
ACCS-RECESSED-FILTER18K
ACCS-RECESSED-FILTER22K
ACCS-RECESSED-FILTER24K
ACCS-RECESSED-FILTER25K



Colour Change Insert Flush
ACCS-FLUSH-FILTER18K
ACCS-FLUSH-FILTER22K
ACCS-FLUSH-FILTER24K
ACCS-FLUSH-FILTER25K

FINISHES

Every element of your light can be finished in any of the options below:

PLATED (Interior ONLY)



Antique Bronze
01



Antique Brass
02



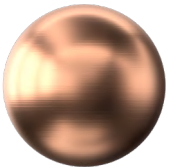
Polished Chrome
03



Satin Nickel
04



Polished Copper
05

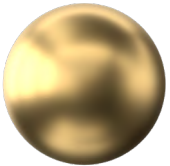


Satin Copper
06



Polished Brass
09

ANODISED (Interior ONLY, except Orba Exteriors)



Tuba Brass
11



Antique Gold
12



Espresso Bronze
13



Cocoa Bronze
14



Ice Gold
15



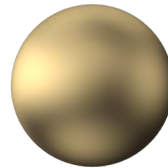
Mocha Bronze
16



Taupe Bronze
17



24K Gold
18



Champagne Gold
19



Anodised Black (9005)
B1

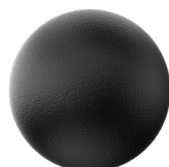
POWDER COAT (Interior & Exterior)



Pure White (9010)
W1



Textured White (9010)
WT



Textured Black (9005)
BT



RAL Classic
www.phos.co.uk/finishes



RAL Design
price on application