



PHOS
ENGINEERING LIGHT

OCCULAR ROUND FLUSH TRACK PENDANT
STANDARD

OCCULAR ROUND FLUSH TRACK PENDANT - STANDARD

Beautifully designed, the driver-housing fits within the channel of standard 3-circuit lighting track, providing a stunning minimalistic approach to track-mounted spotlights.

PRODUCT FEATURES

Spotlight

Adjustable

Interior

LED

IP20

Available in all Phos finishes

Interchangeable optics (pre & post install)

PHOS STANDARDS

60min fire-certified

Acoustic-rated

UK designed, manufactured and assembled

5 year warranty

Compatible with Standard / Recessed & Trimless Track

OPTICS

Standard beam angles:
10° / 20° / 30° / 50°

Ellipsoidal accessories using:

10° optic: 14.8° x 53.2°

20° optic: 24.1° x 58.8°

30° optic: 37.5° x 66.3°

50° optic: 45.8° x 72.6°

PHYSICAL PROPERTIES

Diameter Ø40mm

Height 200-2000mm

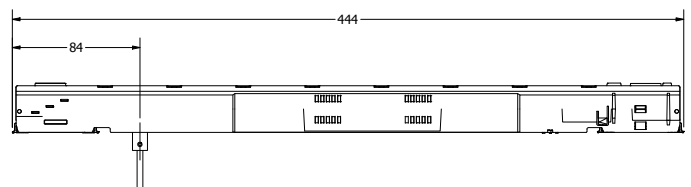
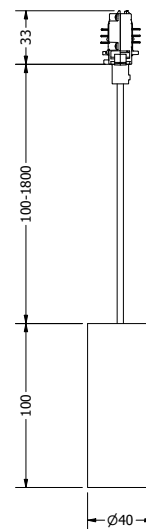
Driver Length 444mm

Standard Operating Ambient Temperature -10°C to 40°C

PRODUCT VIEW



DIMENSIONS



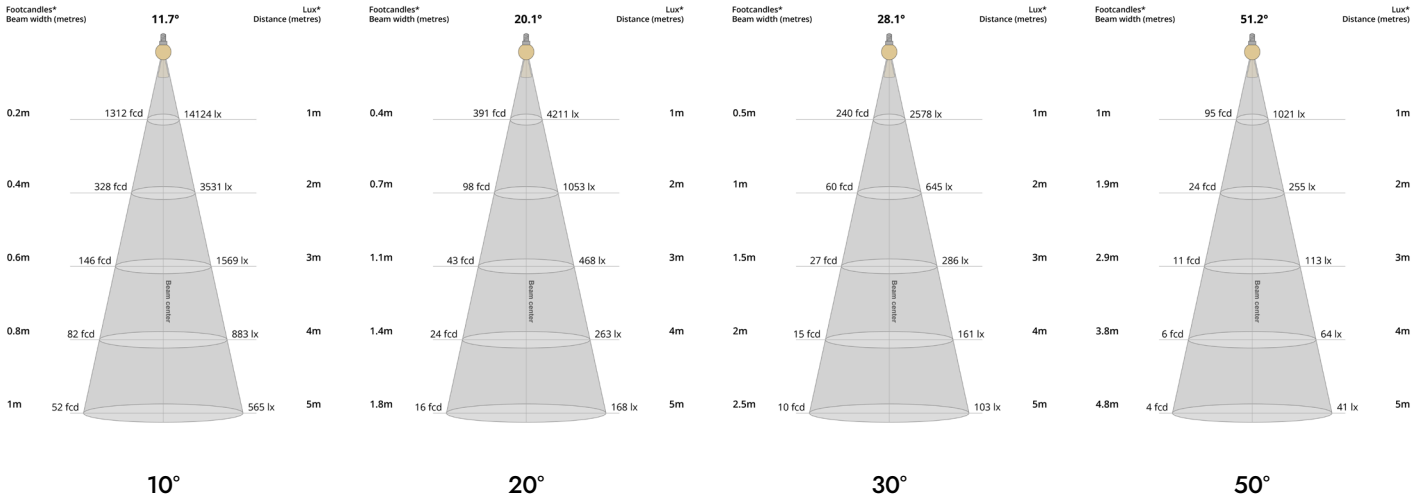
TECHNICAL SPECIFICATIONS

| CCT | 2700K | | | | | | | | | | | |
|---------------------------|-------|------|-----|-----|-------|------|------|------|-------|------|------|------|
| | 4W | | | | 9W | | | | 14W | | | |
| Wattage | 10° | 20° | 30° | 50° | 10° | 20° | 30° | 50° | 10° | 20° | 30° | 50° |
| Beam Angles | 10° | 20° | 30° | 50° | 10° | 20° | 30° | 50° | 10° | 20° | 30° | 50° |
| Luminaire Lumens (lm) | 343 | 301 | 295 | 308 | 585 | 499 | 497 | 510 | 747 | 637 | 631 | 658 |
| Circuit Watts (c/W) | 6 | 6 | 6 | 6 | 10.6 | 10.5 | 10.6 | 10.5 | 15.6 | 15.5 | 15.5 | 15.5 |
| Luminaire Efficacy (l/cW) | 57 | 51 | 49 | 52 | 55 | 47 | 47 | 49 | 48 | 41 | 41 | 42 |
| Luminance (Cd) | 6258 | 1507 | 862 | 385 | 10645 | 2546 | 1433 | 672 | 14809 | 3571 | 2147 | 863 |
| Light Source Lm/W | 83 | | | | 83 | | | | 83 | | | |
| Engine Lm/W | 64 | | | | 59 | | | | 51 | | | |
| Forward Voltage (Vf) | 11.78 | | | | 12.36 | | | | 12.85 | | | |
| Current (mA) | 350 | | | | 700 | | | | 1050 | | | |

| CCT | 3000K | | | | | | | | | | | |
|---------------------------|-------|------|------|-----|-------|------|------|------|-------|------|------|------|
| | 4W | | | | 9W | | | | 14W | | | |
| Wattage | 10° | 20° | 30° | 50° | 10° | 20° | 30° | 50° | 10° | 20° | 30° | 50° |
| Beam Angles | 10° | 20° | 30° | 50° | 10° | 20° | 30° | 50° | 10° | 20° | 30° | 50° |
| Luminaire Lumens (lm) | 392 | 341 | 331 | 347 | 659 | 582 | 571 | 584 | 870 | 761 | 750 | 772 |
| Circuit Watts (c/W) | 5.9 | 5.9 | 5.8 | 6 | 10.6 | 10.6 | 10.5 | 10.5 | 15.9 | 15.8 | 15.6 | 15.7 |
| Luminaire Efficacy (l/cW) | 67 | 58 | 57 | 58 | 62 | 55 | 54 | 56 | 55 | 48 | 48 | 49 |
| Luminance (Cd) | 6048 | 1854 | 1172 | 455 | 10624 | 3176 | 1963 | 773 | 14137 | 4215 | 2582 | 1023 |
| Light Source Lm/W | 83 | | | | 83 | | | | 83 | | | |
| Engine Lm/W | 75 | | | | 71 | | | | 60 | | | |
| Forward Voltage (Vf) | 11.78 | | | | 12.36 | | | | 12.85 | | | |
| Current (mA) | 350 | | | | 700 | | | | 1050 | | | |

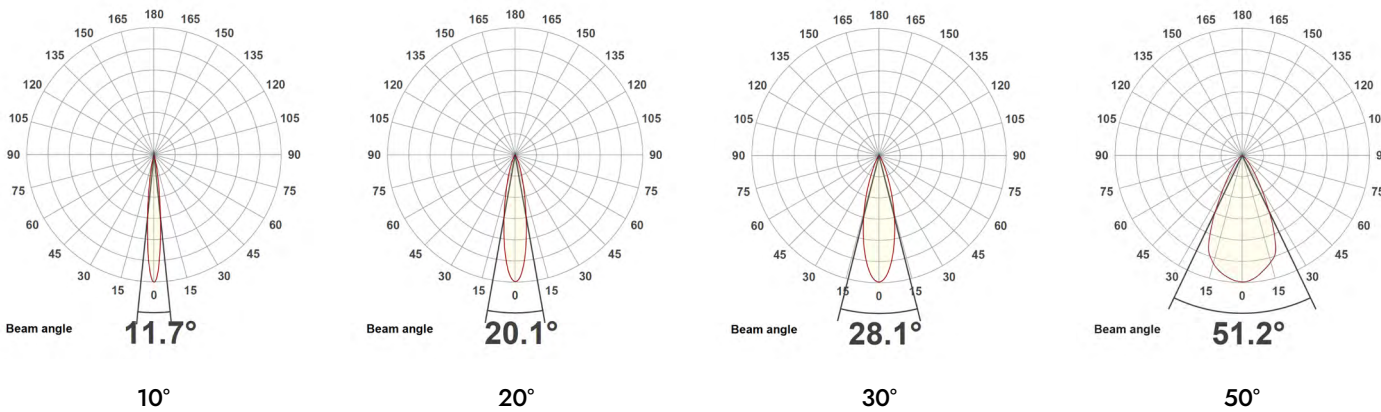
| | | | | | | | | | | | | |
|-----------------------|-----------------------------|--|--|--|--|--|--|--|--|--|--|--|
| Binning | 2 step MacAdams | | | | | | | | | | | |
| CRI | 90+ | | | | | | | | | | | |
| TM-30-15 | Rg 102 Rf 90 | | | | | | | | | | | |
| Lumen Maintenance | LM80 | | | | | | | | | | | |
| Lifetime | 50,000 hours | | | | | | | | | | | |
| Dimming Options | DALI / Push Dim / Mains Dim | | | | | | | | | | | |
| Flicker Index | 0 | | | | | | | | | | | |
| SVM: (Visual Flicker) | 0.02 | | | | | | | | | | | |

LIGHT CONES



*Light cones based on 3000K at 14W

POLAR CURVES



*Polar curves based on 3000K at 14W

PARTCODE BUILDER

Example Code: **OC-R-FTRAPEN-W1/WT/WT/WT-STD14-30-90-20-1050**

| Family | Variant | Driver Finish | Arm Finish | Body Finish | Inner Baffle Finish | Engine | Power | CCT | CRI | Beam Angle | Driver Current |
|------------------------|--------------------------------|------------------|----------------------|----------------------|----------------------|-----------------|-------------|-------------|-----|------------|----------------|
| OC-R Occlular Round | FTRAPEN Flush Track Pendant | W1 Pure White | WT White Textured | WT White Textured | WT White Textured | STD Standard | 4 Watts | 27 2700K | 90 | 10 | 350 |
| | | B2 Jet Black | B1 Anodised Black | B1 Anodised Black | B1 Anodised Black | | 9 Watts | 30 3000K | | 20 | 700 |
| | | *C Custom | *C Custom | *C Custom | *C Custom | | 14 Watts | 40 4000K | | 30 | 1050 |
| | | | | | | | | | | 50 | |

*Codes for custom finishes can be found on the page 7.

ACCESSORIES



Commissioning Tool
ACCS-TOOL-M-BAFFLE



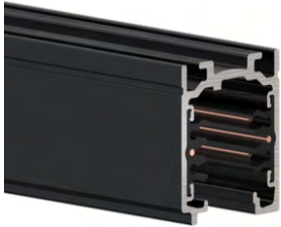
Snoot
ACCS-SNOOT



Baffle
FIXED: CZ7BZFB-XX
ADJUSTABLE: CZ7BZEI-XX
TRIMLESS: CZ7BZTFB-XX



Standard Lens
ACCS-STDLENS10
ACCS-STDLENS20
ACCS-STDLENS30
ACCS-STDLENS50



Standard Track
TRA-STD-MV-STD



Recessed Track
TRA-STD-MV-REC



Timless Track
TRA-STD-MV-TLESS

INSERTS (multiple inserts per fitting)



Softening Insert Recessed
ACCS-RECESSED-SOFT



Softening Insert Flush
ACCS-FLUSH-SOFT



Asymmetric Insert Recessed
ACCS-RECESSED-ASYM



Asymmetric Insert Flush
ACCS-FLUSH-ASYM



Elliptical Insert Recessed
ACCS-RECESSED-10X60ELLIPTICAL



Elliptical Insert Flush
ACCS-FLUSH-10X60ELLIPTICAL



Honeycomb Recessed
ACCS-RECESSED-HCOMB



Honeycomb Flush
ACCS-FLUSH-HCOMB



Colour Change Insert Recessed
ACCS-RECESSED-FILTER18K
ACCS-RECESSED-FILTER22K
ACCS-RECESSED-FILTER24K
ACCS-RECESSED-FILTER25K



Colour Change Insert Flush
ACCS-FLUSH-FILTER18K
ACCS-FLUSH-FILTER22K
ACCS-FLUSH-FILTER24K
ACCS-FLUSH-FILTER25K

FINISHES

Every element of your light can be finished in any of the options below:

PLATED (Interior ONLY)



Antique Bronze
01



Antique Brass
02



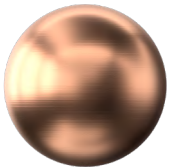
Polished Chrome
03



Satin Nickel
04



Polished Copper
05



Satin Copper
06

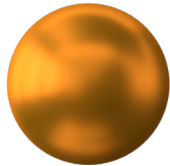


Polished Brass
09

ANODISED (Interior ONLY, except Orba Exteriors)



Tuba Brass
11



Antique Gold
12



Espresso Bronze
13



Cocoa Bronze
14



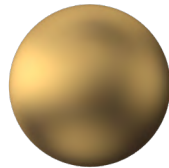
Ice Gold
15



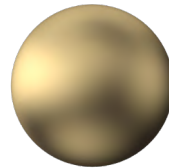
Mocha Bronze
16



Taupe Bronze
17



24K Gold
18



Champagne Gold
19



Anodised Black (9005)
B1

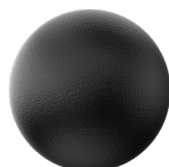
POWDER COAT (Interior & Exterior)



Pure White (9010)
W1



Textured White (9010)
WT



Textured Black (9005)
BT



RAL Classic
www.phos.co.uk/finishes



RAL Design
price on application