

ALPHABET

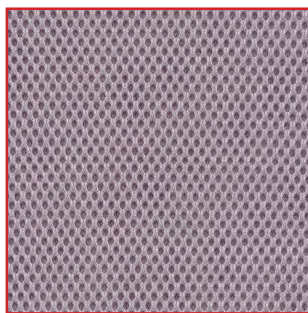
TECHNICAL CHARACTERISTICS

Composition	100% Polyolefin
Weight	220g/m ² + 5% (375g/lin.m. +-5%)
Width	170cm + 2% Usable
Abrasion Resistance	Grade A tested in accordance with EN 14465:2003 with a 5 year guarantee of wearability (full details available)
Flammability	BS 476 Part 7 Class 1, BS EN 1021 - 1:2006 (cigarette) Note: Flammability performance is dependent on components used.
Maintenance	Vacuum regularly. Wipe clean with a damp cloth or shampoo using proprietary upholstery shampoo.
Colour Matching	Batch to batch variations in shade may occur with commercial tolerances.

COLOR CODES FOR ACOUSTIC PANELS



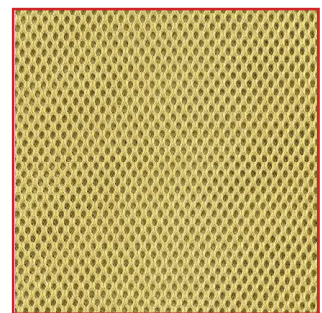
1 - Black



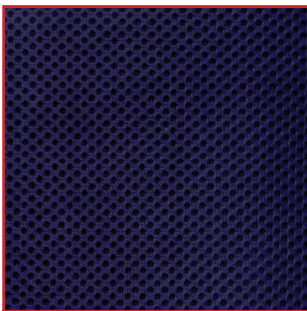
2 -Grey



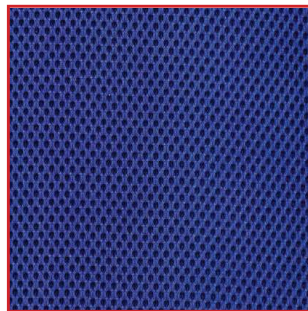
3 -Charcoal Grey



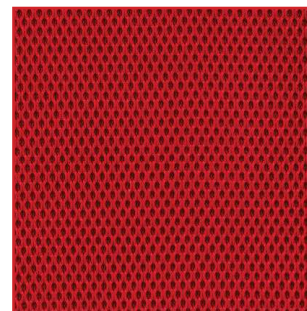
4 -Beige



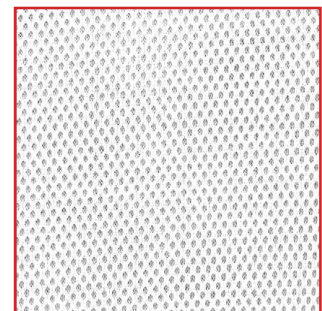
5 -Dark Blue



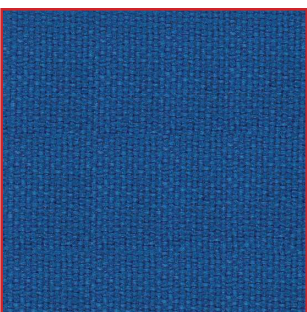
6 -Light Blue



7 - Red



8 -White



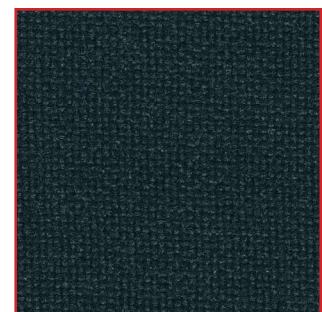
Adriatic EJ154



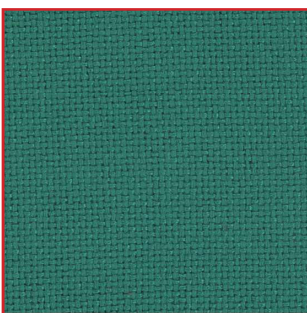
Austen EJ173



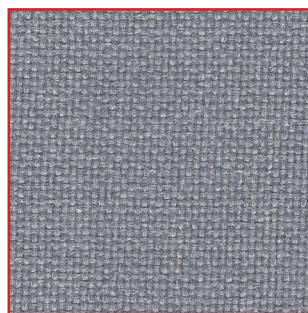
Beltane EJ193



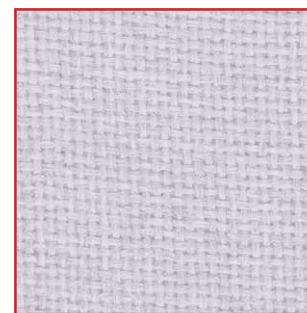
Black EJ138



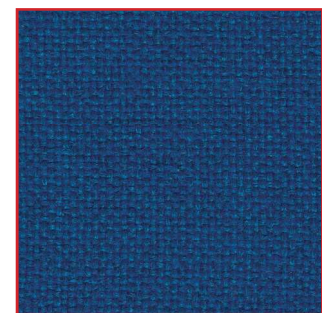
Carron EJ015



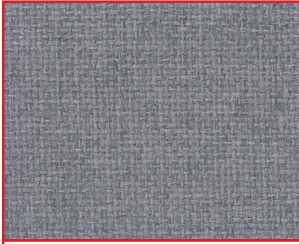
Chaucer EJ172



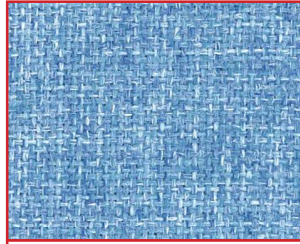
Clan EJ169



Cluanie EJ180



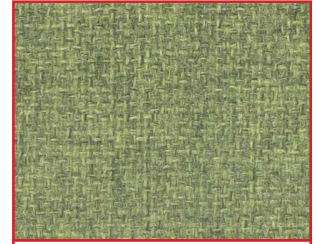
Denny EJ196



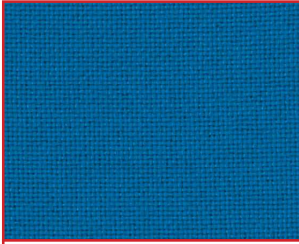
Dolphin EJ105



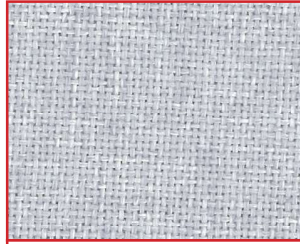
Easdale EJ188



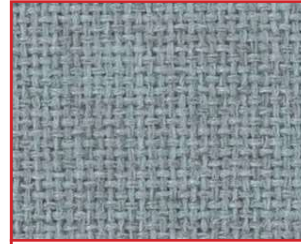
Fair Isle EJ186



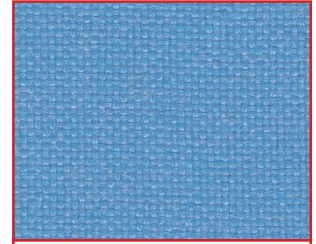
Galilee EJ125



Glass EJ004



Hillswick EJ190



Inverness EJ175



Lead EJ104



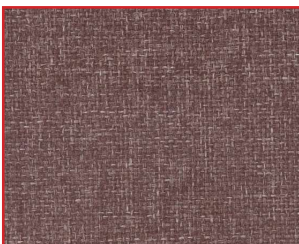
Lerwick EJ194



Lomond EJ192



Lora EJ187



Lossie EJ197



Maree EJ195



Merrick EJ048



Pitlochry EJ076



Portland EJ016



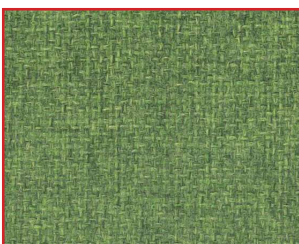
Ronay EJ189



Shetland EJ191



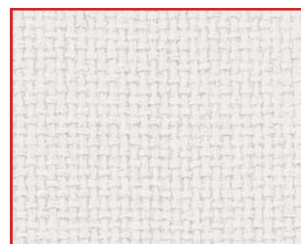
Spray EJ033



Staffa EJ185.jpg



Tummel EJ038



Vit EJ184



Walten EJ011